

MILLTHREAD

Upgraded MILLTHREAD Indexable Inserts Line

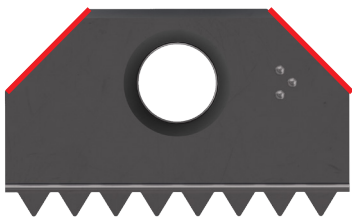


Highlights

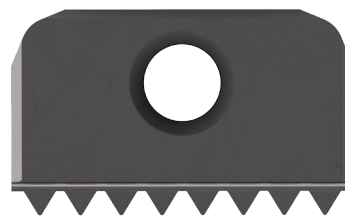
ISCAR is upgrading the MILLTHREAD indexable inserts and tools.

Inserts

The new inserts can be identified by their two rear chamfers and their designations differ from those of the older ones.



New designation
MT LNHU 1403 I1.50ISO IC908

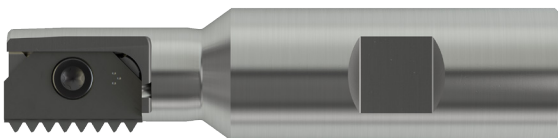


Old designation
MT14 I 1.50 ISO IC908

Tool Modifications and Features

- Tool bodies were re-designed for higher rigidity
- Shiny hard touch coated, providing more resistance to corrosion and abrasion for better chip flow
- Insert pocket looks different than the previous ones

New Tool



New designation
MTE D18-1-W20-21

Old Tool



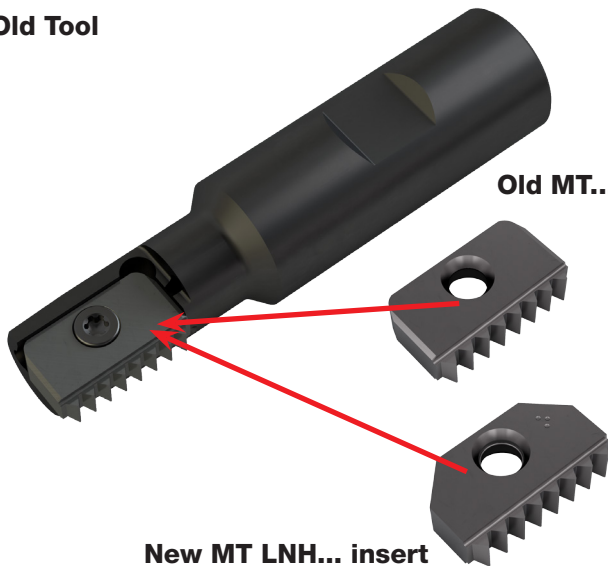
Old designation
MTSR 0018 H21



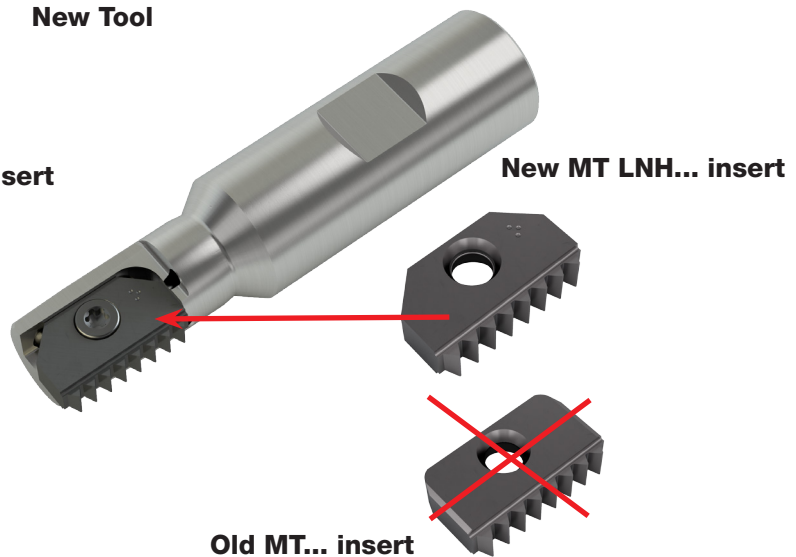
Important note

The old inserts can only be clamped on to the older tools, while the new inserts can be clamped on either the new or old tools.

Old Tool



New Tool



Please inform your customers about these modifications and upgrades.
No changes are required for the new items regarding cutting conditions.

Attached are the catalog pages of the new inserts and tools, and a list of the new item designations and catalog numbers vs. the old ones.

Availability

In the first stage, insert sizes 14 and 21 mm, and their suitable tools will gradually replace the old thread milling items.

12,30,40 insert sizes and their suitable tools will be available by the end of the 2nd quarter of 2017.

The older items will be supplied until their stock is depleted, then the new tools will be supplied.

Sincerely,

Kobi Kisos
Chief Technical Officer,
Rotating Tools
Iscar Headquarters

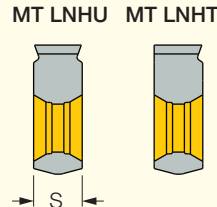
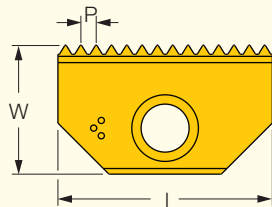
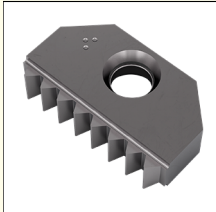
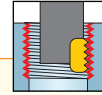
Sincerely,

Eran Pinko
Team Leader
Thread Milling
Iscar Headquarters

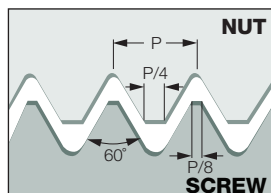


MT LNH#-ISO (Internal)

Thread Milling Inserts for Internal ISO Metric Profile



Designation	Dimensions				IC908
	L	Pitch	W	S	
MT LNHT 1202 I0.50ISO	12.00	0.50	6.50	2.90	•
MT LNHT 1202 I0.75ISO	12.00	0.75	6.50	2.90	•
MT LNHT 1202 I1.00ISO	12.00	1.00	6.50	2.90	•
MT LNHT 1202 I1.25ISO	12.00	1.25	6.50	2.90	•
MT LNHT 1202 I1.50ISO	12.00	1.50	6.50	2.90	•
MT LNHU 1403 I0.50ISO	14.00	0.50	7.90	3.20	•
MT LNHU 1403 I0.75ISO	14.00	0.75	7.90	3.20	•
MT LNHU 1403 I1.00ISO	14.00	1.00	7.90	3.20	•
MT LNHU 1403 I1.25ISO	14.00	1.25	7.90	3.20	•
MT LNHU 1403 I1.50ISO	14.00	1.50	7.90	3.20	•
MT LNHU 1403 I1.75ISO	14.00	1.75	7.90	3.20	•
MT LNHU 1403 I2.00ISO	14.00	2.00	7.90	3.20	•
MT LNHU 1403 I2.50ISO	14.00	2.50	7.90	3.20	•
MT LNHU 2104 I1.00ISO	21.00	1.00	12.60	4.80	•
MT LNHU 2104 I1.50ISO	21.00	1.50	12.60	4.80	•
MT LNHU 2104 I1.75ISO	21.00	1.75	12.60	4.80	•
MT LNHU 2104 I2.00ISO	21.00	2.00	12.60	4.80	•
MT LNHU 2104 I2.50ISO	21.00	2.50	12.60	4.80	•
MT LNHU 2104 I3.00ISO	21.00	3.00	12.60	4.80	•
MT LNHU 2104 I3.50ISO	21.00	3.50	12.60	4.80	•
MT LNHU 3005 I1.50ISO	30.00	1.50	16.70	5.60	•
MT LNHU 3005 I2.00ISO	30.00	2.00	16.70	5.60	•
MT LNHU 3005 I3.00ISO	30.00	3.00	16.70	5.60	•
MT LNHU 3005 I3.50ISO	30.00	3.50	16.70	5.60	•
MT LNHU 3005 I4.00ISO	30.00	4.00	16.70	5.60	•
MT LNHU 3005 I4.50ISO	30.00	4.50	16.70	5.60	•
MT LNHU 3005 I5.00ISO	30.00	5.00	16.70	5.60	•
MT LNHU 4006 I1.50ISO	40.00	1.50	20.80	6.40	•
MT LNHU 4006 I2.00ISO	40.00	2.00	20.80	6.40	•
MT LNHU 4006 I3.00ISO	40.00	3.00	20.80	6.40	•
MT LNHU 4006 I3.50ISO	40.00	3.50	20.80	6.40	•
MT LNHU 4006 I4.00ISO	40.00	4.00	20.80	6.40	•
MT LNHU 4006 I4.50ISO	40.00	4.50	20.80	6.40	•
MT LNHU 4006 I5.00ISO	40.00	5.00	20.80	6.40	•
MT LNHU 4006 I5.50ISO	40.00	5.50	20.80	6.40	•
MT LNHU 4006 I6.00ISO	40.00	6.00	20.80	6.40	•



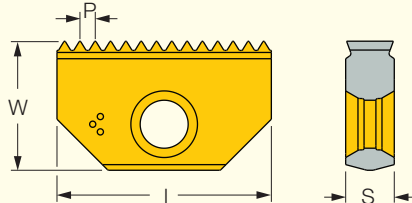
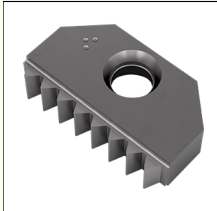
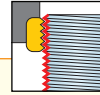


NEW		OLD	
3323073	MT LNHT 1202 I0.50ISO 908	5606955	MT12 I 0.50 ISO IC908
3323071	MT LNHT 1202 I0.75ISO 908	5606956	MT12 I 0.75 ISO IC908
5669448	MT LNHT 1202 I1.00ISO 908	5606957	MT12 I 1.00 ISO IC908
5669453	MT LNHT 1202 I1.25ISO 908	5606958	MT12 I 1.25 ISO IC908
5669449	MT LNHT 1202 I1.50ISO 908	5606959	MT12 I 1.50 ISO IC908
5669471	MT LNHT 1403 I0.50ISO 908	5606987	MT14 I 0.50 ISO IC908
5669468	MT LNHT 1403 I0.75ISO 908	5606988	MT14 I 0.75 ISO IC908
5669327	MT LNHT 1403 I1.00ISO 908	5606989	MT14 I 1.00 ISO IC908
3319983	MT LNHT 1403 I1.25ISO 908	5606990	MT14 I 1.25 ISO IC908
5669321	MT LNHT 1403 I1.50ISO 908	5606991	MT14 I 1.50 ISO IC908
3319986	MT LNHT 1403 I1.75ISO 908	5606992	MT14 I 1.75 ISO IC908
5669332	MT LNHT 1403 I2.00ISO 908	5606997	MT14 I 2.00 ISO IC908
5669457	MT LNHT 1403 I2.50ISO 908	5606998	MT14 I 2.50 ISO IC908
5669329	MT LNHT 2104 I1.00ISO 908	5607032	MT21 I 1.00 ISO IC908
5669323	MT LNHT 2104 I1.50ISO 908	5607033	MT21 I 1.50 ISO IC908
3320075	MT LNHT 2104 I1.75ISO 908	5607034	MT21 I 1.75 ISO IC908
5669334	MT LNHT 2104 I2.00ISO 908	5607040	MT21 I 2.00 ISO IC908
5669483	MT LNHT 2104 I2.50ISO 908	5607041	MT21 I 2.50 ISO IC908
5669475	MT LNHT 2104 I3.00ISO 908	5607044	MT21 I 3.00 ISO IC908
5669477	MT LNHT 2104 I3.50ISO 908	5607045	MT21 I 3.50 ISO IC908
5669326	MT LNHT 3005 I1.50ISO 908	5607078	MT30 I 1.50 ISO IC908
5669336	MT LNHT 3005 I2.00ISO 908	5607084	MT30 I 2.00 ISO IC908
5669488	MT LNHT 3005 I3.00ISO 908	5607086	MT30 I 3.00 ISO IC908
3323362	MT LNHT 3005 I3.50ISO 908	5607087	MT30 I 3.50 ISO IC908
5669486	MT LNHT 3005 I4.00ISO 908	5607088	MT30 I 4.00 ISO IC908
5669489	MT LNHT 3005 I4.50ISO 908	5607089	MT30 I 4.50 ISO IC908
5669490	MT LNHT 3005 I5.00ISO 908	5607091	MT30 I 5.00 ISO IC908
3323517	MT LNHT 4006 I1.50ISO 908	5607119	MT40 I 1.50 ISO IC908
5669500	MT LNHT 4006 I2.00ISO 908	5607124	MT40 I 2.00 ISO IC908
3323518	MT LNHT 4006 I3.00ISO 908	5607125	MT40 I 3.00 ISO IC908
3323519	MT LNHT 4006 I3.50ISO 908	5607126	MT40 I 3.50 ISO IC908
5669499	MT LNHT 4006 I4.00ISO 908	5607127	MT40 I 4.00 ISO IC908
3323520	MT LNHT 4006 I4.50ISO 908	5607129	MT40 I 4.50 ISO IC908
3323522	MT LNHT 4006 I5.00ISO 908	5607131	MT40 I 5.00 ISO IC908
3323524	MT LNHT 4006 I5.50ISO 908	5607132	MT40 I 5.50 ISO IC908
5669497	MT LNHT 4006 I6.00ISO 908	5607134	MT40 I 6.00 ISO IC908

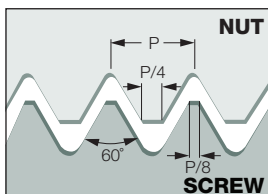


MT LNHU-ISO (External)

Thread Milling Inserts for External ISO Metric Profile



Designation	Dimensions				IC908
	I	Pitch	W	S	
MT LNHU 1403 E0.75ISO	14.00	0.75	7.90	3.20	•
MT LNHU 1403 E1.00ISO	14.00	1.00	7.90	3.20	•
MT LNHU 1403 E1.25ISO	14.00	1.25	7.90	3.20	•
MT LNHU 1403 E1.50ISO	14.00	1.50	7.90	3.20	•
MT LNHU 1403 E1.75ISO	14.00	1.75	7.90	3.20	•
MT LNHU 1403 E2.00ISO	14.00	2.00	7.90	3.20	•
MT LNHU 1403 E2.50ISO	14.00	2.50	7.90	3.20	•
MT LNHU 2104 E1.00ISO	21.00	1.00	12.60	4.80	•
MT LNHU 2104 E1.50ISO	21.00	1.50	12.60	4.80	•
MT LNHU 2104 E2.00ISO	21.00	2.00	12.60	4.80	•
MT LNHU 2104 E2.50ISO	21.00	2.50	12.80	4.80	•
MT LNHU 2104 E3.00ISO	21.00	3.00	12.80	4.80	•
MT LNHU 3005 E1.50ISO	30.00	1.50	16.70	5.60	•
MT LNHU 3005 E2.00ISO	30.00	2.00	16.70	5.60	•
MT LNHU 3005 E3.00ISO	30.00	3.00	16.70	5.60	•
MT LNHU 3005 E3.50ISO	30.00	3.50	16.70	5.60	•
MT LNHU 3005 E4.00ISO	30.00	4.00	16.70	5.60	•
MT LNHU 4006 E1.50ISO	40.00	1.50	20.80	6.40	•
MT LNHU 4006 E2.00ISO	40.00	2.00	20.80	6.40	•
MT LNHU 4006 E3.00ISO	40.00	3.00	20.80	6.40	•
MT LNHU 4006 E4.00ISO	40.00	4.00	20.80	6.40	•
MT LNHU 4006 E5.00ISO	40.00	5.00	20.80	6.40	•



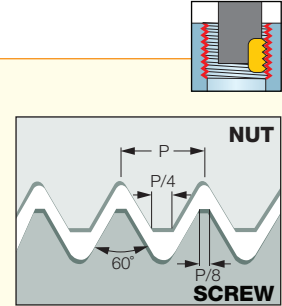
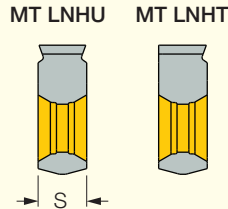
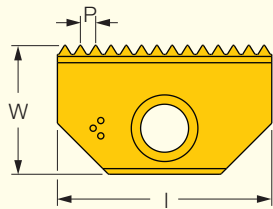
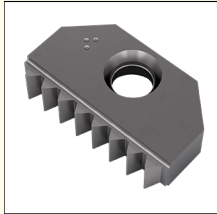


NEW		OLD		
3319979	MT LNHU 1403 E0.75ISO 908	5606972	MT14 E 0.75 ISO	IC908
5669328	MT LNHU 1403 E1.00ISO 908	5606973	MT14 E 1.00 ISO	IC908
3319980	MT LNHU 1403 E1.25ISO 908	5606974	MT14 E 1.25 ISO	IC908
5669322	MT LNHU 1403 E1.50ISO 908	5606975	MT14 E 1.50 ISO	IC908
3319981	MT LNHU 1403 E1.75ISO 908	5606976	MT14 E 1.75 ISO	IC908
5669331	MT LNHU 1403 E2.00ISO 908	5606981	MT14 E 2.00 ISO	IC908
3319982	MT LNHU 1403 E2.50ISO 908	5606982	MT14 E 2.50 ISO	IC908
5669330	MT LNHU 2104 E1.00ISO 908	5607020	MT21 E 1.00 ISO	IC908
5669324	MT LNHU 2104 E1.50ISO 908	5607021	MT21 E 1.50 ISO	IC908
5669333	MT LNHU 2104 E2.00ISO 908	5607027	MT21 E 2.00 ISO	IC908
3320073	MT LNHU 2104 E2.50ISO 908	5607028	MT21 E 2.50 ISO	IC908
3320074	MT LNHU 2104 E3.00ISO 908	5607031	MT21 E 3.00 ISO	IC908
5669325	MT LNHU 3005 E1.50ISO 908	5607065	MT30 E 1.50 ISO	IC908
5669335	MT LNHU 3005 E2.00ISO 908	5607071	MT30 E 2.00 ISO	IC908
3323363	MT LNHU 3005 E3.00ISO 908	5607073	MT30 E 3.00 ISO	IC908
3323364	MT LNHU 3005 E3.50ISO 908	5607074	MT30 E 3.50 ISO	IC908
3323365	MT LNHU 3005 E4.00ISO 908	5607075	MT30 E 4.00 ISO	IC908
3323531	MT LNHU 4006 E1.50ISO 908	5607107	MT40 E 1.50 ISO	IC908
3323532	MT LNHU 4006 E2.00ISO 908	5607112	MT40 E 2.00 ISO	IC908
3323533	MT LNHU 4006 E3.00ISO 908	5607113	MT40 E 3.00 ISO	IC908
3323534	MT LNHU 4006 E4.00ISO 908	5607114	MT40 E 4.00 ISO	IC908
3323535	MT LNHU 4006 E5.00ISO 908	5607115	MT40 E 5.00 ISO	IC908
3323536	MT LNHU 4006 E6.00ISO 908	5607117	MT40 E 6.00 ISO	IC908



MT LNH#-UN (Internal)

Thread Milling Inserts for American (UN, UNC, UNF, UNEF, UNS) Full Profile Threads for General Applications



Designation	Dimensions				IC908
	TPI	I	W	S	
MT LNHT 1202 I32UN	32.0	12.00	6.50	2.90	•
MT LNHT 1202 I28UN	28.0	12.00	6.50	2.90	•
MT LNHT 1202 I24UN	24.0	12.00	6.50	2.90	•
MT LNHT 1202 I20UN	20.0	12.00	6.50	2.90	•
MT LNHT 1202 I18UN	18.0	12.00	6.50	2.90	•
MT LNHT 1202 I16UN	16.0	12.00	6.50	2.90	•
MT LNHU 1403 I32UN	32.0	14.00	7.90	3.20	•
MT LNHU 1403 I28UN	28.0	14.00	7.90	3.20	•
MT LNHU 1403 I27UN	27.0	14.00	7.90	3.20	•
MT LNHU 1403 I24UN	24.0	14.00	7.90	3.20	•
MT LNHU 1403 I20UN	20.0	14.00	7.90	3.20	•
MT LNHU 1403 I18UN	18.0	14.00	7.90	3.20	•
MT LNHU 1403 I16UN	16.0	14.00	7.90	3.20	•
MT LNHU 1403 I14UN	14.0	14.00	7.90	3.20	•
MT LNHU 1403 I12UN	12.0	14.00	7.90	3.20	•
MT LNHU 1403 I11UN	11.0	14.00	7.90	3.20	•
MT LNHU 1403 I10UN	10.0	14.00	7.90	3.20	•
MT LNHU 2104 I24UN	24.0	21.00	12.60	4.80	•
MT LNHU 2104 I20UN	20.0	21.00	12.60	4.80	•
MT LNHU 2104 I18UN	18.0	21.00	12.60	4.80	•
MT LNHU 2104 I16UN	16.0	21.00	12.60	4.80	•
MT LNHU 2104 I14UN	14.0	21.00	12.60	4.80	•
MT LNHU 2104 I12UN	12.0	21.00	12.60	4.80	•
MT LNHU 2104 I10UN	10.0	21.00	12.60	4.80	•
MT LNHU 2104 I8UN	8.0	21.00	12.60	4.80	•
MT LNHU 2104 I7UN	7.0	21.00	12.60	4.80	•
MT LNHU 3005 I20UN	20.0	30.00	16.70	5.60	•
MT LNHU 3005 I18UN	18.0	30.00	16.70	5.60	•
MT LNHU 3005 I16UN	16.0	30.00	16.70	5.60	•
MT LNHU 3005 I14UN	14.0	30.00	16.70	5.60	•
MT LNHU 3005 I12UN	12.0	30.00	16.70	5.60	•
MT LNHU 3005 I10UN	10.0	30.00	16.70	5.60	•
MT LNHU 3005 I8UN	8.0	30.00	16.70	5.60	•
MT LNHU 3005 I6UN	6.0	30.00	16.70	5.60	•
MT LNHU 3005 I5UN	5.0	30.00	16.70	5.60	•
MT LNHU 4006 I8UN	16.0	40.00	20.80	6.40	•
MT LNHU 4006 I14UN	14.0	40.00	20.80	6.40	•
MT LNHU 4006 I12UN	12.0	40.00	20.80	6.40	•
MT LNHU 4006 I10UN	10.0	40.00	20.80	6.40	•
MT LNHU 4006 I6UN	6.0	40.00	20.80	6.40	•
MT LNHU 4006 I4.5UN	4.5	40.00	20.80	6.40	•
MT LNHU 4006 I4UN	4.0	40.00	20.80	6.40	•

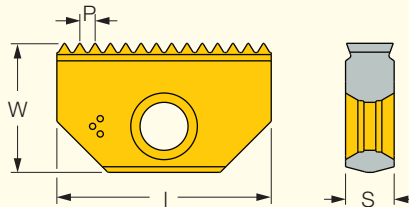
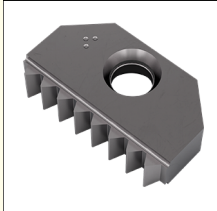
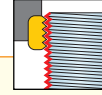


NEW			OLD		
3323075	MT LNHT 1202 I32UN	908	5606965	MT12 I 32 UN	IC908
3323077	MT LNHT 1202 I28UN	908	5606964	MT12 I 28 UN	IC908
3323078	MT LNHT 1202 I24UN	908	5606963	MT12 I 24 UN	IC908
3323090	MT LNHT 1202 I20UN	908	5606962	MT12 I 20 UN	IC908
5669452	MT LNHT 1202 I18UN	908	5606961	MT12 I 18 UN	IC908
3323108	MT LNHT 1202 I16UN	908	5606960	MT12 I 16 UN	IC908
3320020	MT LNHT 1403 I32UN	908	5607003	MT14 I 32 UN	IC908
3320019	MT LNHT 1403 I28UN	908	5607002	MT14 I 28 UN	IC908
3320018	MT LNHT 1403 I27UN	908	5607001	MT14 I 27 UN	IC908
3320001	MT LNHT 1403 I24UN	908	5607000	MT14 I 24 UN	IC908
3319999	MT LNHT 1403 I20UN	908	5606999	MT14 I 20 UN	IC908
5669465	MT LNHT 1403 I18UN	908	5606996	MT14 I 18 UN	IC908
5669459	MT LNHT 1403 I16UN	908	5606995	MT14 I 16 UN	IC908
5669462	MT LNHT 1403 I14UN	908	5606994	MT14 I 14 UN	IC908
5669461	MT LNHT 1403 I12UN	908	5606993	MT14 I 12 UN	IC908
5669469	MT LNHT 1403 I11UN	908	5607297	MT14 I 11 UN	IC908
5669463	MT LNHT 1403 I10UN	908	5680352	MT14 I 10 UN	IC908
3320107	MT LNHT 2104 I24UN	908	5607043	MT21 I 24 UN	IC908
3320106	MT LNHT 2104 I20UN	908	5607042	MT21 I 20 UN	IC908
3320105	MT LNHT 2104 I18UN	908	5607039	MT21 I 18 UN	IC908
5669482	MT LNHT 2104 I16UN	908	5607038	MT21 I 16 UN	IC908
5669485	MT LNHT 2104 I14UN	908	5607037	MT21 I 14 UN	IC908
5669518	MT LNHT 2104 I12UN	908	5607036	MT21 I 12 UN	IC908
3320095	MT LNHT 2104 I10UN	908	5607035	MT21 I 10 UN	IC908
5669473	MT LNHT 2104 I8UN	908	5607047	MT21 I 8 UN	IC908
5669481	MT LNHT 2104 I7UN	908	5607046	MT21 I 7UN	IC908
3323342	MT LNHT 3005 I20UN	908	5607085	MT30 I 20 UN	IC908
3323341	MT LNHT 3005 I18UN	908	5607083	MT30 I 18 UN	IC908
3323340	MT LNHT 3005 I16UN	908	5607082	MT30 I 16 UN	IC908
3323339	MT LNHT 3005 I14UN	908	5607081	MT30 I 14 UN	IC908
5669494	MT LNHT 3005 I12UN	908	5607080	MT30 I 12 UN	IC908
3323337	MT LNHT 3005 I10UN	908	5607079	MT30 I 10 UN	IC908
5669487	MT LNHT 3005 I8UN	908	5607093	MT30 I 8 UN	IC908
5669495	MT LNHT 3005 I6UN	908	5607092	MT30 I 6 UN	IC908
3323343	MT LNHT 3005 I5UN	908	5607090	MT30 I 5 UN	IC908
3323506	MT LNHT 4006 I16UN	908	5607123	MT40 I 16 UN	IC908
3323505	MT LNHT 4006 I14UN	908	5607122	MT40 I 14 UN	IC908
3323504	MT LNHT 4006 I12UN	908	5607121	MT40 I 12 UN	IC908
3323502	MT LNHT 4006 I10UN	908	5607120	MT40 I 10 UN	IC908
5669498	MT LNHT 4006 I8UN	908	5607135	MT40 I 8 UN	IC908
3323509	MT LNHT 4006 I6UN	908	5607133	MT40 I 6 UN	IC908
3323508	MT LNHT 4006 I4.5UN	908	5607130	MT40 I 4.50 UN	IC908
3323507	MT LNHT 4006 I4UN	908	5607128	MT40 I 4.00 UN	IC908

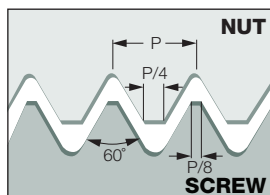


MT LNHU-UN (External)

External UN (UN, UNC, UNF, UNEF, UNS) Full Profile Thread
Milling Inserts, for General Industries



Designation	Dimensions				IC908
	TPI	I	W	S	
MT LNHU 1403 E32UN	32.0	14.00	7.90	3.20	•
MT LNHU 1403 E28UN	28.0	14.00	7.90	3.20	•
MT LNHU 1403 E24UN	24.0	14.00	7.90	3.20	•
MT LNHU 1403 E20UN	20.0	14.00	7.90	3.20	•
MT LNHU 1403 E18UN	18.0	14.00	7.90	3.20	•
MT LNHU 1403 E16UN	16.0	14.00	7.90	3.20	•
MT LNHU 1403 E14UN	14.0	14.00	7.90	3.20	•
MT LNHU 1403 E12UN	12.0	14.00	7.90	3.20	•
MT LNHU 2104 E24UN	24.0	21.00	12.60	4.80	•
MT LNHU 2104 E20UN	20.0	21.00	12.60	4.80	•
MT LNHU 2104 E18UN	18.0	21.00	12.60	4.80	•
MT LNHU 2104 E16UN	16.0	21.00	12.60	4.80	•
MT LNHU 2104 E14UN	14.0	21.00	12.60	4.80	•
MT LNHU 2104 E12UN	12.0	21.00	12.60	4.80	•
MT LNHU 2104 E10UN	10.0	21.00	12.60	4.80	•
MT LNHU 3005 E20UN	20.0	30.00	16.70	5.60	•
MT LNHU 3005 E18UN	18.0	30.00	16.70	5.60	•
MT LNHU 3005 E16UN	16.0	30.00	16.70	5.60	•
MT LNHU 3005 E14UN	14.0	30.00	16.70	5.60	•
MT LNHU 3005 E12UN	12.0	30.00	16.70	5.60	•
MT LNHU 3005 E10UN	10.0	30.00	16.70	5.60	•
MT LNHU 3005 E8UN	8.0	30.00	16.70	5.60	•
MT LNHU 3005 E6UN	6.0	30.00	16.70	5.60	•
MT LNHU 4006 E16UN	16.0	40.00	20.80	6.40	•
MT LNHU 4006 E14UN	14.0	40.00	20.80	6.40	•
MT LNHU 4006 E12UN	12.0	40.00	20.80	6.40	•
MT LNHU 4006 E10UN	10.0	40.00	20.80	6.40	•
MT LNHU 4006 E8UN	8.0	40.00	20.80	6.40	•
MT LNHU 4006 E6UN	6.0	40.00	20.80	6.40	•



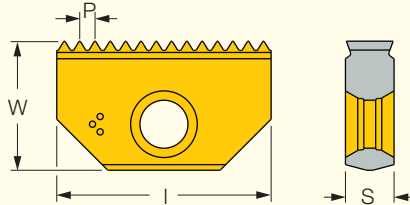
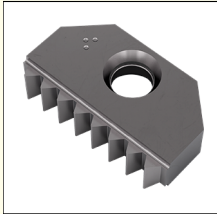


NEW			OLD		
5669470	MT LNHU 1403 E32UN	908	5606986	MT14 E 32 UN	IC908
3319998	MT LNHU 1403 E28UN	908	5606985	MT14 E 28 UN	IC908
3319997	MT LNHU 1403 E24UN	908	5606984	MT14 E 24 UN	IC908
3319991	MT LNHU 1403 E20UN	908	5606983	MT14 E 20 UN	IC908
3319990	MT LNHU 1403 E18UN	908	5606980	MT14 E 18 UN	IC908
3319989	MT LNHU 1403 E16UN	908	5606979	MT14 E 16 UN	IC908
3319988	MT LNHU 1403 E14UN	908	5606978	MT14 E 14 UN	IC908
3319987	MT LNHU 1403 E12UN	908	5606977	MT14 E 12 UN	IC908
3320093	MT LNHU 2104 E24UN	908	5607030	MT21 E 24 UN	IC908
3320091	MT LNHU 2104 E20UN	908	5607029	MT21 E 20 UN	IC908
3320090	MT LNHU 2104 E18UN	908	5607026	MT21 E 18 UN	IC908
3320088	MT LNHU 2104 E16UN	908	5607025	MT21 E 16 UN	IC908
3320087	MT LNHU 2104 E14UN	908	5607024	MT21 E 14 UN	IC908
3320082	MT LNHU 2104 E12UN	908	5607023	MT21 E 12 UN	IC908
3320079	MT LNHU 2104 E10UN	908	5607022	MT21 E 10 UN	IC908
3323349	MT LNHU 3005 E20UN	908	5607072	MT30 E 20 UN	IC908
3323348	MT LNHU 3005 E18UN	908	5607070	MT30 E 18 UN	IC908
3323347	MT LNHU 3005 E16UN	908	5607069	MT30 E 16 UN	IC908
3323346	MT LNHU 3005 E14UN	908	5607068	MT30 E 14 UN	IC908
3323352	MT LNHU 3005 E12UN	908	5607067	MT30 E 12 UN	IC908
3323344	MT LNHU 3005 E10UN	908	5607066	MT30 E 10 UN	IC908
3323351	MT LNHU 3005 E8UN	908	5607077	MT30 E 8 UN	IC908
3323350	MT LNHU 3005 E6UN	908	5607076	MT30 E 6 UN	IC908
3323514	MT LNHU 4006 E16UN	908	5607111	MT40 E 16 UN	IC908
3323512	MT LNHU 4006 E14UN	908	5607110	MT40 E 14 UN	IC908
3323511	MT LNHU 4006 E12UN	908	5607109	MT40 E 12 UN	IC908
3323510	MT LNHU 4006 E10UN	908	5607108	MT40 E 10 UN	IC908
3323516	MT LNHU 4006 E8UN	908	5607118	MT40 E 8 UN	IC908
3323515	MT LNHU 4006 E6UN	908	5607116	MT40 E 6 UN	IC908

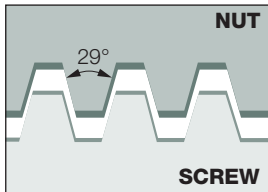


MT LNHT-ACME (Internal)

Internal ACME Profile Thread Milling Inserts, for Feed Screws



Designation	Dimensions				IC908
	TPI	I	W	S	
MT LNHT 2104 I12ACME	12.0	21.00	12.00	4.70	•
MT LNHT 2104 I10ACME	10.0	21.00	12.00	4.70	•
MT LNHT 3005 I12ACME	12.0	30.00	16.00	5.50	•
MT LNHT 3005 I10ACME	10.0	30.00	16.00	5.50	•
MT LNHT 3005 I8ACME	8.0	30.00	16.00	5.50	•
MT LNHT 3005 I6ACME	6.0	30.00	16.00	5.50	•
MT LNHT 3005 I5ACME	5.0	30.00	16.00	5.50	•
MT LNHT 3005 I4ACME	4.0	30.00	16.00	5.50	•
MT LNHT 4006 I4ACME	4.0	40.00	20.00	6.30	•
MT LNHT 4006 I3.5ACME	3.5	40.00	20.00	6.30	•
MT LNHT 4006 I3ACME	3.0	40.00	20.00	6.30	•

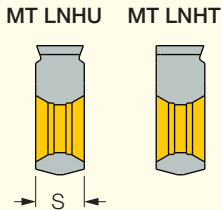
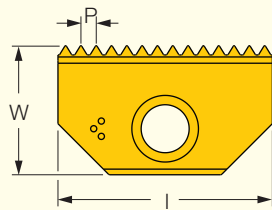
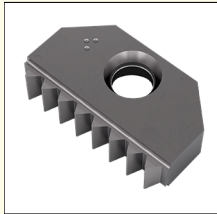
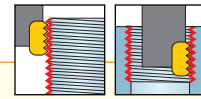


NEW		OLD		
3323498	MT LNHT 2104 I12ACME 908	5668748	MT21 I 12 ACME	IC908
3323497	MT LNHT 2104 I10ACME 908	5668749	MT21 I 10 ACME	IC908
3323367	MT LNHT 3005 I12ACME 908	5668750	MT30 I 12 ACME	IC908
3323366	MT LNHT 3005 I10ACME 908	5668751	MT30 I 10 ACME	IC908
3323371	MT LNHT 3005 I8ACME 908	5668752	MT30 I 8 ACME	IC908
3323369	MT LNHT 3005 I6ACME 908	5668753	MT30 I 6 ACME	IC908
3323370	MT LNHT 3005 I5ACME 908	5668754	MT30 I 5 ACME	IC908
3323368	MT LNHT 3005 I4ACME 908	5682051	MT30 I 4 ACME	IC908
5669520	MT LNHT 4006 I4ACME 908	5682330	MT40 I 4 ACME	IC908
3323539	MT LNHT 4006 I3.5ACME 908	5668755	MT40 I 3.5 ACME	IC908
3323537	MT LNHT 4006 I3ACME 908	5668756	MT40 I 3 ACME	IC908

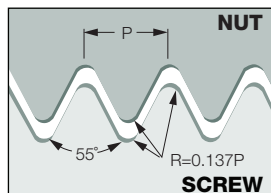


MT LNH#-W

External & Internal Whitworth (BSW, BSF, BSP) Full Profile Thread Milling Inserts, for Fittings and Pipe Couplings



Designation	Dimensions				IC908
	TPI	I	W	S	
MT LNHT 1202 19W	19.0	12.00	6.50	2.90	•
MT LNHU 1403 24W	24.0	14.00	7.90	3.20	•
MT LNHU 1403 20W	20.0	14.00	7.90	3.20	•
MT LNHU 1403 19W	19.0	14.00	7.90	3.20	•
MT LNHU 1403 16W	16.0	14.00	7.90	3.20	•
MT LNHU 1403 14W	14.0	14.00	7.90	3.20	•
MT LNHU 2104 20W	20.0	21.00	12.60	4.80	•
MT LNHU 2104 19W	19.0	21.00	12.60	4.80	•
MT LNHU 2104 16W	16.0	21.00	12.60	4.80	•
MT LNHU 2104 14W	14.0	21.00	12.60	4.80	•
MT LNHU 2104 11W	11.0	21.00	12.60	4.80	•
MT LNHU 3005 16W	16.0	30.00	16.70	5.60	•
MT LNHU 3005 14W	14.0	30.00	16.70	5.60	•
MT LNHU 3005 11W	11.0	30.00	16.70	5.60	•
MT LNHU 4006 11W	11.0	40.00	20.80	6.40	•
MT LNHU 4006 8W	8.0	40.00	20.80	6.40	•

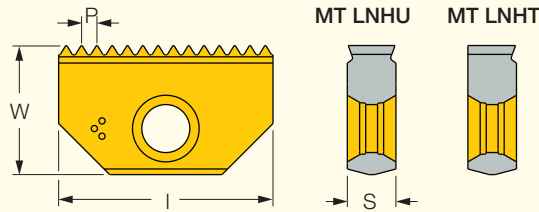
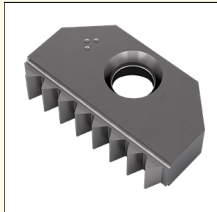
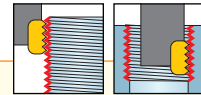


NEW			OLD		
5669451	MT LNHT 1202 19W	908	5606971	MT12 19 W	IC908
3320023	MT LNHU 1403 24W	908	5607019	MT14 24 W	IC908
3320021	MT LNHU 1403 20W	908	5607018	MT14 20 W	IC908
5669464	MT LNHU 1403 19W	908	5607017	MT14 19 W	IC908
3320024	MT LNHU 1403 16W	908	5607010	MT14 16 W	IC908
5669460	MT LNHU 1403 14W	908	5607009	MT14 14 W	IC908
3320123	MT LNHU 2104 20W	908	5607064	MT21 20 W	IC908
3320122	MT LNHU 2104 19W	908	5607063	MT21 19 W	IC908
3320121	MT LNHU 2104 16W	908	5607061	MT21 16 W	IC908
5669480	MT LNHU 2104 14W	908	5607059	MT21 14 W	IC908
5669474	MT LNHU 2104 11W	908	5607049	MT21 11 W	IC908
3323451	MT LNHT 3005 16W	908	5607102	MT30 16 W	IC908
3323450	MT LNHT 3005 14W	908	5607100	MT30 14 W	IC908
5669492	MT LNHU 3005 11W	908	5607095	MT30 11 W	IC908
3323540	MT LNHU 4006 11W	908	5607137	MT40 11 W	IC908
3323541	MT LNHU 4006 8W	908	5607146	MT40 8 W	IC908



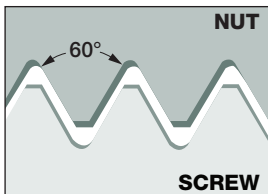
MT LNH#-NPS

External and Internal NPS Full Profile Thread Milling Inserts for Mechanical Joining and Pipe Fittings



Designation	Dimensions				IC908
	TPI	I	W	S	
MT LNHT 1202 18NPS	18.0	12.00	6.30	2.90	•
MT LNHU 1403 18NPS	18.0	14.00	7.50	3.10	•
MT LNHU 1403 1SNPS	14.0	14.00	7.50	3.10	•
MT LNHU 2104 14NPS	14.0	21.00	12.00	4.70	•
MT LNHU 2104 11.5NPS	11.5	21.00	12.00	4.70	•
MT LNHU 3005 11.5NPS	11.5	30.00	16.00	5.51	•
MT LNHU 3005 8NPS	8.0	30.00	16.00	5.51	•
MT LNHU 4006 11.5NPS	11.5	40.00	20.00	6.30	•
MT LNHU 4006 8NPS	8.0	40.00	20.00	6.30	•

• The same insert for external & internal thread.

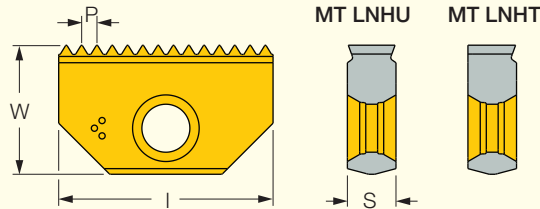
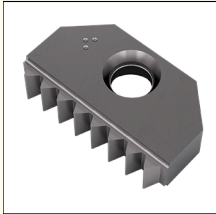
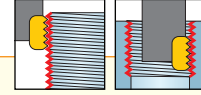


NEW			OLD		
3323130	MT LNHT 1202 18NPS	908	5606966	MT12 18 NPS	IC908
3320031	MT LNHT 1403 18NPS	908	5607011	MT14 18 NPS	IC908
3320032	MT LNHT 1403 14NPS	908	5607005	MT14 14 NPS	IC908
3320129	MT LNHT 2104 14NPS	908	5607055	MT21 14 NPS	IC908
3320128	MT LNHT 2104 11.5NPS	908	5607050	MT21 11.5 NPS	IC908
3323373	MT LNHT 3005 11.5NPS	908	5607096	MT30 11.5 NPS	IC908
3323376	MT LNHT 3005 8NPS	908	5607103	MT30 8 NPS	IC908
3323542	MT LNHT 4006 11.5NPS	908	5607138	MT40 11.5 NPS	IC908
3323543	MT LNHT 4006 8NPS	908	5607142	MT40 8 NPS	IC908



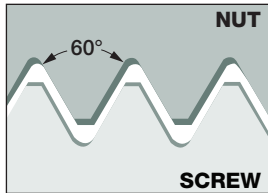
MT LNH#-NPSF

External and Internal NPSF Full Profile Thread Milling Inserts



Designation	Dimensions				IC908
	TPI	I	W	S	
MT LNHT 1202 18NPSF	18.0	0.47	0.25	0.11	•
MT LNHU 1403 18NPSF	18.0	0.55	0.30	0.12	•
MT LNHU 1403 14NPSF	14.0	0.55	0.30	0.12	•
MT LNHU 2104 14NPSF	14.0	0.83	0.47	0.19	•
MT LNHU 2104 11.5NPSF	11.5	0.83	0.47	0.19	•
MT LNHU 3005 11.5NPSF	11.5	1.18	0.63	0.22	•
MT LNHU 3005 8NPSF	8.0	1.18	0.63	0.22	•
MT LNHU 4006 11.5NPSF	11.5	1.58	0.79	0.25	•
MT LNHU 4006 8NPSF	8.0	1.58	0.79	0.25	•

• The same insert for external & internal thread.

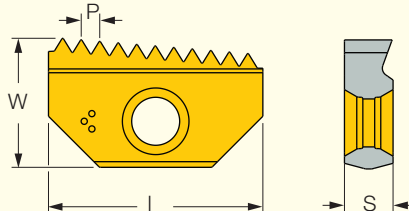
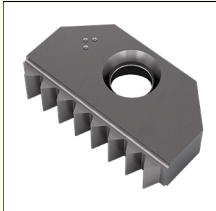
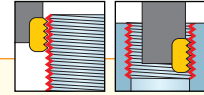


NEW			OLD		
3323136	MT LNHT 1202 18NPSF	908	5606967	MT12 18 NPSF	IC908
3320029	MT LNHT 1403 18NPSF	908	5607012	MT14 18 NPSF	IC908
3320030	MT LNHT 1403 14NPSF	908	5607006	MT14 14 NPSF	IC908
3320132	MT LNHT 2104 14NPSF	908	5607056	MT21 14 NPSF	IC908
3320130	MT LNHT 2104 11.5NPSF	908	5607051	MT21 11.5 NPSF	IC908
3323374	MT LNHT 3005 11.5NPSF	908	5607097	MT30 11.5 NPSF	IC908
3323377	MT LNHT 3005 8NPSF	908	5607104	MT30 8 NPSF	IC908
3323544	MT LNHT 4006 11.5NPSF	908	5607139	MT40 11.5 NPSF	IC908
3323545	MT LNHT 4006 8NPSF	908	5607143	MT40 8 NPSF	IC908

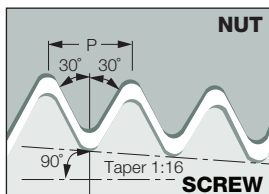


MT LNHT-NPT

External and Internal NPT Full Profile Thread Milling Inserts, for Steam, Gas and Water Pipes



Designation	Dimensions				IC908
	TPI	I	W	S	
MT LNHT 1202 18NPT	18.0	12.00	6.50	2.90	•
MT LNHT 1403 18NPT	18.0	14.00	7.90	3.20	•
MT LNHT 1403 14NPT	14.0	14.00	7.90	3.20	•
MT LNHT 2104 14NPT	14.0	21.00	12.60	4.80	•
MT LNHT 2104 11.5NPT	11.5	21.00	12.60	4.80	•
MT LNHT 3005 11.5NPT	11.5	30.00	16.70	5.60	•
MT LNHT 3005 8NPT	8.0	30.00	16.70	5.60	•
MT LNHT 4006 11.5NPT	11.5	40.00	20.80	6.40	•
MT LNHT 4006 8NPT	8.0	40.00	20.80	6.40	•

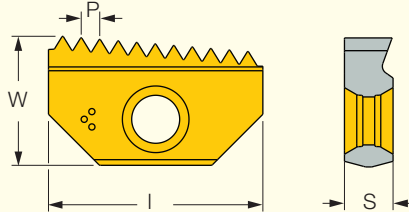
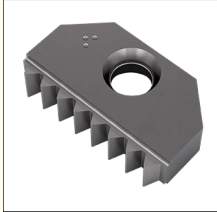
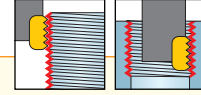


NEW			OLD		
5669450	MT LNHT 1202 18NPT	908	5606968	MT12 18 NPT	IC908
5669467	MT LNHT 1403 18NPT	908	5607013	MT14 18 NPT	IC908
5669458	MT LNHT 1403 14NPT	908	5607007	MT14 14 NPT	IC908
5669479	MT LNHT 2104 14NPT	908	5607057	MT21 14 NPT	IC908
5669476	MT LNHT 2104 11.5NPT	908	5607052	MT21 11.5 NPT	IC908
5669491	MT LNHT 3005 11.5NPT	908	5607098	MT30 11.5 NPT	IC908
5669493	MT LNHT 3005 8NPT	908	5607105	MT30 8 NPT	IC908
3323546	MT LNHT 4006 11.5NPT	908	5607140	MT40 11.5 NPT	IC908
3323547	MT LNHT 4006 8NPT	908	5607144	MT40 8 NPT	IC908

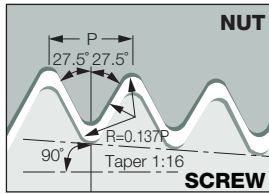


MT LNHT-BSPT

External and Internal Thread Milling Inserts for BSPT Full Profile



Designation	Dimensions				IC908
	TPI	I	W	S	
MT LNHT 1202 19BSPT	19.0	12.00	6.50	2.90	•
MT LNHT 1403 19BSPT	19.0	14.00	7.90	3.20	•
MT LNHT 1403 14BSPT	14.0	14.00	7.90	3.20	•
MT LNHT 2104 14BSPT	14.0	21.00	12.60	4.80	•
MT LNHT 2104 11BSPT	11.0	21.00	12.60	4.80	•
MT LNHT 3005 11BSPT	11.0	30.00	16.70	5.60	•
MT LNHT 4006 11BSPT	11.0	40.00	20.80	6.40	•

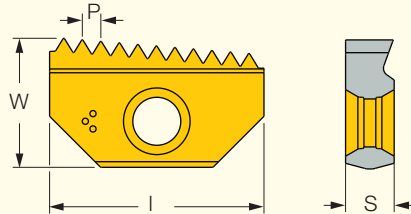
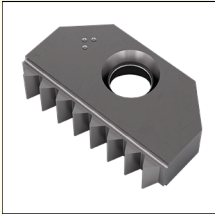
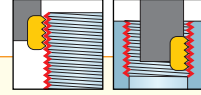


NEW			OLD		
3323185	MT LNHT 1202 19BSPT 908	5606970	5606970	MT12 19 BSPT IC908	IC908
3320026	MT LNHT 1403 19BSPT 908	5607016	5607016	MT14 19 BSPT IC908	IC908
5669466	MT LNHT 1403 14BSPT 908	5607004	5607004	MT14 14 BSPT IC908	IC908
3320126	MT LNHT 2104 14BSPT 908	5607054	5607054	MT21 14 BSPT IC908	IC908
5669484	MT LNHT 2104 11BSPT 908	5607048	5607048	MT21 11 BSPT IC908	IC908
3323449	MT LNHT 3005 11BSPT 908	5607094	5607094	MT30 11 BSPT IC908	IC908
3323551	MT LNHT 4006 11BSPT 908	5607136	5607136	MT40 11 BSPT IC908	IC908

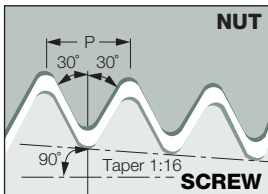


MT LNHT-NPTF

External and Internal NPTF Full Profile Thread Milling Inserts, for Steam, Gas and Water Pipes



Designation	Dimensions				IC908
	TPI	I	W	S	
MT LNHT 1202 18NPTF	18.0	12.00	6.50	2.90	•
MT LNHT 1403 18NPTF	18.0	14.00	7.90	3.20	•
MT LNHT 1403 14NPTF	14.0	14.00	7.90	3.20	•
MT LNHT 2104 14NPTF	14.0	21.00	12.80	4.80	•
MT LNHT 2104 11.5NPTF	11.5	21.00	12.60	4.80	•
MT LNHT 3005 11.5NPTF	11.5	30.00	16.70	5.60	•
MT LNHT 3005 8NPTF	8.0	30.00	16.70	5.60	•
MT LNHT 4006 11.5NPTF	11.5	40.00	20.80	6.40	•
MT LNHT 4006 8NPTF	8.0	40.00	20.80	6.40	•

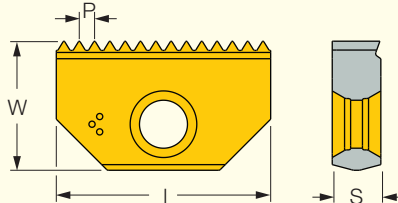
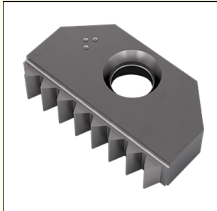
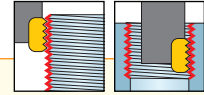


NEW			OLD		
3323149	MT LNHT 1202 18NPTF 908	5606969	MT12 18 NPTF	IC908	
3320027	MT LNHT 1403 18NPTF 908	5607014	MT14 18 NPTF	IC908	
3320028	MT LNHT 1403 14NPTF 908	5607008	MT14 14 NPTF	IC908	
3320125	MT LNHT 2104 14NPTF 908	5607058	MT21 14 NPTF	IC908	
5669478	MT LNHT 2104 11.5NPTF 908	5607053	MT21 11.5 NPTF	IC908	
3323375	MT LNHT 3005 11.5NPTF 908	5607099	MT30 11.5 NPTF	IC908	
3323372	MT LNHT 3005 8NPTF 908	5607106	MT30 8 NPTF	IC908	
3323550	MT LNHT 4006 8NPTF 908	5607145	MT40 8 NPTF	IC908	
3323549	MT LNHT 4006 11.5NPTF	5607141	MT40 11.5 NPTF	IC908	

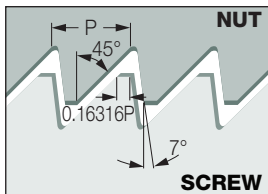


MT LNHT-ABUT

External & Internal Single-Sided American Buttress Thread Milling Inserts



Designation	Dimensions					IC908
	TPI	I	W	S		
MT LNHT 2104 16ABUT	16.0	21.00	12.00	4.70	•	
MT LNHT 2104 12ABUT	12.0	21.00	12.00	4.70	•	
MT LNHT 2104 10ABUT	10.0	21.00	12.00	4.70	•	
MT LNHT 2104 8ABUT	8.0	21.00	12.00	4.70	•	
MT LNHT 3005 16ABUT	16.0	30.00	16.00	5.50	•	
MT LNHT 3005 12ABUT	12.0	30.00	16.00	5.50	•	
MT LNHT 3005 10ABUT	10.0	30.00	16.00	5.50	•	
MT LNHT 3005 8ABUT	8.0	30.00	16.00	5.50	•	
MT LNHT 3005 6ABUT	6.0	30.00	16.00	5.50	•	
MT LNHT 3005 4ABUT	4.0	30.00	16.00	5.50	•	
MT LNHT 4006 4ABUT	4.0	40.00	20.00	6.30	•	

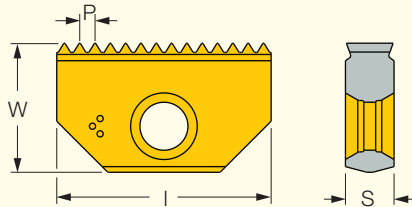
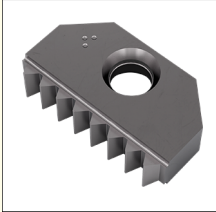
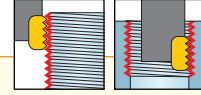


NEW			OLD		
3323495	MT LNHT 2104 16ABUT 908	5668737	MT21 16 ABUT	IC908	
3323494	MT LNHT 2104 12ABUT 908	5668738	MT21 12 ABUT	IC908	
3323493	MT LNHT 2104 10ABUT 908	5668739	MT21 10 ABUT	IC908	
3323496	MT LNHT 2104 8ABUT 908	5668740	MT21 8 ABUT	IC908	
3323447	MT LNHT 3005 16ABUT 908	5668741	MT30 16 ABUT	IC908	
3323379	MT LNHT 3005 12ABUT 908	5668742	MT30 12 ABUT	IC908	
3323378	MT LNHT 3005 10ABUT 908	5668743	MT30 10 ABUT	IC908	
3323448	MT LNHT 3005 8ABUT 908	5668744	MT30 8 ABUT	IC908	
5669519	MT LNHT 3005 6ABUT 908	5683638	MT30 6 ABUT	IC908	
5669496	MT LNHT 3005 4ABUT 908	5668746	MT30 4 ABUT	IC908	
3323553	MT LNHT 4006 4ABUT 908	5668747	MT40 4 ABUT	IC908	

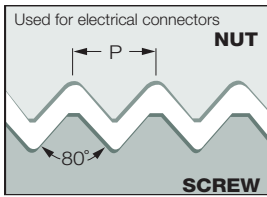


MT LNHU-PG

External and Internal PG Full Profile Thread Milling Inserts (DIN 40430), for Electrical Connectors



Designation	Dimensions					IC908
	TPI	I	P _G	W	S	
MT LNHU 1403 18PG	18.0	14.00	PG9,11,13.5,16	7.90	3.20	•
MT LNHU 2104 18PG	18.0	21.00	PG16	12.60	4.80	•
MT LNHU 2104 16PG	16.0	21.00	PG21,29,36,42,48	12.60	4.80	•
MT LNHU 3005 16PG	16.0	30.00	PG36,42,48	16.70	5.60	•

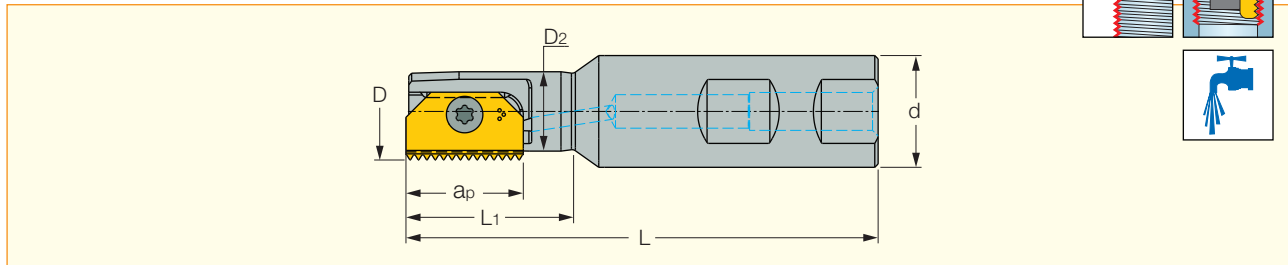


NEW			OLD		
3320025	MT LNHU 1403 18PG	908	5607015	MT14 18 PG	IC908
3320134	MT LNHT 2104 18PG	908	5607062	MT21 18 PG	IC908
3320133	MT LNHT 2104 16PG	908	5607060	MT21 16 PG	IC908
3323452	MT LNHT 3005 16PG	908	5607101	MT30 16 PG	IC908



MTE D

Indexable Threading Endmills



Designation	a_p	D	d	D_2	L_1	L	Shank	Nxcm	kg	SR	BLD	SW
MTE D09.5-1-W20-12	12.00	9.50	20.00	7.50	15.5	85.00	W	128	0.16	SR M2.5-T8-MT	BLD T08/M7	SW4-SD
MTE D09.9-1-W20-12	12.00	9.90	20.00	7.50	16.0	85.00	W	128	0.16	SR M2.5-T8-MT	BLD T08/M7	SW4-SD
MTE D12.2-1-W20-14	14.00	12.00	20.00	8.60	20.0	75.00	W	128	0.15	SR M2.6-T8-MT	BLD T08/M7	SW4-SD
MTE D14.5-1-W20-14	14.00	14.50	20.00	11.20	25.0	85.00	W	128	0.16	SR M2.6-T8-MT	BLD T08/M7	SW4-SD
MTE D17.0-1-W20-14	14.00	17.00	20.00	12.80	30.0	85.00	W	128	0.23	SR M2.6-T8-MT	BLD T08/M7	SW4-SD
MTE D18-1-W20-21	21.00	18.00	20.00	14.20	30.0	85.00	W	515	0.20	SR M4-IP15-MT	BLD IP15/S7	SW6-SD
MTE D21-1-W20-21	21.00	21.00	20.00	15.90	40.0	94.00	W	515	0.23	SR M4-IP15-MT	BLD IP15/S7	SW6-SD
MTE D25-1-W20-21	21.00	25.00	20.00	-	-	125.00	W	515	0.24	SR M4-IP15-MT	BLD IP15/S7	SW6-SD
MTE D29-1-W25-30	30.00	29.00	25.00	22.20	50.0	110.00	W	1020	0.32	SR M5-IP25-MT	BLD IP25/S7	SW6-T
MTE D31-1-W25-30	30.00	31.00	25.00	-	-	150.00	W	1020	0.60	SR M5-IP25-MT	BLD IP25/S7	SW6-T
MTE D38-1-W32-30	30.00	38.00	32.00	-	-	150.00	W	1020	0.90	SR M5-IP25-MT	BLD IP25/S7	SW6-T
MTE D48-1-W40-40	40.00	48.00	40.00	35.00	78.0	153.00	W	1020	1.30	SR M5-IP25-MT	BLD IP25/S7	SW6-T
MTE D48-1-W40-40-B	40.00	48.00	40.00	-	-	210.00	W	1020	1.50	SR M5-IP25-MT	BLD IP25/S7	SW6-T

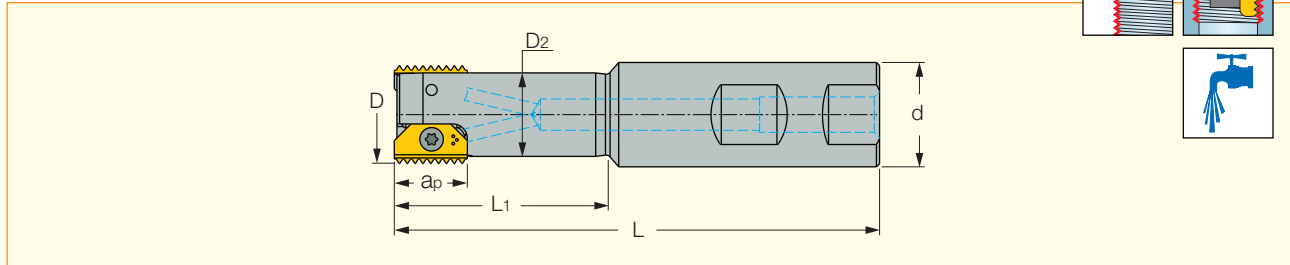
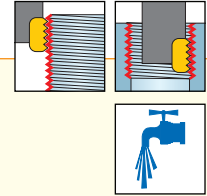
• Minimum bore should be one-third larger than D • All endmills are equipped with a bore for internal coolant

NEW		OLD	
3108487	MTE D09.5-1-W20-12	3195730	MTSR 0009 H12
3108494	MTE D09.9-1-W20-12	3193970	MTSR 0010 H12
3108481	MTE D12.2-1-W20-14	3102017	MTSR 0012 F14
3314786	MTE D14.5-1-W20-14	3102193	MTSR 0014 H14
3108483	MTE D17.0-1-W20-14	3102018	MTSR 0017 H14
3108482	MTE D18-1-W20-21	3102194	MTSR 0018 H21
3108480	MTE D21-1-W20-21	3102019	MTSR 0021 H21
3108486	MTE D25-1-W20-21	3104364	MTSR 0025 K21
3108491	MTE D29-1-W25-30	3102020	MTSR 0029 J30
3108488	MTE D31-1-W25-30	3104365	MTSR 0031 M30
3323453	MTE D38-1-W32-30	3104366	MTSR 0038 M30
3108511	MTE D48-1-W40-40	3102195	MTSR 0048 M40
3323555	MTE D48-1-W40-40-B	3181119	MTSR 0048 R40



MTE D(Double Insert)

Double Insert Threading Endmills with Weldon Shanks



Designation	a_p	D	d	D_2	L_1	L	Shank	Nxcm				
MTE D20.0-2-W20-14	14.00	20.00	20.00	16.00	41.0	93.00	W	128	0.20	SR M2.6-T8-MT	BLD T08/M7	SW4-SD
MTE D30-2-W25-21	21.00	30.00	25.00	24.00	52.0	108.00	W	515	0.40	SR M4-IP15-MT	BLD IP15/S7	SW6-SD
MTE D40-2-W32-30	30.00	40.00	32.00	30.00	70.0	130.00	W	1020	0.70	SR M5-IP25-MT	BLD IP25/S7	SW6-T
MTE D50-2-W40-40	40.00	50.00	40.00	38.00	78.0	153.00	W	1020	0.80	SR M5-IP25-MT	BLD IP25/S7	SW6-T

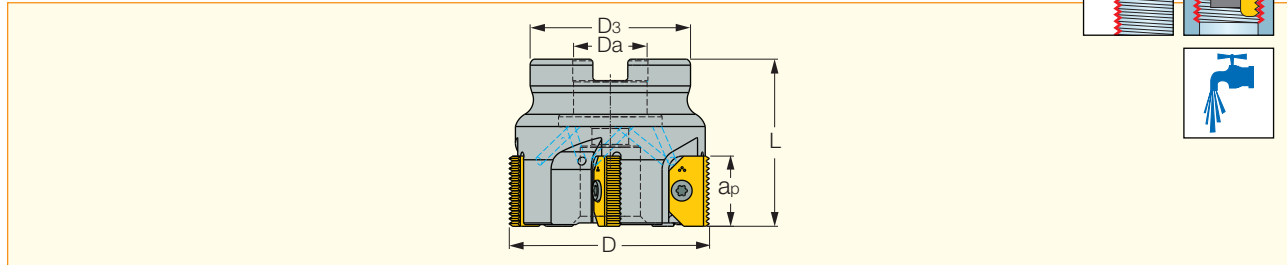
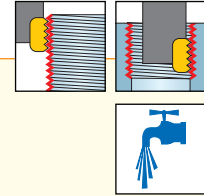
• Minimum bore should be one-third larger than D • All endmills are equipped with a bore for internal coolant

NEW		OLD	
3181266	MTE D20.0-2-W20-14	3102199	MTSR 0020 H14-2
3181267	MTE D30-2-W25-21	3102200	MTSR 0030 J21-2
3107362	MTE D40-2-W32-30	3102201	MTSR 0040 L30-2
3323557	MTE D50-2-W40-40	3102202	MTSR 0050 M40-2



MTF D(Shell Mill)

Thread Milling Multi-Insert Shell Mills



Designation	D	a_p	Z	D_3	D_a	L	Nxcm	
MTF D063-5-22-21	63.00	21.00	5	40.00	22.00	50.00	515	0.70
MTF D063-4-22-30	63.00	30.00	4	48.00	22.00	50.00	1020	0.00
MTF D080-4-27-30	80.00	30.00	4	60.00	27.00	50.00	1020	0.00
MTF D080-4-27-40	80.00	40.00	4	60.00	27.00	65.00	1020	0.00
MTF D100-4-32-30	100.00	30.00	4	78.00	32.00	50.00	1020	0.00
MTF D100-4-32-40	100.00	40.00	4	78.00	32.00	65.00	1020	0.00

Spare Parts



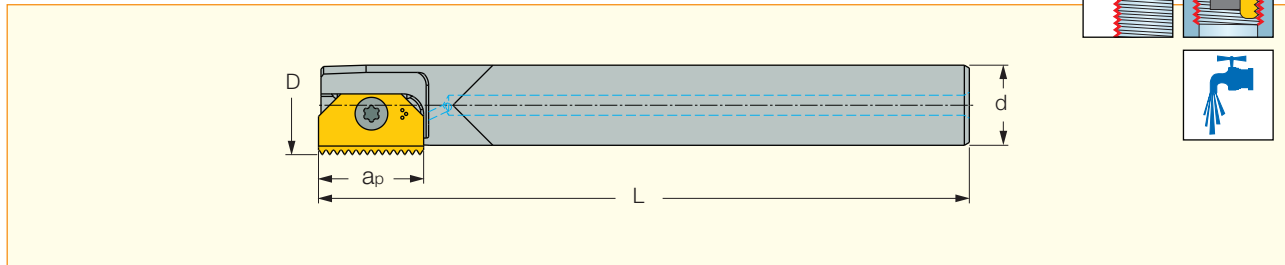
Designation	Screw	Screw 1	Torx Blade	Handle
MTF D063-5-22-21	SR M4-IP15-MT	SR M10X25 DIN912	BLD IP15/S7	SW6-SD
MTF D063-4-22-30	SR M5-IP25-MT	SR M10X25 DIN912	BLD IP25/S7	SW6-T
MTF D080-4-27-40	SR M5-IP25-MT	SR M12X25	BLD IP25/S7	SW6-T
MTF D100-4-32-40	SR M5-IP25-MT	SR M16X30 DIN912	BLD IP25/S7	SW6-T


NEW		OLD	
3108508	MTF D063-5-22-21	3103172	M TSR 0063 C21-5-22
3108509	MTF D063-4-22-30	3103173	M TSR 0063 C30-4-22
3323474	MTF D080-4-27-30	3103174	M TSR 0080 D30-4-27
3323476	MTF D100-4-32-30	3103175	M TSR 0100 D30-4-32
3323559	MTF D080-4-27-40	3103176	M TSR 0080 D40-4-27
3323561	MTF D100-4-32-40	3103177	M TSR 0100 E40-4-32



MTE D-C

Indexable Threading Endmills with Cylindrical Carbide Shanks



Designation	a_p	D	d	D_2	L	Shank	Nxcm	
MTE D09.9-1-C08C-12	12.00	9.90	8.00	8.00	127.00	C	128	0.10
MTE D13.7-1-C10C-14	14.00	13.20	10.00	10.00	110.00	C	128	0.12
MTE D13.7-1-C10C-14-B	14.00	13.20	10.00	10.00	153.50	C	128	0.17
MTE D15.2-1-C12C-14	14.00	15.20	12.00	12.00	182.30	C	128	0.30
MTE D21-1-C16C-21	21.00	21.00	16.00	16.00	130.00	C	515	0.35
MTE D21-1-C16C-21-B	21.00	21.00	16.00	16.00	206.30	C	515	0.50
MTE D27-1-C20C-30	30.00	27.00	20.00	20.00	263.00	C	1020	1.20

• For holders with long overhang, reduce the cutting speed and feed rate, between 20 to 40% (depending on workpiece, material, pitch and overhang)

Spare Parts



Designation	Screw	Torx Blade	Handle
MTE D09.9-1-C08C-12	SR M2.5-T8-MT	BLD T08/M7	SW4-SD
MTE D13.7-1-C10C-14	SR M2.6-T8-MT	BLD T08/M7	SW4-SD
MTE D13.7-1-C10C-14-B	SR M2.6-T8-MT	BLD T08/M7	SW4-SD
MTE D15.2-1-C12C-14	SR M2.6-T8-MT	BLD T08/M7	SW4-SD
MTE D21-1-C16C-21	SR M4-IP15-MT	BLD IP15/S7	SW6-SD
MTE D21-1-C16C-21-B	SR M4-IP15-MT	BLD IP15/S7	SW6-SD
MTE D27-1-C20C-30	SR M5-IP25-MT-S	BLD IP25/S7	SW6-T

NEW		OLD	
3108490	MTE D09.9-1-C08C-12	3103029	MTSR 0010 K12C
3108484	MTE D13.7-1-C10C-14	3105402	MTSR 0013 H14C
3108489	MTE D13.7-1-C10C-14-B	3102196	MTSR 0013 J14C
3108495	MTE D15.2-1-C12C-14	3102197	MTSR 0015 K14C
3108498	MTE D21-1-C16C-21	3105403	MTSR 0021 K21C
3108496	MTE D21-1-C16C-21-B	3102198	MTSR 0021 M21C
3108506	MTE D27-1-C20C-30	3103959	MTSR 0027 S30C