

# SAW SELECTION GUIDE

## Saws

	BLADE LENGTH	POINTS PER INCH	HANDLE TYPE	MATERIALS				APPLICATIONS			
				WOOD	METAL	PLASTIC	DRYWALL	FRAMING	ROOFING	WOOD FLOORING	FINISH WORK
<b>PANEL SAWS</b>											
FatMax® Saw w/ BladeArmor™ Coating 20-046, 20-047	15" & 20"	9	Wood/ Rubber	X			X	X			
FatMax® Saw 20-045	15"	9	Wood/ Rubber	X			X	X			
Fine Finish Saw w/Rubber Grip 20-526, 20-527	15" & 20"	12	Rubber/ Plastic	X	X				X	X X	
Heavy Duty Saw 15-085, 15-087	15" & 20"	9	Wood	X			X	X			
Fine Finish Saw 15-086, 15-088, 20-065	15", 20", & 26"	12	Wood	X	X				X	X X	
Heavy Duty Saw - Resharpenable 15-334, 15-335	15" & 20"	9	Wood	X			X	X			
General Purpose Saw 15-579, 15-580	15" & 20"	9	Plastic	X			X	X			
<b>SPECIALTY SAWS</b>											
Drywall Saw 15-025	15"	9	Wood	X			X	X			
Compact Fine Finish Saw 20-221	10"	12	Wood	X	X				X	X X	
Compass Saw 15-100	12"	8	Wood	X		X					
Compass Saw w/Plastic Handle 15-351	12"	8	Plastic	X		X					
Reversing Backsaw 15-252	10"	15	Wood	X						X	
Miter Box Saw 15-673	14"	12	Wood	X					X	X X	
Miter Box Saw w/Plastic Handle 15-509	12"	13	Plastic	X					X	X X	
MultiPurpose Saw - 3 in 1 20-092	6", 8", & 10"	10, 12, & 24	High Strength Nylon	X	X	X	X		X	X X	
MultiPurpose Saw - Nest of Saws 15-090	6", 8", & 10"	24, 10, & 12	Plastic	X	X	X	X		X	X X	
Folding Pocket Saw 15-333	8"	10	Plastic	X			X				
MultiPurpose Saw - 4-Way™ 15-275	6"	N/A	Metal	X	X	X	X			X	
Flush Cut Pull Saw 20-331	4-3/4"	23	Plastic	X		X				X	
<b>JAB SAWS</b>											
FatMax® Drywall Saw 20-556	6"	9	Rubber			X	X				
Drywall Saw w/Cushion Grip 15-556	6"	7	Plastic			X	X				
Drywall Saw 15-206	6"	7	Wood			X	X				
MultiPurpose Saw - Cushion Grip 20-220	N/A	N/A	Plastic	X	X						
<b>HACKSAWS</b>											
FatMax® High Tension Hacksaw 20-531	12"	24	Aluminum, Rubber		X						
High Tension Hacksaw 15-113	12"	24	Metal		X						
Low Profile-High Tension Hacksaw 20-001	12"	24	Aluminum		X						
High Tension Hacksaw 20-115	12"	24	Metal, Plastic		X						
Composite Hacksaw 15-892	12"	24	Plastic		X						
Rubber Grip Hacksaw 15-265	10"	24	Plastic		X						
Metal Fixed Frame Hacksaw 15-285	10"	24	Plastic		X						
Adjustable Length Hacksaw 15-565	10" / 12"	24	Plastic		X						
Metal Mini-Hack™ Utility Saw 15-809	10"	24	Plastic		X						
Mini-Hack™ Utility Saw 20-807	10"	24	Plastic		X						
<b>MITER BOX</b>											
Clamping Miter Box 20-112	N/A	N/A		X		X			X	X X	
Clamping Miter Box With Saw 20-600	14"	13	Plastic	X		X			X	X X	
Saw Storage Miter Box 19-212	N/A	N/A		X		X			X	X X	
Saw Storage Miter Box With Saw 19-800	14"	13	Plastic	X		X			X	X X	
Adjustable Angle Clamping Miter Box 20-800	22"	15	Plastic	X		X			X	X X	



# STANLEY INNOVATION ADVANTAGE — SharpTooth™ and BladeArmor™ Coating

The FatMax® Saw with BladeArmor™ Coating is one fast-cutting tool. Each tooth has three cutting surfaces instead of two to rip through wood or plastic 50% faster than other Stanley® saws. Protected with BladeArmor™ Coating, the saw blade resists both rust and abrasion and has a dramatic reduction in friction.



# SAWS



FatMax® Saw



Clamping Miter Box



FatMax® Drywall Saw

SAWS



### FatMax® Saw with BladeArmor™ Coating

- BladeArmor™ composite coating protects the blade with 2x more rust protection, 6x more abrasion protection, and 50% less friction (compared to Stanley® lacquered saws)
- Blade is 15% thicker than conventional saws for straighter cuts with less binding
- SharpTooth™ Saw Technology uses three cutting surfaces to cut 50% faster than conventional Stanley® hand saws
- Induction-hardened teeth stay sharp up to five times longer than standard teeth
- Back of saw can be used to mark 45° and 90° angles
- Thick, ergonomically designed grip resists slipping and adds comfort

Product SKU No.	Points Per Inch	Blade Length		Box/Ctn
		Inches	mm	
20-046	9	15	380	0 / 4
20-047	9	20	509	0 / 4



+15%\* THICKER BLADE

### FatMax® Saw

- Blade is 15% thicker than conventional saws for straighter cuts with less binding
- SharpTooth™ Saw Technology uses three cutting surfaces to cut 50% faster than conventional Stanley® Hand Saws
- Induction-hardened teeth stay sharp up to five times longer than standard teeth
- Back of saw can be used to mark 45° and 90° angles
- Thick, ergonomically designed grip resists slipping and adds comfort

Product SKU No.	Points Per Inch	Blade Length		Box/Ctn
		Inches	mm	
20-045	9	15	380	0 / 4

### Fine Finish Saw with Rubber Grip

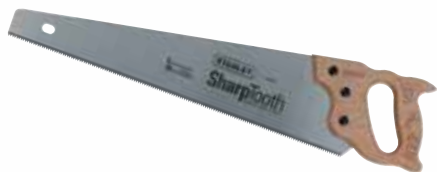
- SharpTooth™ Saw Technology uses three cutting surfaces to cut 50% faster than conventional Stanley® Hand Saws
- Induction-hardened teeth stay sharp up to five times longer than standard teeth
- Ergonomically designed handle for better grip and improved comfort
- Welded handle eliminates screws and won't loosen over time
- Reusable guard protects blade



Product SKU No.	Points Per Inch	Blade Length		Box/Ctn
		Inches	mm	
20-526	12	15	380	0 / 4
20-527	12	20	508	0 / 4

### Heavy Duty Saw

- Aggressive multi-purpose saw for fast cutting
- For use on MDF, plasterboard, and all wood types.
- SharpTooth™ Saw Technology uses three cutting surfaces to cut 50% faster than conventional Stanley® Hand Saws
- Induction hardened teeth stay sharp 3 to 5 times longer than standard teeth
- Back of saw can be used to mark 45° and 90° angles (15-085)
- Total length of 18" fits conveniently in most tool boxes (15-085)
- Hardwood handle



Product SKU No.	Points Per Inch	Blade Length		Box/Ctn
		Inches	mm	
15-085	9	15	380	0 / 4
15-087	9	20	508	0 / 2

## Fine Finish Saw

- Multi-purpose saw for a high quality finish
- For use on laminate, plastic pipe, and all wood types
- SharpTooth™ Saw Technology uses three cutting surfaces to cut 50% faster than conventional Stanley® Hand Saws
- Induction hardened teeth stay sharp 3 to 5 times longer than standard teeth
- Back of saw can be used to mark 45° and 90° angles (15-086)
- Total length of 18" fits conveniently in most tool boxes (15-088)
- Hardwood handle

Product SKU No.	Points Per Inch	Blade Length		Box/Ctn
		Inches	mm	
15-086	12	15	380	0 / 4
15-088	12	20	508	0 / 2
20-065	12	26	660	0 / 2



## Heavy Duty Saw - Resharpenable

- Aggressive three-sided tooth design cuts 50% faster than conventional hand saws
- Back of saw can be used to mark 45° and 90° angles
- Teeth can be resharpened
- Select hardwood handle provides comfort and control

Product SKU No.	Points Per Inch	Blade Length		Box/Ctn
		Inches	mm	
15-334	9	15	380	0 / 4
15-335	9	20	508	0 / 4



## General Purpose Saw

- Fast cuts on push and pull strokes
- Precision-ground, razor-sharp teeth
- Molded handle provides comfortable grip
- Back of saw can be used to mark 45° and 90° angles
- 15-inch length fits most toolboxes (15-579)

Product SKU No.	Points Per Inch	Blade Length		Box/Ctn
		Inches	mm	
15-579	9	15	380	0 / 4
15-580	9	20	508	0 / 2



## Drywall Saw

- SharpTooth™ Saw Technology uses three cutting surfaces to cut 50% faster than conventional Stanley® hand saws
- Induction-hardened teeth hold up against abrasive drywall materials
- Hardwood handle for durability and comfort

Product SKU No.	Points Per Inch	Blade Length		Box/Ctn
		Inches	mm	
15-025	9	15	380	0 / 2





### Compact Fine Finish Saw

- Multi-purpose Saw for a high quality finish
- For use on laminate, plastic pipe, and all wood types
- Induction hardened teeth stay sharp 3 to 5 times longer than standard teeth
- Aggressive 3-sided tooth design cuts wood 50% faster than conventional handsaws
- 10" blade is ideal for access in tight spaces
- Hardwood handle is contoured to fit the hand comfortably
- Compact 15-1/2" overall length fits conveniently in most tool boxes

Product SKU No.	Points Per Inch	Blade Length		Box/Ctn
		Inches	mm	
20-221	12	10	254	0 / 6



### Compass Saw

- Designed to cut curves in wood, plywood, or plasterboard
- High-grade, tempered steel blade
- Induction-hardened teeth stay sharp up to five times longer than standard teeth
- Teeth are precision-set and sharpened for fast, smooth cutting
- Hardwood handle is durable and comfortable

Product SKU No.	Points Per Inch	Blade Length		Box/Ctn
		Inches	mm	
15-100	8	12	305	0 / 6



### Compass Saw with Plastic Handle

- Contoured plastic handle for comfort
- Designed to cut curves in wood, plywood, or plasterboard
- Induction-hardened teeth stay sharp up to five times longer than standard teeth

Product SKU No.	Points Per Inch	Blade Length		Box/Ctn
		Inches	mm	
15-351	8	12	305	0 / 6



### FatMax® Drywall Saw

- SharpTooth™ Technology cuts on push and pull strokes and is up to 50% faster than traditional tooth designs
- Sharpened tip punches through drywall with ease
- Hardened, tempered blade for increased cutting life
- Excellent for wood, plastic, and drywall
- Slip-resistant handle is designed for strength and durability

Product SKU No.	Blade Length		Box/Ctn
	Inches	mm	
20-556	6	152	6 / 36



### Drywall Saw with Cushion Grip

- Ergonomically designed curved handle is cushioned for comfort
- Fully hardened, tempered blade is designed for long cutting life
- Teeth are engineered to cut fast and prevent clogging
- Sharp tip makes plunge cuts easy
- Blade is epoxy-bonded to handle for a secure fit and durability

Product SKU No.	Blade Length		Box/Ctn
	Inches	mm	
15-556	6	152	6 / 36

## Drywall Saw

- Designed especially for making cuts in plasterboard
- Self-starting point sharpened for plunge cuts
- Blade is epoxy-bonded and ferruled to the handle for a connection that is three times as durable as non epoxy bonded blades

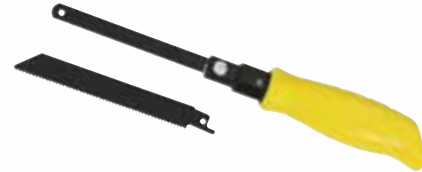
Product SKU No.	Blade Length		Box/Ctn
	Inches	mm	
15-206	6	152	6 / 6



## MultiPurpose Saw - Cushion Grip

- Ergonomically designed, curved handle is cushioned for comfort and prolonged use
- Works with standard reciprocating saw or hacksaw blades
- Ideal for sawing in tight spaces
- Large tension nut quickly and easily secures blade
- Comes with both wood cutting and metal cutting blades for versatility

Product SKU No.	Box/Ctn
20-220	6 / 36



## Flush Cut Pull Saw

- Flexible blade cuts plugs or dowels flush
- 23-point blade cuts quickly and cleanly on the pull stroke
- Double sided blade for convenient cutting to the left or right
- Contoured handle is comfortable, provides maximum control
- Excellent for trimming through tenons or lap joints

Product SKU No.	Points Per Inch	Blade Length		Box/Ctn
		Inches	mm	
20-331	23	4-3/4	119	6 / 36



## FatMax® High-Tension Hacksaw

- Durable, one-piece body is designed for ultra-high tension of 330 lb. (150kg)
- Pre-tensioning mechanism holds blade in place for quick and easy blade changes
- Thumb-dial adjustable tension mechanism allows for tension memory
- Power load sliding tension delivers added leverage when increasing tension and control when releasing blade
- Contoured handle and front thumb grip are ergonomically designed for control
- Comes with 24 TPI bi-metal blade
- Large cutting capacity – up to 4-3/4" throat depth for extra deep cutting

Product SKU No.	Depth of Throat		Blade Length		Box/Ctn
	Inches	mm	Inches	mm	
20-531	5	125	12	305	2 / 4

**STANLEY**  
**FatMax®**



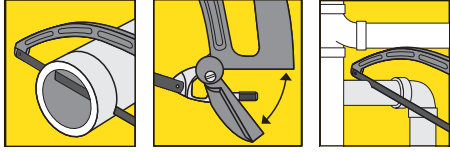
## High-Tension Hacksaw

- Rugged design for heavy duty use
- Fully adjustable tension holds blade up to 32,000 psi – delivers fast, accurate cuts and longer blade life
- Blade storage is integrated into frame
- Quick-release, blade-changing mechanism in handle, maintains tension setting
- Tension guide on handle lever

Product SKU No.	Depth of Throat		Blade Length		Box/Ctn
	Inches	mm	Inches	mm	
15-113	3-7/8	98	12	305	2 / 12







## Low Profile-High Tension Hacksaw

- Unique arc-shaped frame enables cutting in hard-to-reach areas
- 4" throat depth cuts large PVC pipes
- Heavy duty, lightweight, die-cast aluminum I-beam frame provides strength and durability
- 45° and 90° cutting angles add flexibility
- High-tension knob makes blade tension adjustment easy
- Ergonomically designed handle for comfortable use
- Patented design

Product SKU No.	Depth of Throat		Blade Length		Box/Ctn
	Inches	mm	Inches	mm	
20-001	4	100	12	30	0 / 4

## High Tension Hacksaw

- Single action blade tensioning device is easy to use, retains tension memory and can be adjusted to apply varying pressure to the blade
- Unique, quick-release lever allows for fast blade changes in less than 15 seconds
- Rigid metal internal I-beam construction adds stability and strength
- Molded bi-material, impact-resistant composite frame absorbs more shock
- Large cutting capacity for up to 5 inches of extra deep cutting
- Ergonomically designed contoured handle and front thumb grip to give better control
- Heavy duty steel reinforced core increases cutting speed
- 45° and 90° cutting angles for added flexibility of cutting needs



Product SKU No.	Depth of Throat		Blade Length		Box/Ctn
	Inches	mm	Inches	mm	
20-115	4	100	12	305	0 / 2

## Composite Hacksaw

- Patented design with I-beam frame construction
- 12" fixed blade frame is made of high-impact polymer with a steel core
- Sloped nose for access into hard-to-reach places
- Easy-open lever for quick blade change
- High-tension blade for straight accurate cuts
- 4" cutting depth
- Ergonomically designed, slip-resistant grip



Product SKU No.	Depth of Throat		Blade Length		Box/Ctn
	Inches	mm	Inches	mm	
15-892	4	100	12	305	0 / 24

## Rubber Grip Hacksaw

- Rigid steel frame with molded cushion grip
- D-shape guard protects hands and knuckles
- Adjustable frame



Product SKU No.	Depth of Throat		Blade Length		Box/Ctn
	Inches	mm	Inches	mm	
15-265	3-7/8	98	10	254	0 / 6

## Metal Fixed Frame Hacksaw

- This Fixed Frame Hacksaw has a 10" blade length
- Sturdy all-metal frame
- 24 teeth per inch
- Easy blade loading
- Full grip protects knuckles



Product SKU No.	Depth of Throat		Blade Length		Box/Ctn
	Inches	mm	Inches	mm	
15-285	4	100	10	254	0 / 6

## Adjustable Length Hacksaw

- Rugged plated steel frame
- Fits 10" and 12" blades
- Comfort pistol-grip handle

Product SKU No.	Depth of Throat		Blade Length		Box/Ctn
	Inches	mm	Inches	mm	
15-565	2-3/4	70	10	254	0 / 6



## Metal Mini-Hack™ Utility Saw

- Cast aluminum handle is lightweight, comfortable and durable
- Handle covers blade to protect user's hands
- Comes with high-performance, 10" bi-metal blade

Product SKU No.	Blade Length		Box/Ctn
	Inches	mm	
15-809	10	254	6 / 36



## Mini-Hack™ Utility Saw

- Ergonomically designed grip with thumb rest for maximum comfort
- Handle covers blade to protect user's hands
- High-impact polymer coating increases strength and durability
- 45% more cutting depth compared to standard mini hacksaws
- Comes with a 10" carbon steel blade
- For light duty use

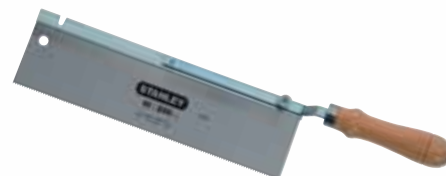
Product SKU No.	Blade Length		Box/Ctn
	Inches	mm	
20-807	10	254	6 / 36



## Dovetail Saw with Reversible Handle

- 3" wide blade for fine woodworking
- Offset handle for flush cutting
- Handle reverses for right or left-hand cutting
- Stiff steel back prevents bowing for true cuts

Product SKU No.	Points Per Inch	Blade Length		Box/Ctn
		Inches	mm	
15-252	15	10	254	2 / 2



## Miter Box Saw

- Aggressive three-sided tooth design cuts wood 50% faster than conventional handsaws.
- Induction hardened teeth stay sharp up to five times longer than standard teeth
- Hardwood handle for durability
- Fits all Stanley® Miter Boxes
- Stiff steel back prevents bowing for true cuts

Product SKU No.	Points Per Inch	Width Under Back		Blade Length		Box/Ctn
		Inches	mm	Inches	mm	
15-673	12	3-5/16	84	14	355	0 / 2







### Miter Box Saw with Plastic Handle

- Hardened, tempered steel for durability
- Contoured, molded handle provides comfort and control
- Fits all Stanley® Miter Boxes
- Stiff steel back prevents bowing for true cuts

Product SKU No.	Points Per Inch	Width Under Back		Blade Length		Box/Ctn
		Inches	mm	Inches	mm	
15-509	13	3-3/16	81	12	355	0 / 6



### MultiPurpose Saw - 3 in 1

- Ergonomically designed handle made with glass filled, high strength nylon to support six different blade positions
- Diamond pattern and rubber over-molding on the handle allows end users to use the saw with reduced slip grip
- No tools required for blade change
- Integrated blade storage. The turn knob allows the user to conveniently store all three blades on the handle when not in use
- Multiple position handle allows access to tight corners
- 10" Universal blade cuts on the pull stroke and is less likely to jam or bend
- 10" Universal blade cuts through tree limbs, 2 x 4's and plastic pipes
- 8" Compass saw blade carves patterns and shapes out of wood
- 6" Metal cutting blade cuts through metal pipes and metal rods

Product SKU No.	Number of Blades	Size	Box/Ctn
20-092	3	6", 8" & 10"	2 / 8



### MultiPurpose Saw - Nest of Saws

- Three interchangeable blades fit in a comfortable molded handle
- Blades include: aggressive 12 pt., 10" multi-purpose blade for tight spaces; a 10 pt., 10" non-hardened keyhole saw for wood applications and a 6", 24 tooth-per-inch blade for cutting metal
- Perfect for curves, circles, and trim work

Product SKU No.	Number of Blades	Box/Ctn
15-090	3	0 / 6



### Folding Pocket Saw

- This aggressive tooth Folding Pocket Saw measures 8" long when closed
- Folds like a jack knife for safe, easy storage
- Accepts standard saw and reciprocating blades
- Blade storage in handle

Product SKU No.	Points Per Inch	Blade Length		Box/Ctn
		Inches	mm	
15-333	10	8	203	0 / 6



### MultiPurpose Saw - 4-Way™ Keyhole Saw

- 4-way™ blade positioning cuts curves, circles, and frets into places where ordinary hacksaws cannot reach
- Cuts wood, nails, metal lath, composition board, BX cable, conduit, and more
- Lightweight, pistol grip handle
- Comes with one wood-cutting blade and one metal-cutting blade

Product SKU No.	Box/Ctn
15-275	0 / 6

## Clamping Miter Box

- Holds material securely for accurate cuts
- Material secures to the base with a twist of the cam pins
- Cuts miters on 45° and 90°, face angle 45°, and 22-1/2° (octagonal)
- Molded-in storage compartments hold cam pins and pencil
- All pieces molded of high-impact-resistant material
- Molded lip on base edge for easy use without mounting
- Built-in saw stop prevents cutting into Miter box
- Holes in base for fastening to workbench
- Patented design



Product SKU No.	Back Saw		Box/Ctn
	Inches	mm	
20-112	—	—	0 / 6
20-600 <i>With Saw</i>	14	356	0 / 6

## Saw Storage Miter Box

- New storage system, holds all 12" x 14" Stanley® backsaws
- Finger button allows easy release of saw from storage cavity
- 90°, 45°, and 22-1/2° Miter slots
- Holes in base for fastening to a workbench
- Made from lightweight, high-impact ABS plastic
- Open interior allows cuttings to fall through
- Can be used with either back or panel saws
- Integrated pencil pocket
- Patent pending



Product SKU No.	Back Saw		Box/Ctn
	Inches	mm	
19-212	—	—	0 / 6
19-800 <i>With Saw</i>	14	356	0 / 6

## Adjustable Angle Clamping Miter Box

- Ergonomically designed, slip-resistant grip for maximum comfort and control
- Induction-hardened teeth stay sharp up to five times longer than other leading back saws
- Simple angle adjustment for most applications
- Quick cam clamp holds work for accuracy
- Precision design for smooth, accurate cuts in wood
- Patent design



Product SKU No.	Handle		Box/Ctn
	Inches	mm	
20-800	22	560	0 / 2

## Coping Saw

- Finest pro quality
- Rich hardwood handle
- Blade made of highest-grade high-carbon steel
- Hardened, tempered blade provides clean, controllable cutting action

Product SKU No.	Length		Frame Depth		Box/Ctn
	Inches	mm	Inches	mm	
15-104	6-3/8	160	4-3/4	120	0 / 6
15-106	6-3/8	160	6-3/4	170	0 / 6
15-106A <i>Carded With 3 Blades</i>	6-3/8	160	6-3/4	170	0 / 6





## Coping Saw Blades

- Formerly known as Trojan® Blades
- Strong, flexible, and long lasting
- Extra narrow blade for sharp surrounding cuts (15-057)

Product SKU No.	Size Per Pitch	Box/Ctn
15-057*	6-1/2" x 20 TPI	10 / 50
15-058	6-1/2" x 10 TPI	10 / 50
15-059	6-1/2" x 20 TPI	10 / 50
15-061	6-1/2" x 15 TPI	10 / 50



## Bi-Metal Hacksaw Blades 15-600 Series

- Uncompromised performance
- Combines the flexibility of carbon steel backs with the cutting performance of high-speed steel cutting edge
- Cuts most metals including unhardened tool steel and stainless steel

Product SKU No.	Blade Per Card	Size Per Pitch	Blade Length		Box/Ctn
			Inches	mm	
15-629	1	10" x 18 TPI	10	254	10 / 100
15-628	1	10" x 24 TPI	10	254	10 / 100
15-627	1	10" x 32 TPI	10	254	10 / 100
15-632	1	12" x 18 TPI	12	305	10 / 100
15-631	1	12" x 24 TPI	12	305	10 / 100
15-630	1	12" x 32 TPI	12	305	10 / 100
15-612	10	12" x 18 TPI	12	305	5 / 50
15-613	10	12" x 24 TPI	12	305	5 / 50
15-614	10	12" x 32 TPI	12	305	5 / 50



## Bi-Metal Hacksaw Blade Multipack

- High-speed steel cutting edge
- Cuts most metals including unhardened tool steel and stainless steel

Product SKU No.	Blade Per Card	Size Per Pitch	Blade Length		Box/Ctn
			Inches	mm	
20-027 4pk Blades	1	12" x 18 TPI	12	305	5 / 30
	2	12" x 24 TPI	12	305	
	1	12" x 32 TPI	12	305	



## Carbide Grit Blades, Hacksaw Blades

- Tungsten carbide particles enable blade to cut on both forward and reverse strokes
- Makes thin straight cuts in ceramic, hardened steel, cast iron and masonry
- Fits standard hacksaw frame

Product SKU No.	Back Saw		Box/Ctn
	Inches	mm	
15-412 Hacksaw Blade	12	305	10 / 100
15-410 Rod Saw	10	254	10 / 100

\*Extra narrow blade for sharp surrounding cuts.

## MaxSteel™ Aviation Snips

- Exceeds ANSI standards for cutting performance and durability
- Serrated cutting edges prevent materials from slipping during use
- Double overwind spring for longer life
- High-leverage, compound cutting design cuts up to 18-gauge steel
- Slip-resistant, bi-material cushion grip
- Latch automatically releases with the squeeze of the handles
- Chrome-plated hardware
- Excellent for cutting aluminum, vinyl siding, screening, cardboard, leather and copper

Product SKU No.	Contains	Box/Ctn
14-562 <i>Left Curve</i>		6 / 24
14-563 <i>Straight</i>		6 / 24
14-564 <i>Right Curve</i>		6 / 24
14-566 <i>Long Cut Straight</i>		6 / 24
14-567 <i>Offset Left Curve</i>		6 / 24
14-568 <i>Offset Right Curve</i>		6 / 24
14-559 <i>3pc Snip Set</i>	14-562 14-563 14-564	0 / 4



## MaxSteel™ All-Purpose Snips Straight Pattern

- Exceeds ANSI standards for cutting performance and durability
- Slip-resistant comfort grip

Product SKU No.	O/A Length		Box/Ctn
	Inches	mm	
14-569	7	180	6 / 24
14-556	10	254	6 / 24
14-558	12	305	6 / 24

