

CoroCut[®] QI



CoroCut® QI**Inserts**

CoroCut® QI insert for grooving	2-4
CoroCut® QI insert for profiling	5

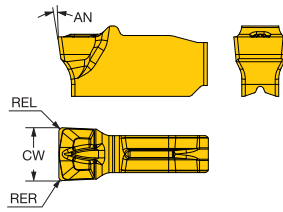
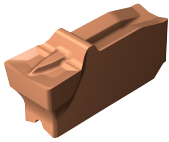
External tools

CoroCut® QI shank tool for face grooving	6-7
CoroCut® QI head for grooving	8
CoroCut® QI head for face grooving	9-10

Internal tools

CoroCut® QI boring bar for face grooving	11-12
CoroCut® QI boring bar for grooving	13-14

CoroCut® QI insert for grooving



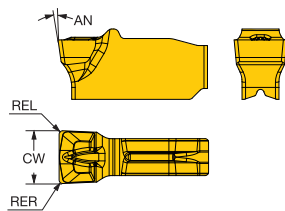
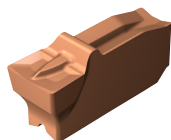
	SSC	CW	REL	RER	Ordering code	Dimensions, mm, inch																						
						P			M			K		N		S			AN	CWTOLL	CWTOLU	RETOLL	RETOLU					
						1125	1145	1105	1125	1145	H13A	1125	H13A	1105	1125	H13A	1105	1145	H13A	8°								
Finishing	E	2.00	0.20	0.20	QI-NE-0200-0002-GF	★	☆	☆	★	☆	☆	★	☆	☆	★	☆	☆	★	☆	☆	★	☆	☆	8°	-0.020	0.020	-0.050	0.050
		.079	.008	.008																					-.0008	.0008	-.0020	.0020
		2.39	0.20	0.20	QI-NE-0239-0002-GF	★	☆	☆	★	☆	☆	★	☆	☆	★	☆	☆	★	☆	☆	★	☆	☆	8°	-0.020	0.020	-0.050	0.050
		.094	.008	.008																					-.0008	.0008	-.0020	.0020
	F	2.46	0.20	0.20	QI-NF-0246-0002-GF	★	☆	☆	★	☆	☆	★	☆	☆	★	☆	☆	★	☆	☆	★	☆	☆	8°	-0.020	0.020	-0.050	0.050
		.097	.008	.008																					-.0008	.0008	-.0020	.0020
		2.67	0.20	0.20	QI-NF-0267-0002-GF	★	☆	☆	★	☆	☆	★	☆	☆	★	☆	☆	★	☆	☆	★	☆	☆	8°	-0.020	0.020	-0.050	0.050
		.105	.008	.008																					-.0008	.0008	-.0020	.0020
		2.79	0.20	0.20	QI-NF-0279-0002-GF	★			★			★			★			★			★			8°	-0.020	0.020	-0.050	0.050
		.110	.008	.008																					-.0008	.0008	-.0020	.0020
		3.00	0.20	0.20	QI-NG-0300-0002-GF	★	☆	☆	★	☆	☆	★	☆	☆	★	☆	☆	★	☆	☆	★	☆	☆	8°	-0.020	0.020	-0.050	0.050
		.118	.008	.008																					-.0008	.0008	-.0020	.0020
		3.18	0.20	0.20	QI-NG-0318-0002-GF	★	☆	☆	★	☆	☆	★	☆	☆	★	☆	☆	★	☆	☆	★	☆	☆	8°	-0.020	0.020	-0.050	0.050
		.125	.008	.008																					-.0008	.0008	-.0020	.0020
		3.61	0.20	0.20	QI-NG-0361-0002-GF	★			★			★			★			★			★			8°	-0.020	0.020	-0.050	0.050
	.142	.008	.008																					-.0008	.0008	-.0020	.0020	

SSC = To correspond with SSC on holder.

N = Neutral

CoroCut® QI insert for grooving

For circlip grooves

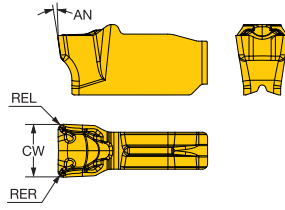
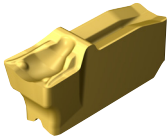


						Dimensions, mm, inch																		
		Ordering code				P		M		K		N		S										
		SSC	CW	REL	RER	1125	1145	1125	1145	1125	113A	1125	113A	1125	1145	113A	AN	CWTOLL	CWTOLU	RETOLL	RETOLU			
Finishing		E	1.85	0.10	0.10	★		★				★	★	★			8°	0.090	0.130	-0.050	0.050			
			.073	.004	.004														.0035	.0051	-.0020	.0020		
			2.15	0.20	0.20		★		★				★	★	★			8°	0.090	0.130	-0.050	0.050		
		F	.085	.008	.008	QI-NE-0215-0002-GF	★		★				★	★	★			8°	0.090	0.130	-0.050	0.050		
						QI-NF-0265-0002-GF	★	☆	★	☆	★	☆	★	☆	★	☆	★	☆	☆	8°	0.090	0.130	-0.050	0.050
						QI-NG-0315-0002-GF	★		★		★		★		★		★			8°	0.090	0.130	-0.050	0.050
		G	.104	.008	.008	QI-NE-0215-0002-GF	★		★				★	★	★			8°	0.090	0.130	-0.050	0.050		
						QI-NF-0265-0002-GF	★	☆	★	☆	★	☆	★	☆	★	☆	★	☆	8°	0.090	0.130	-0.050	0.050	
						QI-NG-0315-0002-GF	★		★		★		★		★		★		8°	0.090	0.130	-0.050	0.050	
		.124	.008	.008													.0035	.0051	-.0020	.0020				

SSC = To correspond with SSC on holder.

N = Neutral

CoroCut® QI insert for grooving

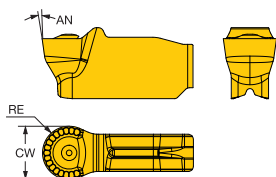
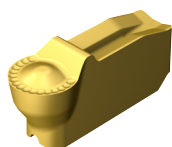


	SSC	CW	REL	RER	Ordering code	Dimensions, mm, inch																						
						P			M			K		N		S			AN	CWTOLL	CWTOLU	RETOLL	RETOLU					
						1125	1135	1145	1105	1125	1135	1145	1125	1135	1105	1125	1105	1125	1135	1145								
Finishing 	G	3.00	0.30	0.30	QI-NG-0300-0003-TF	★	☆	☆	☆	☆	★	☆	☆	★	☆	☆	★	☆	☆	★	☆	☆	8°	-0.050	0.050	-0.050	0.050	
		.118	.012	.012																				-.0020	.0020	-.0020	.0020	
	H	4.00	0.30	0.30	QI-NH-0400-0003-TF	★	☆	☆	☆	☆	★	☆	☆	★	☆	☆	★	☆	☆	★	☆	☆	8°	-0.050	0.050	-0.050	0.050	
		.157	.012	.012																					-.0020	.0020	-.0020	.0020
	J	5.00	0.40	0.40	QI-NJ-0500-0004-TF	★	☆	☆	☆	☆	★	☆	☆	★	☆	☆	★	☆	☆	★	☆	☆	8°	-0.050	0.050	-0.050	0.050	
		.197	.016	.016																					-.0020	.0020	-.0020	.0020
	K	6.00	0.40	0.40	QI-NK-0600-0004-TF	★	☆	☆	☆	☆	★	☆	☆	★	☆	☆	★	☆	☆	★	☆	☆	8°	-0.050	0.050	-0.050	0.050	
		.236	.016	.016																					-.0020	.0020	-.0020	.0020

SSC = To correspond with SSC on holder.

N = Neutral

CoroCut® QI insert for profiling



					P					M			K		N		S		Dimensions, mm, inch						
		SSC	CW	RE	Ordering code															AN	CWTOLL	CWTOLU			
Medium		G	3.00	1.50	QI-NG-0300-RM	★	☆	☆	☆	★	★	★	★	★	★	★	★	★	★	★	8°	-0.050	0.050		
			.118	.059																			-.0020	.0020	
		H	4.00	2.00	QI-NH-0400-RM	★	☆	☆	☆	★	★	★	★	★	★	★	★	★	★	★	★	8°	-0.050	0.050	
			.157	.079																				-.0020	.0020
		J	5.00	2.50	QI-NJ-0500-RM	★	☆	☆	☆	★	★	★	★	★	★	★	★	★	★	★	★	★	8°	-0.050	0.050
	.197	.098																					-.0020	.0020	
	K	6.00	3.00	QI-NK-0600-RM	★	☆	☆	☆	★	★	★	★	★	★	★	★	★	★	★	★	★	8°	-0.050	0.050	
		.236	.118																				-.0020	.0020	

SSC = To correspond with SSC on holder.

N = Neutral

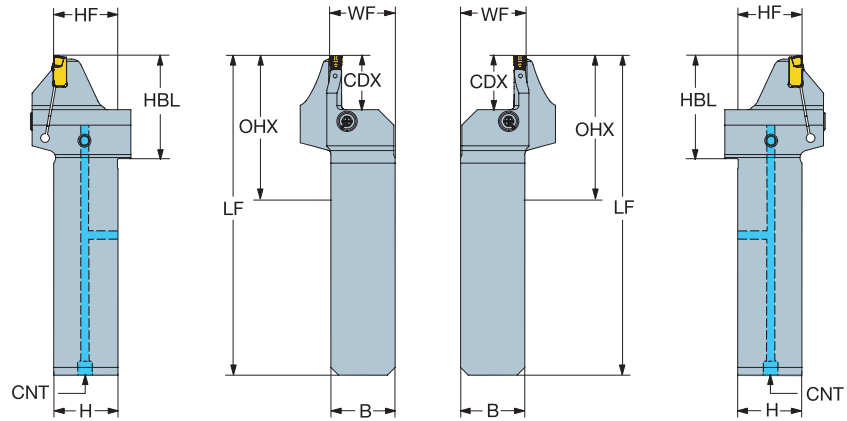
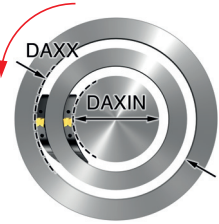
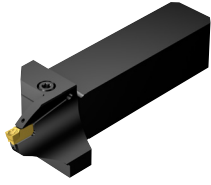
CoroCut® QI QS shank tool for face grooving

Screw clamp design

Precision coolant supply

TSYC QS-QI-RF.C..B

QS-QI-LF.C..B



Metric version

SSC	CZC _{MS}	CDX	DAXIN	DAXX	OHX	CNSC	Ordering code	Dimensions, mm							BAR	NM	KG	MIID	
								B	H	HBL	LF	WF	HF	CNT					
G	25 x 25	15.0	16.0	30.0	60.0	3	QS-QI-LFG15C2525-016B	25.0	25.0	35.0	119.0	25.5	25.0	G 1/8-28	150	2.5	0.50	QI-NG-0300-0003-TF	
	25 x 25	15.0	24.0	40.0	60.0	3	QS-QI-LFG15C2525-024B	25.0	25.0	35.0	119.0	25.5	25.0	G 1/8-28	150	2.5	0.50	QI-NG-0300-0003-TF	
	H	25 x 25	20.0	16.0	32.0	65.0	3	QS-QI-LFH20C2525-016B	25.0	25.0	40.0	124.0	25.5	25.0	G 1/8-28	150	2.5	0.51	QI-NH-0400-0003-TF
		25 x 25	20.0	24.0	44.0	65.0	3	QS-QI-LFH20C2525-024B	25.0	25.0	40.0	124.0	25.5	25.0	G 1/8-28	150	2.5	0.51	QI-NH-0400-0003-TF
	J	25 x 25	20.0	23.0	45.0	65.0	3	QS-QI-LFJ20C2525-023B	25.0	25.0	40.0	124.0	25.5	25.0	G 1/8-28	150	2.5	0.52	QI-NJ-0500-0004-TF
K	25 x 25	20.0	30.0	50.0	65.0	3	QS-QI-LFJ20C2525-030B	25.0	25.0	40.0	124.0	25.5	25.0	G 1/8-28	150	2.5	0.52	QI-NJ-0500-0004-TF	
	25 x 25	20.0	23.0	45.0	65.0	3	QS-QI-LFK20C2525-023B	25.0	25.0	40.0	124.0	25.5	25.0	G 1/8-28	150	2.5	0.53	QI-NK-0600-0004-TF	
G	25 x 25	15.0	16.0	30.0	60.0	3	QS-QI-RFG15C2525-016B	25.0	25.0	35.0	119.0	25.5	25.0	G 1/8-28	150	2.5	0.50	QI-NG-0300-0003-TF	
	25 x 25	15.0	24.0	40.0	60.0	3	QS-QI-RFG15C2525-024B	25.0	25.0	35.0	119.0	25.5	25.0	G 1/8-28	150	2.5	0.50	QI-NG-0300-0003-TF	
	H	25 x 25	20.0	16.0	32.0	65.0	3	QS-QI-RFH20C2525-016B	25.0	25.0	40.0	124.0	25.5	25.0	G 1/8-28	150	2.5	0.51	QI-NH-0400-0003-TF
		25 x 25	20.0	24.0	44.0	65.0	3	QS-QI-RFH20C2525-024B	25.0	25.0	40.0	124.0	25.5	25.0	G 1/8-28	150	2.5	0.51	QI-NH-0400-0003-TF
	J	25 x 25	20.0	23.0	45.0	65.0	3	QS-QI-RFJ20C2525-023B	25.0	25.0	40.0	124.0	25.5	25.0	G 1/8-28	150	2.5	0.52	QI-NJ-0500-0004-TF
K	25 x 25	20.0	30.0	50.0	65.0	3	QS-QI-RFJ20C2525-030B	25.0	25.0	40.0	124.0	25.5	25.0	G 1/8-28	150	2.5	0.52	QI-NJ-0500-0004-TF	
	25 x 25	20.0	23.0	45.0	65.0	3	QS-QI-RFK20C2525-023B	25.0	25.0	40.0	124.0	25.5	25.0	G 1/8-28	150	2.5	0.53	QI-NK-0600-0004-TF	

Inch version

SSC	CZC _{MS}	CDX	DAXIN	DAXX	OHX	CNSC	Ordering code	Dimensions, inch							PSI	FT/LBS	LBS	MIID
								B	H	HBL	LF	WF	HF	CNT				
G	1 x 1	.591	.630	1.181	2.362	3	QS-QI-LFG15C16-016B	1.000	1.000	1.378	4.685	1.020	1.000	G 1/8-28	2175	1.8	1.142	QI-NG-0300-0003-TF
	1 x 1	.591	.945	1.575	2.362	3	QS-QI-LFG15C16-024B	1.000	1.000	1.378	4.685	1.020	1.000	G 1/8-28	2175	1.8	1.146	QI-NG-0300-0003-TF
H	1 x 1	.787	.630	1.260	2.559	3	QS-QI-LFH20C16-016B	1.000	1.000	1.575	4.882	1.020	1.000	G 1/8-28	2175	1.8	1.166	QI-NH-0400-0003-TF
	1 x 1	.787	.945	1.732	2.559	3	QS-QI-LFH20C16-024B	1.000	1.000	1.575	4.882	1.020	1.000	G 1/8-28	2175	1.8	1.160	QI-NH-0400-0003-TF
K	1 x 1	.787	.906	1.772	2.559	3	QS-QI-LFK20C16-023B	1.000	1.000	1.575	4.882	1.020	1.000	G 1/8-28	2175	1.8	1.197	QI-NK-0600-0004-TF
G	1 x 1	.591	.630	1.181	2.362	3	QS-QI-RFG15C16-016B	1.000	1.000	1.378	4.685	1.020	1.000	G 1/8-28	2175	1.8	1.142	QI-NG-0300-0003-TF
	1 x 1	.591	.945	1.575	2.362	3	QS-QI-RFG15C16-024B	1.000	1.000	1.378	4.685	1.020	1.000	G 1/8-28	2175	1.8	1.146	QI-NG-0300-0003-TF
H	1 x 1	.787	.630	1.260	2.559	3	QS-QI-RFH20C16-016B	1.000	1.000	1.575	4.882	1.020	1.000	G 1/8-28	2175	1.8	1.166	QI-NH-0400-0003-TF
	1 x 1	.787	.945	1.732	2.559	3	QS-QI-RFH20C16-024B	1.000	1.000	1.575	4.882	1.020	1.000	G 1/8-28	2175	1.8	1.160	QI-NH-0400-0003-TF
K	1 x 1	.787	.906	1.772	2.559	3	QS-QI-RFK20C16-023B	1.000	1.000	1.575	4.882	1.020	1.000	G 1/8-28	2175	1.8	1.197	QI-NK-0600-0004-TF

SSC = To correspond with SSC on insert.

R = Right hand, L = Left hand

For complete list of spare parts, see www.sandvik.coromant.com

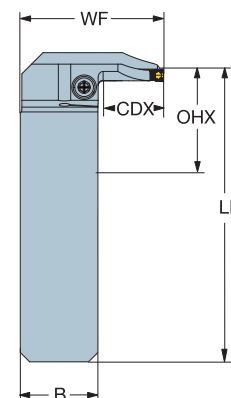
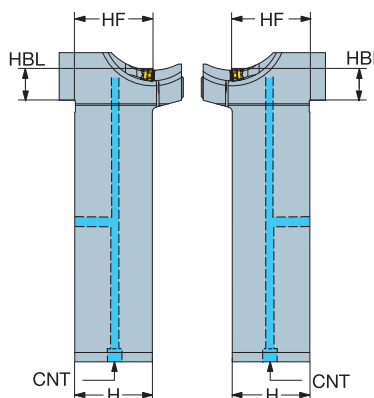
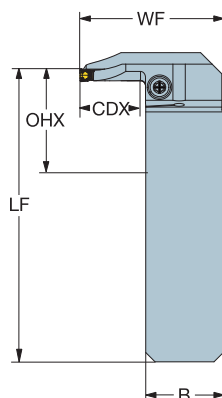
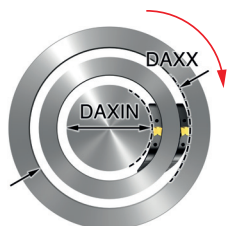
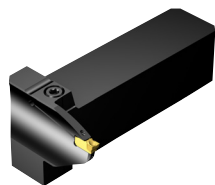
CoroCut® QI QS shank tool for face grooving

Screw clamp design

Precision coolant supply

TSYC QS-QI-RG..C..B

QS-QI-LG..C..B



Metric version

								Dimensions, mm													
SSC	CZC _{MS}	CDX	DAXIN	DAXX	OHX	CNSC	Ordering code	B	H	HBL	LF	WF	HF	CNT	BAR	NM	KG	MIID			
G	25 x 25	15.0	16.0	30.0	35.0	3	QS-QI-LGG15C2525-016B	25.0	25.0	10.0	94.0	41.0	25.0	G 1/8-28	150	2.5	0.45	QI-NG-0300-0003-TF			
	25 x 25	15.0	16.0	30.0	35.0	3	QS-QI-LGG15C2525-024B	25.0	25.0	10.0	94.0	41.0	25.0	G 1/8-28	150	2.5	0.45	QI-NG-0300-0003-TF			
	25 x 25	20.0	24.0	40.0	35.0	3	QS-QI-LGH20C2525-016B	25.0	25.0	10.0	94.0	46.0	25.0	G 1/8-28	150	2.5	0.47	QI-NH-0400-0003-TF			
	25 x 25	20.0	24.0	44.0	35.0	3	QS-QI-LGH20C2525-024B	25.0	25.0	10.0	94.0	46.0	25.0	G 1/8-28	150	2.5	0.46	QI-NH-0400-0003-TF			
H	25 x 25	20.0	23.0	45.0	35.0	3	QS-QI-LGK20C2525-023B	25.0	25.0	10.0	94.0	46.0	25.0	G 1/8-28	150	2.5	0.48	QI-NK-0600-0004-TF			
	25 x 25	15.0	16.0	30.0	35.0	3	QS-QI-RGG15C2525-016B	25.0	25.0	10.0	94.0	41.0	25.0	G 1/8-28	150	2.5	0.45	QI-NG-0300-0003-TF			
	25 x 25	15.0	16.0	30.0	35.0	3	QS-QI-RGG15C2525-024B	25.0	25.0	10.0	94.0	41.0	25.0	G 1/8-28	150	2.5	0.45	QI-NG-0300-0003-TF			
	25 x 25	20.0	16.0	32.0	35.0	3	QS-QI-RGH20C2525-016B	25.0	25.0	10.0	94.0	46.0	25.0	G 1/8-28	150	2.5	0.47	QI-NH-0400-0003-TF			
K	25 x 25	20.0	24.0	44.0	35.0	3	QS-QI-RGH20C2525-024B	25.0	25.0	10.0	94.0	46.0	25.0	G 1/8-28	150	2.5	0.46	QI-NH-0400-0003-TF			
	25 x 25	20.0	23.0	45.0	35.0	3	QS-QI-RGK20C2525-023B	25.0	25.0	10.0	94.0	46.0	25.0	G 1/8-28	150	2.5	0.48	QI-NK-0600-0004-TF			

Inch version

								Dimensions, inch													
SSC	CZC _{MS}	CDX	DAXIN	DAXX	OHX	CNSC	Ordering code	B	H	HBL	LF	WF	HF	CNT	PSI	FTZ LBS	LBS	MIID			
G	1 x 1	.591	.630	1.181	1.378	3	QS-QI-LGG15C16-016B	1.000	1.000	.394	3.701	1.630	1.000	G 1/8-28	2175	1.8	1.129	QI-NG-0300-0003-TF			
	1 x 1	.591	.945	1.575	1.378	3	QS-QI-LGG15C16-024B	1.000	1.000	.394	3.701	1.630	1.000	G 1/8-28	2175	1.8	1.034	QI-NG-0300-0003-TF			
	1 x 1	.787	.630	1.260	1.378	3	QS-QI-LGH20C16-016B	1.000	1.000	.394	3.701	1.827	1.000	G 1/8-28	2175	1.8	1.063	QI-NH-0400-0003-TF			
	1 x 1	.787	.945	1.732	1.378	3	QS-QI-LGH20C16-024B	1.000	1.000	.394	3.701	1.827	1.000	G 1/8-28	2175	1.8	1.058	QI-NH-0400-0003-TF			
H	1 x 1	.787	.906	1.772	1.378	3	QS-QI-LGK20C16-023B	1.000	1.000	.394	3.701	1.827	1.000	G 1/8-28	2175	1.8	1.096	QI-NK-0600-0004-TF			
	1 x 1	.591	.630	1.181	1.378	3	QS-QI-RGG15C16-016B	1.000	1.000	.394	3.701	1.630	1.000	G 1/8-28	2175	1.8	1.032	QI-NG-0300-0003-TF			
	1 x 1	.591	.945	1.575	1.378	3	QS-QI-RGG15C16-024B	1.000	1.000	.394	3.701	1.630	1.000	G 1/8-28	2175	1.8	1.034	QI-NG-0300-0003-TF			
	1 x 1	.787	.630	1.260	1.378	3	QS-QI-RGH20C16-016B	1.000	1.000	.394	3.701	1.827	1.000	G 1/8-28	2175	1.8	1.063	QI-NH-0400-0003-TF			
K	1 x 1	.787	.945	1.732	1.378	3	QS-QI-RGH20C16-024B	1.000	1.000	.394	3.701	1.827	1.000	G 1/8-28	2175	1.8	1.058	QI-NH-0400-0003-TF			
	1 x 1	.787	.906	1.772	1.378	3	QS-QI-RGK20C16-023B	1.000	1.000	.394	3.701	1.827	1.000	G 1/8-28	2175	1.8	1.096	QI-NK-0600-0004-TF			

SSC = To correspond with SSC on insert.

R = Right hand, L = Left hand

For complete list of spare parts, see www.sandvik.coromant.com

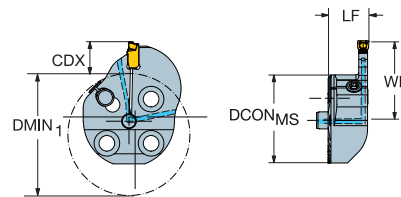
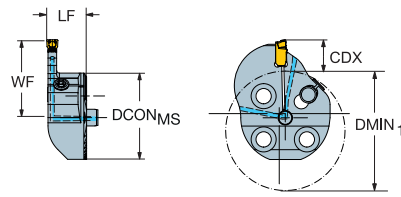
CoroCut® QI head for grooving

Screw clamp design

CoroTurn® SL - Precision coolant supply

TSYC SL-QI-L..C

SL-QI-R..C



SSC	CZC _{MS}	CDX	DMIN ₁	CNSC	Ordering code	Dimensions, mm						MIID
						DCON _{MS}	LF	WF	BAR	NM	KG	
E	25	8.0	36.0	1	SL-QI-LE08C25-36	25	14.0	22.3	150	3.0	0.03	QI-NE-0200-0002-GF
	32	8.0	43.0	1	SL-QI-LE08C32-43	32	14.0	25.0	150	3.0	0.06	QI-NE-0200-0002-GF
F	25	8.0	40.0	1	SL-QI-LF08C25-40	25	14.0	22.3	150	3.0	0.03	QI-NF-0246-0002-GF
	32	7.0	42.0	1	SL-QI-LF07C32-42	32	14.0	24.0	150	3.0	0.06	QI-NF-0246-0002-GF
G	25	5.0	32.0	1	SL-QI-LG05C25-32	25	14.0	19.3	150	3.0	0.03	QI-NG-0300-0002-GF
	25	8.0	41.0	1	SL-QI-LG08C25-41	25	14.0	22.3	150	3.0	0.03	QI-NG-0300-0002-GF
	32	8.0	43.0	1	SL-QI-LG08C32-43	32	14.0	25.0	150	3.0	0.06	QI-NG-0300-0002-GF
	40	6.0	49.0	1	SL-QI-LG06C40-49	40	14.0	27.8	150	3.0	0.14	QI-NG-0300-0002-GF
H	25	5.0	32.0	1	SL-QI-LH05C25-32	25	14.0	19.3	150	3.0	0.03	QI-NH-0400-0003-TF
	32	7.0	40.0	1	SL-QI-LH07C32-40	32	14.0	23.8	150	3.0	0.06	QI-NH-0400-0003-TF
	32	10.0	48.0	1	SL-QI-LH10C32-48	32	14.0	28.0	150	3.0	0.06	QI-NH-0400-0003-TF
	40	9.0	52.0	1	SL-QI-LH09C40-52	40	14.0	30.8	150	3.0	0.10	QI-NH-0400-0003-TF
J	32	7.0	40.0	1	SL-QI-LJ07C32-40	32	14.0	23.8	150	3.0	0.06	QI-NJ-0500-0004-TF
	32	10.0	49.0	1	SL-QI-LJ10C32-49	32	14.0	28.0	150	3.0	0.06	QI-NJ-0500-0004-TF
	40	9.5	50.0	1	SL-QI-LJ09C40-50	40	14.0	29.5	150	3.0	0.14	QI-NJ-0500-0004-TF
	40	9.0	52.0	1	SL-QI-LJ09C40-52	40	14.0	30.8	150	3.0	0.10	QI-NJ-0500-0004-TF
E	25	8.0	36.0	1	SL-QI-RE08C25-36	25	14.0	22.3	150	3.0	0.03	QI-NE-0200-0002-GF
	32	8.0	43.0	1	SL-QI-RE08C32-43	32	14.0	25.0	150	3.0	0.06	QI-NE-0200-0002-GF
F	25	8.0	40.0	1	SL-QI-RF08C25-40	25	14.0	22.3	150	3.0	0.03	QI-NF-0246-0002-GF
	32	7.0	42.0	1	SL-QI-RF07C32-42	32	14.0	24.0	150	3.0	0.06	QI-NF-0246-0002-GF
G	25	5.0	32.0	1	SL-QI-RG05C25-32	25	14.0	19.3	150	3.0	0.03	QI-NG-0300-0002-GF
	25	8.0	41.0	1	SL-QI-RG08C25-41	25	14.0	22.3	150	3.0	0.03	QI-NG-0300-0002-GF
	32	8.0	43.0	1	SL-QI-RG08C32-43	32	14.0	25.0	150	3.0	0.06	QI-NG-0300-0002-GF
	40	6.0	49.0	1	SL-QI-RG06C40-49	40	14.0	27.8	150	3.0	0.10	QI-NG-0300-0002-GF
H	25	5.0	32.0	1	SL-QI-RH05C25-32	25	14.0	19.3	150	3.0	0.03	QI-NH-0400-0003-TF
	32	7.0	40.0	1	SL-QI-RH07C32-40	32	14.0	23.8	150	3.0	0.06	QI-NH-0400-0003-TF
	32	10.0	48.0	1	SL-QI-RH10C32-48	32	14.0	28.0	150	3.0	0.06	QI-NH-0400-0003-TF
	40	9.0	52.0	1	SL-QI-RH09C40-52	40	14.0	30.8	150	3.0	0.10	QI-NH-0400-0003-TF
J	32	7.0	40.0	1	SL-QI-RJ07C32-40	32	14.0	23.8	150	3.0	0.06	QI-NJ-0500-0004-TF
	32	10.0	49.0	1	SL-QI-RJ10C32-49	32	14.0	28.0	150	3.0	0.06	QI-NJ-0500-0004-TF
	40	9.5	50.0	1	SL-QI-RJ09C40-50	40	14.0	29.5	150	3.0	0.10	QI-NJ-0500-0004-TF
	40	9.0	52.0	1	SL-QI-RJ09C40-52	40	14.0	30.8	150	3.0	0.10	QI-NJ-0500-0004-TF

SSC = To correspond with SSC on insert.

R = Right hand, L = Left hand

For complete list of spare parts, see www.sandvik.coromant.com

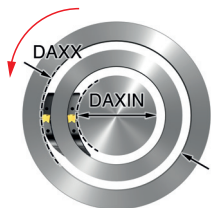
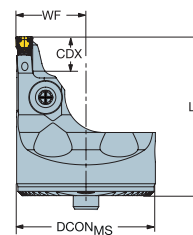
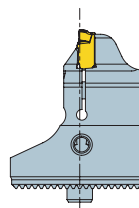
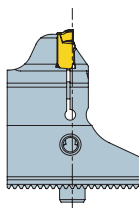
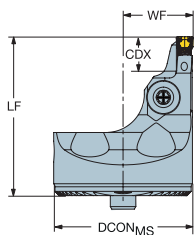
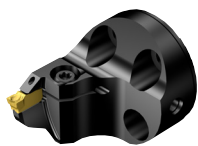
CoroCut® QI head for face grooving

Screw clamp design

CoroTurn® SL - Precision coolant supply

TSYC SL-QI-LF..C..A

SL-QI-RF..C..A



							Ordering code	Dimensions, mm						MIID
	SSC	CZC _{MS}	CDX	DAXIN	DAXX	CNSC		DCON _{MS}	LF	WF	BAR	NM	KG	
	G	32	8.7	24.0	35.0	1	SL-QI-LG08C32-024A	32	37.0	16.5	150	3.5	0.08	QI-NG-0300-0003-TF
		32	8.7	29.0	40.0	1	SL-QI-LG08C32-029A	32	37.0	16.5	150	3.5	0.08	QI-NG-0300-0003-TF
	H	32	8.7	27.0	45.0	1	SL-QI-LH08C32-027A	32	37.0	16.5	150	3.5	0.08	QI-NH-0400-0003-TF
		32	8.7	32.0	50.0	1	SL-QI-LH08C32-032A	32	37.0	16.5	150	3.5	0.08	QI-NH-0400-0003-TF
	G	32	8.7	24.0	35.0	1	SL-QI-RG08C32-024A	32	37.0	16.5	150	3.5	0.08	QI-NG-0300-0003-TF
		32	8.7	29.0	40.0	1	SL-QI-RG08C32-029A	32	37.0	16.5	150	3.5	0.08	QI-NG-0300-0003-TF
	H	32	8.7	27.0	45.0	1	SL-QI-RH08C32-027A	32	37.0	16.5	150	3.5	0.08	QI-NH-0400-0003-TF
		32	8.7	32.0	50.0	1	SL-QI-RH08C32-032A	32	37.0	16.5	150	3.5	0.08	QI-NH-0400-0003-TF

SSC = To correspond with SSC on insert.

R = Right hand, L = Left hand

For complete list of spare parts, see www.sandvik.coromant.com

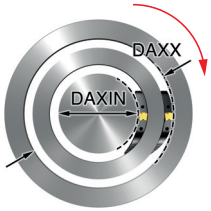
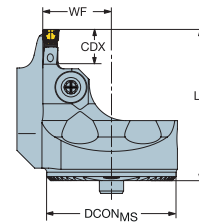
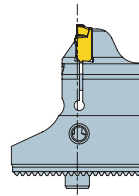
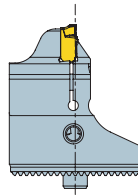
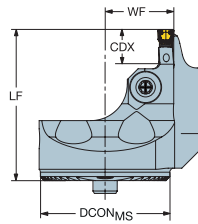
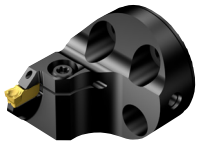
CoroCut® QI head for face grooving

Screw clamp design

CoroTurn® SL - Precision coolant supply

TSYC SL-QI-LF..C..B

SL-QI-RF..C..B



							Dimensions, mm						MIID	
	SSC	CZC _{MS}	CDX	DAXIN	DAXX	CNSC	Ordering code	DCON _{MS}	LF	WF	BAR	NM		KG
	G	32	8.7	24.0	35.0	1	SL-QI-LG08C32-024B	32	37.0	17.0	150	3.5	0.10	QI-NG-0300-0003-TF
		32	8.7	29.0	40.0	1	SL-QI-LG08C32-029B	32	37.0	17.0	150	3.5	0.10	QI-NG-0300-0003-TF
	H	32	8.7	27.0	45.0	1	SL-QI-LH08C32-027B	32	37.0	17.0	150	3.5	0.10	QI-NH-0400-0003-TF
		32	8.7	32.0	50.0	1	SL-QI-LH08C32-032B	32	37.0	17.0	150	3.5	0.10	QI-NH-0400-0003-TF
	G	32	8.7	24.0	35.0	1	SL-QI-RG08C32-024B	32	37.0	17.0	150	3.5	0.10	QI-NG-0300-0003-TF
		32	8.7	29.0	40.0	1	SL-QI-RG08C32-029B	32	37.0	17.0	150	3.5	0.10	QI-NG-0300-0003-TF
	H	32	8.7	27.0	45.0	1	SL-QI-RH08C32-027B	32	37.0	17.0	150	3.5	0.10	QI-NH-0400-0003-TF
	32	8.7	32.0	50.0	1	SL-QI-RH08C32-032B	32	37.0	17.0	150	3.5	0.10	QI-NH-0400-0003-TF	

SSC = To correspond with SSC on insert.

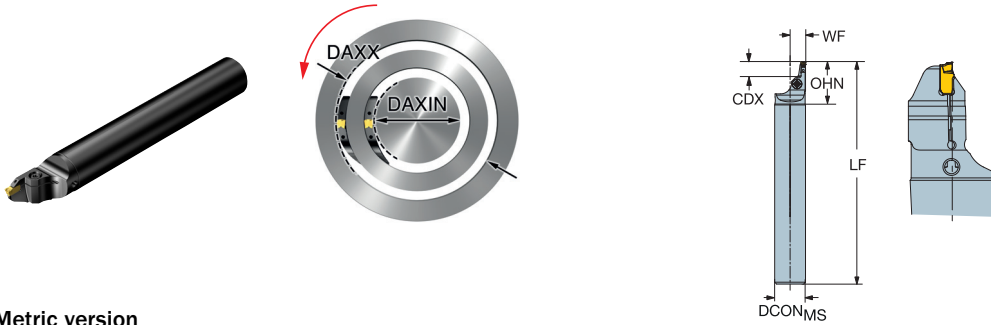
R = Right hand, L = Left hand

For complete list of spare parts, see www.sandvik.coromant.com

CoroCut® QI boring bar for face grooving

Screw clamp design

Cylindrical shank - Internal coolant supply



Metric version

SSC	CZC _{MS}	CDX	DAXIN	DAXX	OHX	CNSC	Ordering code	Dimensions, mm						MIID	
								DCON _{MS}	H	LF	WF	BAR	NM		KG
G	25	5.5	16.0	102.0	100.0	1	QI-LAFG05C25-016A	25	180.0	12.8	150	3.0	0.55	QI-NG-0300-0003-TF	
	25	12.0	16.0	42.0	100.0	1	QI-LAFG12C25-016A	25	180.0	12.8	150	3.0	0.53	QI-NG-0300-0003-TF	
	25	12.0	35.0	75.0	100.0	1	QI-LAFG12C25-035A	25	180.0	12.8	150	3.0	0.53	QI-NG-0300-0003-TF	
H	25	6.0	16.0	101.0	100.0	1	QI-LAFH06C25-016A	25	180.0	12.8	150	3.0	0.55	QI-NH-0400-0003-TF	
	25	12.0	16.0	42.0	100.0	1	QI-LAFH12C25-016A	25	180.0	12.8	150	3.0	0.53	QI-NH-0400-0003-TF	
	25	12.0	35.0	75.0	100.0	1	QI-LAFH12C25-035A	25	180.0	12.8	150	3.0	0.53	QI-NH-0400-0003-TF	
K	40	7.0	23.0	80.0	120.0	1	QI-LAFK07C40-023A	40	37.0	200.0	20.3	150	4.0	1.54	QI-NK-0600-0004-TF
	40	15.0	23.0	60.0	120.0	1	QI-LAFK15C40-023A	40	37.0	200.0	20.3	150	4.0	1.49	QI-NK-0600-0004-TF

Inch version

SSC	CZC _{MS}	CDX	DAXIN	DAXX	OHX	CNSC	Ordering code	Dimensions, inch						MIID
								DCON _{MS}	LF	WF	PSI	FT/LBS	LBS	
G	1	.217	.630	4.016	3.937	1	QI-LAFG05C16-016A	1.000	7.087	.508	2175	2.2	1.254	QI-NG-0300-0003-TF
	1	.472	.630	1.654	3.937	1	QI-LAFG12C16-016A	1.000	7.087	.508	2175	2.2	1.208	QI-NG-0300-0003-TF
	1	.472	1.378	2.953	3.937	1	QI-LAFG12C16-035A	1.000	7.087	.508	2175	2.2	1.210	QI-NG-0300-0003-TF
H	1	.236	.630	3.976	3.937	1	QI-LAFH06C16-016A	1.000	7.087	.508	2175	2.2	1.254	QI-NH-0400-0003-TF
	1	.472	.630	1.654	3.937	1	QI-LAFH12C16-016A	1.000	7.087	.508	2175	2.2	1.210	QI-NH-0400-0003-TF
	1	.472	1.378	2.953	3.937	1	QI-LAFH12C16-035A	1.000	7.087	.508	2175	2.2	1.215	QI-NH-0400-0003-TF

SSC = To correspond with SSC on insert.

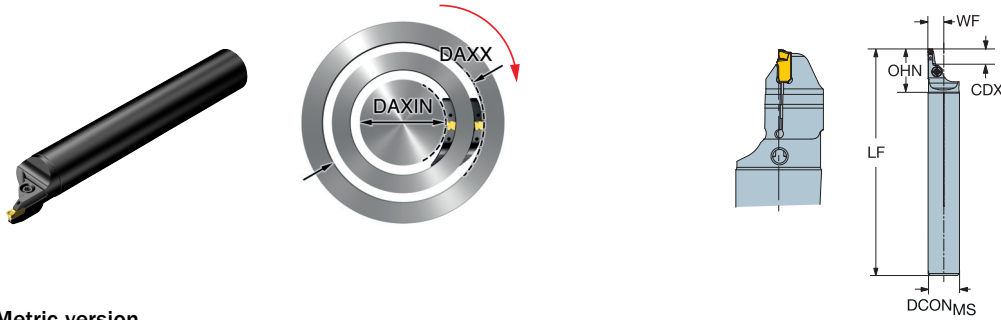
R = Right hand, L = Left hand

For complete list of spare parts, see www.sandvik.coromant.com

CoroCut® QI boring bar for face grooving

Screw clamp design

Cylindrical shank - Internal coolant supply



Metric version

								Dimensions, mm							MIID	
	SSC	CZC _{MS}	CDX	DAXIN	DAXX	OHX	CNSC	Ordering code	DCON _{MS}	H	LF	WF	BAR	NM		KG
	G	25	5.5	16.0	102.0	100.0	1	QI-RAFG05C25-016A	25	180.0	12.8	150	3.0	0.55	QI-NG-0300-0003-TF	
		25	12.0	16.0	42.0	100.0	1	QI-RAFG12C25-016A	25	180.0	12.8	150	3.0	0.53	QI-NG-0300-0003-TF	
		25	12.0	35.0	75.0	100.0	1	QI-RAFG12C25-035A	25	180.0	12.8	150	3.0	0.53	QI-NG-0300-0003-TF	
	H	25	6.0	16.0	101.0	100.0	1	QI-RAFH06C25-016A	25	180.0	12.8	150	3.0	0.55	QI-NH-0400-0003-TF	
		25	12.0	16.0	42.0	100.0	1	QI-RAFH12C25-016A	25	180.0	12.8	150	3.0	0.53	QI-NH-0400-0003-TF	
		25	12.0	35.0	75.0	100.0	1	QI-RAFH12C25-035A	25	180.0	12.8	150	3.0	0.53	QI-NH-0400-0003-TF	
	K	40	7.0	23.0	80.0	120.0	1	QI-RAFK07C40-023A	40	37.0	200.0	20.3	150	4.0	1.54	QI-NK-0600-0004-TF
		40	15.0	23.0	60.0	120.0	1	QI-RAFK15C40-023A	40	37.0	200.0	20.3	150	4.0	1.49	QI-NK-0600-0004-TF

Inch version

								Dimensions, inch							MIID
	SSC	CZC _{MS}	CDX	DAXIN	DAXX	OHX	CNSC	Ordering code	DCON _{MS}	LF	WF	PSI	FT/LBS	LBS	
	G	1	.217	.630	4.016	3.937	1	QI-RAFG05C16-016A	1.000	7.087	.508	2175	2.2	1.254	QI-NG-0300-0003-TF
		1	.472	.630	1.654	3.937	1	QI-RAFG12C16-016A	1.000	7.087	.508	2175	2.2	1.208	QI-NG-0300-0003-TF
		1	.472	1.378	2.953	3.937	1	QI-RAFG12C16-035A	1.000	7.087	.508	2175	2.2	1.210	QI-NG-0300-0003-TF
	H	1	.236	.630	3.976	3.937	1	QI-RAFH06C16-016A	1.000	7.087	.508	2175	2.2	1.301	QI-NH-0400-0003-TF
		1	.472	.630	1.654	3.937	1	QI-RAFH12C16-016A	1.000	7.087	.508	2175	2.2	1.354	QI-NH-0400-0003-TF
		1	.472	1.378	2.953	3.937	1	QI-RAFH12C16-035A	1.000	7.087	.508	2175	2.2	1.356	QI-NH-0400-0003-TF

SSC = To correspond with SSC on insert.

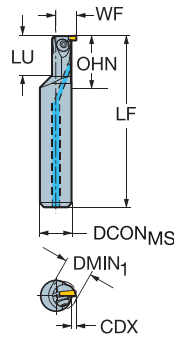
R = Right hand, L = Left hand

For complete list of spare parts, see www.sandvik.coromant.com

CoroCut® QI boring bar for grooving

Screw clamp design

Cylindrical shank - Internal coolant supply



Metric version

	SSC	CZC _{MS}	CDX	DMIN ₁	LU	OHX	CNCS	Ordering code	Dimensions, mm							MIID
									DCON _{MS}	LF	WF	CNT	BAR	NM	KG	
	E	16	2.0	12.0	20.0	64.0	1	QI-LAGE02C16-12	16	150.0	10.0	G 1/8-28	150	1.2	0.18	QI-NE-0200-0002-GF
		16	3.5	20.0	64.0	1	QI-LAGE03C16-20	16	150.0	11.5	G 1/8-28	150	2.0	0.19	QI-NE-0200-0002-GF	
		20	4.5	25.0	80.0	1	QI-LAGE04C20-25	20	180.0	14.5	G 1/8-28	150	2.5	0.39	QI-NE-0200-0002-GF	
	F	16	4.0	15.0	20.0	64.0	1	QI-LAGF04C16-15	16	150.0	12.0	G 1/8-28	150	1.5	0.19	QI-NF-0246-0002-GF
		16	3.5	20.0	64.0	1	QI-LAGF03C16-20	16	150.0	11.5	G 1/8-28	150	2.0	0.19	QI-NF-0246-0002-GF	
		20	4.5	25.0	80.0	1	QI-LAGF04C20-25	20	180.0	14.5	G 1/8-28	150	2.5	0.39	QI-NF-0246-0002-GF	
		25	6.0	32.0	100.0	1	QI-LAGF06C25-32	25	200.0	18.5	G 1/8-28	150	3.0	0.66	QI-NF-0246-0002-GF	
	G	20	4.5	16.0	20.0	80.0	1	QI-LAGG04C20-16	20	180.0	14.3	G 1/8-28	150	2.0	0.37	QI-NG-0300-0003-TF
		20	4.5	25.0	80.0	1	QI-LAGG04C20-25	20	180.0	14.5	G 1/8-28	150	2.5	0.39	QI-NG-0300-0003-TF	
25		6.0	32.0	100.0	1	QI-LAGG06C25-32	25	200.0	18.5	G 1/8-28	150	3.0	0.66	QI-NG-0300-0003-TF		
H	20	5.0	18.0	20.0	80.0	1	QI-LAGH05C20-18	20	180.0	14.8	G 1/8-28	150	2.0	0.37	QI-NH-0400-0003-TF	
	25	6.0	32.0	100.0	1	QI-LAGH06C25-32	25	200.0	18.5	G 1/8-28	150	3.0	0.66	QI-NH-0400-0003-TF		

Inch version

	SSC	CZC _{MS}	CDX	DMIN ₁	LU	OHX	CNCS	Ordering code	Dimensions, inch							MIID
									DCON _{MS}	LF	WF	CNT	PSI	FT/LBS	LBS	
	E	5/8	.079	.472	.787	2.500	1	QI-LAGE02C10-12	.625	5.906	.394	G 1/8-28	2175	0.9	.397	QI-NE-0200-0002-GF
		5/8	.138	.787	2.500	1	QI-LAGE03C10-20	.625	5.906	.453	G 1/8-28	2175	1.5	.421	QI-NE-0200-0002-GF	
		3/4	.177	.984	3.000	1	QI-LAGE04C12-25	.750	7.087	.571	G 1/8-28	2175	1.8	.913	QI-NE-0200-0002-GF	
	F	5/8	.157	.591	.787	2.500	1	QI-LAGF04C10-15	.625	5.906	.472	G 1/8-28	2175	1.1	.406	QI-NF-0246-0002-GF
		5/8	.138	.787	2.500	1	QI-LAGF03C10-20	.625	5.906	.453	G 1/8-28	2175	1.5	.419	QI-NF-0246-0002-GF	
		3/4	.177	.984	3.000	1	QI-LAGF04C12-25	.750	7.087	.571	G 1/8-28	2175	1.8	.772	QI-NF-0246-0002-GF	
		1	.236	1.260	4.000	1	QI-LAGF06C16-32	1.000	7.874	.736	G 1/8-28	2175	2.2	1.501	QI-NF-0246-0002-GF	
	G	3/4	.177	.630	.787	3.000	1	QI-LAGG04C12-16	.750	7.087	.561	G 1/8-28	2175	1.5	.732	QI-NG-0300-0003-TF
		3/4	.177	.984	3.000	1	QI-LAGG04C12-25	.750	7.087	.571	G 1/8-28	2175	1.8	.772	QI-NG-0300-0003-TF	
1		.236	1.260	4.000	1	QI-LAGG06C16-32	1.000	7.874	.736	G 1/8-28	2175	2.2	1.499	QI-NG-0300-0003-TF		
H	3/4	.197	.709	.787	3.000	1	QI-LAGH05C12-18	.750	7.087	.581	G 1/8-28	2175	1.5	.741	QI-NH-0400-0003-TF	
	1	.236	1.260	4.000	1	QI-LAGH06C16-32	1.000	7.874	.736	G 1/8-28	2175	2.2	1.499	QI-NH-0400-0003-TF		

SSC = To correspond with SSC on insert.

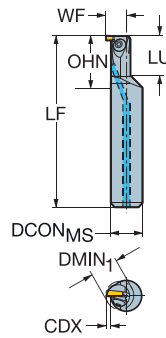
R = Right hand, L = Left hand

For complete list of spare parts, see www.sandvik.coromant.com

CoroCut® QI boring bar for grooving

Screw clamp design

Cylindrical shank - Internal coolant supply



Metric version

SSC	CZC _{MS}	CDX	DMIN ₁	LU	OHX	CNSC	Ordering code	Dimensions, mm				BAR	NM	KG	MIID
								DCON _{MS}	LF	WF	CNT				
E	16	2.0	12.0	20.0	64.0	1	QI-RAGE02C16-12	16	150.0	10.0	G 1/8-28	150	1.2	0.18	QI-NE-0200-0002-GF
	16	3.5	20.0	64.0	64.0	1	QI-RAGE03C16-20	16	150.0	11.5	G 1/8-28	150	2.0	0.19	QI-NE-0200-0002-GF
	20	4.5	25.0	80.0	80.0	1	QI-RAGE04C20-25	20	180.0	14.5	G 1/8-28	150	2.5	0.39	QI-NE-0200-0002-GF
F	16	4.0	15.0	20.0	64.0	1	QI-RAGF04C16-15	16	150.0	12.0	G 1/8-28	150	1.5	0.19	QI-NF-0246-0002-GF
	16	3.5	20.0	64.0	64.0	1	QI-RAGF03C16-20	16	150.0	11.5	G 1/8-28	150	2.0	0.19	QI-NF-0246-0002-GF
	20	4.5	25.0	80.0	80.0	1	QI-RAGF04C20-25	20	180.0	14.5	G 1/8-28	150	2.5	0.39	QI-NF-0246-0002-GF
	25	6.0	32.0	100.0	100.0	1	QI-RAGF06C25-32	25	200.0	18.5	G 1/8-28	150	3.0	0.66	QI-NF-0246-0002-GF
G	20	4.5	16.0	20.0	80.0	1	QI-RAGG04C20-16	20	180.0	14.3	G 1/8-28	150	2.0	0.37	QI-NG-0300-0003-TF
	20	4.5	25.0	80.0	80.0	1	QI-RAGG04C20-25	20	180.0	14.5	G 1/8-28	150	2.5	0.39	QI-NG-0300-0003-TF
	25	6.0	32.0	100.0	100.0	1	QI-RAGG06C25-32	25	200.0	18.5	G 1/8-28	150	3.0	0.66	QI-NG-0300-0003-TF
H	20	5.0	18.0	20.0	80.0	1	QI-RAGH05C20-18	20	180.0	14.8	G 1/8-28	150	2.0	0.37	QI-NH-0400-0003-TF
	25	6.0	32.0	100.0	100.0	1	QI-RAGH06C25-32	25	200.0	18.5	G 1/8-28	150	3.0	0.66	QI-NH-0400-0003-TF

Inch version

SSC	CZC _{MS}	CDX	DMIN ₁	LU	OHX	CNSC	Ordering code	Dimensions, inch				PSI	FT/LBS	LBS	MIID
								DCON _{MS}	LF	WF	CNT				
E	5/8	.079	.472	.787	2.500	1	QI-RAGE02C10-12	.625	5.906	.394	G 1/8-28	2175	0.9	.397	QI-NE-0200-0002-GF
	5/8	.138	.787	2.500	2.500	1	QI-RAGE03C10-20	.625	5.906	.453	G 1/8-28	2175	1.5	.421	QI-NE-0200-0002-GF
	3/4	.177	.984	3.000	3.000	1	QI-RAGE04C12-25	.750	7.087	.571	G 1/8-28	2175	1.8	.772	QI-NE-0200-0002-GF
F	5/8	.157	.591	.787	2.500	1	QI-RAGF04C10-15	.625	5.906	.472	G 1/8-28	2175	1.1	.044	QI-NF-0246-0002-GF
	5/8	.138	.787	2.500	2.500	1	QI-RAGF03C10-20	.625	5.906	.453	G 1/8-28	2175	1.5	.419	QI-NF-0246-0002-GF
	3/4	.177	.984	3.000	3.000	1	QI-RAGF04C12-25	.750	7.087	.571	G 1/8-28	2175	1.8	.913	QI-NF-0246-0002-GF
	1	.236	1.260	4.000	4.000	1	QI-RAGF06C16-32	1.000	7.874	.736	G 1/8-28	2175	2.2	1.501	QI-NF-0246-0002-GF
G	3/4	.177	.630	.787	3.000	1	QI-RAGG04C12-16	.750	7.087	.561	G 1/8-28	2175	1.5	.732	QI-NG-0300-0003-TF
	3/4	.177	.984	3.000	3.000	1	QI-RAGG04C12-25	.750	7.087	.571	G 1/8-28	2175	1.8	.772	QI-NG-0300-0003-TF
	1	.236	1.260	4.000	4.000	1	QI-RAGG06C16-32	1.000	7.874	.736	G 1/8-28	2175	2.2	1.499	QI-NG-0300-0003-TF
H	3/4	.197	.709	.787	3.000	1	QI-RAGH05C12-18	.750	7.087	.581	G 1/8-28	2175	1.5	.741	QI-NH-0400-0003-TF

SSC = To correspond with SSC on insert.

R = Right hand, L = Left hand

For complete list of spare parts, see www.sandvik.coromant.com