

General Purpose Tools

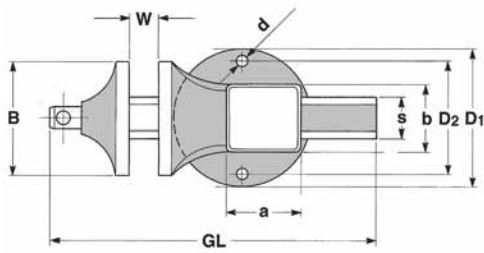
- Wide selection of accessory tools & equipment.
- Proven durable designs.



Type	No. of Models	Page
RIDGID® / Peddinghaus® Bench Vices	10	7.2
RIDGID® / Peddinghaus® Accessories	43	7.3
Multiplus Vices	2	7.5
Pipe Vices & Workstands	5	7.6
Anvils	3	7.7
Work Tables	3	7.8
Tape Measures	5	7.9
Multi-Purpose Screwdriver	1	7.9
Laser Leveling / Alignment	2	7.10
Level	1	7.12
Saws	2	7.13
Saw Blades	2	7.13
Snips	5	7.14
Bolt Cutters	6	7.15
Cable Cutter	1	7.16
Threaded Rod Cutter	2	7.16
Screw Extractors	12	7.17
Twist Drills	9	7.17
Replacement Drill Guides	10	7.18
Screw Extractor Sets	2	7.18

GENERAL PURPOSE TOOLS

RIDGID® / Peddinghaus® Vices



- These vices are known for quality and durability. Produced in Germany for over 100 years.
- All forged steel construction 3 times stronger than cast iron.
- Hardened and serrated jaws for maximum durability.
- Large hardened anvil you can really use.
- Machined and hardened sliding surfaces.
- Rolled twin start Acme thread for precise operation and longevity.
- Removable steel spindle nut.
- Measuring scale.



Matador

- Professional bench vice for the workshop.

Cat. No.	Model No.	Pipe Capacity	Matador: Dimensions mm (see drawing)								Weight	
			B	W	GL	S	axb	D1	D2	d	lb.	kg
10803	100	—	100	125	270	36	65 x 60	120	90	11	13.0	6,0
10804	120	—	120	150	340	50	75 x 70	150	115	14	22.0	10,0
10805	140	—	140	200	440	55	95 x 90	180	145	14	39.7	18,0
10806	160	—	160	225	500	65	120 x 110	180	145	14	55.2	25,0
10807	180	—	180	225	500	65	120 x 110	180	145	14	57.4	26,0



Superior

- Professional vice with built-in pipe jaws for the installation industry.

Cat. No.	Model No.	Pipe Capacity	Superior: Dimensions mm (see drawing)								Weight	
			B	W	GL	S	axb	D1	D2	d	lb.	kg
10814	120	¾" - 3"	120	150	340	50	75 x 70	150	115	14	22.0	10,0
10815	140	½" - 3 ½"	140	200	440	55	95 x 90	180	145	14	39.7	18,0
10816	160	½" - 4"	160	225	500	65	120 x 110	180	145	14	55.2	25,0





Junior

- Medium-duty vice for the professional and demanding DIY-er.

Cat. No.	Model No.	Pipe Capacity	Junior: Dimensions mm (see drawing)								Weight	
			B	W	GL	S	axb	D1	D2	d	lb.	kg
10808	120	—	120	130	330	50	75 x 70	150	115	14	22.0	10,0
10809	140	—	140	180	430	55	95 x 85	180	145	14	39.7	18,0

RIDGID® / Peddinghaus® Accessories

360° Swivel Bases

- Allows vice to lock securely in any position.



Cat. No.	Type	Weight kg		Std. Pack
		lbs.	kg	
10213	Swivel Base - Matador 100	2	0,9	1
10214	Swivel Base - Matador 120	2.9	1,3	1
10215	Swivel Base - Matador 140 / 180	6.6	3,0	1
10217	Swivel Base - Junior 120	2.9	1,3	1
10218	Swivel Base - Junior 140	6.6	3,0	1
10616	Swivel Base - Superior 120	2.9	1,3	1
10617	Swivel Base - Superior 140 / 160	6.6	3,0	1

Clamping Screws

- For attaching vices to the bench.



Cat. No.	Type	Weight kg		Std. Pack
		lbs.	kg	
10223	Clamping Screw - Matador 100	3.1	1,4	1
10224	Clamping Screw - Matador 120	4.6	2,1	1
10225	Clamping Screw - Junior 120	4.6	2,1	1
10730	Clamping Screw - Superior 120	4.6	2,1	1

Mechanical Elevators

- Serve to raise or lower the vice to the correct working height.



Height adjustment: 200 mm.

Cat. No.	Type	Weight kg		Std. Pack
		lbs.	kg	
10313	Mechanical Elevator - Matador 100	29	13,0	1
10314	Mechanical Elevator - Matador 120	29	13,0	1
10315	Mechanical Elevator - Matador 140 / 180	29	13,0	1
10725	Mechanical Elevator - Superior 120	29	13,0	1
10726	Mechanical Elevator - Superior 140 / 160	29	13,0	1
10733	Mechanical Elevator - Junior 120	29	13,0	1
10734	Mechanical Elevator - Junior 140	29	13,0	1

GENERAL PURPOSE TOOLS

Automatic Elevators



Height adjustment: 300 mm.

Cat. No.	Type	Weight kg		Std. Pack
		lbs.	kg	
10323	Automatic Elevator - Matador 100	33.1	15,0	1
10324	Automatic Elevator - Matador 120	33.1	15,0	1
10325	Automatic Elevator - Matador 140	33.1	15,0	1
10335	Automatic Elevator - Matador 160 / 180	33.1	15,0	1
10727	Automatic Elevator - Superior 120	33.1	15,0	1
10728	Automatic Elevator - Superior 140	33.1	15,0	1
10729	Automatic Elevator - Superior 160	33.1	15,0	1
10731	Automatic Elevator - Junior 120	33.1	15,0	1
10732	Automatic Elevator - Junior 140	33.1	15,0	1

Peddi-Lift

- Mechanical elevator folds away under workbench to leave bench top free for other work.



Cat. No.	Type	Weight kg		Std. Pack
		lbs.	kg	
40913	Peddi-Lift Only	15.5	7,0	1
10337	Peddi-Lift with Matador 120	37.5	17,0	1

Snap-On Jaws

RIDGID® Peddinghaus snap-on jaws adapt your Matador vice to handle any kind of job, securely and safely clamping the workpiece.



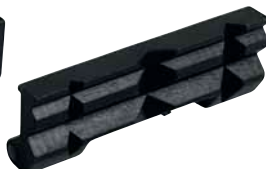
Snap-On Steel Pipe Jaws



Snap-On Plastic Jaws



Snap-On Steel Jaws



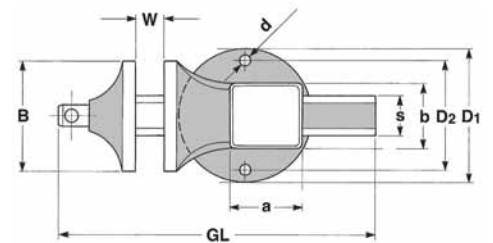
Snap-On Steel Prismatic Jaws

Cat. No.	Type	Weight kg		Std. Pack
		lbs.	kg	
10834	Pipe Jaw - 120	1.1	0,5	1
10835	Pipe Jaw - 140	1.5	0,7	1
10836	Pipe Jaw - 160	2.0	0,9	1
10837	Pipe Jaw - 180	2.2	1,0	1
10844	Set of 2 Plastic Jaws - 120	8.0	0,4	1
10845	Set of 2 Plastic Jaws - 140	1.1	0,5	1
10846	Set of 2 Plastic Jaws - 160	1.1	0,5	1
10847	Set of 2 Plastic Jaws - 180	1.3	0,6	1
10874	Set of 2 Steel Jaws - 120	4.0	1,8	1
10875	Set of 2 Steel Jaws - 140	3.3	1,5	1
10876	Set of 2 Steel Jaws - 160	4.6	2,1	1
10884	Set of 2 Prismatic Jaws - 120	2.2	1,0	1
10885	Set of 2 Prismatic Jaws - 140	2.9	1,3	1
10886	Set of 2 Prismatic Jaws - 160	4.0	1,8	1



Multiplus Vices

- Professional multipurpose vice with bending and straightening attachment.
- Suitable for bending steel, stainless steel and hydraulic pipes and straightening steel strips.
- A force of 2,5 / 3,5 tons is applied by the spindle of the Multiplus 120 / 160, allowing bends of AISI 304 stainless steel pipe up to 22 / 28 mm with 1,5 mm wall thickness.
- Supplied complete and ready to use with 15 mm, 18 mm and 22 mm formers, straightening anvil and 2 corner supports.
- Its unique design and built-in quality features make it one of the most desirable handtools of the past decades. A real 3 in 1 tool capable of clamping, bending and straightening.



Cat. No.	Model No.	Multiplus: Dimensions mm (see drawing)								Weight	
		B	W	GL	S	axb	D1	D2	d	lb.	kg
35821	120	120	140	390	50	75 x 75	150	115	14	44.1	20,0
15318	160	160	240	500	65	120 x 110	180	145	14	81.6	37,0

Accessories

Cat. No.	Model No.	Description	Radius	Multiplus 120	Multiplus 160	Weight kg		Std. Pack
						lbs.	kg	
83636	—	Former 12 mm	62 mm	+	+	1.8	0,8	1
83556	—	Former 15 mm	62 mm	x	x	2.2	1,0	1
83566	—	Former 18 mm	77 mm	x	x	4.4	2,0	1
83576	—	Former 22 mm	114 mm	x	x	4.4	2,0	1
83646	—	Former 28 mm	114 mm	N/A	+	4.4	2,0	1
83606	—	Straightening Tool	—	x	x	3.6	1,5	1

x = standard, + = option, N/A = not available



GENERAL PURPOSE TOOLS

Vices



Pionier Hinged Pipe Vices

- Made from high grade cast iron.
- Replaceable hardened steel jaws.
- Rolled spindle thread.
- Available in three models (2" - 3" - 4").

Cat. No.	Model No.	Type	Capacity		Weight	
			in.	mm	lbs.	kg
11052	2	Pionier Vice	1/8 - 2	10 - 60	9.1	4,3
11053	3	Pionier Vice	1/8 - 3	10 - 89	3.6	6,5
11054	4	Pionier Vice	1/8 - 4	10 - 114	22.1	10,0

Portable Workstand with Pipe Vice

- Pipe bending plate.
- Storage shelf for tools and hinged floor board for stability.
- Special safety lock stops workstand accidentally falling forward.



Cat. No.	Model No.	Type	Capacity		Weight	
			in.	mm	lbs.	kg
12202	2	Pionier Workstand	1/8 - 2	10 - 60	50.7	23,0
12203	3	Pionier Workstand	1/8 - 3	10 - 89	60.1	30,0

- Model No. 2 bends 1/2" to 1 1/2" pipe.
- Model No. 3 bends 1" to 2" pipe.

Accessories

Cat. No.	Model No.	Type	Weight	
			lbs.	kg
12022	—	Vice clamp for Model No. 2*	3.1	1,4
12223	—	Vice clamp for Model No. 3*	3.1	1,4

* Both models can be fitted with Matador or Superior Model 120 vices (requires vice clamp).

Anvils



Twin Horn Anvil



*Portable stand fits all anvils
380 x 460 x 550 mm
Cat. No. 14200*

- Drop forged steel construction. Ground and hardened top surface.
- Available in weights from 35 kg to 125 kg.
- Models 9 and 12 have tool locating holes.

Twin Horn anvil - Model No.		5	9	12
Cat. No.		14165	14169	14190
Weight	lb.	77.2	165.4	275.5
	kg	35	75	125
Width of face	mm	95	125	130
Length of face	mm	205	265	300
Length of each horn	mm	135	185	210
Total length	mm	475	635	720
Total height	mm	200	265	310
Base	mm	170 x 195	235 x 275	270 x 345

GENERAL PURPOSE TOOLS

Work Tables

- Heavy duty construction.
- Tough wood working surface which has been specially treated to resist water and dust.
- The legs are of tubular construction designed to carry heavy loads.
- The benches are simple to erect and dismantle and easy to transport.
- Available in 3 sizes.



Cat. No.	Model No.	Size cm	Table Top Thickness mm	Height cm	Weight		Std. Pack
					lb.	kg	
16601	1100	83 x 50	30	80,0	46.3	21,0	1

Model 1100 Work Table



Cat. No.	Model No.	Size cm	Table Top Thickness mm	Height cm	Weight		Std. Pack
					lb.	kg	
16361	1300	108 x 62	22	83,6	75.0	34,0	1

Model 1300 Work Table



Cat. No.	Model No.	Size cm	Table Top Thickness mm	Height cm	Weight		Std. Pack
					lb.	kg	
15841	1400	107 x 75	30	84,0	88.2	40,0	1

Model 1400 Work Table

Tape Measures

NEW



Five models of brand new 'JobSite Proof' tape measures, 3x metric and 2x dual metric/imperial, feature an innovative design incorporating a heavy-duty rubber bumper and stainless plate cover for superior durability to withstand even the toughest jobsite conditions. Other great features and benefits that RIDGID® tape measures offer are:

- Built-in shock bumper reducing impact when rewinding.
- Double-sided full steel hook with slot is durable and can even hook onto a nail head.
- Stainless steel case with full surround anti-slip rubber offers more durability and comfort while easily resisting impacts.
- Heavy-duty, 2-sided nylon-coated blade, resists abrasion and breakage.
- Superior blade-to-hook strength.
- Wide blades, large numbers for easier reading.
- Durable stainless steel belt clip.

Cat. No.	Model No.	Description	Blade		Weight		Std. Pack
			Length m	Width mm	lb.	kg	
38768	316-M	Tape Measure 3 m – Metric	3	16	.35	0,16	1
38773	525-M	Tape Measure 5 m – Metric	5	25	.75	0,34	1
38778	825-M	Tape Measure 8 m – Metric	8	25	1	0,46	1
38783	316-IM	Tape Measure 3 m – Dual Metric / Imperial	3	16	.35	0,16	1
38788	525-IM	Tape Measure 5 m – Dual Metric / Imperial	5	25	.75	0,34	1

Multi-Purpose 6-in-1 Screwdriver



6-in-1 Screwdriver

- Includes:
 - #1 and #2 Phillips® tip.
 - 3/16" and 1/4" flat tip.
 - 5/16" and 1/4" nut drivers in the shaft.
- Contoured cushioned grip for increased grip and torque.
- Ball/spring retention shaft with positive snap-fit locking handle.

Cat. No.	Model No.	Description	Body		Weight		Std. Pack
			in.	mm	lb.	kg	
16573	1974	6-in-1 Screwdriver	8	203	.24	0,11	1

Laser Leveling / Alignment

NEW



micro CL-100 Self-Leveling Cross-Line Laser

- Single knob operation, very easy to use.
- Leveling and alignment jobs done at the blink of an eye.
- Instant projection of super-bright vertical and horizontal lines.
- Laser type: Class 2, 630 - 670 nm.
- Millimeter accuracy: 2 mm / 10 m.
- Extended interior range of 30 meters.
- Self-leveling range of $\pm 6^\circ$.
- Protection rating: IP54.
- Integrated 360° swivel base.
- Packed in a rugged plastic carrying case.
- Elevating tripod & laser enhancing glasses included for free!

Cat. No.	Model No.	Description	Projection	Diode nm	Range m	Weight		Std. Pack
						lb.	kg	
38758	micro CL-100	Self-Levelling Cross-Line Laser kit*	Horizontal & Vertical	630-670	30	1.1	0,50	1

Accessories

41383	-	Elevating Tripod for micro CL-100/DL-500				2.2	1	1
41378	-	Laser Enhancing Glasses for micro CL-100/DL-500				.22	0,1	1
41373	-	Magnetic Target Plate for micro CL-100/DL-500				.22	0,1	1

*This kit includes Laser Enhancing Glasses and Elevating Tripod.

NEW



micro DL-500 Self-Leveling 5-Dot Laser

- Compact dot laser for easily transferring measured points, setting out right angles and align various construction elements.
- Projects simultaneously 5 concentrated laser dots (2x vertical / 3x horizontal).
- Laser type: Class 2, 635-670 nm.
- User-friendly: turn the knob, start working!
- Millimeter accuracy: ± 2 mm / 10 m.
- Interior Range: 30 meters.
- Self-levelling range: $\pm 4,5^\circ$.
- Protection Rating: IP55.
- Integrated 360° Swivel Base.
- Packed in a rugged plastic case that also includes a magnetic base, target plate, mounting strap and laser enhancing glasses.

Cat. No.	Model No.	Description	Projection	Diode nm	Range m	Weight		Std. Pack
						lb.	kg	
38763	micro DL-500	Self-Levelling 5-Dot Laser kit*	2x Vertical / 3x Horizontal Dots	630-670	30	1.28	0,58	1



Accessories

41383	–	Elevating Tripod for micro CL-100/DL-500				1.68	0,76	1
41378	–	Laser Enhancing Glasses for micro CL-100/DL-500				.22	0,1	1
41373	–	Magnetic Target Plate for micro CL-100/DL-500				.22	0,1	1
41723	–	Magnetic Base with Mounting Strap for micro DL-500				1.19	0,54	1

*This kit includes Laser Enhancing Glasses, Magnetic Target Plate and Magnetic Base with Mounting Strap.



GENERAL PURPOSE TOOLS

Level



Model 395E
Magnetic Torpedo Level

Magnetic Torpedo Level

- Light and compact, ideal for general use and work in tight places.
- Cast aluminium profile.
- Glow in the dark vial frames for dark areas.
- Tubular vials, 180° - 45° - 90°.
- Three strong rare earth magnets.
- V-grooved edge to balance level on pipe.
- Large top-read level vial.
- Accuracy: 1,0 mm/m.

Cat. No.	Model No.	Description	Length		Weight		Std. Pack
			in.	mm	lb.	kg	
22398	395E	Magnetic Torpedo Level	9	230	0.33	0,15	1

Saws



Model 212 Pro Arc Hack Saw

Model 1205 PVC/ABS Saw

Model 212 Pro Arc Saw

Designed to offer superior strength and maximum control in a lightweight professional hack saw. The bow frame casting provides both greater strength and improved work piece access. Blade replacement is a snap with the large tensioning knob and the rubberized hand grips fore and aft ensure a controlled and speedy cut. In addition, the Model 212 Pro Arc provides two positions for mounting the blade (either 45° or 90° cut angles) to handle the job.

Model 1205 PVC/ABS Saw

Designed for cutting plastic pipe, plywood and veneers. Has an aluminum handle and 18" blade with replacements available.

Cat. No.	Model No.	Description	Weight		Std. Pack
			lb.	kg	
20238	212	Pro Arc Aluminum Hack Saw (includes 12" blade)	1.3	0,6	1
50522	1205	18" PVC/ABS Pipe Saw	.875	0,4	6
50532	1205-2	18" Replacement Blade	.5	0,2	1

Note 18" Blade standard with Model 1205-2.



Bi-Metal High-Speed Hack Saw Blades

Bi-Metal High-Speed Hack Saw Blades

Bi-Metal Blades have high-speed steel teeth electron-beam-welded to tough, yet flexible die steel backing to produce the best possible performance in a premium quality blade. Available in 18 TPI – 24 TPI and 300 mm length.

Cat. No.	Model No.	Type and Application	Blade Size		Teeth per Inch	Weight		Std. Pack
			in.	mm		lb.	kg	
56847	1218-BM	Heavy Duty Applications > 3 mm	12	300	18	3,3	1,5	100
56852	1224-BM	General Purpose Applications	12	300	24	3,3	1,5	100

GENERAL PURPOSE TOOLS

Snips



Model 786
Aviation Snips (cuts right)



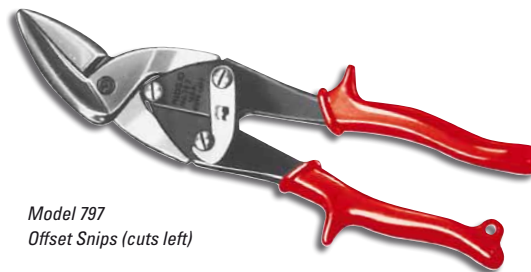
Model 788
Aviation Snips (cuts straight)



Model 787
Aviation Snips (cuts left)



Model 796
Offset Snips (cuts right)



Model 797
Offset Snips (cuts left)

All RIDGID Snips feature forged, heat-treated blades for increased quality and performance.

Aviation Snips and Offset Snips

Ideal for cutting 18-gauge or lighter cold-rolled sheet steel. Compound action results in maximum jaw power with minimum effort. Aviation snips threaded jaw bolt allows the blades to be realigned after prolonged use.

Cat. No.	Model No.	Description	Length		Cut		Weight		Std. Pack
			in.	mm	in.	mm	lb.	kg	
54115	786	Snip - Cuts Right	10½	267	1¾	35	1	0,5	6
54120	787	Snip - Cuts Left	10½	267	1¾	35	1	0,5	6
54125	788	Snip - Cuts Straight	10½	267	1½	38	1	0,5	6
16202	796	Offset Snip - Cuts Right	10½	267	1½	38	1	0,5	6
16207	797	Offset Snip - Cuts Left	10½	267	1½	38	1	0,5	6

Bolt Cutting



Bolt Cutters

- Hardened alloy steel jaws are designed and manufactured to assure the longest possible blade life.
- One-step internal cam mechanism provides the quickest and simplest way to keep the cutting blades precisely aligned.
- Handles and grips designed to allow greater mechanical advantage for crisp, controlled cutting.

Ordering Information

Cat. No.	Model No.	Bolt Cutter Description	Capacity/Metals						Length Overall		Weight		Std. Pack
			Soft (15RC) ¹		Medium (31RC) ²		Hard (42RC) ³		in.	mm	lb.	kg	
			in.	mm	in.	mm	in.	mm					
14213	S14	Center Cut	5/16	7,9	1/4	6,4	3/16	4,8	15	379	1 1/4	1,0	1
14218	S18	Center Cut	3/8	9,5	5/16	7,9	1/4	6,4	19	485	3 3/8	1,5	1
14223	S24	Center Cut	7/16	11,0	3/8	9,5	5/16	7,9	26	652	5 7/8	2,7	1
14228	S30	Center Cut	1/2	12,7	7/16	11,0	3/8	9,5	31	800	8 7/8	4,0	1
14233	S36	Center Cut	9/16	14,3	1/2	12,7	7/16	11,0	38	958	13 1/2	6,1	1
14238	S42	Center Cut	11/16	17,5	9/16	14,3	1/2	12,7	44	1.115	18 1/4	8,3	1

¹Soft steel and nonferrous metals, bolts, screws, rivets, wire.

²Iron and steel.

³Stainless steel, spring wire, heat-treated rod, reinforcing rod.

Replacement Heads

Cat. No.	Description	Weight		Std. Pack
		lb.	kg	
18363	S14 Head Assembly	7/8	1,0	1
18368	S18 Head Assembly	1 1/4	1,5	1
18373	S24 Head Assembly	2 1/4	2,7	1
18378	S30 Head Assembly	8 7/8	4,0	1
18383	S36 Head Assembly	13 1/2	6,1	1
18388	S42 Head Assembly	18 1/4	8,3	1

GENERAL PURPOSE TOOLS

Cable Cutting



Model 1380 Cable Cutter

The Model 1380 Cable Cutter is designed to shear-cut insulated aluminum and copper cable through 1 $\frac{3}{8}$ " diameter and 750 MCM*. Drop-forged, heat-treated, alloy steel jaws shear cable with minimum distortion of internal wires. Fitted with fiberglass-insulated handles and rubber grips.

**Not intended for cutting steel or ACSR cable.*

Cat. No.	Model No.	Description	Capacity	Weight		Std. Pack
				lb.	kg	
83350	1380	Cable Cutter	Aluminum and Copper Cable through 1 $\frac{3}{8}$ " Diameter and 750 MCM	4 $\frac{1}{2}$	2,0	1

Threaded Rod Cutting



Model 1390M Threaded Rod Cutter

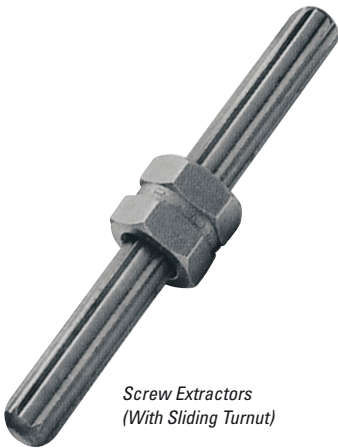
- Designed to cut threaded rods used to hang pipes for air conditioning, sprinkler installations and other lightweight frames from the ceiling.
- Makes clean cuts without damaging thread.

Cat. No.	Model No.	Description	Weight		Std. Pack
			lb.	kg	
20271	—	Threaded Rod Cutter with 8 mm Blades	12.1	5,4	1
26891	—	Threaded Rod Cutter with 10 mm Blades	12.1	5,4	1

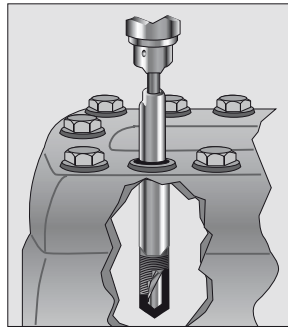
Replacement Heads

Cat. No.	Model No.	Description	Weight		Std. Pack
			lb.	kg	
58406	—	Set of 6 mm Blades			1
57116	—	Set of 8 mm Blades			1
57126	—	Set of 10 mm Blades			1

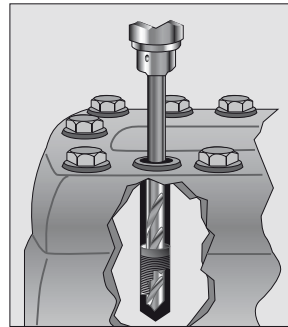
Screw Extractors



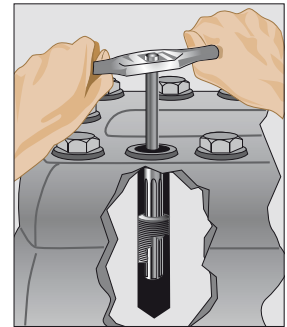
Screw Extractors
(With Sliding Turnut)



FIRST – Drill a small hole clear through the broken end using a snug fitting RIDGID Drill Guide for precision centering. This centering hole is for the larger drill to follow.



SECOND – Remove Drill Guide. Drill out the small center hole to larger diameter for receiving the “longrip” Extractor.



THIRD – Drive the “longrip” Extractor into the thin hollow shell and turn it out.

Cat. No.	Model No.	Screw Diameter		Use Drill		Flute Diameter		Length Overall		Maximum Depth		Weight		Std Pack
		in.	mm	in.	mm	in.	mm	in.	mm	in.	mm	oz.	g	
35535	1	1/4	6	1/8	3	0.139	3,5	2 5/16	59	1	25	1/2	14	1
35540	2	5/16	8	3/16	5	0.205	5,2	2 3/4	70	1	25	1	28	1
35545	3	3/8	9,5	1/4	6	0.272	6,9	3 1/16	78	1	25	1 1/4	35	1
35550	4	7/16	11	5/16	8	0.338	8,6	3 5/16	84	1	25	1 3/4	50	1
35555	5	1/2 - 9/16	13 - 14	1 1/2	9	0.374	9,5	3 3/4	95	1	25	2 1/4	64	1
		(No Turnut)												
35560	6	5/8	16	7/16	11	0.471	12,0	4 1/8	105	2	51	3	85	1
35565	7	3/4	19	1/2	13	0.538	13,7	4 1/2	114	2	51	4	113	1
35570	8	7/8 - 1	22 - 25	5/8	16	0.665	16,9	4 3/4	121	3	76	6 1/2	184	1

Screw Extractors
(In Sets)



Extractor Sets. More sets on 7.18

Cat. No.	Model No.	Description	Weight		Std. Pack
			oz.	g	
35575	–	Includes Nos. 3,4 and 5	8	227	1
35580	–	Includes Nos. 1,2,3,4 and 5	8	227	1

Twist Drills



High-Speed Twist Drills

Cat. No.	Model No.	Diameter		Overall Length		Weight		Std. Pack
		in.	mm	in.	mm	oz.	g	
35720	1	1/8	3	2 1/2	63	1/4	7	1
35725	2	3/16	5	3	73	1/2	14	1
35730	3	1/4	6	3 1/2	89	3/4	21	1
35735	4	5/16	8	4	102	1 1/4	35	1
35740	5	1 1/2	9	4 1/2	114	1 1/2	43	1
35745	6	7/16	11	4 3/4	121	2 1/2	71	1
35750	7	1/2	13	5	127	3 1/2	99	1
35755	8	5/8	16	5 1/2	139	5 1/2	156	1
35760	36	1/4	6	6	152	1 1/2	43	1

GENERAL PURPOSE TOOLS

Replacement Drill Guides



Replacement Drill Guides
(One-Piece Type)

Cat. No.	Model No.	Diameter O.D.		Overall Length		Use Drill		Weight		Std. Pack
		in.	mm	in.	mm	in.	mm	oz.	g	
35765	921	9/32	7,1	1 3/16	30	1/8	3	1/4	7	1
35770	1021	5/16	7,9	1 3/16	30	1/8	3	1/2	14	1
35775	1121	11/32	8,7	1 3/16	30	1/8	3	1/2	14	1
35780	1221	3/8	9,5	1 3/16	30	1/8	3	1/2	14	1
35785	1321	13/32	10,0	1 3/16	30	3/16	5	1/2	14	1
35790	1421	7/16	11,1	1 3/16	30	3/16	5	3/4	21	1
35795	1521	15/32	11,9	1 3/16	30	3/16	5	3/4	21	1
35800	1621	1/2	12,7	1 3/16	30	3/16	5	1	28	1
35805	1721	17/32	13,5	1 3/16	30	1/4	6	1	28	1
35810	1821	9/16	14,3	1 3/16	30	1/4	6	1	28	1

Screw Extractor Sets



Model 10 Screw Extractor Set

Model 10 set contains 20 precision tools – one each of Extractor Models 1 to 5 inclusive with turnuts, drill Models 1 to 5 inclusive, and drill guides Models 921 to 1821 inclusive. Pre-formed plastic box provides convenient storage.

Cat. No.	Model No.	Description	Capacity		Weight		Std. Pack
			in.	mm	lb.	kg	
35585	10	Screw Extractor Set	1/4 - 1/2	6 - 13	1 1/4	0,6	1
35695	10	Box Only	-	-	3/10	0,16	1



Model 25 Screw and Pipe Extractor Set

Model 25 set contains one each of screw extractors Models 1 to 8 inclusive (Models 1 to 5 Extractors with turnuts); Drill Models 1 to 8 inclusive, and one Model 36; and complete set of drill guides and bushings. Maximum depth extractor range 1" to 3". Pipe extractors Models 80 to 85 also included. These precision tools are packed in a fitted compartment box.

Cat. No.	Model No.	Description	Capacity			Weight		Std. Pack
			Type	in.	mm	lb.	kg	
35590	25	Screw and Pipe Extractor Set	Screw Pipe	1/4 - 1 1/8 - 1	6 - 25 3 - 25	9 1/4	4,2	1
35700	25	Box Only	-	-	-	1	0,5	1