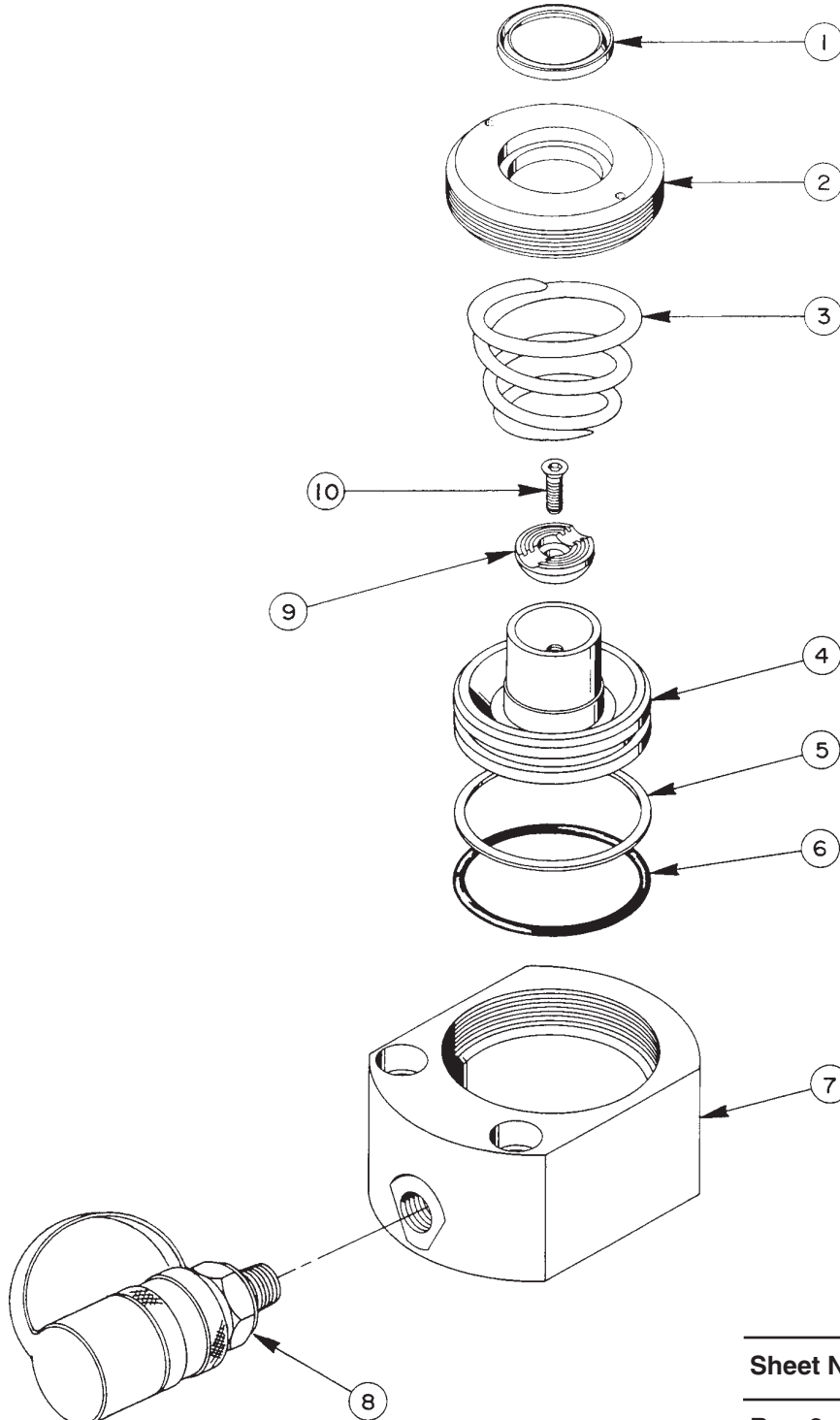


**SINGLE-ACTING, SPRING RETURN  
ELECTRIC HYDRAULIC PUMP**  
Max. Capacity: 79.5 Tons at 10,000 PSI



# Parts List, Form No. 100740, Back sheet 1 of 1

Item No.	Part No.	No. Req'd	Description
1	*212179	1	Rod Wiper
2	52633	1	Retainer (Torque to 500/525 in. lbs.)
3	306400	1	Compression spring
4	53396	1	Piston
5	*19171	1	Backup Washer (4-1/2 X 4-1/4 X .048, -244)
6	*10858	1	O-ring (4-1/2 X 4-1/4 X 1/8, -244)
7	52634	1	Cylinder Body
8	9796	1	Cylinder Half Coupler w/Dust Cap
9	309162	1	Piston Swivel Cap
10	215757	1	Flat Head Screw (1/4-20 X 1" Lg.; See note below)

### PARTS INCLUDED BUT NOT SHOWN

203908-CE	1	Warning Decal (For RLS750S-PFAFF)
*203908	1	Warning Decal
351915	1	Trade Name Decal
252184	1	Trade Name Decal (For RLS750S-PFAFF)

Part numbers marked with an asterisk (\*) are contained in Repair Kit No. 300459.

### NOTE:

1. Apply Loctite to 215757 Screw.
2. Insert screw into cap and tighten until snug.
3. Back off screw until cap is allowed to swivel 5 degrees in any direction.

Note: Shaded areas reflect last revision(s) made to this form.

Refer to any operating instructions included with this product for detailed information about operation, testing, disassembly, reassembly, and preventive maintenance.

Items found in this parts list have been carefully tested and selected. **Therefore: Use only genuine Power Team replacement parts!**

Additional questions can be directed to our Technical Services Department.