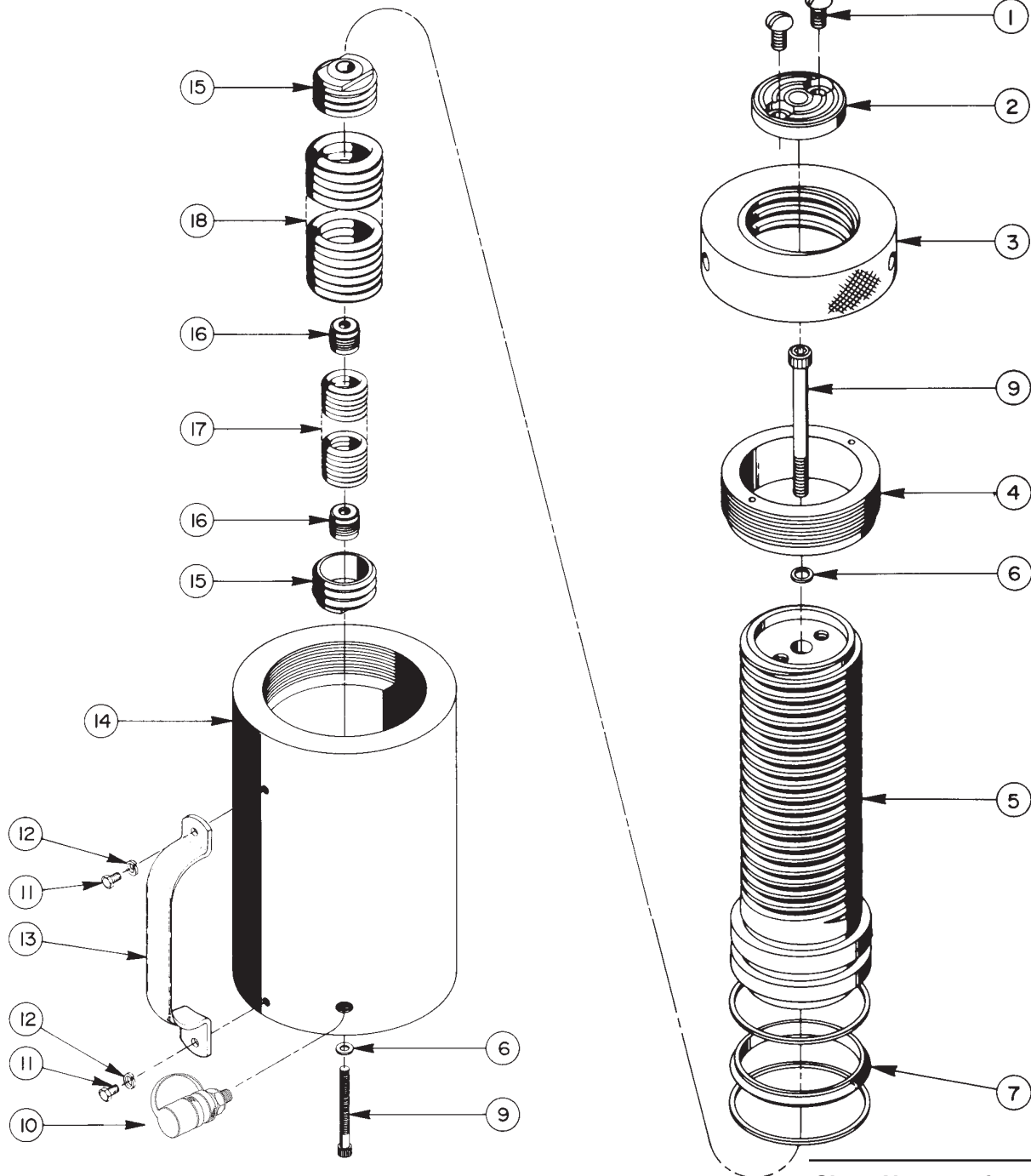


**MODEL B**  
**SINGLE-ACTING, SPRING RETURN**  
**HYDRAULIC CYLINDER**  
Max. Capacity: 103.1 Ton at 10,000 PSI



Note: Shaded areas reflect last revision(s) made to this form.

Sheet No. 1 of 1

Rev. 2

Date: 17 Dec. 1999

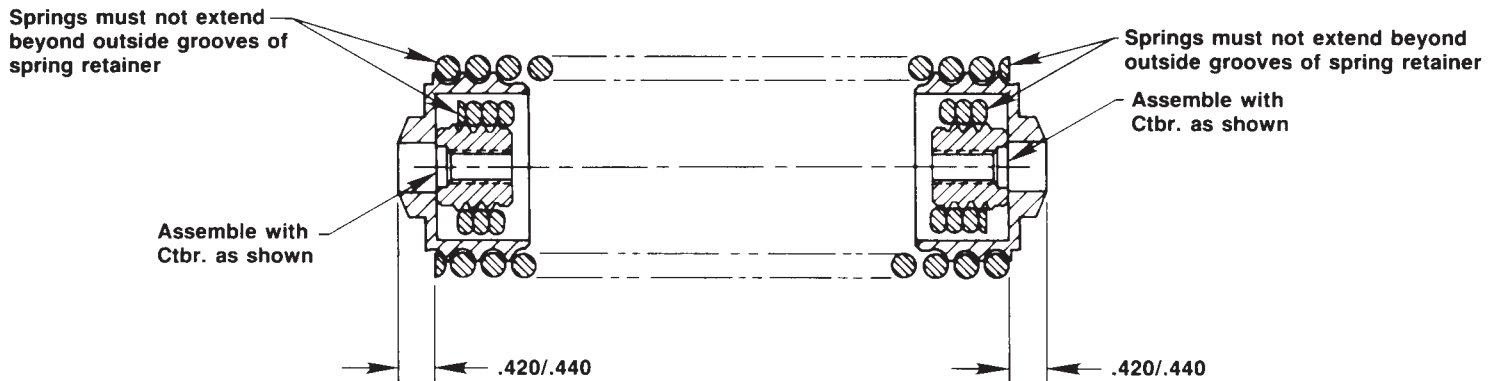
Item No.	Part No.	No. Req'd	Description
1	16112	2	Machine Screw (3/8-16 UNC X 3/4 Lg.)
2	302651	1	Front Plate
3	45642	1	Locking Ring
4	45643	1	Retainer Nut (Torque to 90/100 ft. lbs. wet or dry)
5	52205	1	Threaded Piston
6	*12042	2	Copper Washer (9/16 X 3/8 X 1/32)
7	*19207	1	T-seal & Backup Rings (Smooth side of Backup Ring must be against seal.)
9	16110	2	Cap Screw (9/16 X 3/8 X 1/32; Torque to 400/425 in. lbs.)
10	9796	1	Ram Half Coupler w/ Plastic Dust Cap
11	10005	2	Cap Screw (1/4-20 UNC X 1/2 Lg.)
12	10244	2	Lockwasher (For 1/4 bolt)
13	35903BK2	1	Handle
14	52342	1	Cylinder Body
15	36084	2	Spring Retainer
16	201417	2	Spring Retainer
17	201475	1	Extension Spring
18	201474	1	Extension Spring

**PARTS INCLUDED BUT NOT SHOWN**

200056	1	Locknut Handle
251139	1	Trade Name Decal
*304937	1	Warning Decal
*37782	1	Warning Decal

Part numbers marked with an asterisk (\*) are contained in Repair Kit No. 300396.

**SPRING & RETAINER ASSEMBLY**



Refer to any operating instructions included with this product for detailed information about operation, testing, disassembly, reassembly, and preventive maintenance.

Items found in this parts list have been carefully tested and selected. **Therefore: Use only genuine Power Team replacement parts!**

Additional questions can be directed to our Technical Services Department.

Note: Shaded areas reflect last revision(s) made to this form.