

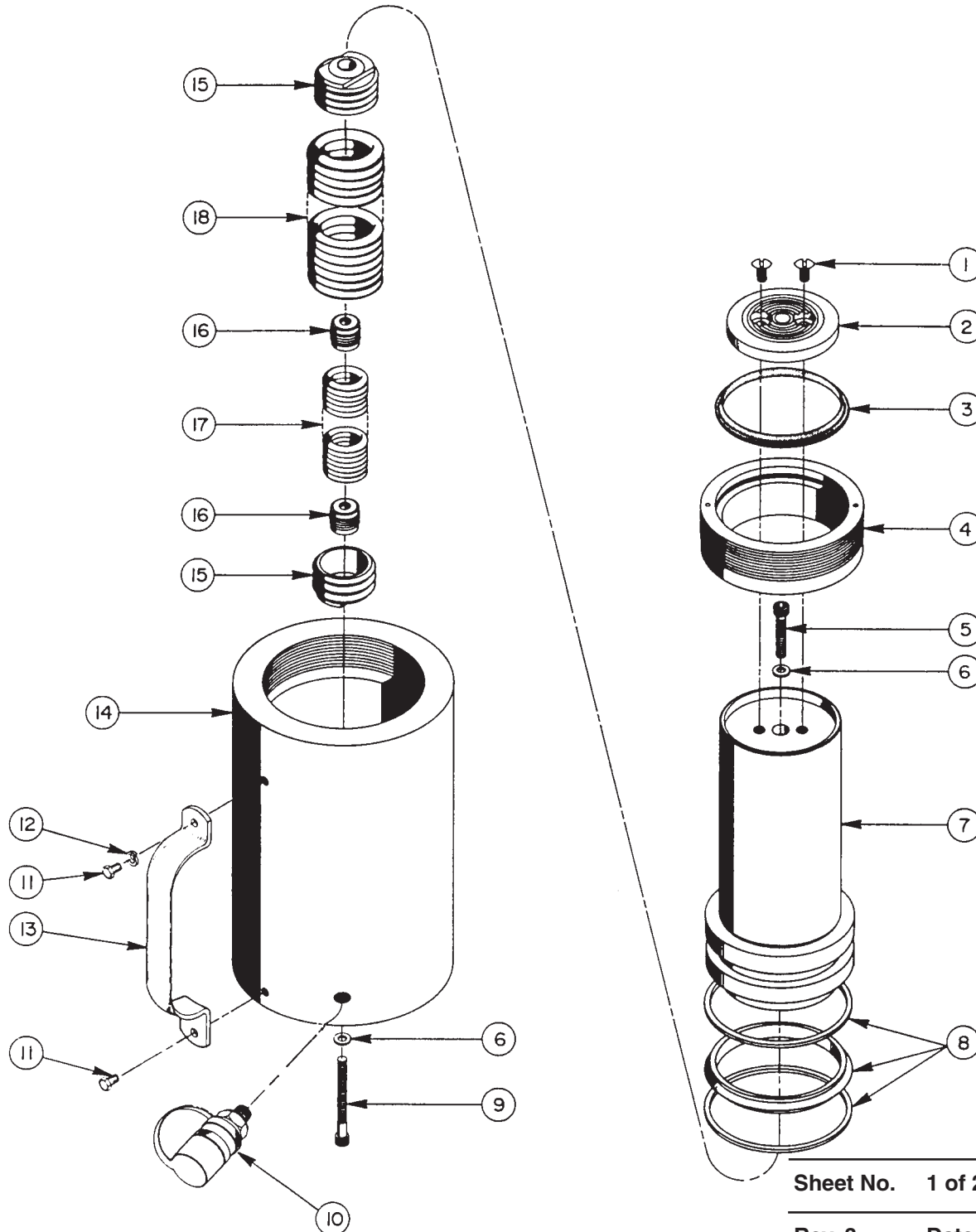
Parts List for:

3RA1002S
3RA1006S
RA1002
RA1002K

RA1006
RA1006-FEC
RA1006-IMT

MODEL B
SINGLE-ACTING, SPRING RETURN
HYDRAULIC CYLINDER

Max. Capacity: 103.1 Tons (931,2 kN) at 10,000 PSI (700 Bar)



Sheet No. 1 of 2

Rev. 3

Date: 28 June 1999

Parts List, Form No. 100613, Back sheet 1 of 2

Item No.	Part No.	No. Req'd	Description	Item No.	Part No.	No. Req'd	Description
1	16112	2	Mach. Screw (3/8-16 UNC x 3/4 Lg.)				3RA1006S)
2	302651	1	Front Plate	15	36084	2	Spring Retainer (See detail on page 2 of 2)
3	*16113	1	Rod Wiper	16	201417	2	Spring Retainer (See detail on page 2 of 2)
4	44122	1	Retainer Nut (Torque to 90/100 ft. lbs. wet or dry)	17	201475	1	Extension Spring (For RA1006, RA1006-FEC, RA1006-IMT & 3RA1006S; See diagram on page 2 of 2)
5	11531	1	Cap Screw (3/8-16 UNC x 2" Lg.; Torque to 400/425 in. lbs.)				
6	*12042	2	Copper Washer (9/16 x 3/8 x 1/32)		208141	1	Extension Spring (For RA1002, RA1002K & 3RA1002S; See diagram on page 2 of 2)
7	†52462	1	Piston Rod (For RA1002, 3RA1002S & RA1002K)	18	201474	1	Extension Spring (For RA1006, RA1006-FEC, RA1006-IMT & 3RA1006S; See diagram on page 2 of 2)
	†52460	1	Piston Rod (For RA1006, 3RA1006S, RA1006-FEC & RA1006-IMT)				
8	*19207	1	T-Seal & Backup Rings (Smooth side of Backup Ring must be against seal.)		208140	1	Extension Spring (For RA1002, RA1002K & 3RA1002S; See diagram on page 2 of 2)
9	16110	1	Cap Screw (3/8-16 UNC x 3-1/2 Lg.; Torque to 400/425 in. lbs.; For RA1006, RA1006-FEC, RA1006-IMT & 3RA1006S)				
	11531	1	Cap Screw (3/8-16 UNC x 2" Lg.; Torque to 400/425 in. lbs.; For RA1002, RA1002K & 3RA1002S)				
10	9796	1	Ram Half Coupler (For RA1002, RA1002K, RA1006 & RA1006-FEC)				
	210916	1	Ram Half Coupler (For 3RA1002S & 3RA1006S)				
	251616	1	Coupler (For RA1006-IMT)				
11	10005	2	Cap Screw (1/4-20 UNC x 1/2 Lg.; For 3RA1006S, RA1006, RA1006-FEC & RA1006-IMT)				
12	10244	2	Lockwasher (For 3RA1006S, RA1006, RA1006-FEC & RA1006-IMT)				
13	35903BK2	1	Handle (For RA1006, RA1006-FEC, RA1006-IMT & 3RA1006S)				
	420498BK2	1	Handle (For RA1002K)				
14	†52463	1	Cylinder Body (For RA1002, RA1002K & 3RA1002S)				
	†52342	1	Cylinder Body (For RA1006, RA1006-FEC, RA1006-IMT &				

PARTS INCLUDED BUT NOT SHOWN

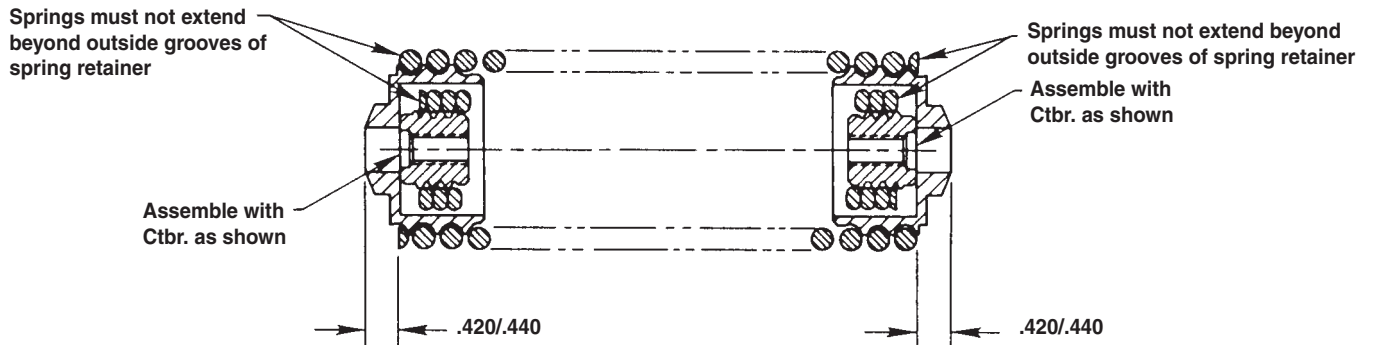
*203908	1	Warning Decal (For RA1002 & 3RA1002S)
37782	1	Warning Decal (For RA1006, RA1006-FEC, RA1006-IMT & 3RA1006S)
251138	1	Trade Name Decal (For RA1006 & RA1006-FEC)
305670	1	Trade Name Decal (For RA1002)
305255	1	Trade Name Decal (For 3RA1002S)
305256	1	Trade Name Decal (For 3RA1006S)
9682	1	Straight Fitting (For RA1006-FEC & RA1006-IMT)
9681	2	Street Elbow Fitting (3/8 NPTF; For RA1006-FEC)
9575	1	Shut-off Valve (For RA1006-FEC)

Part numbers marked with an asterisk (*) are contained in Repair Kit No. 300444.

(†) If damage occurs to either the piston rod or cylinder body, both parts should be replaced.

Note: Shaded areas reflect last revision(s) made to this form.
Also, removed item #2110061.

SPRING & RETAINER ASSEMBLY



Refer to any operating instructions included with this product for detailed information about operation, testing, disassembly, reassembly, and preventive maintenance.

Items found in this parts list have been carefully tested and selected. **Therefore: Use only genuine Power Team replacement parts!**

Additional questions can be directed to our Technical Services Department.