

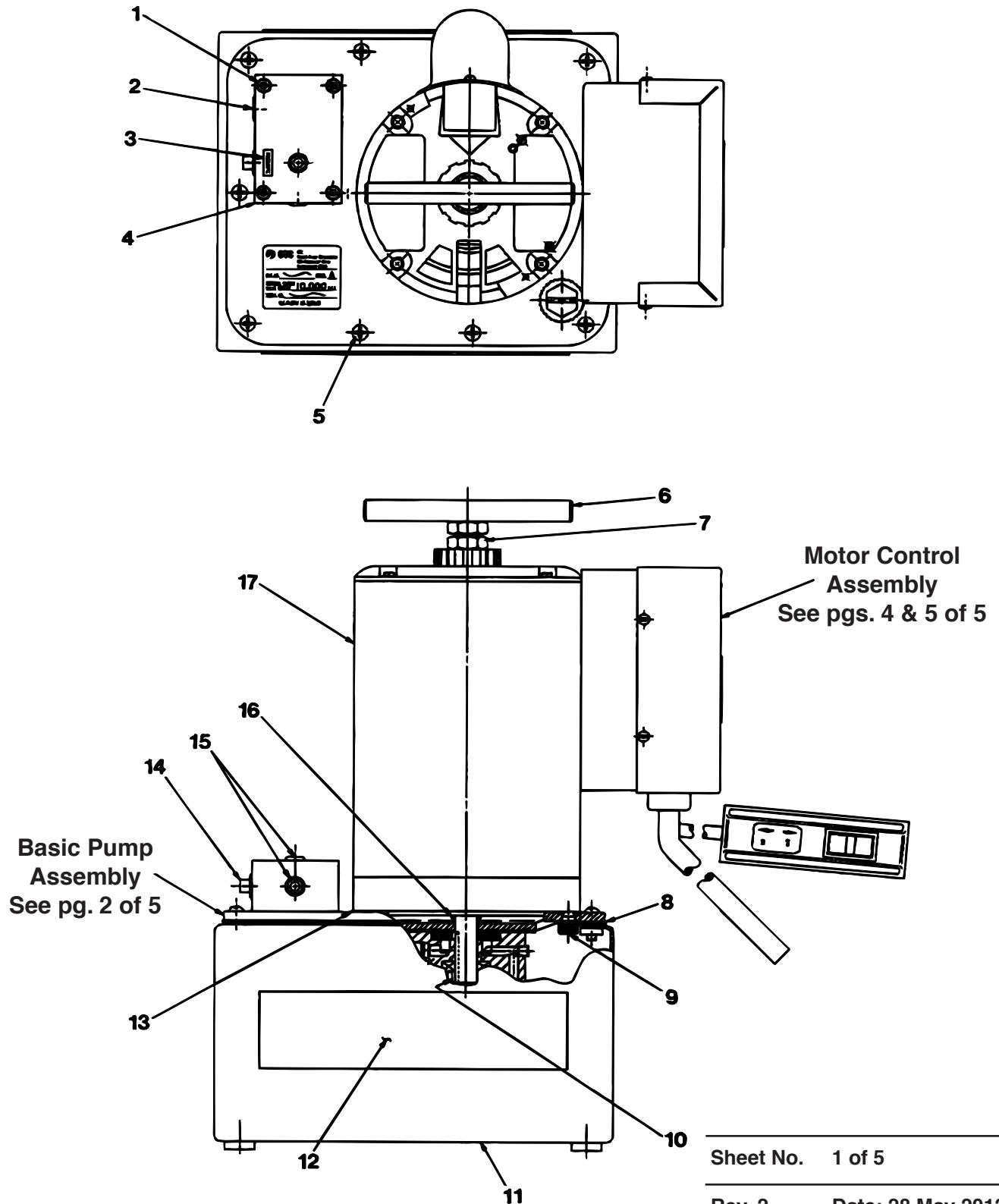
SPX Hydraulic Technologies  
 5885 11th Street  
 Rockford, IL 61109-3699 USA  
**powerteam.com**

Tech. Services: (800) 477-8326  
 Fax: (800) 765-8326  
 Order Entry: (800) 541-1418  
 Fax: (800) 288-7031

Parts List for:

**PE460A-50-220**  
**PE460A-ABC**

## ELECTRIC HYDRAULIC PUMP

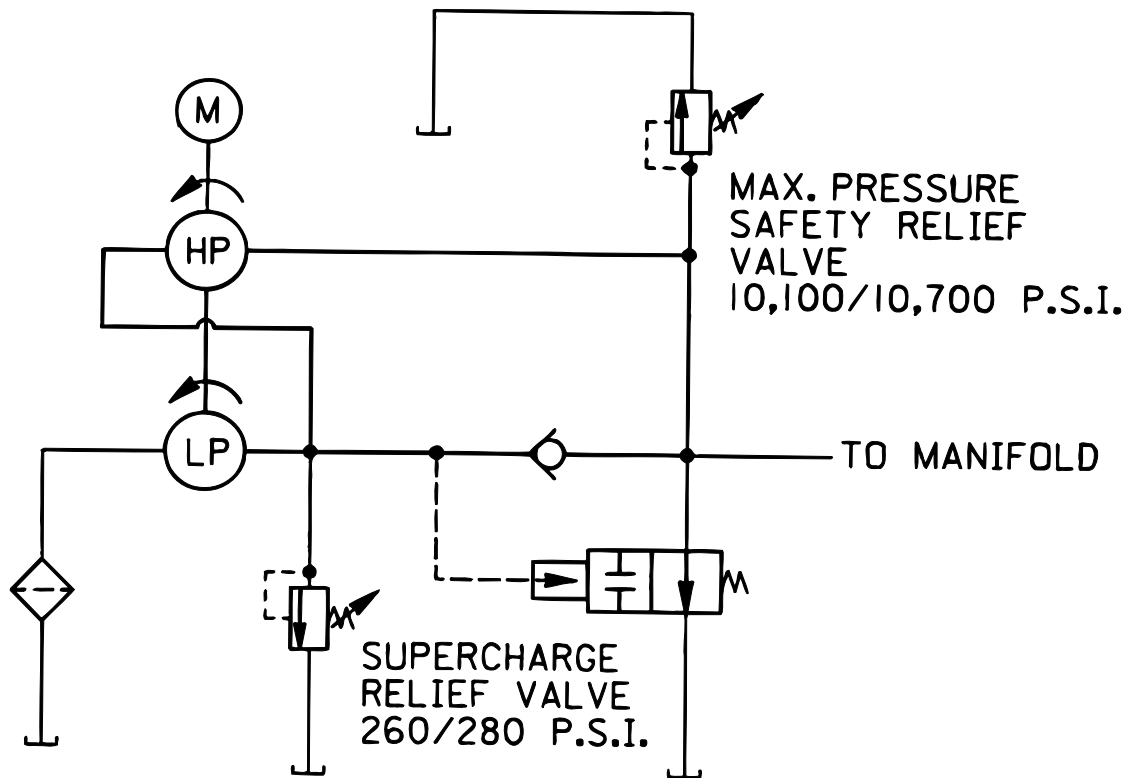


Sheet No. 1 of 5

Rev. 2 Date: 28 May 2012

Item No.	Part No.	No. Req'd	Description
1	10022	4	Hex. Soc. Hd. Cap Screw (1-1/4-20 x 1-1/2 Lg.)
2	10909	1	Plug Fitting (3/8 NPTF)
3	201747	1	Decal (Pressure)
4	45911	1	Manifold
5	10177	10	Machine Screw (1/4-20 UNC x 3/4 Lg.)
6	203146	1	T-handle
7	10394	1	Hex. Nut (5/8-18 UNF)
8	47409	1	Reservoir Gasket
9	10050	4	Cap Screw (3/8-16 UNC x 1" Lg.; Torque to 90/100 in. lbs.)
10	214097	1	Key
11	40063OR9	1	Reservoir
12	309219	2	Trade Name Decal
13	307425	1	Motor Base Gasket
14	13273	1	Plug Fitting (3/8 NPTF)
15	10479	2	Plug Fitting (1/4 NPTF)
16	213674	1	Shaft Seal V-ring
17	53104	1	Electric Motor

### HYDRAULIC SCHEMATIC

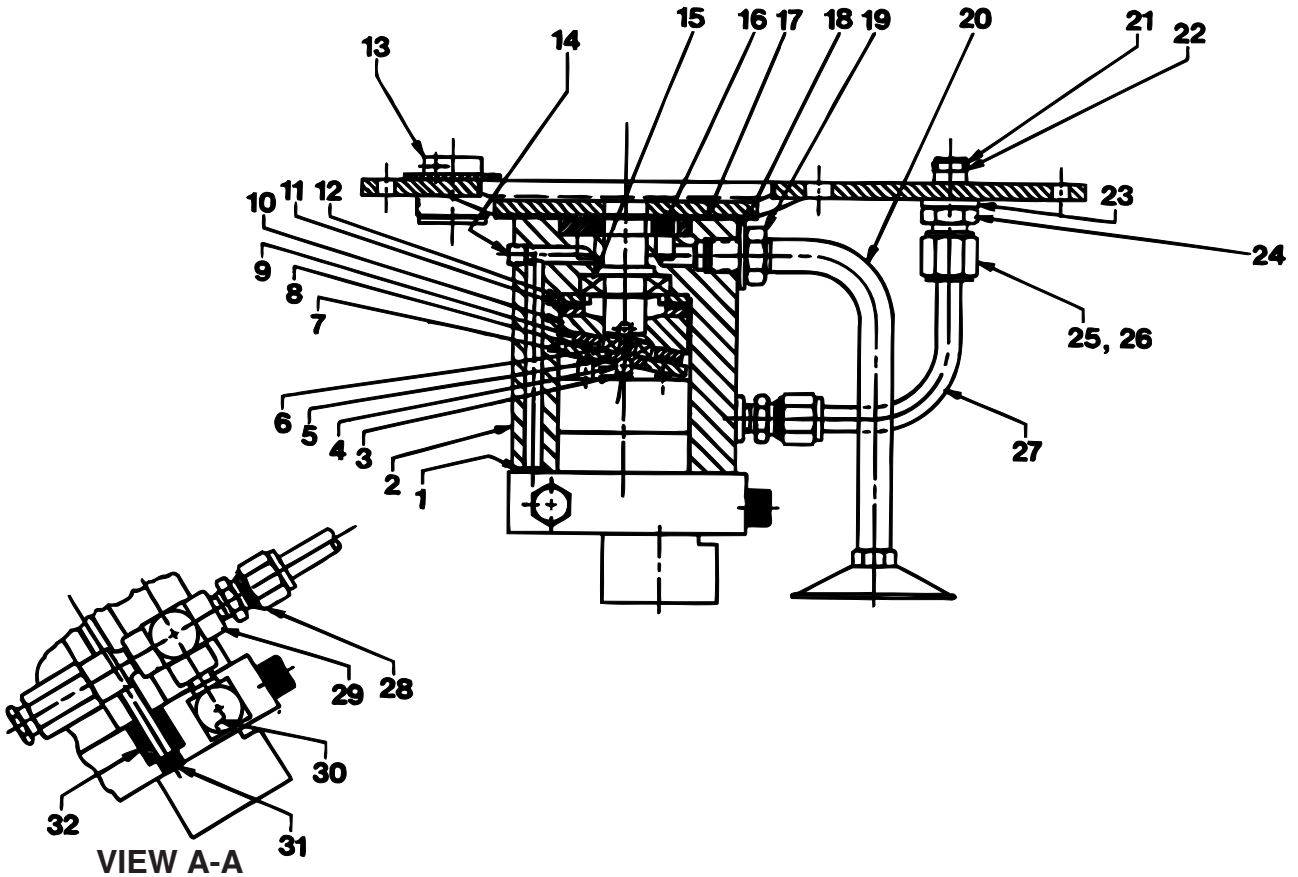


Refer to any operating instructions included with the product for detailed information about operation, testing, disassembly, reassembly, and preventive maintenance.

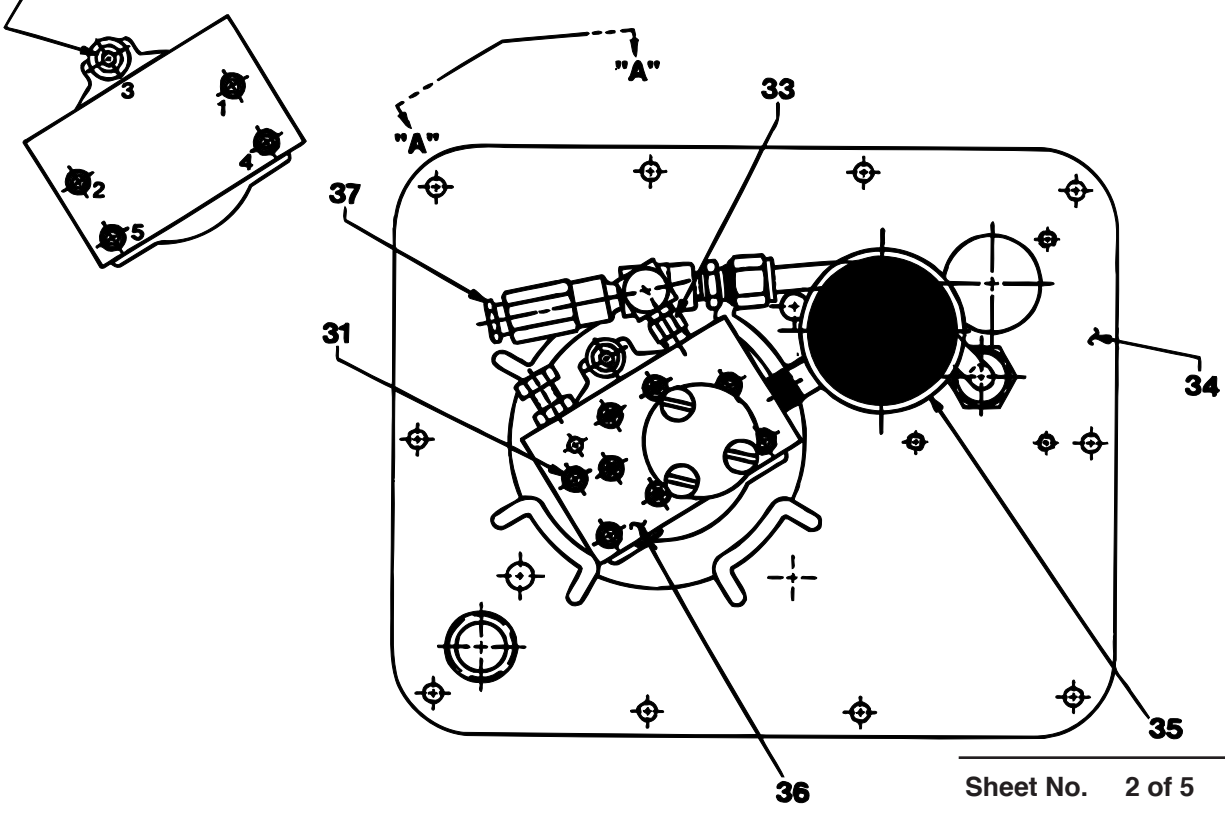
Items found in this parts list have been carefully tested and selected. **Therefore: Use only genuine Power Team replacement parts!**

Additional questions can be directed to our Technical Services Departments.

### BASIC PUMP ASSEMBLY



Cross torque in 20/30 in. lbs.  
increments in order shown.



# Parts List, Form No. 100825, Back sheet 2 of 5

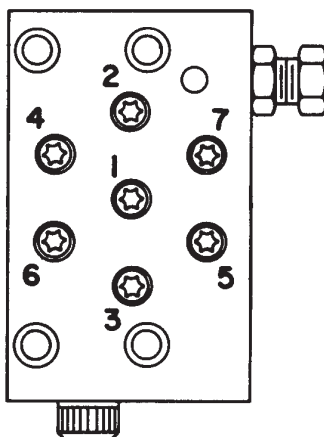
Item No.	Part No.	No. Req'd	Description
1	10267	1	O-ring (7/16 x 5/16 x 1/16)
2	52883	1	Pump Body
3	16320	1	Compression Spring
4	10375	1	Steel Ball (1/4 dia.)
5	23547	1	Top Plate Bearing
6	11814	1	Ball Bearing
7	23548	1	Top Plate
8	15431	1	Needle Thrust Bearing
9	15432	1	Needle Thrust Race Bearing
10	35271	1	Angle Plate
11	11228	1	Needle Thrust Bearing
12	11227	2	Needle Thrust Race Bearing
13	213706	1	Filler Cap
14	11084	1	Pipe Plug (1/16 NPTF; Torque to 35/45 in. lbs. oiled)
15	15695	1	Ball Bearing
16	15693	1	Gerotor Set
17	307296	1	Wear Plate
18	213709	1	Seal Washer (Turn on - Do not push on)
19	10390	1	Hex. Jam Nut (1/2-20 UNF)
20	213686	1	Intake Tube
21	10268	1	O-ring (1/2 x 3/8 x 1/16)
22	11863	1	Backup Washer (PTFE)
23	21484	1	Washer
24	214882	1	Valve Connector (NOTE: Torque valve connector (#24) to 20/30 ft. lbs. into cover plate (#34). Hold valve connector and torque tube nut (#26) to 40/50 ft. lbs.)
25	10430	1	Sleeve Tube (For 3/8 tube)
26	10431	1	Tube Nut (5/8-18 UNF)
27	308614	1	Tube (oil line)
28	12696	1	Straight Fitting
29	215033	1	Tee Fitting
30	24730	1	Elbow Fitting
31	15642	5	Soc. Hd. Cap Screw (1/4-20 UNC x 5" Lg.; Torque to 55/65 in. lbs.)
32	214720	1	Spacer
33	11421	1	Straight Nipple Fitting
34	61566BK2	1	Reservoir Cover
35	29682	1	Filter Strainer
36	36925	1	High Pressure Pump Assembly (See sheet 3 of 5)
37	21278	1	Relief Valve (Set at 10,100/10,700 PSI)



Item No.	Part No.	No. Req'd	Description
1	*16747	7	Torx Drive Cap Screw (1/4-28 x 1-3/4 Lg.; See diagram below)
2	*36911	1	Pump End Plate
3	*24549	4	Valve Guide
4	*10445	4	Compression Spring (5/32 O.D. x 3/4 Lg.)
5	*12223	4	Steel Ball (3/16 dia.)
6	*20775	2	Piston
7	*41006	1	Pump Barrel
8	*41007	1	Valve Head
9	200797	1	Adjusting Screw
10	10386	1	Jam Nut (3/8-24 UNF)
11	15691	1	Compression Spring (1/4 O.D. x 5/8 Lg.)
12	200796	1	Spring & Ball Adapter
13	10375	2	Steel Ball (1/4 dia.)
14	201998	1	Sleeve
15	12571	1	Roll Pin (1/8 dia. x 1-3/8 Lg.)
16	15129	1	Compression Spring (3/16 O.D. x 7/8 Lg.)
17	12042	1	Copper Washer (9/16 x 3/8 x 1/32)
18	29690	1	Cap Screw (Torque to 180 in. lbs.)
19	10442	1	Copper Washer (3/8 x 1/4 x 1/32)
20	201995	1	Cap Screw (Torque to 80/90 in. lbs.)
21	10419	1	Steel Ball (5/32 dia.)
22	16465	1	Compression Spring (5/8 O.D. x 3/4 Lg.)
23	202088	1	Piston
24	308613	1	Valve Cylinder
25	214941	3	Machine Screw (1/4-20 x 1-1/2 Lg.)
26	10264	1	O-ring (1/4 x 1/8 x 1/16)
27	10427	1	Pipe Plug (1/8 NPTF)

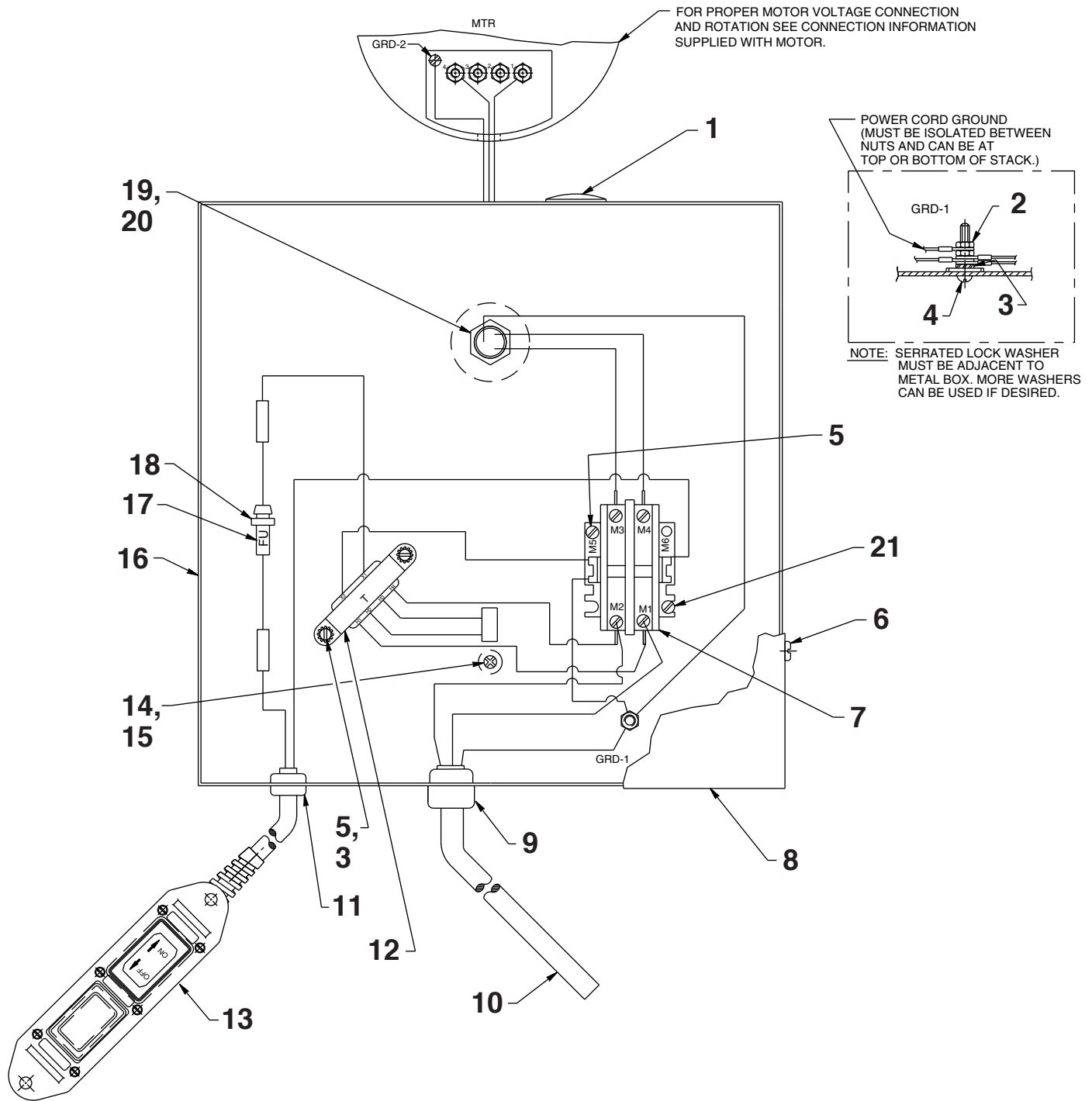
Consult the factory when replacing items marked with an asterisk (\*).

### BOLT TIGHTENING SEQUENCE



**NOTE: Assemble in sequence shown. Lubricate under head and on threads. Torque to 170 in. lbs.**

# MOTOR CONTROL ASSEMBLY



(For PE460A-50-220)

# Parts List, Form No. 100825, Back sheet 4 of 5

Item No.	Part No.	No. Req'd	Description
1	17782	1	Snap Button
2	10197	2	Hex. Nut (#10-24 UNC)
3	11108	3	Lockwasher (#10 External Tooth)
4	11856	1	Machine Screw (#10-24 x 1" Lg.)
5	11539	2	Machine Screw (#10-24 x 1/4 Lg.)
6	14812	4	Screw (#8-18 x 3/8 Lg.)
7	420718-4	1	Contact
8	43126GY5	1	Control Box Cover
9	210112	1	Strain Relief Bushing
10	308752	8.5 ft.	Cord (14/3 SJTO)
11	15993	1	Strain Relief Bushing
12	305665	1	Transformer
13	25017	1	Remote Control Hand Switch (See Form No. 101644)
14	13532	1	Self-tapping Screw (#8-32 x 3/8 Lg.)
15	206857	1	Washer
16	51218GY5	1	Control Box Body
17	206962	1	Fuse (3A)
18	16887	1	Fuseholder
19	11202	1	Connector
20	212434	1	Washer
21	11539	2	Machine Screw (#10-24 UNC X 1/4 Lg.)

### PARTS INCLUDED BUT NOT SHOWN

200188 1 Warning Decal

## ELECTRICAL SCHEMATIC (For PE460A-50-220)

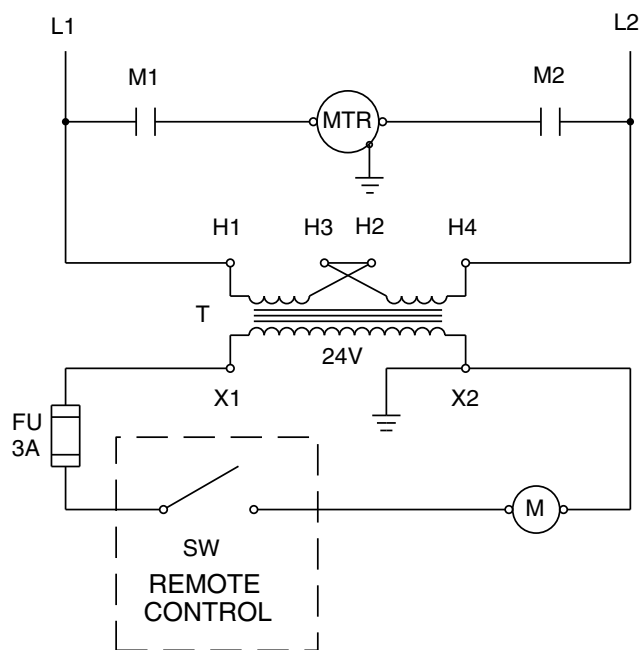


### WARNING

To help avoid personal injury, all electrical work must be done by a qualified electrician.

#### North American & International Color Codes:

Conductors	North American	International
Line	Black	Brown
Neutral	White	Blue
Ground	Green	Green/Yellow



#### NOTE:

UNLESS OTHERWISE SPECIFIED ALL UNITS ARE TO BE WIRED FOR 220 V.-50 HZ. (CCW ROTATION FROM LEAD END)

TRANSFORMER CONNECTIONS ARE AS SHOWN FOR 220 V.- 50 HZ.

FOR 110 V.- 50 HZ. UNITS , TRANSFORMER CONNECTIONS TO BE AS FOLLOWS:

H1 & H3 TO L1  
H2 & H4 TO L2

### 110/220 V., 50 Hz., Single Phase

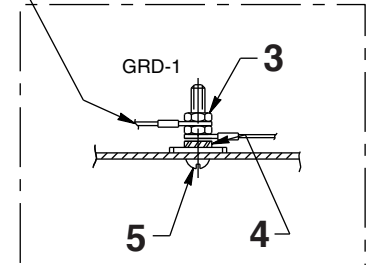
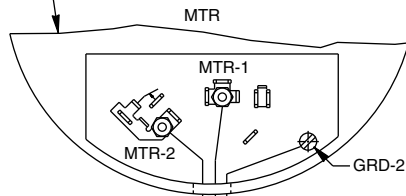
Note: Shaded areas reflect last revision(s) made to this form.



# MOTOR CONTROL ASSEMBLY (For PE460A-ABC)

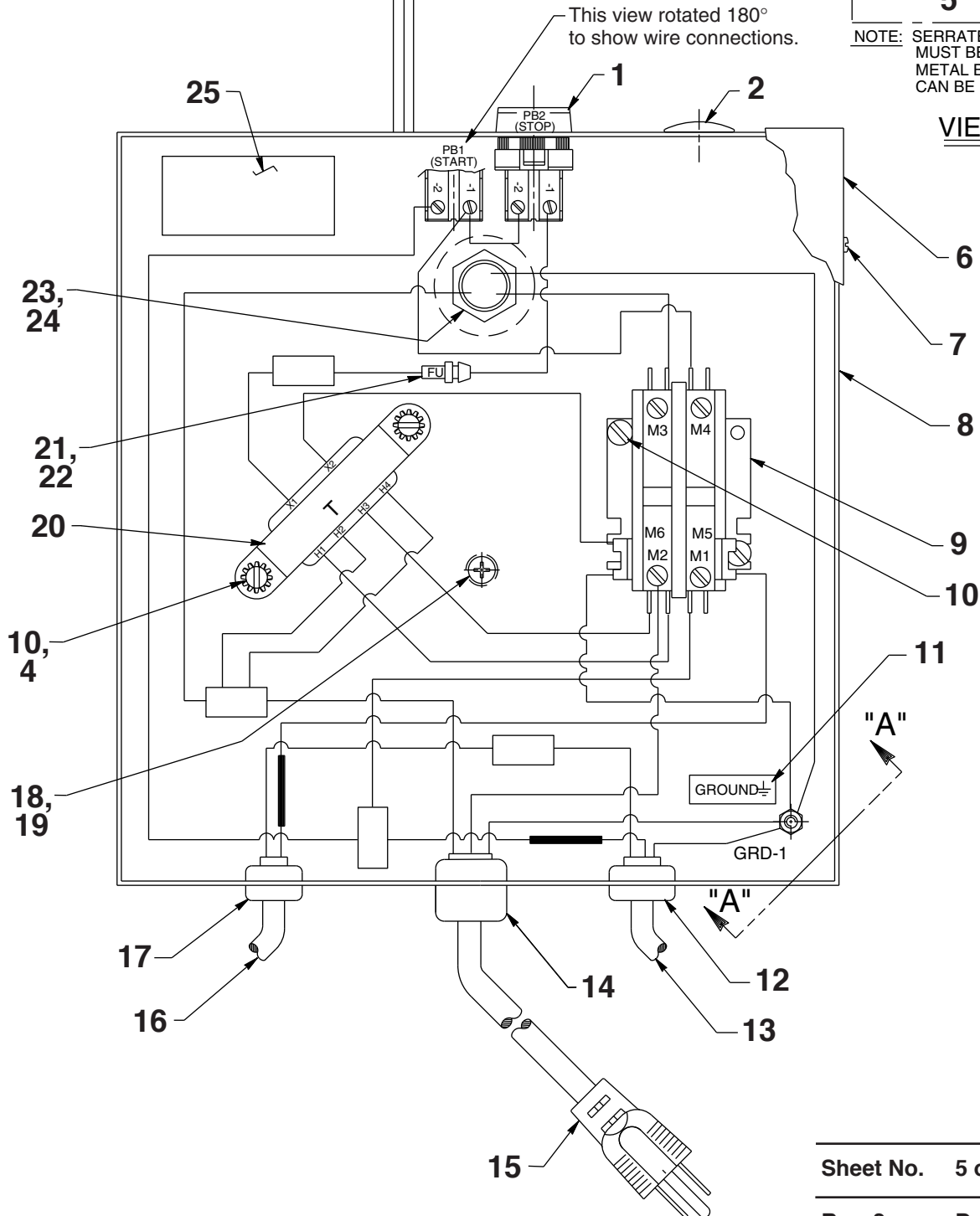
FOR PROPER MOTOR VOLTAGE CONNECTION AND ROTATION SEE CONNECTION INFORMATION SUPPLIED WITH MOTOR.

POWER CORD GROUND (MUST BE ISOLATED BETWEEN NUTS AND CAN BE AT TOP OR BOTTOM OF STACK.)



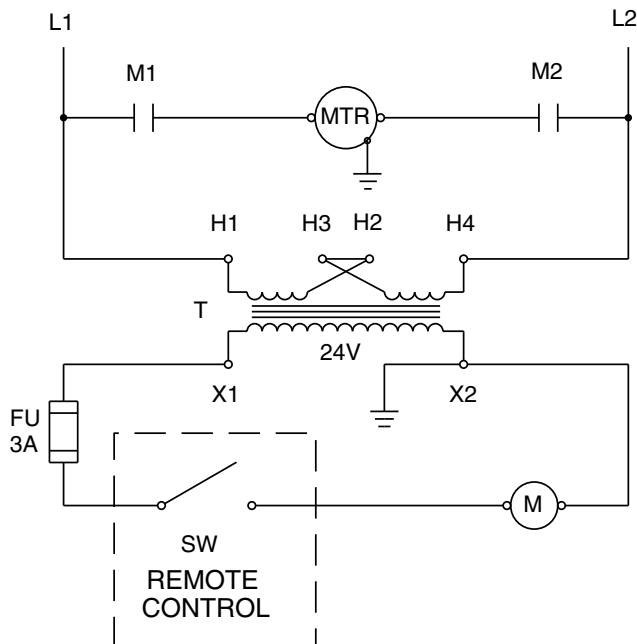
NOTE: SERRATED LOCK WASHER MUST BE ADJACENT TO METAL BOX. MORE WASHERS CAN BE USED IF DESIRED.

VIEW "A-A"



Item No.	Part No.	No. Req'd	Description
1	309019	1	Pushbutton Switch
2	17782	1	Snap Plug
3	10197	2	Hex Nut (10-24)
4	11108	3	Washer
5	11856	1	Screw (10-24 x 1" Lg.)
6	43126WH2	1	Control Box Cover
7	14812	4	Screw (8-18 x 3/8 Lg.)
8	51218WH2	1	Electrical Control Box
9	420718-4	1	Contactor
10	11539	4	Screw (10-24 x 1/4 Lg.)
11	205189	1	Ground Decal
12	15933	1	Strain Relief Bushing
13	12908	3 ft.	Cable (18/3 SJTO)
14	210112	1	Strain Relief Bushing
15	307440	1	Cord Set (8' lg.; 115 V.; 12/3 SJTO)
16	52203	1	Pressure Control
17	215857	1	Strain Relief Bushing
18	13532	1	Screw (8-32 x 1/2 Lg.)
19	206857	1	Special Washer
20	305665	1	Transformer
21	250442	1	Fuse (1.25 AMP, 250 V.)
22	16887	1	Fuse Holder
23	11202	1	Nipple
24	212434	1	Plain Washer
25	250440	1	Fuse Holder

### ELECTRICAL SCHEMATIC (For PE460A-ABC) 110/220 V., 50 Hz., Single Phase



#### **WARNING**

To help avoid personal injury, all electrical work must be done by a qualified electrician.

North American & International Color Codes:

Conductors	North American	International
Line .....	Black .....	Brown
Neutral .....	White .....	Blue
Ground .....	Green .....	Green/Yellow

#### NOTE:

UNLESS OTHERWISE SPECIFIED ALL UNITS ARE TO BE WIRED FOR 220 V.-50 HZ. (CCW ROTATION FROM LEAD END)

TRANSFORMER CONNECTIONS ARE AS SHOWN FOR 220 V.- 50 HZ.

FOR 110 V.- 50 HZ. UNITS , TRANSFORMER CONNECTIONS TO BE AS FOLLOWS:

H1 & H3 TO L1  
H2 & H4 TO L2

Note: This page added at last revision to this form.