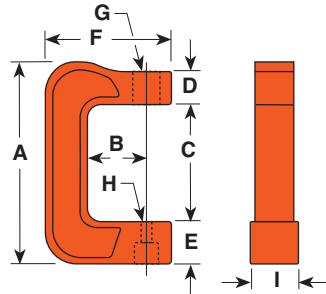


# C-CLAMPS

## Hydraulic Accessories

- In 5, 10 and 25 ton capacities. For use with Power Team general purpose single-acting series cylinders of comparable capacity.
- For clamping, pressing and bending. Ideal for welding and metal fabrication for fit-up of sheet or plate steel.
- Clamps withstand full rated capacity of the cylinders for which they are intended.
- To minimize the effects of off-center loading, the CC5, CC10 and CC25 should be used with the optional 350144 and 350145 swivel caps.

Items pictured are:  
**CC10**  
**C104C**  
**201923**



### "C" CLAMPS

5, 10 & 25  
 TONS



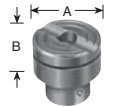
CC10

A (in.)	B (in.)	C (in.)	D (in.)	E (in.)	F (in.)	G (in.)	H (in.)	I (in.)	Weight (lb.)	Cap. (tons)	Order Number (C-Clamp only)	Use With Cyl. No.
12 <sup>3</sup> / <sub>8</sub>	3 <sup>3</sup> / <sub>4</sub>	7 <sup>5</sup> / <sub>16</sub>	2	2 <sup>1</sup> / <sub>2</sub>	7 <sup>3</sup> / <sub>4</sub>	1 <sup>1</sup> / <sub>2</sub> "-16 UN	<sup>7</sup> / <sub>8</sub>	3	25	5	CC5	C51C-C57C
15 <sup>7</sup> / <sub>8</sub>	6	9 <sup>9</sup> / <sub>16</sub>	2	3	10 <sup>3</sup> / <sub>4</sub>	2 <sup>1</sup> / <sub>4</sub> "-14 UNS	<sup>7</sup> / <sub>8</sub>	3 <sup>1</sup> / <sub>2</sub>	50	10	CC10	C101C-C1010C
21	6	13	3	4	12 <sup>2</sup> / <sub>16</sub>	3 <sup>1</sup> / <sub>16</sub> "-12 UNS	1 <sup>7</sup> / <sub>16</sub>	4 <sup>5</sup> / <sub>8</sub>	96	25	CC25	C251C-C2514C

### OPTIONAL ACCESSORIES FOR USE

#### WITH CC5, CC10 & CC25 HYDRAULIC CLAMPS

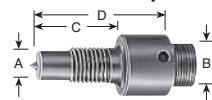
#### Swivel Caps



5/10 ton  
 350144\*  
 A-1<sup>3</sup>/<sub>8</sub>"  
 B-3<sup>3</sup>/<sub>4</sub>"

25 ton  
 350145  
 A-2"  
 B-1"

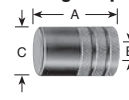
#### Threaded Adapters



10 ton  
 38597  
 A-1 - 8  
 B-1 - 8  
 C-3<sup>3</sup>/<sub>4</sub>"  
 D-2"

25 ton  
 38953  
 A-1<sup>1</sup>/<sub>4</sub>-7  
 B-1<sup>1</sup>/<sub>2</sub>-16  
 C-2<sup>3</sup>/<sub>4</sub>"  
 D-4<sup>3</sup>/<sub>8</sub>"

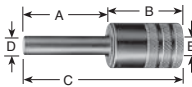
#### Pushing Adapters



10 ton  
 28228\*\*  
 A-2<sup>3</sup>/<sub>8</sub>"  
 B-1 - 8  
 C-1<sup>1</sup>/<sub>2</sub>"

25 ton  
 28229\*\*  
 A-2<sup>7</sup>/<sub>8</sub>"  
 B-1<sup>1</sup>/<sub>4</sub>-7  
 C-1<sup>3</sup>/<sub>4</sub>"

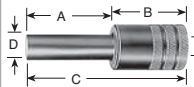
#### Pushing Adapters



10 ton  
 201923\*\*  
 A-3<sup>1</sup>/<sub>8</sub>"  
 B-2<sup>1</sup>/<sub>4</sub>"  
 C-5<sup>3</sup>/<sub>8</sub>"  
 D-1<sup>1</sup>/<sub>2</sub>"  
 E-1 - 8

25 ton  
 34510\*\*  
 A-3<sup>1</sup>/<sub>4</sub>"  
 B-2<sup>5</sup>/<sub>8</sub>"  
 C-5<sup>7</sup>/<sub>8</sub>"  
 D-3<sup>3</sup>/<sub>4</sub>"  
 E-1<sup>1</sup>/<sub>4</sub>-7

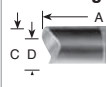
#### Pushing Adapters



10 ton  
 201454\*\*  
 A-3<sup>1</sup>/<sub>16</sub>"  
 B-2<sup>5</sup>/<sub>8</sub>"  
 C-5<sup>11</sup>/<sub>16</sub>"  
 D-3<sup>3</sup>/<sub>4</sub>"  
 E-1 - 8

25 ton  
 34511\*\*  
 A-3<sup>1</sup>/<sub>4</sub>"  
 B-2<sup>5</sup>/<sub>8</sub>"  
 C-5<sup>7</sup>/<sub>8</sub>"  
 D-1"  
 E-1<sup>1</sup>/<sub>4</sub>-7

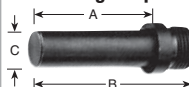
#### V Pushing Adapters



10 ton  
 34806\*\*  
 A-2<sup>5</sup>/<sub>8</sub>"  
 B-1 - 8  
 C-1<sup>1</sup>/<sub>2</sub>"  
 D-1"

25 ton  
 34807\*\*  
 A-3<sup>1</sup>/<sub>8</sub>"  
 B-1<sup>1</sup>/<sub>4</sub>-7  
 C-1<sup>3</sup>/<sub>4</sub>"  
 D-1<sup>1</sup>/<sub>4</sub>"

#### Pushing Adapters



5 ton  
 309874\*  
 A-2<sup>1</sup>/<sub>32</sub>"  
 B-2<sup>25</sup>/<sub>32</sub>"  
 C-5<sup>7</sup>/<sub>8</sub>"

\* May be used with CC5  
 \*\* Must be used with a threaded adapter.

