

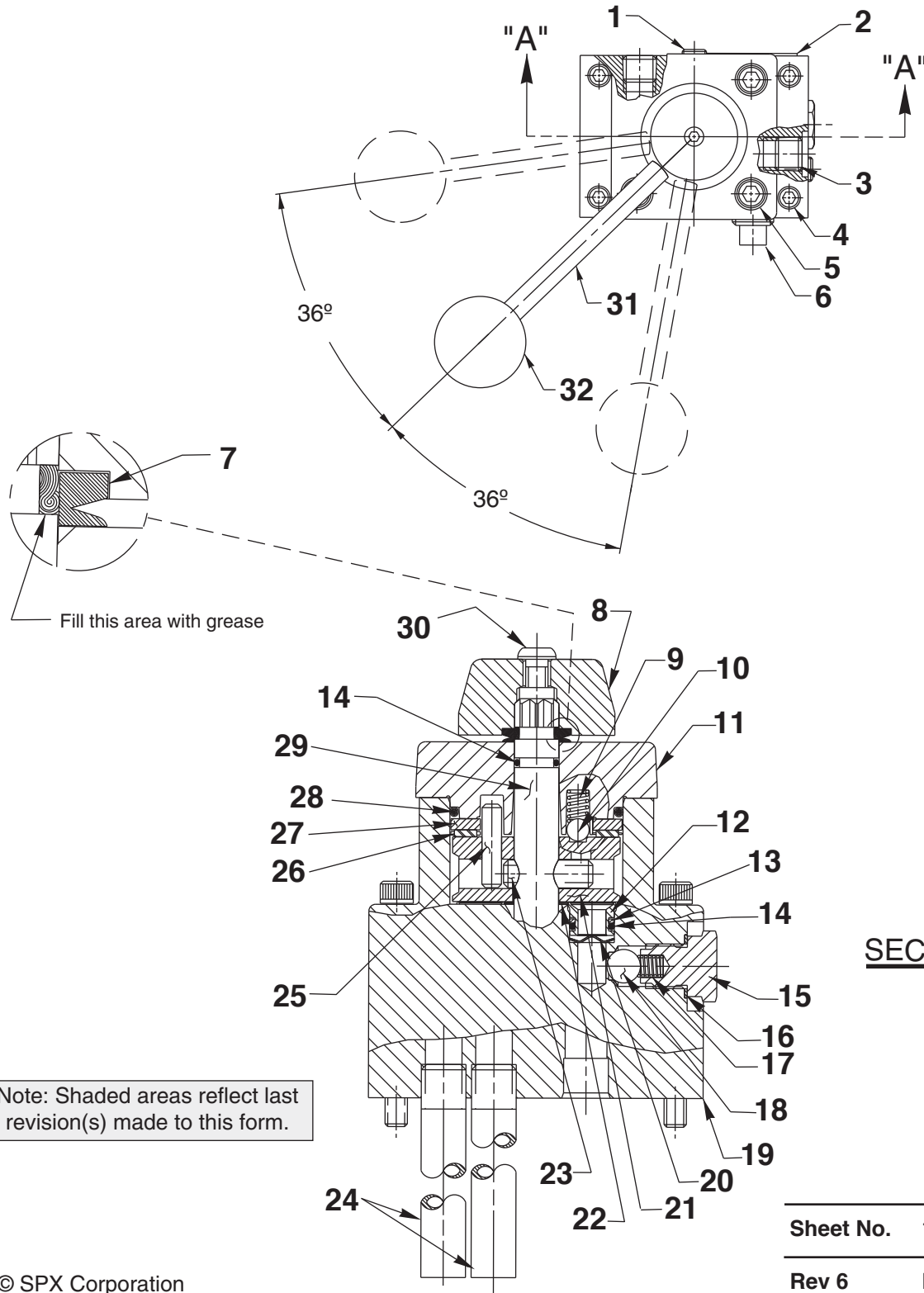
SPX Hydraulic Technologies
 5885 11th Street
 Rockford, IL 61109-3699 USA
powerteam.com

Tech. Services: (800) 477-8326
 Fax: (800) 765-8326
 Order Entry: (800) 541-1418
 Fax: (800) 288-7031

Parts List for:

9520
9520-MHI

THREE POSITION, 3-WAY MANUAL VALVE ASSEMBLY



SECTION A-A

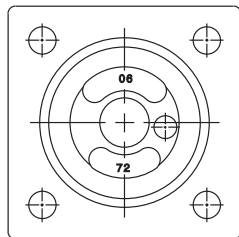
Note: Shaded areas reflect last revision(s) made to this form.

Parts List, Form No. 101377, Back sheet 1 of 1

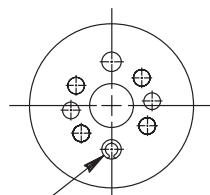
Item No.	Part No.	No. Req'd	Description	Item No.	Part No.	No. Req'd	Description
1	15130	2	Plug (1/16 NPTF)	17	10444	1	Compression Spring (3/16 I.D. X 13/32 Lg.)
2	209383	1	Decal	18	10378	1	Steel Ball (3/8 dia.)
3	14972	2	Pipe Plug (1/4 NPTF)	19	64572	1	Valve Body
4	10856	4	Cap Screw (1/4-20 UNC X 2-1/2 Lg.) Note: When using this valve on a PE30 Series pump order (4) 11956 Cap Screws for mounting valve to pump.	20	21975	4	Spring Washer
5	11013	4	Cap Screw (5/16-18 X 1" Lg.; Torque to 300/325 in. lbs.)	21	46086	1	Rotor
6	11127	1	Pressure Plug (3/8 NPTF)	22	214801	1	Spacer Washer
7	*213674	1	V-ring	23	10496	1	Pin
8	46057	1	End Stem	24	200609	2	Drain Tube
9	15095	1	Compression Spring	25	250056	1	Pin
10	10375	1	Steel Ball (1/4 dia.)	26	11228	1	Thrust Bearing
11	61343	1	Valve Cap	27	11227-1	1	Bearing Race
12	251563	4	Seal	28	*15892	1	O-ring (1.956 X 1.720 X .118; Nitrile)
	252460	4	Seal (For 9520-MHI only)		19097	1	O-ring (1.956 X 1.720 X .118; Viton)
13	*11863	4	PTFE Backup Washer (1/2 X 3/8 X 1/16)		212887	1	O-ring (1.956 X 1.720 X .118; EPR)
14	*10268	5	O-ring (1/2 X 3/8 X 1/16; Nitrile)	29	46048	1	Stem
	11439	5	O-ring (1/2 X 3/8 X 1/16; Viton)	30	15911	1	Cap Screw (1/4-20 X 5/8 Lg.; Torque to 60/80 in. lbs. Note: Apply Loctite No. 222 or equiv. at assembly)
	17716	5	O-ring (1/2 X 3/8 X 1/16; EPR)	31	250042	1	Stud
15	305975	1	Valve Screw (Torque to 30/35 ft. lbs.)	32	211911	1	Plastic Knob
16	*14874	1	Soft Copper Washer (.700 X 1/2 X 1/32)				

Part numbers marked with an asterisk (*) are contained in Repair Kit No. 300451.
Note: Alternate material seals listed for special valves factory equipped with viton or EPR seals.

SPECIFICATIONS

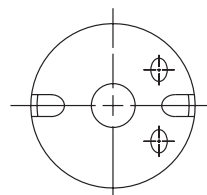


END CAP
BOTTOM VIEW

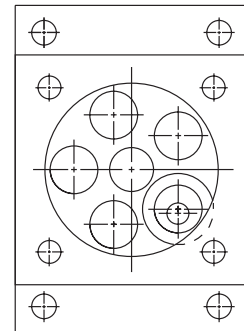


ROTOR
TOP VIEW

ROLL PIN LOCATION
(POSITION OPENING AS SHOWN)

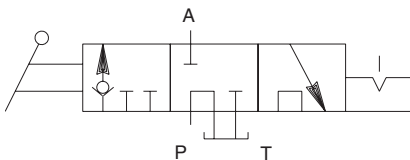


ROTOR
BOTTOM VIEW



VALVE BODY
TOP VIEW

INTERNAL ASSEMBLY ORIENTATION OF PARTS



HYDRAULIC SCHEMATIC

Pump-mounted, manual (posi-check), detented, three position, 3-way, tandem center, dual return valve.

Rated Pressure: 10,000 PSI
Case Pressure: 500 PSI Max.
Rated Flow: 5 GPM

Function:

Center Position:

"A" port blocked
"Pressure" port to tank

"A" Position:

Pressure to "A" port
Tank port blocked

Release Position:

Pressure to tank (independent return)
"A" port to tank (independent return)

Note: "A" port blocked with the pressure port open tank during transition between valve positions. (non-interflow)

Note: Shaded areas reflect last revision(s) made to this form.