

SUPER GRIP DISPOSABLE GLOVES

FIT, DEXTERITY, TRACTION GRIP, AMBIDEXTROUS

- ◆ Embossed fish scale pattern on the outside and inside of the glove for ergonomic traction and exceptional wet grip on outside with reduced hand slippage on inside
- ◆ Chemical resistant 100% 6 mil nitrile
- ◆ Beaded cuff for secure fit around the arm
- ◆ CE level 5 dexterity for superior fit, feel, and comfort
- ◆ Powder Free
- ◆ 9.5" Length
- ◆ Ambidextrous fit for less waste
- ◆ Industrial use, great for the food processing/service industry



Technical Data

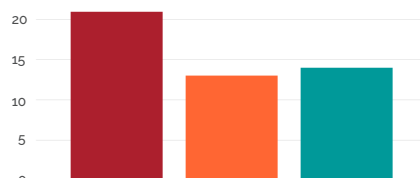
| | |
|---------------|---|
| Material | 100 % Nitrile |
| Standards | EN374-1:2003 - Chemical Protection EN374-2:2003 - Micro Organism Protection EN420 - Level 5 Dexterity EN1186-3 - Migration Testing for Food Contact Materials FFDCA - Meets FFDCA Requirements for Food Contact |
| Cuff Closure | Beaded Cuff |
| Mil Thickness | 6 Mil |
| Colors | Black, Orange |
| Sizes | S-XXL |
| Packaging | 100 gloves/box 20 boxes/carton |

Available in

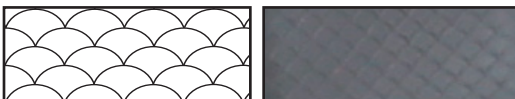
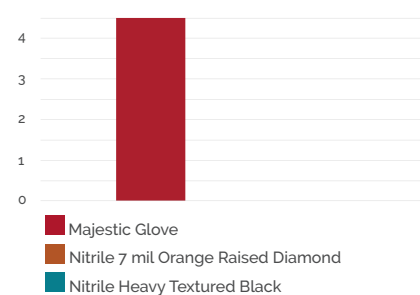
| | |
|--------|--------|
| 3276AK | Black |
| 3276AO | Orange |

Performance Comparison

Pinch Grip Test with Motor Oil (1.0 kgf Load)



Whole Hand Grip Test with Motor Oil (6.5 kgf Load)



Embossed fish scale pattern provides exceptional grip on the outside and inside of the glove



All safety equipment should be selected in conjunction with an approved safety program that assesses your specific hazards. The selection and use of specific products sold by Majestic is exclusively within the control of, and remains the sole responsibility of the customer. Many variables beyond the control of Majestic affect the results obtained in applying these products. Inappropriate selection and/or use of safety products may cause serious injury.

Reliability in Safety.

Majestic Glove
2510 W Casino Rd
Everett, WA 98204

P: 800-367-4568
F: 425-407-1030
orders@majesticlove.com

majesticlove.com