

Steel Shelving

Shelving Features

Shelf Clips

Quickly lock into place, on either side of uprights. Disengages easily to re-position shelves, no tools needed.

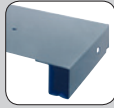
T-Post Uprights

Patented design, formed of tough, durable hot-rolled steel affords easy shelf adjustments on 1½" centers using shelf clips.

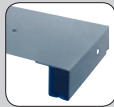
Beaded-Post Uprights

Ideal for light-medium office applications where a small profile post is required at front of shelving section.

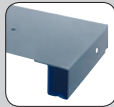
Shelf Options



22-Gauge Medium-Duty, Box "W" shelves provide up to 600 lb. capacity* for storage of aerosols, tools, drills, safety supplies, etc.



20-Gauge Heavy-Duty, Box "W" shelves provide up to 900 lb. capacity* to hold grinders, wheels, gears, sprockets, and other similar articles.



18-Gauge Extra Heavy-Duty, Box "W" shelves provide up to 1,300 lb. capacity* for storing motors, pumps, and other heavy equipment.



18-Gauge Traditional Flanged shelves provide up to 700 lb. capacity* for electrical fittings, clamps, etc.



Shelf Clips

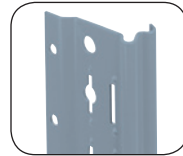
All shelving units come with 4 shelving clips per shelf.



T-Post Uprights



Beaded-Post Uprights



Angle Uprights

see page 57



*Capacities are based on evenly distributed loads. All shelves maintain a 1.65 safety factor and posts a 1.92 factor. See page 39 for detailed product specifications. Maximum load capacity per section is 8,000 lbs. based on 18" maximum shelf spacing and no seismic considerations.



Shelf Load Capacities for 8000 Series Shelving

Size W x D	22-Ga. Medium Box "W"		20-Ga. Heavy Duty Box "W"		18-Ga. Extra Heavy Duty Box "W"		18-Ga. Traditional Flanged	
	Cat. No.	Capacity	Cat. No.	Capacity	Cat. No.	Capacity	Cat. No.	Capacity
30" x 30"	N/A	N/A	8593H	800 lbs.	N/A	N/A	N/A	N/A
36" x 12"	8560M	600 lbs.	8560H	800 lbs.	8560X	1,150 lbs.	8560	550 lbs.
36" x 15"	8584M	600 lbs.	8584H	825 lbs.	8584X	1,200 lbs.	8584	600 lbs.
36" x 18"	8561M	600 lbs.	8561H	900 lbs.	8561X	1,300 lbs.	8561	650 lbs.
36" x 24"	8562M	600 lbs.	8562H	800 lbs.	8562X	1,150 lbs.	8562	700 lbs.
36" x 30"	N/A	**	8585H	740 lbs.	8585X	950 lbs.	8585	500 lbs.
36" x 36"	N/A	**	8586H	640 lbs.	8586X	850 lbs.	8586	450 lbs.
42" x 12"	N/A	**	8565H	650 lbs.	8565X	830 lbs.	8565	500 lbs.
42" x 15"	N/A	**	8587H	650 lbs.	8587X	880 lbs.	8587	475 lbs.
42" x 18"	N/A	**	8566H	720 lbs.	8566X	900 lbs.	8566	450 lbs.
42" x 24"	N/A	**	8567H	700 lbs.	8567X	880 lbs.	8567	500 lbs.
42" x 30"	N/A	**	8588H	650 lbs.	8588X	850 lbs.	8588	400 lbs.
42" x 36"	N/A	**	8589H	625 lbs.	8589X	820 lbs.	8589	325 lbs.
48" x 12"	N/A	**	8300H	600 lbs.	8300X	750 lbs.	8300	350 lbs.
48" x 15"	N/A	**	8590H	600 lbs.	8590X	700 lbs.	8590	325 lbs.
48" x 18"	N/A	**	8301H	600 lbs.	8301X	700 lbs.	8301	300 lbs.
48" x 24"	N/A	**	8302H	560 lbs.	8302X	750 lbs.	8302	300 lbs.
48" x 30"	N/A	**	8591H	540 lbs.	8591X	730 lbs.	8591	300 lbs.
48" x 36"	N/A	**	8592H	480 lbs.	8592X	640 lbs.	8592	300 lbs.

Shelves available in multi- or single pack quantities. Contact Lyon Customer Service at 800-323-0082.

**Please consult your factory representative, Lyon does not generally recommend 22-gauge on industrial shelving requirements larger than 36" x 24"