



LAB WASTE CONTAINMENT



HPLC CONTAINMENT



SAFE STORAGE



SAFETY EYE/FACE WASH



**NEW
PRODUCTS**

NEW

**LOOK FOR
ICON INSIDE**

LABORATORY SAFETY

**INDUSTRY LEADING
PRODUCTS FOR
SAFETY IN LABS,
SCALE-UP PROCESS,
AND INDUSTRY.**

**FROM BENCH TO FIELD, JUSTRITE
PRODUCTS MAINTAIN SAFETY**



Ready to solve your laboratory needs

YOUR BUSINESS IS UNIQUE

JUSTRITE CUSTOMIZED SAFETY PRODUCTS WILL FIT

When it comes to meeting our customers' needs, Justrite doesn't stop at a standard offering. We welcome the opportunity to make products designed to fit your particular application. Whether it's a safety cabinet, spill containment berm, or HPLC can, our team will deliver it to your specifications. To learn more, call our customer service team at 800-798-9250.



SAFETY BY CHANGE?

NOT WITH A JUSTRITE STUD-E™ SURVEY

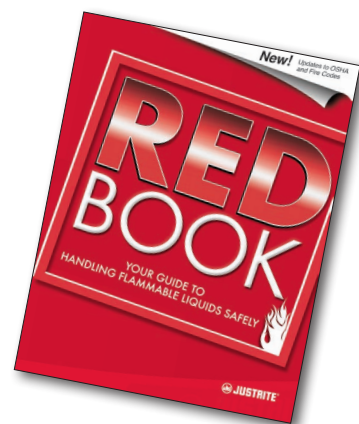
Justrite's free consultative and confidential safety survey—known as STUD-E™ for STORAGE, TRANSFER, USE, DISPOSAL, AND EVALUATION of flammable liquids—addresses the inherent concerns with handling volatile hazardous liquids. This helps you prevent fires, protect your people from potential injuries or death, protect the environment to meet sustainability initiatives, and assure compliance to OSHA and EPA regulations. Put our expertise to work and improve your overall safety program by contacting your preferred distributor, or calling us today at 800-798-9250, to arrange your own STUD-E™ safety survey.



LEARN MORE!

GET A COPY OF THE JUSTRITE REDBOOK

The RedBook! Inside you'll find explanations of the equipment and methods you can use to help minimize the chance of fires caused, or spread by, ignition of flammable and combustible liquids. In addition, check out the latest updates on hazardous materials safety cabinets per NFPA and IFC, safety cabinet venting guidelines, and OSHA liquids classification. For end users, OSHA officers, fire officials, and insurance risk managers, the RedBook is a must-have for anyone concerned about worker protection. Available in printed or electronic formats, go to justrite.com/literature to learn more.



JUSTRITE PRODUCTS IN ACTION!

INFORMATIONAL VIDEOS MAKE YOUR JOB EASIER

Learn more about our products by seeing them put to proper use. Our videos feature some of our latest product introductions, like our new polyethylene cabinet for corrosives, and also informative displays of employing safety cabinets and cans, spill containment berms, and more.

youtube.com/user/JustriteMfg/videos



Approval and Compliance Key

FM	Tested and approved by FM Approvals	I	Complies with the International Fire Code (IFC)	EN	Complies with European standards EN 14470-1 and EN 14727
UL/ULC	Underwriters Laboratories listed in the U.S. and Canada	A	Complies with NFPA 1 Fire Code - 2012 Edition	E	Complies with Environmental Protection Agency (EPA) Regulations
TÜV	TÜV Technical Inspection Association certified	A9	Complies with NFPA 1 Fire Code - 2009 Edition	S	Supports EPA Spill Prevention, Control and Countermeasures Rule (SPCC)
N	Complies with NFPA* Flammable and Combustible Liquids Code 30	H	Complies with NFPA 400 Hazardous Material Code	V	Validated by the EPA Environmental Technology Verification Program
O	Complies with Occupational Safety and Health Administration (OSHA) Regulations	AN	Meets or exceeds American National Standards Institute (ANSI) Z358.1	ENS	Complies with European standards for showers EN 15154

*National Fire Protection Association



Using multiple cabinets helps you organize and segregate dangerous liquids.

Sure-Grip® EX Classic Safety Cabinets

Safe, dependable flammable liquid storage and protection

- Independently fire tested and approved by FM Approvals.
- Avoid fines—meet regulations, fire codes, and insurance requirements.

Protect workers, reduce fire risks, and improve productivity by storing flammable fuels and chemicals in code-compliant safety cabinets. Designed to meet OSHA and NFPA 30 standards, Sure-Grip® EX cabinets are constructed of sturdy 18-gauge (1-mm) thick double-wall, welded steel with 1-1/2-in (38-mm) of insulating air space for fire resistance. High-performance, self-latching doors close easily and securely for maximum protection under fire conditions. Fail-safe closing mechanism ensures three-point stainless steel bullet latching system works every time.

For added security, U-Loc™ handle comes with a cylinder lock and key set or accepts an optional padlock. Haz-Alert™ reflective warning labels are highly visible under fire conditions or during power outages when illuminated with a flashlight.

Patented SpillSlope® galvanized steel shelves direct spills to back and bottom of a leakproof sump. They adjust on 3-in (76-mm) centers for versatile storage. Cabinets also feature a leakproof 2-in (51-mm) bottom sump, dual vents with flame arresters, four adjustable self-leveling feet, grounding connector and trilingual warning label. Durable powder-coat finish provides excellent chemical resistance.

Self-closing models also meet the International Fire Code. They shut and latch automatically when a fusible link melts at 165°F (74°C) under fire conditions. Unique, concealed self-closing mechanism offers obstruction-free access to contents. All cabinets are backed by a ten-year warranty.



894500



894520



893000



896000



Capacity Gallons/Liters	Number of Doors and Style	Dimensions H x W x D		Adjustable Shelves	Approval/Lstg Regulation†	Sure-Grip® Model No	Ship Wt lb/kg			
		Exterior	Interior							
30/114	2 door, manual	44 x 43 x 18 in	39.625 x 39.5 x 14.562 in	1	FM,N,O,A	893000	231/105			
	2 door, self-close	1118 x 1092 x 457 mm	1006 x 1003 x 370 mm							
45/170	2 door, manual	65 x 43 x 18 in	60.5 x 39.5 x 14.562 in	2	FM,N,O,A,I	894500	311/141			
	2 door, self-close	1651 x 1092 x 457 mm	1537 x 1003 x 370 mm							
60/227	2 door, manual	65 x 34 x 34 in	60.5 x 30.75 x 30.34 in					FM,N,O,A	896000	388/176
	2 door, self-close	1651 x 864 x 864 mm	1537 x 781 x 771 mm							
90/341*	2 door, manual	65 x 43 x 34 in	60.5 x 39.5 x 30.34 in	FM,N,O,A	899000	481/218				
	2 door, self-close	1651 x 1092 x 864 mm	1537 x 1003 x 771 mm							

*OSHA 29CFR 1910.106(d)(3) states that not more than 60 gallons (227L) of Category 1, 2, or 3 flammable liquids, nor more than 120 gallons (454L) of Category 4 flammable liquids may be stored in a safety cabinet. †See inside front cover for Approval and Compliance Key.

Extra Accessories

Description	Fits Cabinet Styles	Dimensions W x D	Model No	Ship Wt lb/kg
SpillSlope® steel shelf	30 & 45 gallon (114 & 170 L) - 43 in W (1092 mm)	39.375 x 14 in (1000 x 356 mm)	29937	10/5
SpillSlope® steel shelf	30 gallon (114 L) - 36 in W (914 mm)	32.375 x 20 in (822 x 508 mm)	29942	12/5
SpillSlope® steel shelf	60 gallon (227 L) - 34 in W (864 mm)	30.375 x 29 in (771 x 737 mm)	29944	16/7
SpillSlope® steel shelf	90 gallon (341 L) - 43 in W (1092 mm)	39.375 x 29 in (1000 x 737 mm)	29945	21/9



Place Slimline cabinet where floor space is limited.

Sure-Grip® EX Slimline Safety Cabinets

Gain valuable storage space even when floor space is tight

- Welded, 18-gauge (1-mm) steel double wall with 1-1/2-in (38-mm) insulating air space.
- U-Loc™ handle comes with double key set and accepts optional padlock for added security.

Fully compliant cabinets with compact design feature fire-resistant construction for the safe storage of flammable and combustible liquids. Use alone or alongside larger safety cabinets for expanded storage when floor space is limited. The standard Slimline cabinet is 18-in (457-mm) deep and fits flush alongside a 45-gallon (170-L) cabinet. The deep Slimline cabinet is 34-in (864-mm) deep and fits alongside a 60- or 90-gallon (227- or 341-L) cabinet. Both cabinets measure only 23-1/4-in (591-mm) wide.



Use color coding in your storage practices to organize and segregate liquids.

Slimline safety cabinets have all the same features as the larger safety cabinets including, a three-point, self-latching door with self-latching handle, a 2-in (51-mm) leakproof sump, and dual vents with integral flame arresters. Built-in grounding connector allows for proper grounding to reduce static build-up. Cabinets include three SpillSlope® galvanized steel shelves that direct spills to back and bottom into a 2-in (51-mm) leakproof sump. Under fire conditions when illuminated by a flashlight, highly reflective Haz-Alert™ warning labels shine brightly to alert emergency personnel to volatile contents.

Cabinets meet NFPA and OSHA regulations and are FM-approved. Self-closing models also comply with the International Fire Code.



892200

895400



Small cabinet footprint fits in the tightest spaces.



When additional storage space is needed, modular size fits nicely alongside existing cabinets.



10 Year
Limited Warranty

Capacity Gal/L	Number of Doors and Style	Dimensions H x W x D		Adj Shelves	Approval/Lstg Regulation†	Yellow Model No	Red Model No	Gray Model No	White Model No	Ship Wt lb/kg
		Exterior	Interior							
22/83 (standard)	1 door, manual	65 x 23.25 x 18 in 1651 x 591 x 457 mm	60.5 x 20 x 14.56 in	3	FM,N,O,A	892200	892201	892203	892205	208/94
	1 door, self-close		1537 x 508 x 370 mm		FM,N,O,A,I					
54/204 (deep)	1 door, manual	65 x 23.25 x 34 in 1651 x 591 x 864 mm	60.5 x 20 x 30.34 in		FM,N,O,A	895400	895401	895403	895405	298/135
	1 door, self-close		1537 x 508 x 771 mm		FM,N,O,A,I					

†See inside front cover for Approval and Compliance Key.

Extra Accessories

Description	Fits Cabinet Styles	Dimensions W x D	Model No	Ship Wt lb/kg
SpillSlope® steel shelf	22 Gallon (83 L) Slimline	19.625 x 14 in (498 x 356 mm)	29936	6/3
SpillSlope® steel shelf	54 Gallon (204 L) Deep slimline	19.625 x 29 in (498 x 737 mm)	29941	11/5

Sure-Grip® EX Under Fume Hood Safety Cabinets

Fully compliant and designed for safe storage of solvents and flammables in laboratories

- Welded, 18-gauge (1-mm) steel double-wall with 1-1/2-in (38-mm) insulating air space.
- Back wall vents with built-in flame arresters.
- Stainless steel, 3-point bullet self-latching system.

Perfect for use in laboratories. Cabinets measure 35-3/4-in (908-mm) high to fit under fume hoods, benches or counters. The 4-inch (102-mm) high x 3-in (77-mm) deep toe kick allows the hood user to stand closer, which means less leaning and better ergonomics. Cabinets feature an adjustable SpillSlope® shelf that directs any spills to back and bottom of a leakproof 2-in (51-mm) sump. U-Loc™ handle comes with double key set and accepts optional padlock for added security. Durable powder-coat finish, inside and out, provides maximum chemical resistance. Cabinets come in three colors—safety yellow, stainless silver or light neutral to complement laboratory settings. Single-door cabinets are available in either left or right-hinge door configuration. Highly reflective Haz-Alert™ hazard labels at top and bottom provide easy visibility.

Note: 35-3/4-in (908-mm) height includes leg levelers installed and extended 5/8-in (15.9-mm).



Use these cabinets for the safe storage of flammables under fume hoods, benches or counters.



882410



882424



883607



Need a custom-made cabinet?

Configure a cabinet to meet your specific application. Visit justrite.com/custom-cabinets to learn more. Complete a Custom Cabinet Form (PDF) and get started today.



Capacity Gallons/Liters	Number of Doors and Style	Dimensions H x W x D		Approval/Lstg Regulation†	Yellow Model No	Silver Model No	Lt Neutral Model No	Ship Wt lb/kg
		Exterior	Interior					
15/57	1 door, right hinge, manual	35.75 x 24 x 21.625 in 908 x 610 x 549 mm	26.531 x 20.77 x 18.327 in 674 x 528 x 466 mm	FM,O,A,N	882400	882404	882407	135/61
	1 door, left hinge, manual							
	1 door, right hinge, self-close							
	1 door, left hinge, self-close							
19/72	2 doors, manual	35.75 x 30 x 21.625 in 908 x 762 x 549 mm	26.531 x 26.77 x 18.327 in 674 x 680 x 466 mm	FM,O,A,N	883000	883004	883007	176/80
	2 doors, self-close							
23/87	2 doors, manual	35.75 x 36 x 21.625 in 908 x 914 x 549 mm	26.531 x 32.77 x 18.327 in 674 x 832 x 466 mm	FM,O,A,N	883600	883604	883607	186/84
	2 doors, self-close							
31/117	2 doors, manual	35.75 x 48 x 21.625 in 908 x 1219 x 549 mm	26.531 x 44.77 x 18.327 in 674 x 1137 x 466 mm	FM,O,A,N	884800	884804	884807	240/109
	2 doors, self-close							

†See inside front cover for Approval and Compliance Key.

Extra Accessories

Description	Fits Cabinet Styles	Dimensions W x D	Model No	Ship Wt lb/kg
SpillSlope® steel shelf	15 gallon (57 L)	20.125 x 18 in (511 x 457 mm)	29950	12/5
SpillSlope® steel shelf	19 gallon (72 L)	26.125 x 18 in (664 x 457 mm)	29951	13/6
SpillSlope® steel shelf	23 gallon (87 L)	32.5 x 18 in (826 x 457 mm)	29949	14/6
SpillSlope® steel shelf	31 gallon (117 L)	44.333 x 18 in (1130 x 457 mm)	29953	15/7



Ninety minutes of fire protection provides high level of safety when point-of-use storage is required.



90-Minute EN Safety Storage Cabinets NEW

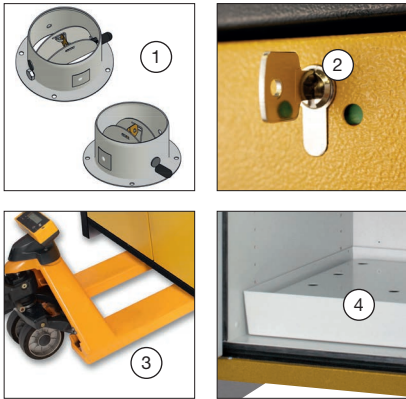
Extreme fire resistance for high risk environments—store flammables with 90-minutes of protection

- EN, OSHA and NFPA compliant—Independently fire tested and approved by FM Approvals and MPA Dresden.
- Hybrid-close door action—manual close doors stop in any position, but self close in the event of a fire to protect contents.
- Security—Independent cylinder locks on each door includes locking state indicator (red/green).

Constructed using multiple layers of fire-resistant gypsum and mineral fiber insulation, cabinet body has a rugged powder coated steel exterior that provides excellent corrosion resistance. Under fire conditions, intumescent strips expand and hermetically seal all gaps to reduce heat entering the cabinet, providing 90-minutes of content protection and extended evacuation time. Hybrid style doors open or close manually and include a damper that adjusts the force needed to move the doors. In the event of a fire, the built-in fusible link system releases to allow automatic closure of doors at 122°F (50°C). Cabinets are EN compliant, FM-approved and meet NFPA 30, NFPA 1, and OSHA standards.

Powder-coat finish steel shelves adjust on 1-1/4-inch (32-mm) increments and have a load capacity of 165-lbs (75-kgs). Shelves with 1-inch (30-mm) high ledge prevent small containers from easily sliding off. Removable bottom sump with detachable perforated insert features a 3-sided lip seal to ensure leaks or spills from shelves are captured at the bottom of the 3-in (76-mm) sump, keeping containers stored in the sump clean and dry.

Haz-Alert™ reflective tri-lingual warning labels are highly visible under fire conditions or during power outages when illuminated with a flashlight. Cabinets also feature adjustable leveling feet, an integrated transport base for easy repositioning (base cover optional), and mandatory air vents per EN 14470-1. Vent butterfly valve closes securely at 158°F (70°C) in the event of a fire. Vents include flame arresters and caps for FM compliance.



1. Two top vents with butterfly valve close automatically at 158 °F (70°C) under fire conditions. Sidewalls inside the cabinet feature upper and lower black air grids with integrated ducts that connect to top vents.
2. Independent cylinder locks on each door includes locking state indicator (red/green).
3. Integrated transport base accepts pallet jack for easy repositioning of empty cabinets. Accepts optional, removable base cover.
4. Removable sump with separate detachable perforated insert allows spills to flow into sump for easy cleaning, and keeps containers elevated to stay clean and dry. Bright interior provides maximum visibility in low light conditions to quickly identify contents.



22605



22607 with optional base cover 22637



Fire Rating (Minutes)	Capacity Gallons/Liters (5 Gallon Can)	Maximum Capacity* (1 Liter Bottle)	Number of Doors and Style	Dimensions H x W x D		Adjustable Shelves	Approval/Lstg Regulation†	Model No	Ship Wt lb/kg
				Exterior	Interior				
90	30/114	168	2 door, hybrid-close	76.89 x 35.16 x 24.21 in 1953 x 893 x 615 mm	64.85 x 29.5 x 20.55 in 1647 x 750 x 522 mm	3	FM, EN, N, O, A	22605	840/381
	45/170	264		76.89 x 46.97 x 24.21 in 1953 x 1193 x 615 mm	64.85 x 41.34 x 20.55 in 1647 x 1050 x 522 mm			22607	1016/461

*Achieved through the use of additional shelves, maximum capacity is an estimate and may vary depending upon container size. Check with local authority for maximum allowable quantity restrictions.
†See inside front cover for Approval and Compliance Key.



30-Minute EN Safety Storage Cabinets NEW

Safely store and segregate flammables—30 minutes of extreme fire-resistance

- EN, OSHA and NFPA compliant—Independently fire tested and approved by FM Approvals and MPA Dresden.
- Hybrid-close door action—manual close doors stop in any position, but self close in the event of a fire to protect contents.

Designed to provide 30-minutes of fire resistance, attractive two-toned yellow cabinet is constructed with a body of melamine resin and flame retardant special plates, and a steel door front covered by a textured, durable powder-coat finish. Under fire conditions, special intumescent protection strips expand and seal hermetically to close gaps between the door(s) and frame to reduce heat entering the cabinet. Hybrid style door(s) operate manually and stop in any position, but in the event of a fire, the built-in fusible link system will melt and release to allow automatic closure of door(s) at 122°F (50°C). Cabinets are EN compliant, FM-approved and meet NFPA 30, NFPA 1, and OSHA standards.

Cabinets have many of the same features as the 90-minute model, including leakproof, removable bottom sump with perforated insert, adjustable powder-coat finish steel shelves with 1-inch (30-mm) lip and load capacity of 165-lbs (75-kgs), Haz-Alert™ warning label, and a ground connection. Air vents close securely at 158°F (70°C) in the event of a fire and include flame arresters and caps. Independent cylinder lock on door(s) provide added security. Bright interior color offers maximum visibility to stored goods. Integrated transport base makes it easy to reposition empty cabinets. Accepts removable base cover (optional).



Position single-door extreme fire resistance cabinets where space is limited. Easily add a second cabinet if storage needs increase.



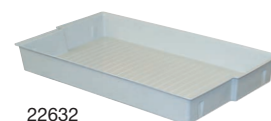
Cabinet mover helps transport cabinets easily through doorways and spaces where a pallet jack is not practical.



22601



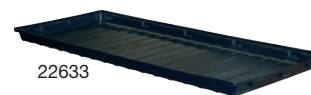
22603 with optional base cover 22635



22632



22631



22633



22634



22638



Fire Rating (Minutes)	Capacity Gallons/Liters (5 Gallon Can)	Maximum Capacity* (1 Liter Bottle)	Number of Doors and Style	Dimensions H x W x D		Adjustable Shelves	Approval/Lstg Regulation†	Model No	Ship Wt lb/kg
				Exterior	Interior				
30	30/114	168	1 door, hybrid-close	76.65 x 34.02 x 24.41 in 1947 x 864 x 620 mm	64.02 x 29.5 x 20.44 in 1626 x 750 x 519 mm	3	FM,EN,N,O,A	22601	507/230
	45/170	264	2 door, hybrid-close	76.65 x 45.83 x 24.41 in 1947 x 1164 x 620 mm	64.02 x 41.34 x 20.44 in 1626 x 1050 x 519 mm			22603	622/282

*Achieved through the use of additional shelves, maximum capacity is an estimate and may vary depending upon container size. Check with local authority for maximum allowable quantity restrictions.
†See inside front cover for Approval and Compliance Key.

Extra Accessories

Description	Fits Cabinet Styles	Dimensions	Model No	Ship Wt lb/kg
Steel shelf, powder-coated	30 and 90 Minute - 30 gallon (114 L)	W x D: 29.21 x 17.3 in (742 x 435 mm)	22630	15/7
	30 and 90 Minute - 45 gallon (170 L)	W x D: 41.02 x 17.3 in (1042 x 435 mm)	22631	11/5
Polypropylene tray	30 and 90 Minute - 30 gallon (114 L)	H x W x D: 3.47 x 29.13 x 17.09 in (88 x 740 x 434 mm)	22632	6/3
Polyethylene tray	30 and 90 Minute - 45 gallon (170 L)	H x W x D: 1.97 x 40.95 x 16.93 in (50 x 1040 x 430 mm)	22633	
Base cover	30 Minute - 30 gallon (114 L)	H x W: 3.43 x 30.95 in (87 x 786 mm)	22634	5/2
	30 Minute - 45 gallon (170 L)	H x W: 3.43 x 42.76 in (87 x 1086 mm)	22635	7/3
	90 Minute - 30 gallon (114 L)	H x W: 3.35 x 32.21 in (85 x 818 mm)	22636	3/2
	90 Minute - 45 gallon (170 L)	H x W: 3.35 x 44.02 in (85 x 1118 mm)	22637	4/2
Cabinet mover - Set of 2	30 and 90 Minute - 30 & 45 gallon (114 & 170 L)	H x W x D: 3.54 x 5.51 x 23.62 in (90 x 140 x 600 mm)	22638	20/9



Safety Cabinets for Hazardous Materials NEW

Identify and safely store hazardous materials such as acids, bases, oxidizers, or toxic materials

High-performance cabinets feature all-welded, 18-gauge (1-mm) double-walled steel construction with 1½-inch (38-mm) air space, a 2-inch (51-mm) leakproof sump, U-Loc™ handle, dual vents with flame arresters, adjustable self-leveling feet, and ground wire connector. Application-specific labels identify contents to safely store and segregate incompatible chemicals.

Self-closing door(s) with a three-point, stainless steel bullet latching system securely close for maximum protection under fire conditions. They self-index and self-latch to close in sequence to ensure a tight closure from top to bottom.

For increased chemical resistance against leaks or drips, steel SpillSlope® adjustable shelves include a polyethylene tray that sits on top of the shelf, as well as a separate polyethylene liner for the bottom sump. The popular 30-gal (114-L) cabinet includes an extra polyethylene work tray that can be placed on top of cabinet for a handy work surface.

Cabinets are FM-approved (except for 4-gal /15-L models), and come with a ten-year warranty.

Segregate and identify hazardous materials to ensure a safe working environment.



Encased self-closing mechanism provides obstruction-free access to top shelf space. Fusible link melts at 165°F (74°C) to automatically close door(s) under fire conditions.



Capacity Gallons/Liters	Number of Doors and Style	Dimensions H x W x D		Adjustable Shelves	Approval/Lstg Regulation†	Sure-Grip® Model No	Ship Wt lb/kg
		Exterior	Interior				
Classic Safety Cabinets							
30/114	2 door, self-close	44 x 43 x 18 in 1118 x 1092 x 457 mm	39.625 x 39.5 x 14.56 in 1006 x 1003 x 370 mm	1	FM,H,A,I	863028	240/109
45/170	2 door, self-close	65 x 43 x 18 in 1651 x 1092 x 457 mm	60.5 x 39.5 x 14.56 in 1537 x 1003 x 370 mm	2		864528	303/137
60/227	2 door, self-close	65 x 34 x 34 in 1651 x 864 x 864 mm	60.5 x 30.75 x 30.34 in 1537 x 781 x 771 mm	2		866028	370/168
90/341	2 door, self-close	65 x 43 x 34 in 1651 x 1092 x 864 mm	60.5 x 39.5 x 30.34 in 1537 x 1003 x 771 mm	2		869028	436/198
Countertop Safety Cabinet							
4/15	1 door, self-close	22 x 17 x 17 in 559 x 432 x 432 mm	18.5 x 13.75 x 13.75 in 470 x 349 x 349 mm	1	H,A,I	860428	69/31
Compac Safety Cabinets							
12/45	1 door, self-close	35 x 23.25 x 18 in 889 x 591 x 457 mm	30.5 x 20 x 14.56 in 775 x 508 x 370 mm	1	FM,H,A,I	861228	123/56
15/57	1 door, self-close	44 x 23.25 x 18 in 1118 x 591 x 457 mm	39.625 x 20 x 14.56 in 1006 x 508 x 370 mm	1		861528	156/70
Piggyback Safety Cabinets							
12/45	2 door, self-close	18 x 43 x 18 in 457 x 1092 x 457 mm	13 x 39.5 x 14.56 in 330 x 1003 x 370 mm	0	FM,H,A,I	861328	132/60
17/64	2 door, self-close	24 x 43 x 18 in 610 x 1092 x 457 mm	19.5 x 39.5 x 14.56 in 495 x 1003 x 370 mm	1		861728	174/79
Slimline Safety Cabinets							
22/83 (standard)	1 door, self-close	65 x 23.25 x 18 in 1651 x 591 x 457 mm	60.5 x 20 x 14.56 in 1537 x 508 x 370 mm	3	FM,H,A,I	862228	211/96
54/204 (deep)	1 door, self-close	65 x 23.25 x 34 in 1651 x 591 x 864 mm	60.5 x 20 x 30.34 in 1537 x 508 x 771 mm			865428	314/142
Undercounter Safety Cabinet							
22/83	2 door, self-close	35 x 35 x 22 in 889 x 889 x 559 mm	27.375 x 31.75 x 18.75 in 695 x 806 x 476 mm	1	FM,H,A,I	862328	197/89

Accessories — For extra shelves, see page 13. †See inside front cover for Approval and Compliance Key.

ChemCor® Lined Safety Cabinets for Hazardous Materials NEW

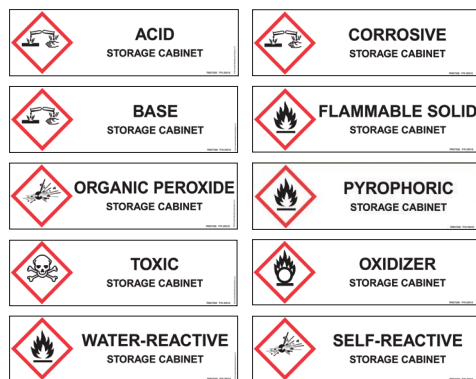
Seamless ChemCor® finish protects interior cabinet surfaces from rust and corrosion

For superior protection against corrosion from drips and off-gassing from harsh chemicals, use ChemCor® lined safety cabinets. They feature a unique, flame-coated thermoplastic finish on interior doors, shelves, walls, ceiling, and sump. The non-porous, seam-free surface eliminates the need for corrosion-prone rivets or fasteners. It resists staining and cleans up easily. Popular 30-gal (114-L) cabinet includes a separate polyethylene work tray that can be placed on top of cabinet for a handy work surface.

Cabinets are FM-approved (except for 4-gal/15-L models), and come with a ten-year warranty.



Store small quantities of hazardous materials at point-of-use for quick and easy access.



Label pack includes ten content specific labels.



8645282



8622282



8612282



8604282



Capacity Gallons/Liters	Number of Doors and Style	Dimensions H x W x D		Adjustable Shelves	Approval/Lstg Regulation†	Sure-Grip® Model No	Ship Wt lb/kg
		Exterior	Interior				
Classic Safety Cabinets							
30/114	2 door, self-close	44 x 43 x 18 in 1118 x 1092 x 457 mm	39.625 x 39.5 x 14.56 in 1006 x 1003 x 370 mm	1	FM,H,A,I	8630282	251/114
45/170	2 door, self-close	65 x 43 x 18 in 1651 x 1092 x 457 mm	60.5 x 39.5 x 14.56 in 1537 x 1003 x 370 mm	2		8645282	322/146
60/227	2 door, self-close	65 x 34 x 34 in 1651 x 864 x 864 mm	60.5 x 30.75 x 30.34 in 1537 x 781 x 771 mm			8660282	400/181
Countertop Safety Cabinet							
4/15	1 door, self-close	22 x 17 x 17 in 559 x 432 x 432 mm	18.5 x 13.75 x 13.75 in 470 x 349 x 349 mm	1	H,A,I	8604282	70/32
Compac Safety Cabinets							
12/45	1 door, self-close	35 x 23.25 x 18 in 889 x 591 x 457 mm	30.5 x 20 x 14.56 in 775 x 508 x 370 mm	1	FM,H,A,I	8612282	137/62
Piggyback Safety Cabinets							
12/45	2 door, self-close	18 x 43 x 18 in 457 x 1092 x 457 mm	13 x 39.5 x 14.56 in 330 x 1003 x 370 mm	0	FM,H,A,I	8613282	142/64
17/64	2 door, self-close	24 x 43 x 18 in 610 x 1092 x 457 mm	19.5 x 39.5 x 14.56 in 495 x 1003 x 370 mm	1		8617282	175/79
Slimline Safety Cabinets							
22/83 (standard)	1 door, self-close	65 x 23.25 x 18 in 1651 x 591 x 457 mm	60.5 x 20 x 14.56 in 1537 x 508 x 370 mm	3	FM,H,A,I	8622282	211/96
Undercounter Safety Cabinet							
22/83	2 door, self-close	35 x 35 x 22 in 889 x 889 x 559 mm	27.375 x 31.75 x 18.75 in 695 x 806 x 476 mm	1	FM,H,A,I	8623282	199/90

Accessories — For extra shelves, see page 13. †See inside front cover for Approval and Compliance Key.



Safely store corrosives in fire-resistant steel safety cabinets.

Sure-Grip® EX Classic Safety Cabinets for Corrosives

Specially designed for safely storing corrosives in laboratories

- Protect laboratories and personnel from damaging corrosives.
- Powder-coat finish specially formulated to resist acids, bases and solvents.

Justrite blue steel safety cabinets for corrosives have the same quality safety features as the cabinets for flammables. All models come with double-wall construction, dual vents, grounding wire connections, adjustable shelves, leakproof sills, three-point self-latching doors and leveling feet. Polyethylene trays fit over galvanized steel shelves and a separate polyethylene liner for the bottom sump helps resist aggressive chemicals. Easily remove the liner for quick cleaning of drips and leaks. The popular 30-gallon (114-L) 2-door cabinets also include an extra polyethylene work tray that can be secured to cabinet top for a handy work surface. An all epoxy baked-on powder-coat finish, inside and out, provides increased chemical resistance. FM-approved.



Using non-flammable corrosives?

See page 26 for quick pouring, translucent polyethylene containers designed to resist acids and caustics.



894502



893002



Capacity Gallons/Liters	Number of Doors and Style	Dimensions H x W x D		Adjustable Shelves	Approval/Lstg Regulation†	Sure-Grip® Model No	Ship Wt lb/kg
		Exterior	Interior				
30/114	2 door, manual	44 x 43 x 18 in 1118 x 1092 x 457 mm	39.625 x 39.5 x 14.562 in 1006 x 1003 x 370 mm	1	FM,A9	893002	239/108
	2 door, self-close				FM,A9	893022	240/109
	1 bi-fold sliding door, self-close				FM,A9	893082	246/112
45/170	2 door, manual	65 x 43 x 18 in 1651 x 1092 x 457 mm	30.625 x 32.625 x 21.75 in 778 x 829 x 552 mm	1	FM,A9	893302	215/98
	2 door, self-close				FM,A9	894502	301/137
	1 bi-fold sliding door, self-close				FM,A9	894522	303/137
60/227	2 door, manual	65 x 34 x 34 in 1651 x 864 x 864 mm	60.5 x 30.75 x 30.34 in 1537 x 781 x 771 mm	2	FM,A9	894582	323/147
	2 door, self-close				FM,A9	896002	388/176
	1 bi-fold sliding door, self-close				FM,A9	896022	370/168
90/341	2 door, manual	65 x 43 x 34 in 1651 x 1092 x 864 mm	60.5 x 39.5 x 30.34 in 1537 x 1003 x 771 mm	2	FM,A9	896082	400/181
	2 door, self-close				FM,A9	899002	454/206
	1 bi-fold sliding door, self-close				FM,A9	899022	456/207
					FM,A9	899082	460/209

Accessories — see page 13. †See inside front cover for Approval and Compliance Key.

Sure-Grip® EX Slimline Cabinets for Corrosives

Compact footprint offers versatile storage options

Use Slimline-style cabinets to expand storage capacity—modular size fits nicely alongside existing cabinets. They have all the same features as the larger corrosive safety cabinets including a three-point, self-latching door with U-Loc™ handle, a 2-in (51-mm) leakproof sump, and dual vents with integral flame arresters. For increased corrosion protection, cabinets include polyethylene trays that fit on top of three galvanized steel shelves. Under fire conditions when illuminated by a flashlight, highly reflective Haz-Alert™ warning labels shine brightly to alert emergency personnel to corrosive contents. FM-approved.



Small footprint of Slimline-style cabinets fits the tightest spaces.



Capacity Gallons/Liters	Number of Doors and Style	Dimensions H x W x D		Adjustable Shelves	Approv/Lstg Regulation†	Sure-Grip® Model No	Ship Wt lb/kg
		Exterior	Interior				
Slimline Safety Cabinets							
22/83 (standard)	1 door, manual	65 x 23.25 x 18 in	60.5 x 20 x 14.56 in	3	FM,A9	892202	208/94
	1 door, self-close	1651 x 591 x 457 mm	1537 x 508 x 370 mm		FM,A9	892222	210/95
54/204 (deep)	1 door, manual	65 x 23.25 x 34 in	60.5 x 20 x 30.34 in		FM,A9	895402	298/135
	1 door, self-close	1651 x 591 x 864 mm	1537 x 508 x 771 mm		FM,A9	895422	314/142

Accessories — see page 13. †See inside front cover for Approval and Compliance Key.

Sure-Grip® EX Countertop and Compac Cabinets for Corrosives

Make the most of your available space

Countertop and compac cabinets let you customize your work areas and keep your most frequently used fluids close at hand. These specialty cabinets have the same features as our larger cabinets plus galvanized steel shelves with attached polyethylene trays and a separate polyethylene bottom sump liner that can be easily removed for cleaning drips and leaks. Baked-on blue epoxy powder-coat finish—inside and out—resists acids, bases and solvents for added chemical resistance. Compac cabinets are FM-approved.



Capacity Gallons/Liters	Number of Doors and Style	Dimensions H x W x D		Adjustable Shelves	Approv/Lstg Regulation†	Sure-Grip® Model No	Ship Wt lb/kg
		Exterior	Interior				
4/15	1 door, manual, countertop	22 x 17 x 17 in	18.5 x 13.75 x 13.75 in	1	A9	890402	63/29
	1 door, self-close, countertop	559 x 432 x 432 mm	470 x 349 x 349 mm		A9	890422	65/30
12/45	1 door, manual, compac	35 x 23.25 x 18 in	30.5 x 20 x 14.562 in		FM,A9	891202	121/55
	1 door, self-close, compac	889 x 591 x 457 mm	775 x 508 x 370 mm		FM,A9	891222	123/56
15/57	compac; 1 door manual	44 x 23.25 x 18 in	39.625 x 20 x 14.56 in		FM,A9	891502	154/70
	compac; 1 door self-close	1118 x 591 x 457 mm	1006 x 508 x 370 mm		FM,A9	891522	156/71

Accessories — see page 13. †See inside front cover for Approval and Compliance Key.



Easily expand existing storage capacity by mounting piggyback cabinet on top of Justrite's 30- or 45-gallon cabinet.

Sure-Grip® EX Piggyback Cabinets for Corrosives

Use on bench tops or add to taller cabinets to meet increased storage needs

- Add up to 17-gallons (64-L) of additional capacity to existing cabinets.
- Compact design for easy stacking.

Create a safe storage area for acids or bases without taking up valuable floor space. Piggyback cabinets are designed to mount on top of 30- and 45-gallon (114- and 170-L), manual or self-closing Sure-Grip® EX cabinets. They can also be used independently and stack easily to provide additional storage. Turn it into a wall-mount cabinet with optional wall mount kit No. 25950.

The piggyback cabinets offer the same protection as Justrite's taller safety cabinets for corrosives. Constructed of sturdy 18-gauge (1-mm) thick double-wall, welded steel, they feature 3-point, self-latching doors that close easily and securely for maximum protection under fire conditions. Leakproof 2-in (51-mm) sump captures dangerous spills. U-Loc™ handle includes double key set and accepts optional padlock for increased security. FM-approved.



Free survey promotes workplace safety . . .

Justrite's *STUD-E™* survey identifies ways to do your job safely and efficiently—visit justrite.com/stud-e-survey to learn more and sign up.



891702 stacked



891722



891302



Capacity Gallons/Liters	Number of Doors and Style	Dimensions H x W x D		Adjustable Shelves	Approval/Lstg Regulation†	Sure-Grip® Model No	Ship Wt lb/kg
		Exterior	Interior				
12/45	2 door, manual	18 x 43 x 18 in	13 x 39.5 x 14.562 in	0	FM,A9	891302	130/59
	2 door, self-close	457 x 1092 x 457 mm	330 x 1003 x 370 mm				
17/64	2 door, manual	24 x 43 x 18 in	19.5 x 39.5 x 14.562 in	1	FM,A9	891702	149/68
	2 door, self-close	610 x 1092 x 457 mm	495 x 1003 x 370 mm				
					FM,A9	891722	151/69

Accessories — see page 13. †See inside front cover for Approval and Compliance Key.

Sure-Grip® EX Undercounter Cabinets for Corrosives

Take advantage of unused undercounter space

- Double-wall 18-gauge (1-mm) construction with 1-1/2-in (38-mm) insulating air space.
- Leakproof 2-in (51-mm) sump safely captures spills.
- U-Loc™ handle includes double key—accepts optional padlock for increased security.

Safely store corrosives under a workbench or lab counter for quick and easy access. These safety cabinets incorporate the same quality features as Justrite flammable cabinets but also include galvanized steel shelves with attached polyethylene trays and a separate polyethylene bottom sump liner that can be easily removed for cleaning drips and leaks. Toe kick allows user to stand closer to counter—less leaning and better ergonomics. Toe kick dimensions are 3.5 in (89 mm) H x 2.5 in (64 mm) D. Baked-on blue epoxy powder-coat finish—inside and out—resists acids, bases and solvents for added chemical resistance. FM-approved.



Self-latching doors include paddle handle with cylinder lock and keys.



10 Year
Limited Warranty

Capacity Gallons/Liters	Number of Doors and Style	Dimensions H x W x D		Adjustable Shelves	Approval/Lstg Regulation†	Sure-Grip® Model No	Ship Wt lb/kg
		Exterior	Interior				
22/83	2 door, manual	35 x 35 x 22 in	27.375 x 31.75 x 18.75 in	1	FM,A9	892302	209/95
	2 door, self-close	889 x 889 x 559 mm	695 x 806 x 476 mm				
					FM,A9	892322	212/96

†See inside front cover for Approval and Compliance Key.

Extra Accessories

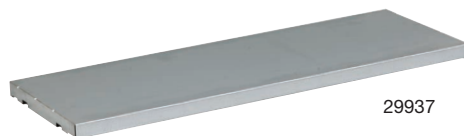
Equip your safety cabinet with accessories for storage versatility

Justrite galvanized steel shelves hold up to 350-lb (159-kg) and adjust on 3-in (76-mm) centers to meet specific workflow needs. Customize your cabinet by adding shelves to increase storage space and accommodate different sized containers. Place polyethylene trays over shelves for corrosion protection when storing corrosive liquids. Three options are available—combination shelf with poly tray, shelf alone or poly tray alone.

Save floor space and use optional wall hanger assembly on smaller cabinets when wall mounting is desirable. Two kits are available—for 4-gallon (15-liter) and 12- and 17-gallon (45- and 64-liter) Justrite safety cabinets.



29958



29937



29962

Description	Fits Cabinet Styles	Dimensions W x D	Shelf & Tray Model No	Shelf Only Model No	Tray Only Model No	Ship Wt lb/kg
SpillSlope® steel shelf	4 gallon (15 L) countertop	13.375 x 13 in (340 x 330 mm)	29973	29935	25934	5/2
SpillSlope® steel shelf	12 & 15 gallon (45 & 57 L) compac 22 gallon (83 L) slim	19.625 x 14 in (498 x 356 mm)	29959	29936	29968	9/4
SpillSlope® steel shelf	22 gallon (83 L) undercounter	31.556 x 18 in (802 x 457 mm)	29960	29939	29965	14/6
SpillSlope® steel shelf	17, 30 & 45 gallon (64, 114 & 170 L) - 43 in W (1092 mm)	39.375 x 14 in (1000 x 356 mm)	29958	29937	29962	11/5
SpillSlope® steel shelf	54 gallon (204 L) deep slimline	19.625 x 29 in (498 x 737 mm)	—	29941	29907	11/5
SpillSlope® steel shelf	60 gallon (227 L) - 34 in W (864 mm)	30.375 x 29 in (771 x 737 mm)	29980	29944	29961	20/9
SpillSlope® steel shelf	90 gallon (341 L) - 43 in W (1092 mm)	39.375 x 29 in (1000 x 737 mm)	—	29945	29972	—
Wall mount kit	4 gallon (15 L) countertop	—	25951	—	—	4/2
Wall mount kit	12 & 17 gallon (45 & 64 L) piggyback	—	25950	—	—	5/3
Tray for cabinet top	17, 30 & 45 gallon (64, 114 & 170 L) - 43 in W (1092 mm)	43.5625 x 18.5625 in (1106 x 471 mm)	—	—	25933	6/3

Description	Dimensions W x D	Model No	Ship Wt lb/kg
Label pack (replacement/retrofit) with "Hazardous—Keep Fire Away" warning and 10 content ID labels	—	29017	1/0.45
Single label: "Lithium-Ion Battery Storage Cabinet"	12 in W x 3.5 in H (305 x 89 mm)	29018	1/0.45



Thermoplastic coating provides superior protection against corrosion from drips and off-gassing from harsh chemicals.



8837272



8831022



8849022

ChemCor® Lined Safety Cabinets for Corrosives

Superior corrosion protection combined with fire protection in a single cabinet

- 100% seamless thermoplastic coating inside the cabinet.
- Double-wall, 18-gauge (1-mm) welded steel construction.
- 2-in (51-mm) leakproof containment sump.

Get complete protection from harsh acids and corrosive chemicals plus the durability and fire protection of Justrite steel cabinets in a single unit. Unique, flame-coated, nonporous thermoplastic coating lines walls, ceiling, sump, inside doors, and shelves for superior protection from rust and corrosion. Specifically formulated powder-coat finish on cabinet exterior provides long life and extra resistance to deterioration from harsh chemicals.

All ChemCor® Cabinets include two labels—"Base" or reflective Haz-Alert™ "Acid"—to be placed by the end user. SpillSlope® shelves adjust on 3-in (77-mm) centers to accommodate a wide variety of containers. Three-point stainless steel bullet latch provides fail-safe, positive door closure. U-Loc™ handle comes with double key set and accepts optional padlock for added security. Other features include dual vents with flame arresters, grounding connector, and adjustable leveling feet.

Under fume hood cabinets feature a 4-in (102-mm) high x 3-in (77-mm) deep toe kick that allows the user to stand closer to the hood which means less leaning and better ergonomics. Cabinet height of 35-3/4-in (908-mm) includes leg levelers installed and extended 5/8-in (15.9-mm).

Under counter (22-gal/83-L) free-standing cabinets feature a smaller toe kick that measures 3-1/2-in (89-mm) high x 2-1/2-in (64 mm) deep. Free-standing 30-gallon (114-L) models No. 8930022 and 8930222 include an extra polyethylene work tray which can be used as a handy work surface on the top of the cabinet.



1. Internal ChemCor® coating guards against deterioration from spills and off-gassing from harsh chemicals. Seam-free, non-porous surface resists stains and cleans easily.
2. Fusible link on self-closing models melts in the event of a fire to automatically close doors if inadvertently left open.


10 Year
 Limited Warranty

ChemCor® Lined Under Fume Hood Acid Cabinets

Capacity Gal/L	Number of Doors and Style	Dimensions H x W x D		Adjustable Shelves	Approv/Lstg Regulation†	Silver Model No	Blue Model No	Lt Neutral Model No	Ship Wt lb/kg
		Exterior	Interior						
15/57	1 door, right hinge, manual	35.75 x 24 x 21.625 in 908 x 610 x 549 mm	26.531 x 20.77 x 18.327 in 674 x 528 x 466 mm	1	FM,A9	8825042	8825022	8825072	135/61
	1 door, left hinge, manual				FM,A9	8825142	8825122	8825172	
	1 door, right hinge, self-close				FM,A9	8825242	8825222	8825272	136/62
	1 door, left hinge, self-close				FM,A9	8825342	8825322	8825372	
19/72	2 door, manual	35.75 x 30 x 21.625 in 908 x 762 x 549 mm	26.531 x 26.77 x 18.327 in 674 x 680 x 466 mm	1	FM,A9	8831042	8831022	8831072	176/80
	2 door, self-close				FM,A9	8831242	8831222	8831272	176/80
23/87	2 door, manual	35.75 x 36 x 21.625 in 908 x 914 x 549 mm	26.531 x 32.77 x 18.327 in 674 x 832 x 466 mm	1	FM,A9	8837042	8837022	8837072	186/84
	2 door, self-close				FM,A9	8837242	8837222	8837272	187/85
31/117	2 door, manual	35.75 x 48 x 21.625 in 908 x 1219 x 549 mm	26.531 x 44.77 x 18.327 in 674 x 1137 x 466 mm	1	FM,A9	8849042	8849022	8849072	240/109
	2 door, self-close				FM,A9	8849242	8849222	8849272	

†See inside front cover for Approval and Compliance Key.


10 Year
 Limited Warranty

ChemCor® Lined Acid Cabinets - Free Standing

Capacity Gallons/Liters	Number of Doors and Style	Dimensions H x W x D		Adjustable Shelves	Color	Approv/Lstg Regulation†	Model No	Ship Wt lb/kg
		Exterior	Interior					
30/114	2 door, manual	44 x 43 x 18 in 1118 x 1092 x 457 mm	39.625 x 39.5 x 14.562 in 1006 x 1003 x 370 mm	1	Blue	FM,A9	8930022	241/109
	2 door, self-close					FM,A9	8930222	251/114
	1 bi-fold sliding, self-close					FM,A9	8930822	246/112
45/170	2 door, manual	65 x 43 x 18 in 1651 x 1092 x 457 mm	60.5 x 39.5 x 14.562 in 1537 x 1003 x 370 mm	2	Blue	FM,A9	8945022	323/147
	2 door, self-close					FM,A9	8945222	322/146
	1 bi-fold sliding, self-close					FM,A9	8945822	325/147
60/227	2 door, manual	65 x 34 x 34 in 1651 x 864 x 864 mm	60.5 x 30.75 x 30.34 in 1537 x 781 x 771 mm	2	Blue	FM,A9	8960022	388/176
	2 door, self-close					FM,A9	8960222	400/181

Slimline Safety Cabinets

22/83	1 door, manual	65 x 23.25 x 18 in 1651 x 591 x 457 mm	60.5 x 20 x 14.562 in 1537 x 508 x 370 mm	3	Blue	FM,A9	8922022	211/96
	1 door, self-close					FM,A9	8922222	214/97

Countertop and Compac Safety Cabinets

4/15	1 door, manual, countertop	22 x 17 x 17 in 559 x 432 x 432 mm	18.5 x 13.75 x 13.75 in 470 x 349 x 349 mm	1	Blue	A9	8904022	68/31
	1 door, self-close, countertop					A9	8904222	70/32
12/45	1 door, manual, compac	35 x 23.25 x 18 in 889 x 591 x 457 mm	30.5 x 20 x 14.562 in 775 x 508 x 370 mm	1	Blue	FM,A9	8912022	137/62
	1 door, self-close, compac					FM,A9	8912222	137/62

Undercounter Safety Cabinets

22/83	2 door, manual	35 x 35 x 22 in 889 x 889 x 559 mm	27.375 x 31.75 x 18.75 in 695 x 806 x 476 mm	1	Blue	FM,A9	8923022	200/91
	2 door, self-close					FM,A9	8923222	199/90

Piggyback Safety Cabinets

12/45	2 door, manual	18 x 43 x 18 in 457 x 1092 x 457 mm	13 x 39.5 x 14.562 in 330 x 1003 x 370 mm	0	Blue	FM,A9	8913022	137/62
	2 door, self-close					FM,A9	8913222	142/64
17/64	2 door, manual	24 x 43 x 18 in 610 x 1092 x 457 mm	19.5 x 39.5 x 14.562 in 495 x 1003 x 370 mm	1	Blue	FM,A9	8917022	171/78
	2 door, self-close					FM,A9	8917222	175/79

†See inside front cover for Approval and Compliance Key.

Extra Accessories

Description	Fits Cabinet Styles	Dimensions W x D	Model No	Ship Wt lb/kg
ChemCor® SpillSlope® steel shelf	15 gallon (57 L) under fume hood	20.125 x 18 in (511 x 457 mm)	29934	12/5
ChemCor® SpillSlope® steel shelf	19 gallon (72 L) under fume hood	26.125 x 18" (664 x 457 mm)	29930	13/6
ChemCor® SpillSlope® steel shelf	23 gallon (87 L) under fume hood	32.5 x 18" (826 x 457 mm)	29940	11/5
ChemCor® SpillSlope® steel shelf	31 gallon (117 L) under fume hood	44.333 x 18" (1130 x 457 mm)	29948	16/7

**Need a custom-made cabinet?**

Configure a cabinet to meet your specific application. Visit justrite.com/custom to learn more. Complete a Custom Cabinet Form (PDF) and get started today.

**For protection when storing harsh, non-flammable corrosives . . .**

Justrite's 100% polyethylene cabinets are the solution—available for undercounter or countertop use. See page 16 for details.

Polyethylene Cabinet for Corrosive Chemicals **NEW**

Store acids or bases with confidence in this sturdy, completely metal-free poly cabinet, and never worry about corrosion

- Large interior with adjustable shelf offers high-capacity storage
- Counter-height top doubles as a convenient work surface
- Seamless, leakproof sump captures dangerous corrosive spills

Safely store strong acids such as hydrochloric, sulfuric, or nitric acid; or bases such as sodium, potassium, or calcium hydroxide in this durable, HDPE (high-density polyethylene) cabinet. With no metal parts to corrode, this cabinet holds up to 36, 2.5-liter bottles, and offers chemical resistance against spills or potential damaging vapors when storing acids or bases. The shelf adjusts on 3-inch (76-mm) increments, and has a load capacity of 125-lbs (57-kgs). A removable yet sturdy sump cover, which also serves as a bottom shelf, conceals the fully integrated, leakproof sump with an 8.5-gal (32-L) capacity. Doors accept a padlock (not included) for added security.

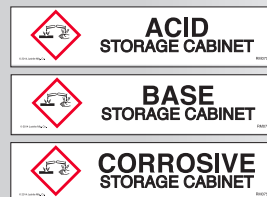
Use cabinet for stand-alone storage for access to grooved top work surface. For undercounter use, the recessed toe kick allows the user to stand closer to the counter for improved ergonomics. Expand capacity without taking up additional floor space by stacking two cabinets. Four pre-formed vent locations at rear provide a guide for an aftermarket vent kit (not included) in the event the application requires a pressurized vapor removal system.



24180



Free-standing safe storage for harsh acids, or use undercounter for convenient access.



3 application specific labels provide for segregation of chemicals included on both cabinet styles.



1 Year
Limited Warranty

Description	Capacity	Number of Doors	Nominal Dimensions H x W x D		Adjustable Shelves	Shelf Load lb/kg	Model No	Ship Wt lb/kg
			Exterior	Interior				
Stand-alone polyethylene cabinet	Thirty-six, 2.5-liter bottles	2 door	35 x 36 x 25 in 889 x 914 x 635 mm	28 x 31.25 x 18 in 711 x 794 x 457 mm	1	125/57	24180	106/48
Replacement polyethylene center shelf for 24180	—	—	33.375 W x 20.375 D in 848 W x 518 D mm	—	—	125/57	24103	10/5

Countertop Polyethylene Cabinet for Corrosives **NEW**

Point-of-use convenience for small quantities of chemicals

Safely store up to two 4-liter bottles of acids or bases in this durable, compact cabinet. Never worry about corrosion—completely metal-free polyethylene design offers excellent chemical resistance against spills or damaging vapors. Includes two polyethylene spill trays, use one for inside to contain leaks and remove for easy cleaning. Store the extra tray under the cabinet, and remove for use as a handy work top. Hinge door from either side for best worktop utilization—accepts optional padlock for security.



24080



Compact design offers placement on lab counters for access to frequently used chemicals.

1 Year
Limited Warranty

Description	Capacity	Number of Doors	Nominal Dimensions H x W x D		Adjustable Shelves	Shelf Load lb/kg	Model No	Ship Wt lb/kg
			Exterior	Interior				
Countertop polyethylene cabinet	Two, 4-liter bottles	1 door	19.75 x 14.25 x 17.125 in 502 x 362 x 435 mm	14.5 x 11 x 13 in 369 x 280 x 330 mm	—	—	24080	20/9

Wood Laminate Acid Cabinets

Durable and highly chemical-resistant

Safely store highly corrosive liquids such as phenol, nitric acid and sulfuric acid in these wood laminate storage cabinets. Long lasting wood construction along with stainless steel handles and hinges provide exceptional resistance to corrosion from harsh acids. Shelf adjusts on 1-1/4-in (32-mm) centers to accommodate a wide variety of containers. Cabinets include adjustable leg levelers, Haz-Alert™ reflective labels, and double key set for safety and security.

Countertop model 24120 is ideal for smaller quantities used at workbench level. Use the undercounter model 24140 as a free standing piece. It includes a removable, easy-to-clean polyethylene work surface top that is recessed 5/8-in (16-mm) to help contain incidental leaks.



1 Year
Limited Warranty

Capacity	Number of Doors and Style	Dimensions H x W x D		Adjustable Shelves	Model No	WHS	Ship Wt lb/kg
		Exterior	Interior				
Six, 2.5 liter bottles	2 door, countertop	18.5 x 24 x 16 in 470 x 610 x 406 mm	16 x 22.488 x 15.228 in 406 x 571 x 387 mm	0	24120	-	52/24
Thirty-six, 2.5 liter bottles	2 door, stand alone	35.75 x 36 x 22 in 908 x 914 x 559 mm	29.496 x 34.488 x 20.858 in 749 x 876 x 530 mm	1	24140	-	181/82
Forty-nine, 2.5 liter bottles		60 x 42 x 17.875 in 1524 x 1067 x 454 mm	54.511 x 40.488 x 17.118 in 1385 x 1028 x 435 mm		24150	276/125	

Note #24140 height dimension includes 0.75-in (19-mm) top. For undercounter usage, remove top for 22-in (559-mm) depth and adjust leg levelers which extend up to 0.75-in (19-mm).

Extra Accessories

Description	Exterior Dimensions W x D	Model No	Ship Wt lb/kg
Wood shelf and clips for 24140	34 x 16.875 in (864 x 429 mm)	24168	18/8
Wood shelf and clips for 24150	40 x 13.875 in (1016 x 352 mm)	24167	19/9

Solid Polyethylene Acid Cabinets

Sturdy, smooth construction in an attractive design

- Suitable for highly aggressive liquids—no metal parts to corrode.
- Three-point door latch on larger units offer secure closure and vapor control.
- Toe kick on undercounter model allows user to stand closer to counter—less leaning, better ergonomics.



1 Year
Limited Warranty

Solid polyethylene white acid cabinets have excellent chemical resistance to handle the most corrosive chemicals. A protective, all-welded bottom sump and a clean, sleek design complement any laboratory settings. Fully welded, liquid-tight 2-in (51-mm) sump contains accidental spills and makes clean up a snap. Shelf on larger units adjust on 3-in (76-mm) center. Door accepts a padlock for security.

Capacity	Number of Doors and Style	Dimensions H x W x D		Adjustable Shelves	Model No	Ship Wt lb/kg
		Exterior	Interior			
Six, 2.5 liter bottles	1 door, countertop	22 x 17 x 17 in 559 x 432 x 432 mm	21.5 x 16.5 x 16.25 in 546 x 419 x 413 mm	-	24004	26/12
Thirty-six, 2.5-liter bottles	2 door, undercounter	35.75 x 36 x 21.75 in 908 x 914 x 552 mm	35.25 x 35.5 x 20.875 in 895 x 902 x 530 mm	1	24010	160/73
Thirty-six, 2.5-liter bottles	2 door, stand alone	36.75 x 36 x 21.75 in 933 x 914 x 552 mm	35.5 x 35.5 x 20.875 in 902 x 902 x 530 mm		24015	

Extra Accessories

Description	Fits Cabinet Sizes	Dimensions W x D	Model No	Ship Wt lb/kg
Solid polyethylene shelf with shelf pegs	36 in (914mm) W	34.75 x 20.5 in (883 x 521 mm)	24115	20/9



Manifold kit provides a convenient, cost effective way to collect waste from multiple HPLC machines.



HPLC Safety Disposal Cans

Quick-disconnect fittings and coalescing carbon filters keep laboratory and personnel safe with a compliant, environmentally-friendly solution to waste collection

Ideal for HPLC waste applications:

- Vapor and fire protection • Safeguard against accidental spills
- Maximize safety and convenience

Hands-free solvent collection: Solvent flows freely from your process into the container through tubing making it suitable for either pump-fed or gravity-flow HPLC waste methods. Two disconnect fittings, one intake and one vent, eliminate back pressure in liquid flow disposal line and provide controlled handling of vapor.

Durability and safety: Translucent polyethylene container allows quick visual inspection of liquid level. Pouring spout is equipped with a stainless steel flame arrester, which reliably dissipates heat to prevent flashback ignition. Spring-loaded, sealed lid automatically vents to guard against explosion. Control odors with a coalescing/carbon filter.

Quick-Disconnect system: Easy-on, easy-off mechanism offers detachment of the can from the process without leaks, drips or vapor release. Once disconnected, the container is automatically sealed to prevent spills.



Coalescing carbon filter
Optional filters are for use with only round style cans.

Optional manifold.....

Valved quick-disconnect fittings automatically close when decoupled to prevent vapor or liquid release.

Translucent color lets you check liquid level at a glance.

Oval-style maximizes storage space and features one-handed pouring from narrow 1-7/16-in (36-mm) spout.

Stainless-steel fittings offer PTFE O-rings on standard containers. Also available with EPDM or Viton O-ring seals on customized cans.

Easy-carrying handle with fixed position latch keeps spring loaded cover open for convenient pouring during disposal.

Economically priced polypropylene barbed fittings offer EPDM O-rings.

Large 3-5/8-in (92-mm) opening facilitates controlled pouring into larger vessels for proper hazardous waste disposal. Spout is equipped with a stainless steel flame arrester.

Meets OSHA, NFPA and EPA requirements.

Create custom cans, with up to eight ports, for multiple HPLC units. Call our customer service team at 800-798-9250 to learn more.



Capacity	Dimensions OD x H	Fitting No 1 for Liquid Intake			Fitting No 2 for Vapor Release			Model No	Ship Wt lb/kg
		Material	O-Ring	Tubing* Size ID	Material	O-Ring	Tubing* Size ID		
1 gallon (4 L) oval can	7.75 x 5.25 x 12.75 in 197 x 133 x 324 mm	Polypropylene	EPDM	0.375 in 10 mm	Polypropylene	EPDM	0.375 in 10 mm	12160	2/1
2 gallon (7.5 L) round can	12 x 14.75 in 305 x 375 mm	Stainless Steel	PTFE		Stainless Steel	PTFE		TF12752	7/3
2 gallon (7.5 L) round can		Polypropylene	EPDM		Polypropylene	EPDM		PP12752	
2 gallon (7.5 L) round can		Stainless Steel	PTFE		Stainless Steel	PTFE		TF12755	
5 gallon (19 L) round can	12 x 20 in 305 x 508 mm	Polypropylene	EPDM	Polypropylene	EPDM	PP12755	11/5		
5 gallon (19 L) round can		Stainless Steel	PTFE	Stainless Steel	PTFE	TF12755			
5 gallon (19 L) round can		Polypropylene	EPDM	Polypropylene	EPDM	PP12755			
5 gallon (19 L) round can with faucet no. 08916		Stainless Steel	PTFE	0.25 in 6 mm	Stainless Steel	PTFE		0.25 in 6 mm	12770
5 gallon (19 L) round can with faucet no. 08916	Stainless Steel	PTFE	0.375 in 10 mm	Stainless Steel	PTFE	0.375 in 10 mm	12771		

*Tubing not supplied with containers.



Coalescing Carbon Filters

Use with HPLC cans to minimize odor, and capture 99% of liquid particulates released in the form of gaseous vapor. Vent filter snaps conveniently into the quick-disconnect fitting. Carbon filter cartridge color indicator beads (top portion) changes from purple to black to indicate when replacement is necessary. Replace the coalescing filter (bottom portion) after three or four carbon filter cycles. Use filters with all 2-gallon (7.5-L), 5-gallon (19-L) and custom-built quick-disconnect cans; not for use with oval style can. Meets EPA 40 CFR 264.173.



Filter Replacement Window



28161

28162

Description	Attachment/Use With	Model No	Ship Wt lb/kg
Coalescing/carbon filter combo with stainless steel fittings	Disconnect cans with stainless steel fittings	28162	2/1
Coalescing/carbon filter combo with polypropylene fittings	Disconnect cans with polypropylene fittings	28161	

Carbon Filter Replacements

Description	Attachment/Use With	Model No	Ship Wt lb/kg
Colormetric/carbon filter 3-Pack replacements	28162 or 28161 Coalescing/carbon filter	28157	2/1

NOTE: When using HPLC carbon filter with FM approved Justrite safety disposal can, the Justrite safety disposal container has not been FM approved or tested in assembly with the HPLC filter attached. However, the container does comply with US OSHA 1910 and NFPA Code 30 requirements, both with and without the HPLC filter. Do not transport safety container while carbon filter is attached.



28157

HPLC PTFE Manifold and Compression Fittings

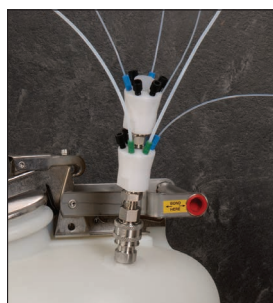
Enables up to six waste lines (per manifold) from HPLC processes to be fed into a single intake fitting. Safety container with manifold installed is OSHA compliant and meets NFPA Code 30. Use on round containers; not for use on oval style can.



28178



28189



Manifold no. 28177 with stacker no. 28179 and tubing connector package nos. 28188 and 28189.

Description	Attachment/Use With	Model No	Ship Wt lb/kg
PTFE manifold with stainless steel fitting	Containers with stainless steel fittings	28177	2/1
PTFE manifold with polypropylene fitting	Containers with polypropylene fittings	28178	
PTFE manifold with stainless "stacker" connector	28177 or 28178	28179	
OD 0.0625 in hard wall ETFE tubing compression fittings with ferrules (package of six - blue)		28188	
OD 0.125 in hard wall ETFE tubing compression fittings with ferrules (package of six - green)		28189	
OD 2 mm hard wall ETFE tubing compression fittings with ferrules (package of six - yellow)		28121	
OD 2.5 mm hard wall ETFE tubing compression fittings with ferrules (package of six - orange)		28122	
OD 3 mm hard wall ETFE tubing compression fittings with ferrules (package of six - red)		28123	

Polytetrafluoroethylene (PTFE) is a synthetic fluoropolymer. Ethylene tetrafluoroethylene (ETFE) is a fluorine based plastic.



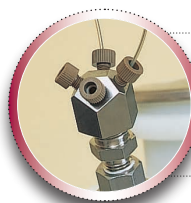
84003 with TF12755

Spill Basin

Durable polyethylene basin keeps work area clean around HPLC cans and captures any inadvertent leakage from HPLC inflow tubes.

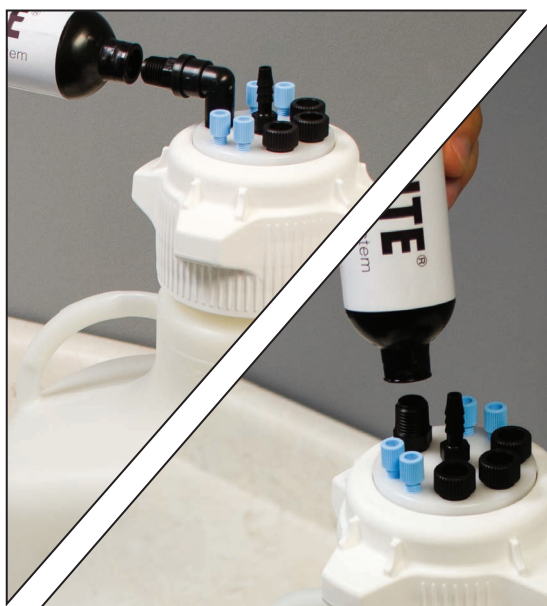
1 Year
Limited Warranty

Description	Dimensions W x L x H	Model No	Ship Wt lb/kg
5 gallon (19 L)	14.875 x 14.875 x 7.625 379 x 379 x 194 mm	84003	4/2



Need a stainless steel manifold?

For containers with stainless steel fittings, use a stainless steel manifold that accepts 4 waste lines. Visit our website and search model no. 28168.



Improve air quality in labs by using a carbon exhaust filter which traps solvent vapors—install in horizontal or vertical position.



12807

12808

VaporTrap™ Solvent Waste Systems NEW

Prevent harmful HPLC vapors from being released into the air

- Carbon filter prevents volatile organic compound vapors from being released into the air
- Two-piece cap design eliminates the need to disconnect tubing from the adapter to install a closed cap
- High-density polyethylene (HDPE) carboy features rectangular ergonomic design, saving valuable bench space

Designed to collect waste from one or more HPLC machines, VaporTrap systems include carbon exhaust filters to trap potentially harmful vapors emitted from solvents, protecting workers from inhaling dangerous fumes. The closed, leakproof system design helps eliminate spills and provides an efficient way for disposing of volatile organic compound waste.

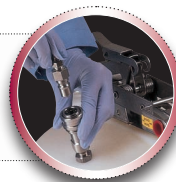
Polypropylene cap with acetal homopolymer adapter offers a wide range of tubing port configurations with and without hose barb ports. Adapter and durable HDPE carboy provide excellent chemical compatibility against aggressive solvents. Unique, convenient features include large top handles for an ergonomic full-hand grip for added safety when moving the carboy, and clear graduation marks with $\pm 5\%$ accuracy.

Each system includes an HDPE carboy, two 83-mm caps (one with ported adapter for waste collection and one closed for safe transport), various ports for waste tubing, one port for a carbon exhaust filter, one carbon exhaust filter, one straight adapter and one 90-degree adapter for filter, tube fittings, gasket, and plugs for unused ports.

Optional filter replacement indicator makes it easy to see when filter is saturated and requires replacement.

Need FM-approved containers?

Visit our website and search on HPLC safety cans, featuring a quick-disconnect system.



Tubing Sizing Guide for Ports

See Tubing Sizing Guide on page 24 to help determine port size needed.

Accessories

Description	Model No	Ship wt lb/kg
Replacement carbon exhaust filter, package of two. Filter size: 1.9 OD x 7"	12849	2/1
Carbon exhaust filter indicator, package of two	12952	1/1
Replacement fittings, six 1/8" fittings and six 1/4" plugs, one pack	12851	

1 Year
Limited Warranty

VaporTrap™ Solvent Waste Systems

Carboy Size	Nominal Dimensions* W x L x H	Material Type	Cap Size	1/8" Tubing OD Ports	1/4" Tubing OD Ports	1/4" or 3/8" Tubing ID Hose Barb Ports	Model No	Ship wt lb/kg
1.1 gallon (4 L)	6.1 x 6.1 x 15.75 in (155 x 155 x 400 mm)	HDPE	83 mm	6	—	—	12800	4/2
1.3 gallon (5 L)	5.2 x 8.7 x 18.75 in (132 x 221 x 476 mm)						12801	
2.6 gallon (10 L)	6.4 x 10.75 x 21.9 in (163 x 273 x 556 mm)						12802	
5.3 gallon (20 L)	8.1 x 13.6 x 26.7 in (206 x 345 x 678 mm)						12803	
1.1 gallon (4 L)	6.1 x 6.1 x 15.75 in (155 x 155 x 400 mm)	HDPE	83 mm	6	—	1	12805	4/2
1.3 gallon (5 L)	5.2 x 8.7 x 18.75 in (132 x 221 x 476 mm)						12806	
2.6 gallon (10 L)	6.4 x 10.75 x 21.9 in (163 x 273 x 556 mm)						12807	
5.3 gallon (20 L)	8.1 x 13.6 x 26.7 in (206 x 345 x 678 mm)						12808	
1.1 gallon (4 L)	6.1 x 6.1 x 15.75 in (155 x 155 x 400 mm)	HDPE	83 mm	4	3	—	12810	4/2
1.3 gallon (5 L)	5.2 x 8.7 x 18.75 in (132 x 221 x 476 mm)						12811	
2.6 gallon (10 L)	6.4 x 10.75 x 21.9 in (163 x 273 x 556 mm)						12812	
5.3 gallon (20 L)	8.1 x 13.6 x 26.7 in (206 x 345 x 678 mm)						12813	
1.1 gallon (4 L)	6.1 x 6.1 x 15.75 in (155 x 155 x 400 mm)	HDPE	83 mm	4	4	—	12815	4/2
1.3 gallon (5 L)	5.2 x 8.7 x 18.75 in (132 x 221 x 476 mm)						12816	
2.6 gallon (10 L)	6.4 x 10.75 x 21.9 in (163 x 273 x 556 mm)						12817	
5.3 gallon (20 L)	8.1 x 13.6 x 26.7 in (206 x 345 x 678 mm)						12818	
1.1 gallon (4 L)	6.1 x 6.1 x 15.75 in (155 x 155 x 400 mm)	HDPE	83 mm	4	3	1	12820	4/2
1.3 gallon (5 L)	5.2 x 8.7 x 18.75 in (132 x 221 x 476 mm)						12821	
2.6 gallon (10 L)	6.4 x 10.75 x 21.9 in (163 x 273 x 556 mm)						12822	
5.3 gallon (20 L)	8.1 x 13.6 x 26.7 in (206 x 345 x 678 mm)						12823	

*Note: Height includes filter oriented in horizontal position.

VaporTrap™ UN/DOT Solvent Waste Systems NEW

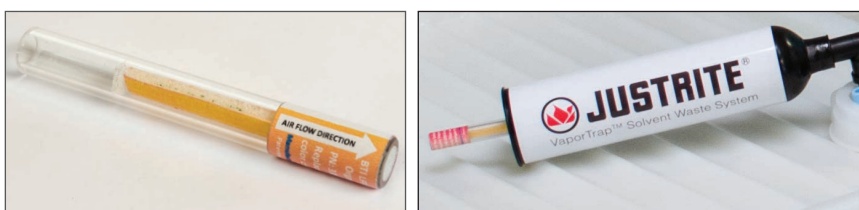
UN/DOT solvent waste system ensures safe transport of hazardous liquids

- UN/DOT certified carboy and closed cap for packaging group II, and hazardous chemicals
- Carbon filter prevents volatile organic compound vapors from being released into the air
- Two-piece cap design eliminates the need to disconnect tubing from the adapter to install a closed cap

These UN/DOT solvent waste systems provide liquid waste collection and disposal for single or multiple HPLC machines. Carbon exhaust filter traps potentially harmful vapors emitted from solvents, protecting workers from inhaling dangerous fumes. UN/DOT certified carboy and 70-mm closed cap (UN Rating 3H1/Y1.8/100) are designed for single-use and easy disposal of laboratory waste.

The high-density polyethylene (HDPE) cap with acetal homopolymer adapter offers a wide range of top connection options. Select tubing port configurations to accommodate various tubing sizes and create a closed system preventing leaks or spills. Heavy duty HDPE carboy features a large top handle for an ergonomic full-hand grip, and provides excellent chemical compatibility against aggressive solvents.

Each system includes an HDPE UN/DOT container, two 70-mm caps (one with ported adapter for waste collection and one closed for safe transport), various ports for waste tubing, one carbon exhaust filter, one port for carbon exhaust filter, one straight and one 90-degree filter adapter, tube fittings, EPDM gasket, and plugs for unused ports.



Optional filter indicator makes it easy to see when filter is saturated and needs replacement.



Safely dispose of laboratory waste in these durable, United Nations/Department of Transportation certified carboys—simply remove cap with filter and replace with closed cap for transport.



12846

12841

VaporTrap™ UN/DOT Solvent Waste Systems

Carboy Size	Nominal Dimensions* W x L x H	Material Type	Cap Size	1/16" Tubing OD Ports	1/8" Tubing OD Ports	1/4" Tubing OD Ports	1/4" or 3/8" Tubing ID Hose Barb Ports	Model No	Ship wt lb/kg
3.6 gallon (13.5 L)	9.25 x 11.3 x 13.1 in (235 x 287 x 333 mm)	HDPE	70 mm	6	—	—	—	12836	4/2
5.3 gallon (20 L)	9.25 x 11.3 x 17.5 in (235 x 287 x 445 mm)							12837	5/2
3.6 gallon (13.5 L)	9.25 x 11.3 x 13.1 in (235 x 287 x 333 mm)	HDPE	70 mm	—	6	—	—	12838	4/2
5.3 gallon (20 L)	9.25 x 11.3 x 17.5 in (235 x 287 x 445 mm)							12839	5/2
3.6 gallon (13.5 L)	9.25 x 11.3 x 13.1 in (235 x 287 x 333 mm)	HDPE	70 mm	—	6	—	1	12840	4/2
5.3 gallon (20 L)	9.25 x 11.3 x 17.5 in (235 x 287 x 445 mm)							12841	5/2
3.6 gallon (13.5 L)	9.25 x 11.3 x 13.1 in (235 x 287 x 333 mm)	HDPE	70 mm	—	4	3	—	12842	4/2
5.3 gallon (20 L)	9.25 x 11.3 x 17.5 in (235 x 287 x 445 mm)							12843	5/2
3.6 gallon (13.5 L)	9.25 x 11.3 x 13.1 in (235 x 287 x 333 mm)	HDPE	70 mm	—	4	4	—	12844	4/2
5.3 gallon (20 L)	9.25 x 11.3 x 17.5 in (235 x 287 x 445 mm)							12845	5/2
3.6 gallon (13.5 L)	9.25 x 11.3 x 13.1 in (235 x 287 x 333 mm)	HDPE	70 mm	—	4	3	1	12846	4/2
5.3 gallon (20 L)	9.25 x 11.3 x 17.5 in (235 x 287 x 445 mm)							12847	5/2

*Note: Height includes filter oriented in horizontal position.

UN/DOT Approved Carboys

Capacity	Nominal Dimensions W x L x H	Material Type	Cap Size	Model No	Ship wt lb/kg
3.6 gallon (13.5 L)	9.25 x 11 x 11 in (235 x 279 x 279 mm)	High-density polyethylene	70 mm	12950	3/1
5.3 gallon (20 L)	9 x 11 x 15.5 in (229 x 279 x 394 mm)			12951	4/2

1 Year
Limited Warranty

Accessories

Description	Model No	Ship wt lb/kg
Replacement carbon exhaust filter, package of two. Filter size: 1.9 OD x 7"	12849	2/1
Carbon exhaust filter indicator, package of two	12952	1/1
Replacement fittings, six 1/8" fittings and six 1/4" plugs, one pack	12851	



Ergonomic, space-saving rectangular design with molded hand grips at the base and large top handles make it easy to carry, lift, and pour.

High-Density Polyethylene (HDPE) Carboys NEW

Excellent chemical compatibility for storing and dispensing solvents, buffers, reagents and powders

- Interchangeable caps and adapters provide top connection flexibility
- Rectangular ergonomic design saves valuable bench space
- Material, volume, and metric graduation marks imprinted on carboys
- Constructed from USP Class VI, FDA grade materials

The ergonomic design features large handles and base with molded hand-grip, allowing you to easily lift and pour. Made of highly durable Class VI, FDA grade HDPE resin, they offer excellent chemical resistance and are ideal for various solvents, buffers, reagents, powders, and solids. Available in 83-mm and 120-mm sizes, the included polypropylene cap with platinum-cured silicone gasket provides a tight spill-proof seal. The larger 120-mm neck size allows you to reach into the carboy for quick and easy cleaning. Choose an amber carboy for light-sensitive applications.

Carboys are compatible with interchangeable adapters, and on select models, spigot fittings. Leakproof polypropylene spigots include large spigot lever with two flow rates, continuous or manual, and features an internal luer taper that fits a male barb adapter. See page 24 to select from a wide range of adapters with molded or quick connect hose barb configurations for top connection flexibility, and additional spigots and versatile barbs for alternate bottom hosing connection options.



Exclusive cap designed with molded 4-point grip assists make it easy to open and tightly close for a leakproof seal.

1 Year
Limited Warranty

High-Density Polyethylene Carboys

Capacity	Nominal Dimensions* W x L x H	Cap Size	Model No	Ship wt lb/kg
High-Density Polyethylene Carboys				
0.7 gallon (2.5 L)	5 x 6.7 x 12 in (127 x 170 x 305 mm)	83 mm	12907	2/1
1.3 gallon (5 L)	5.2 x 8.7 x 16.3 in (132 x 221 x 414 mm)		12908	3/1
2.6 gallon (10 L)	6.4 x 10.75 x 19.5 in (163 x 273 x 495 mm)		12909	4/2
5.3 gallon (20 L)	8.1 x 13.6 x 24.2 in (206 x 345 x 615 mm)	120 mm	12910	7/3
	8.1 x 13.6 x 25.2 in (206 x 345 x 640 mm)		12911	7/3
10.6 gallon (40 L)	9.8 x 17.1 x 30.4 in (249 x 434 x 772 mm)		12912	11/5
19.8 gallon (75 L)	14.4 x 18.7 x 30 in (366 x 475 x 762 mm)		12913	18/8
High-Density Polyethylene Carboys with Spigots				
1.3 gallon (5 L)	5.2 x 12 x 16.3 in (132 x 305 x 414 mm)	83 mm	12914	3/1
2.6 gallon (10 L)	6.4 x 13 x 19.5 in (163 x 330 x 495 mm)		12915	4/2
5.3 gallon (20 L)	8.1 x 15.25 x 24.2 in (206 x 387 x 615 mm)		12916	7/3
	8.1 x 15.25 x 25.2 in (206 x 387 x 640 mm)	12917	7/3	
10.6 gallon (40 L)	9.8 x 18.75 x 30.4 in (249 x 476 x 772 mm)	12918	11/5	
High-Density Polyethylene Carboys, Amber				
0.7 gallon (2.5 L)	5 x 6.7 x 12 in (127 x 170 x 305 mm)	83 mm	12919	2/1
1.3 gallon (5 L)	5.2 x 8.7 x 16.3 in (132 x 221 x 414 mm)		12920	3/1
2.6 gallon (10 L)	6.4 x 10.75 x 24.2 in (163 x 273 x 615 mm)		12921	4/2
5.3 gallon (20 L)	8.1 x 13.6 x 25.2 in (206 x 345 x 640 mm)	120 mm	12922	7/3
10.6 gallon (40 L)	9.8 x 17.1 x 30.4 in (249 x 434 x 772 mm)		12923	11/5
High-Density Polyethylene Carboys, Amber, with Spigots				
1.3 gallon (5 L)	5.2 x 12 x 16.3 in (132 x 305 x 414 mm)	83 mm	12924	3/1
2.6 gallon (10 L)	6.4 x 13 x 19.5 in (163 x 330 x 495 mm)		12925	4/2
5.3 gallon (20 L)	8.1 x 15.25 x 25.2 in (206 x 387 x 640 mm)		120 mm	12926
10.6 gallon (40 L)	9.8 x 18.75 x 30.4 in (249 x 476 x 772 mm)	12927		11/5



Polypropylene Carboys NEW

Polypropylene construction allows for proper sterilization between uses

- Constructed from autoclavable USP Class VI, FDA grade materials
- Interchangeable caps and adapters provide top connection flexibility
- Rectangular ergonomic design saves valuable bench space

These polypropylene (PP) carboys feature large handles and base with molded grip allowing you to easily lift and pour. The material type and volume are printed on the outside of the carboy along with large, easy-to-read metric graduation marks that are certified to $\pm 5\%$ accuracy. Available in 83-mm and 120-mm sizes, the included PP cap with platinum-cured silicone gasket provides a tight spill-proof seal, and the larger 120-mm neck size allows you to reach into the carboy for quick and easy cleaning. Constructed from USP Class VI, FDA grade PP resin, the carboys provide good chemical compatibility when using with various reagents, buffers, and powders. For light sensitive applications and heat stability, choose the dark amber carboy. Sanitary neck options come without screw threads for easy cleaning. Polypropylene carboys can be autoclaved at 15 PSI and 250°F (121°C) for 20 minutes.

Carboys are compatible with interchangeable adapters, and on select models, spigot fittings. Leakproof polypropylene spigots include large spigot lever with two flow rates, continuous or manual, and features an internal luer taper that fits a male barb adapter. See page 24 to select from a wide range of adapters with molded or quick connect hose barb configurations for top connection flexibility, and additional spigots and versatile barbs for alternate bottom hosing connection options.

Need a clear carboy for aqueous solutions?

Visit our website and search on copolyester (PETG) carboys, available in four sizes.



Made from a hard, opaque material, dark amber carboys offer good chemical resistance and protection from light.



12928



12929



12930



12932



12938



12945

1 Year
Limited Warranty

Capacity	Nominal Dimensions* W x L x H	Cap Size	Model No	Ship wt lb/kg
Polypropylene Carboys				
0.7 gallon (2.5 L)	5 x 6.7 x 12 in (127 x 170 x 305 mm)	83 mm	12928	2/1
1.3 gallon (5 L)	5.2 x 8.7 x 16.3 in (132 x 221 x 414 mm)		12929	3/1
2.6 gallon (10 L)	6.4 x 10.75 x 19.5 in (163 x 273 x 495 mm)		12930	4/2
5.3 gallon (20 L)	8.1 x 13.6 x 24.2 in (206 x 345 x 615 mm)	120 mm	12931	7/3
	8.1 x 13.6 x 25.2 in (206 x 345 x 640 mm)		12932	7/3
10.6 gallon (40 L)	9.8 x 17.1 x 30.4 in (249 x 434 x 772 mm)		12933	11/5
19.8 gallon (75 L)	14.4 x 18.7 x 30 in (366 x 475 x 762 mm)		12934	18/8
Polypropylene Carboys with 3" Sanitary Neck				
2.6 gallon (10 L)	6.4 x 10.75 x 19.2 in (163 x 273 x 488 mm)	—	12935	4/2
5.3 gallon (20 L)	8.1 x 13.6 x 23.8 in (206 x 345 x 605 mm)		12936	7/3
10.6 gallon (40 L)	9.8 x 17.1 x 29 in (249 x 434 x 737 mm)		12937	11/5
Polypropylene Carboys with Spigots				
1.3 gallon (5 L)	5.2 x 12 x 16.3 in (132 x 305 x 414 mm)	83 mm	12938	3/1
2.6 gallon (10 L)	6.4 x 13 x 19.5 in (163 x 330 x 495 mm)		12939	4/2
5.3 gallon (20 L)	8.1 x 15.25 x 24.2 in (206 x 387 x 615 mm)		120 mm	12940
	8.1 x 15.25 x 25.2 in (206 x 387 x 640 mm)	12941		7/3
10.6 gallon (40 L)	9.8 x 18.75 x 30.4 in (249 x 476 x 772 mm)		12942	11/5
Polypropylene Carboys, Dark Amber				
1.3 gallon (5 L)	5.2 x 8.7 x 16.3 in (132 x 221 x 414 mm)	83 mm	12943	3/1
5.3 gallon (20 L)	8.1 x 13.6 x 25.2 in (206 x 345 x 640 mm)	120 mm	12945	7/3

*Note: Length includes spigot, where applicable.

Interchangeable Carboy Caps and Adapters NEW

- Quick-connect cap adapters for quick and easy port changes
- Two-piece open cap and adapter design prevents tube twisting when opening
- Polypropylene (PP) caps and adapters are autoclavable

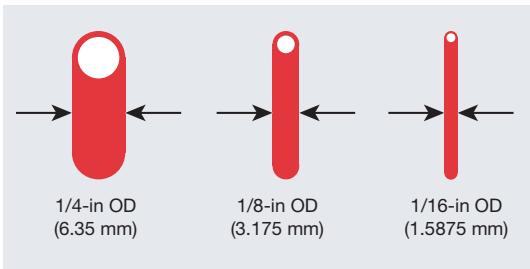
Leakproof, PP caps and interchangeable cap adapters provide a wide range of top connection configurations. Each cap is compatible with several adapters allowing you to change and configure carboy top connections based on your application requirements. Designed to be stackable, the caps feature large grips allowing you to easily open and tighten, and include platinum-cured silicone gaskets. Adapters are available with quick connect hose barb options including two, three, or four port combinations, as well as molded-in hose barb options, offering additional top connection flexibility. See pages 22 and 23 for compatible carboys. Polypropylene caps and adapters can be autoclaved at 15 PSI and 250°F (121°C) for 20 minutes.

Visit our website for nearly 40 other cap/adapter and spigot options.

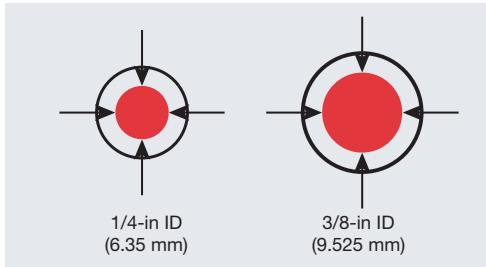


Twenty-four popular models meet a variety of applications.

Tubing Sizing Guide for Ports



For measuring OD for ports, place the tube next to each of the images to determine the correct size of the tubing.



For measuring ID for hose barb ports, place end of tube flat on image below and determine if the dark area is contained by the tubing.



Also use sizing guide for VaporTrap™ waste systems, pages 20-21.

1 Year
Limited Warranty

Description	Nominal Dimensions OD X H	Cap Size	Hose Barb Size	No of Quick Disconnects	Model No	Ship wt lb/kg		
Caps								
Closed cap, package of two	5 x 2.6 in (127 x 66 mm)	83 mm	—	—	12857	1/1		
Open cap with closed adapter, package of two	5 x 3 in (127 x 76 mm)		1/4 in (6.4 mm)		12858			
Open cap with two hose barbs and vent	5 x 4.6 in (127 x 117 mm)		1/2 in (12.7 mm)		12859			
Open cap with two hose barbs and vent			12860					
Closed cap, package of two	7.5 x 4 in (191 x 102 mm)	120 mm	—	—	12861	2/1		
Open cap with closed adapter, package of two	7.5 x 4.4 in (191 x 112 mm)		12862					
Adapters								
Closed adapter, clear top	3.2 x 1 in (81 x 25 mm)	83 mm	—	—	12868	1/1		
Adapter with two hose barbs	3.2 x 2.8 in (81 x 71 mm)		1/4 in (6.4 mm)		2		12869	
Adapter with two hose barbs			3/8 in (9.5 mm)				12870	
Adapter with three hose barbs			3/8 in (9.5 mm)		1/4 in (6.4 mm)		3	12871
Adapter with three hose barbs								12872
Adapter with four hose barbs			3/8 in (9.5 mm)		1/4 in (6.4 mm)		4	12873
Adapter with four hose barbs								12874
Adapter with two hose barbs and vent	3.2 x 1.9 in (81 x 48 mm)		1/4 in (6.4 mm)		—		12875	
Adapter with two hose barbs and vent			1/2 in (12.7 mm)				12876	
Closed adapter	4.7 x 2.1 in (119 x 53 mm)		120 mm		—		—	12877
Adapter with two hose barbs	4.7 x 3.7 in (119 x 94 mm)	1/4 in (6.4 mm)		2	12878			
Adapter with two hose barbs		3/8 in (9.5 mm)			12879			
Adapter with three hose barbs		1/4 in (6.4 mm)		3	12880			
Adapter with three hose barbs					3/8 in (9.5 mm)	12881		
Adapter with four hose barbs		1/4 in (6.4 mm)		4	12882			
Adapter with four hose barbs					3/8 in (9.5 mm)	12883		
Adapter, converts 83 mm adapters to 120 mm	4.7 x 1.7 in (120 x 43 mm)	—		—	12884			



Large opening with cap held open provides convenient filling and pouring.

Liquid Disposal Safety Cans

A better solution for the containment of liquid flammable or corrosive waste

- Durable poly in safety red or translucent white to easily detect liquid level.
- Current-carrying, patented carbon insert embedded in the container allows for proper grounding.

High-density polyethylene (HDPE) disposal cans provide superior chemical resistance and leak protection. Spring-loaded sealed cap, normally closed, automatically vents between 3 and 5 psig (0.2 and 0.35 bar). Stainless steel handle and hardware with latch-catch system hold the cap in the open position for easy filling and pouring. Large-mouth opening features a built-in stainless steel flame arrester to guard against outside ignition. The broad-base design provides stability and resists accidental tip over.

Model numbers 14265 and 14565 with built-in polyethylene fill gauge indicator pops up to warn you that the container is almost full.



14762



14265



12754



12772

1 Year
Limited Warranty

Description and Capacity	Dimensions OD x H	Approv/Lstg Regulation†	Red Model No	White Model No	Ship Wt lb/kg
2 gallon (7.5 L) polyethylene can with stainless steel hardware with 08530 fill gauge built-in	12 x 14.75 in 305 x 375 mm	—	14265	—	7/3
2 gallon (7.5 L) polyethylene can with stainless steel hardware		FM	14762	12751	
5 gallon (19 L) polyethylene can with stainless steel hardware			14765	12754	
5 gallon (19 L) polyethylene can with stainless steel hardware with 08530 fill gauge built-in	12 x 20 in 305 x 508 mm	—	14565	—	11/5
5 gallon (19 L) polyethylene can with stainless steel hardware and faucet		FM	—	12772	12/6
Replacement flame arrester, stainless steel	—	—	11406	11406	2/1

†See inside front cover for Approval and Compliance Key.

Countertop Lab Tray

Polyethylene tray catches drips or spills and keeps counter clean and uncontaminated. Slightly curved edge and ribbed bottom keeps containers from sitting in pooled liquid.

1 Year
Limited Warranty

Description	Nominal Dimensions L x D	Model No	Ship Wt lb/kg
Countertop lab tray	31.125 x 18.5 in 791 x 470 mm	29965	4/2



Squeeze Bottles

Squeeze bottles made of polyethylene with a stainless steel wire, provide safe dispensing of flammable liquids directly on small components or subassemblies with a minimum of over-spray. Squeezing the bottle produces a fine stream of liquid. Stem can be shaped to dispense into hard-to-get areas. Squeeze bottles are intended for daily use only.

Store partially filled squeeze bottles in a closed container...

Visit our website and search for model no. 27705 mixing tank. It holds nine 16 oz. or seven 32 oz. squeeze bottles.



1 Year
Limited Warranty

Description and Capacity	Dimension OD x H	Model No	Ship Wt lb/kg
1 pint (0.5 L) polyethylene squeeze bottle with flexible dispensing tube, translucent	3 x 7.5 in 76 x 191 mm	14009	2/1
1 quart (1 L) polyethylene squeeze bottle with flexible dispensing tube, translucent	3.5 x 9.125 in 89 x 232 mm	14011	



Simply squeeze bottle to target liquid directly onto cleaning cloths or parts.

Bottle Jacket

Two-piece bottle jacket provides added protection of a polyethylene cover around chemical glass bottles. Jacket acts as a shock absorber to minimize breakage and spills due to bumps or falls. One-gallon (4-liter) bottle fits into the bottom half of the jacket and lid twists on securely for safe pouring. Translucent color aids in detecting liquid level.

1 Year
Limited Warranty

Description and Capacity	Dimension OD x H	Model No	Ship Wt lb/kg
Translucent polyethylene bottle jacket for 1 gallon (4 L) bottles	6 x 14 in 152 x 356 mm	12009	1/1



12009

Self-Closing Containers for Non-flammable Corrosives

Improve safety and ensure containment with secure laboratory containers

Translucent high-density polyethylene resists acids and caustics. The 2- to 5-gallon (7.5- to 19-L) sizes have fixed position on handle, which allows lid to stay open for easy filling. Spring-close cap provides a tight seal. Flame arrester-free spout allows quick pouring of non-flammable corrosives. Oval containers have trigger handle for one-handed pouring and make the most of storage capacity.



12260



12762



12161

1 Year
Limited Warranty

Description and Capacity	Dimensions OD x H	Dimensions Spout Dia	Model No	Ship Wt lb/kg
1 gallon (4 L) oval polyethylene container with stainless steel hardware	4.625 x 7.625 x 12.75 in 117 x 194 x 324 mm	1.45 in 37 mm	12161	2/1
2 gallon (7.5 L) wide mouth polyethylene container with stainless steel hardware	12 x 14.75 in 305 x 375 mm	3.625 in 92 mm	12762	
2.5 gallon (9.5 L) polyethylene container with stainless steel hardware	10.75 x 15.25 in 273 x 387 mm	1.45 in 37 mm	12260	7/3
5 gallon (19 L) wide mouth polyethylene container with stainless steel hardware	12 x 20 in 305 x 508 mm	3.625 in 92 mm	12765	

Type I Poly Safety Cans

Chemical-resistant HDPE cans offer safe storage for flammable corrosives

Designed with a durable one-piece body construction, these safety cans stand up to tough acids and heat. Consistent color throughout the HDPE reduces visible scratches and provides color-resistance to reduce chemical leaching, making them suitable for most high purity liquids. The containers resist dents, punctures, and chips to withstand abusive environments. The self-closing cap, pressure-relief mechanism and flame arrester work together to prevent ignition sources from entering without restricting liquid flow in or out of the can. All cans feature stainless steel hardware and flame arrester. FM-approved.



Carbon Insert

A patented conductive current-carrying carbon insert is embedded into the rib of containers, completing a ground path between the cover assembly and the flame arrester. When used with a grounding strip, this provides proper grounding and prevents the creation of a static arc during filling or pouring.



Use smaller capacity safety cans with flame arresters to safely dispense and store chemicals found in laboratories.



14160

14065



14160 with 11201



12162

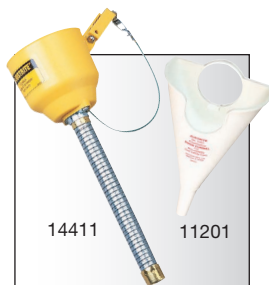


14561



Description and Capacity	Dimensions W x L x H	Dimensions OD x L	Approv/Lstg Regulation†	Red Model No	White Model No	Ship Wt lb/kg
0.5 gallon (2 L) oval polyethylene safety can	4.625 x 7.625 x 9.5 in 117 x 194 x 241 mm	—	FM	14065	12163	2/1
1 gallon (4 L) oval polyethylene safety can	4.625 x 7.625 x 12.75 in 117 x 194 x 324 mm			14160	12162	
2.5 gallon (9.5 L) round polyethylene safety can	10.75 x 14.25 in 273 x 362 mm		FM, UL	14261	—	4/2
5 gallon (19 L) round polyethylene safety can	12.75 x 16 in 324 x 406 mm			14561	—	9/4

†See inside front cover for Approval and Compliance Key.



14411

11201

Accessories

Description and Capacity	Dimensions W x L x H	Dimensions OD x L	Approv/Lstg Regulation	Model No	Ship Wt lb/kg
Polyethylene funnel for oval cans	—	0.562 x 6.5 in 14.3 x 165 mm	—	11201	1/1
Bolt-on funnel with galvanized hose for 2.5 gallon (9.5 L) and 5 gallon (19 L) cans		1 x 13.5 in 25 x 343 mm		14411	

Optional funnels aid in pouring.



Tilt cradle allows can to swing forward for dispensing while holding can securely on bench top.

Safety Dispensing Cans

With all the benefits of our classic Type I safety cans, these cans come with faucets to make them the choice of lab professionals for safe dispensing of hazardous liquids into small flasks and beakers. Fill spouts have self-closing pressure-relief caps and stainless steel flame arresters. Self-closing faucets provide trouble-free dispensing. Cans fitted with the 08540 faucet offer more controlled dispensing, while faucet 08902 provides a greater flow. All faucets are brass except faucet model number 08919 is stainless steel.

Polyethylene Safety Dispensing Can has superb corrosion protection, and a unique current-carrying carbon insert embedded into the container allows for proper grounding.

Steel & Poly Shelf Cans have a faucet mounted 2-in (51-mm) above the bottom to eliminate the need to lift the cans during dispensing.

Steel Tilt Cans have a faucet on top and the can rests in a sturdy metal cradle. Cradle base measures 13-13/16 x 14-in (351-mm x 356-mm).

All styles are FM-approved.



Need to dispense from a can stored in a safety cabinet?
Visit our website and search for model no. 29943—a shorter shelf for easy dispensing.



7150156

7150140



7150250



14545



Description and Capacity	Can Dimensions OD x H	Approv/Lstg Regulation†	Red Can Model No	Yellow Can Model No	Ship Wt lb/kg
2.5 gallon (9.5 L) steel safety shelf can with bottom faucet 08540	11.75 x 11.5 in 298 x 292 mm	FM	7225140	7225240	7/3
2.5 gallon (9.5 L) steel safety shelf can with bottom faucet 08902			7225150	7225250	
5 gallon (19 L) steel safety shelf can with bottom faucet 08540	11.75 x 16.875 in 298 x 429 mm		7150140	7150240	8/4
5 gallon (19 L) steel safety shelf can with bottom faucet 08902			7150150	7150250	
5 gallon (19 L) tilt steel safety can with top faucet 08540 and stand		7150146		14/6	
5 gallon (19 L) tilt steel safety can with top faucet 08902 and stand	7150156	FM, UL			
5 gallon (19 L) steel safety can with top faucet 08540	11.75 x 15.875 in 298 x 403 mm	FM	7150147		8/4
5 gallon (19 L) steel safety can with top faucet 08902			7150157		
1 gallon (4 L) oval polyethylene safety shelf can with self-close stainless steel faucet 08919	7.25 x 11.5 in 184 x 292 mm	FM	14169	—	3/1
5 gallon (19 L) polyethylene safety shelf can with self-close bottom faucet 08540	11.5 x 17 in 292 x 432 mm		14545		10/4
5 gallon (19 L) polyethylene tilt safety can with self-close faucet 08540 and stand	11.5 x 17 in 292 x 432 mm		14535		16/7
5 gallon (19 L) polyethylene safety can with self-close top faucet 08540			14540		10/4

†See inside front cover for Approval and Compliance Key.

Oily Waste Cans

Dispose of oil-soaked rags and prevent fires caused by stray sparks or spontaneous combustion

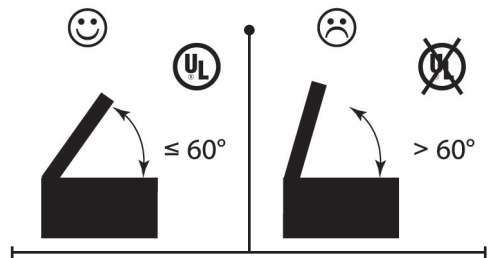
Rags and cloths soaked with solvents, thinners, linseed oil, combustible adhesives and other flammable liquids present a serious fire risk when improperly discarded. Lid opens to no more than 60 degrees and stays closed when not in use, isolating contents from fire sources and limiting oxygen to virtually eliminate the risk of spontaneous combustion. Round construction and elevated base allow circulation of air around can to disperse heat and reduce moisture build-up and rusting. Durable steel construction with a powder-coat finish provides chemical resistance. Approved by FM, UL, and TÜV. All cans carry a ten-year warranty.



1. Swinging carry handle for portability
2. Warning label with pictographs reduces miscommunication
3. Leakproof design with elevated base provides air circulation to reduce rusting and disperses heat for added safety



Foot pedal provides hands-free opening. When released, cover self-closes to reduce oxygen source and prevent a fire from starting.



Lid opens no more than a 60° angle as required by UL.



Description and Nominal Gallon Capacity	Dimensions OD x H	Approv/Lstg Regulation†	Red Model No		Ship Wt lb/kg
			Foot-Operated	Hand-Operated*	
2 gallon (8 L) oily waste can	9.625 x 9.125 in 244 x 232 mm	FM	—	09200	6/3
6 gallon (20 L) oily waste can	11.875 x 15.875 in 302 x 403 mm	FM,UL,TÜV	09100	09110	10/4
10 gallon (34 L) oily waste can	13.938 x 18.25 in 354 x 464 mm		09300	09310	13/6
14 gallon (52 L) oily waste can	16.063 x 20.25 in 408 x 514 mm		09500	09510	16/7
21 gallon (80 L) oily waste can	18.375 x 23.438 in 467 x 595 mm		09700	09710	22/10

*Hand-operated models do not have TÜV certification. †See inside front cover for Approval and Compliance Key.



Foot pedal offers hands-free opening to reduce the risk of contamination.

Biohazard Waste Cans

Safe, temporary collection of biological waste

- Meets OSHA 29 CFR1910.1030 for the segregation of infectious waste.
- Perfect for medical facilities and research laboratories.

Safely store contaminated laundry and other regulated waste (except sharps) in sturdy, leakproof steel cans with automatic, self-closing lid. Easy foot pedal operation opens the container to dispose of biohazard waste, and closes upon pedal release to reduce the risk of contamination. Can comes with one biohazard bag that fits around the circumference of the can top—optional model number 05901 includes a roll of 100 liner bags. Optional label kit number 25880 includes three additional biohazard labels for visibility from all sides to comply to California Health and Safety Code 118280.

To lessen disruptive closure noise in quiet environments, use SoundGard™ models which incorporate a muffling pad inside the lid—reducing noise by approximately 200% over standard models.



05914

05910R

05930R



1 Year
Limited Warranty

Description and Capacity	Dimensions OD x H	Approv/Lstg Regulation†	White Model No	Red Model No	SoundGard™ White Model No	SoundGard™ Silver Model No	Ship Wt lb/kg
6 gallon (20 L) biohazard can	11.875 x 15.875 in 302 x 403 mm	FM, TÜV	05910	05910R	05915	05914	10/5
10 gallon (34 L) biohazard can	13.937 x 18.25 in 354 x 464 mm		05930	05930R	05935	05934	13/6
100 red liner bags, 11 microns thick	33 x 24 in 838 x 610 mm	—	05901				2/1
Code compliant label kit for California (three labels and instructions)			25880				1/1

†See inside front cover for Approval and Compliance Key.

EcoPolyBlend™ Spill Control Funnels

An eco-friendly, cost-effective way to collect liquids and keep drum tops clean

Use these funnels with any closed-head 30- and 55-gallon (110- and 200-liter) drums. Low-profile, wide diameter opening makes it for quick, easy pouring. Scalloped, sloped design minimizes splashes and prevents containers from resting in their own liquids. Large, flat well at the throat of funnel allows for passive draining of paint tins, filters, buckets and other containers.

Funnel for flammable liquids includes a drum fill vent with brass flame arrester, threaded bung cap with tight seal, and pressure relief valve for high temperatures. Molded-in hook stores optional funnel cover.

1 Year
Limited Warranty

Description	Sump Capacity Gallons/Liters	OD x H	Compliance†	Model No	Ship Wt lb/kg
Funnel for non-flammables	2.50/9	21 x 3.25 in 533 x 83 mm	0	28680	5/2
Funnel for flammables				28681	7/3
Cover for funnel 28680		19 x 3.25 in 482 x 32 mm	—	28682	5/2

†See inside front cover for Approval and Compliance Key.



Wide diameter opening allows for quick and easy pouring.



100% recycled content.
Independently green validated
by UL Environment.

Eye/Face Wash Equipment Overview

When an eye injury occurs, immediate treatment by flushing the contaminated area provides significant benefits to the injured person. Every second counts—should treatment be delayed, effects can range from temporary to permanent blindness. ANSI Z358.1 dictates that an eyewash station should be accessible no more than a 10-second, unobstructed walk from a hazard and that it should provide tepid flushing fluid for a minimum of 15 minutes.

Factories, laboratories or schools, whatever the location, all plumbed in eye/face washes are designed to be quick and simple to operate. This extensive range is intended for indoor use but may, where practical, be located outdoors in warmer climates.

There are various options to suit all environments; open or closed bowl, plastic or stainless steel and powder coated, perfect for the laboratory. Whether you need wall, pedestal, table or bench mounted eye/face washes there is a model to fit your requirements.



Eye/face wash stations deliver 3-gallons (11.4-liters) of tepid water per minute for up to 15 minutes to ensure a thorough decontamination.

Wall-Mounted Eye/Face Wash with Integral Lid

NEW

- *Reliable, effective emergency treatment for eyeface injuries*
- *Meets ANSI Z358.1 and EN 15154 standards, supports OSHA requirements*

Eye/face wash with high, ANSI-compliant flow rate includes aerated diffusers which provide a soft, scrubbing action to the eyes and face. Made of durable, corrosion-resistant acrylic capped ABS, the eye/face wash fountain incorporates an integral lid connected to the water valve for automatic operation—activate by simply pulling down the lid. Covered bowl also ensures that the eyewash nozzles and bowl remain clean and free from contamination at all times—no dust covers needed. Eye wash diffusers fitted with fine mesh strainers and an individual flow controller deliver a gentle flow of aerated water to comfortably rinse eyes. Easy-to-reach flow regulator valve positioned on side of bowl adjusts to suit the severity of the accident. High visibility pictogram on unit and separate 10 x 12-in (254 x 305-mm) universal eye wash sign for mounting at higher location. Includes an inspection record tag for recording test and service history.

1. Integral lid

Connects to the water valve for automatic water activation when lid is pulled down.

2. Aerated Eye Wash Diffusers

For high flow rate irrigation with a soft scrubbing action. Diffusers fitted with fine mesh strainers deliver a gentle water flow for comfortable eye rinsing.

3. Flow Regulator Valve

Ensures an optimum water flow—adjusts to suit the severity of the accident.

4. Covered Eye/Face Wash

Protects the bowl and diffusers against dust and debris—stays contaminate free.

5. Acrylic Capped ABS

Tough, durable construction with corrosion and UV resistance.

6. Large Pictogram Sign

For greater visibility.



30006

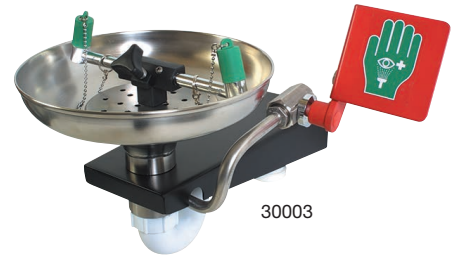
1 Year
Limited Warranty

Emergency Eye/Face Wash Equipment - Plumbed In - Wall Mounted

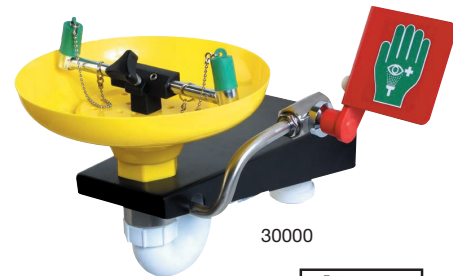
Description	Nominal Dimensions H x W x D	Inlet Size NPT	Minimum Pressure PSI / bar g	Water Flow per Minute US Gallons / Liters	Approv/Lstg Regulation	Model No	Nominal Product Wt lbs/kg
Eye/face wash, closed ABS bowl	8.9 x 13.5 x 14.3 in 227 x 343 x 362 mm	1/2 in (F)	29/2	3/11.4	AN, ENS	30006	7/3

Wall-Mounted Emergency Eye/Face Wash, Open Bowl NEW

- Twin spray nozzles protected by dust covers that pop-off when eye wash is activated via the push plate
- Diffusers fitted with fine mesh strainers and an individual flow controller provide a gentle flow of aerated water and prevent further injury to the eyes
- High-performance quarter-turn ball valve made of 316L stainless steel endures the harshest environments and site conditions
- Available with economical, yellow plastic ABS open bowl or corrosion-resistant stainless steel bowl
- Includes a separate 10 x 12-in (254 x 305-mm) universal eye wash sign for enhanced visibility as well as an inspection record tag for recording test and service history
- Meets ANSI Z358.1 and EN 15154 standards, supports OSHA requirements



30003



30000

1 Year
Limited Warranty

Emergency Eye/Face Wash Equipment - Plumbed In - Wall Mounted

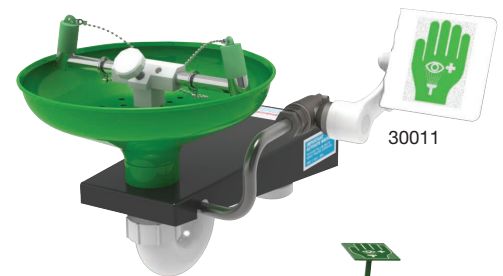
Description	Nominal Dimensions H x W x D	Inlet Size NPT	Minimum Pressure PSI / bar g	Water Flow per Minute US Gallons / Liters	Approv/Lstg Regulation	Model No	Nominal Product Wt lbs/kg
Eye/face wash, open ABS bowl	11.6 x 16.9 x 15.7 in 295 x 429 x 400 mm	1/2 in (F)	29/2	3/11.4	AN, ENS	30000	9/4
Eye/face wash, open stainless steel bowl	11.6 x 16.9 x 15.7 in 295 x 429 x 400 mm	1/2 in (F)	29/2	3/11.4	AN, ENS	30003	9/4

Laboratory Range Emergency Eye/Face Wash NEW

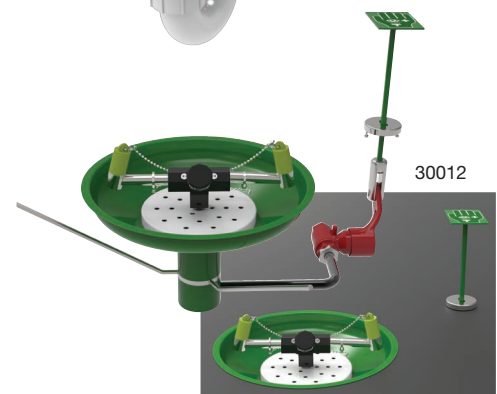
- Pop-off dust covers protect the twin spray nozzles from contaminants, these are lifted off by the water jets upon operation via the push plate
- Fine mesh strainers and an individual flow controller provide a gentle flow of aerated water and prevent further injury to the eyes
- High-performance quarter-turn ball valve made of 316L stainless steel endures the harshest environments and site conditions
- Ideal for laboratories, schools and general light duty indoor use
- Includes a separate 10 x 12-in (254 x 305-mm) universal eye wash sign for enhanced visibility as well as an inspection record tag for recording test and service history

These wall, table, bench and pedestal mounted eye/face wash units meet ANSI Z358.1 and EN 15154 standards, and supports OSHA requirements. They feature an easy-to-clean stainless steel green powder coated finish, ideal for the laboratory, and provide 3-gallons (11.4-liter) per minute of flushing fluid.

Model No 30012 mounts flush with table.



30011



30012

1 Year
Limited Warranty

Emergency Eye/Face Wash Equipment - Plumbed In - Laboratory Range

Description	Nominal Dimensions H x W x D	Inlet Size NPT	Minimum Pressure PSI / bar g	Water Flow per Minute US Gallons / Liters	Approv/Lstg Regulation	Model No Stainless Steel	Nominal Product Wt lbs/kg
Laboratory eye/face wash, wall mount	11.6 x 16.9 x 15.7 in 295 x 429 x 400 mm	1/2 in (F)	29/2	3/11.4	AN, ENS	30011	8/4
Laboratory eye/face wash, table mount	8.3 x 16.9 x 11.8 in 210 x 429 x 300 mm	1/2 in (F)	29/2	3/11.4	AN, ENS	30012	7/3
Laboratory eye/face wash, pedestal mount	43.9 x 12.4 x 21.5 in 1116 x 314 x 547 mm	1 in (M)	29/2	3/11.4	AN, ENS	30013	18/8

Pedestal Mounted Range of Eye/Face Wash Stations NEW

- Available in an acrylic capped ABS covered bowl, or choose from either an ABS or stainless steel open bowl with twin spray nozzles protected by dust covers that pop-off when eye wash is activated
- Diffusers fitted with fine mesh strainers and a flow controller provide a gentle flow of aerated water and prevent further injury to the eyes
- Includes a separate 10 x 12-in (254 x 305-mm) universal eyewash sign for enhanced visibility, as well as an inspection record tag for recording service and test history

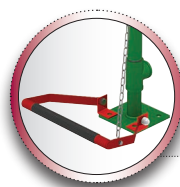
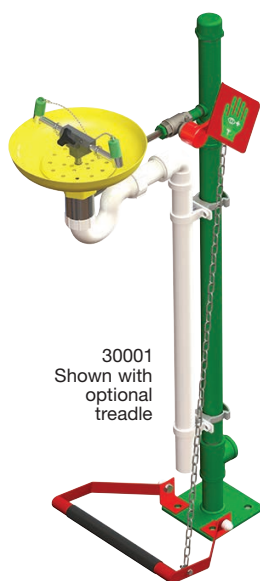
Pedestal-mounted eye/face wash units, designed at ANSI-compliant height, are generally located in open areas away from walls. Choose either galvanized or stainless steel pipework. Meets ANSI and EN 15154 standards and supports OSHA requirements. Easy activation—push red hand sign on open bowl models; pull down lid on covered bowl models. Add optional foot treadle for a secondary means of activation.

1 Year
Limited Warranty

†Emergency Eye/Face Wash Equipment - Plumbed In - Pedestal Mounted

Description	Nominal Dimensions H x W x D	Inlet Size NPT	Minimum Pressure PSI / bar g	Water Flow per Minute US Gallons / Liters	Approv/Lstg Regulation	Model No Galvanized Steel	Model No Stainless Steel	Nominal Product Wt lbs/kg
Eye/face wash, open ABS bowl	45.5 x 12.4 x 21.2 in 1156 x 314 x 538 mm	1-1/4 in (F)	29/2	3/11.4	AN, ENS	30001	30002	22/10
Eye/face wash, open stainless steel bowl	45.5 x 12.4 x 21.2 in 1156 x 314 x 538 mm	1-1/4 in (F)	29/2	3/11.4	AN, ENS	30004	30005	22/10
Eye/face wash, closed ABS bowl	47 x 19.8 x 18.3 in 1194 x 502 x 464 mm	1-1/4 in (F)	29/2	3/11.4	AN, ENS	30007	30008	22/10

†Some assembly may be required.



Visit our website for optional
treadle, no. 30513

Handheld Drench Hose and Eye/Face Wash

- Fitted with pop-off dust covers, a non-return valve and flow regulator
- Complete with 4.9-foot (1.5-m) of reinforced hose, particularly useful for treating disabled personnel
- Lock-on actuating button for ease of use

Wall mounted handheld drench hose model number 30014 suits hazardous environments where there is a risk of small spillages of chemicals or dangerous substances. Model number 30016 also meets ANSI and EN 15154 water flow standards for an eye/face wash. Includes an inspection record tag for recording test and service history.



Portable, Self-Contained Emergency Wash

- 2.9 US gallon (11-liter) wash provides a gentle flow of water for two minutes
- Incorporates a stainless steel cylinder with pressure gauge pressurized to 100 PSI (6.9 bar) via a Schrader tire valve
- Handheld wash diffuser on flexible hose for ease of use
- Includes an inspection record tag for recording test and service history



Portable, Self-Contained Emergency Wash

- 4 US gallon (15-liter) stainless steel cylinder with handheld drench hose effectively washes eyes, face and body
- Delivers up to three minutes of water when pressurized to 100 PSI (6.9 bar) via a Schrader tire valve
- Pressure gauge and dual action safety valve prevent over pressurization and allow the user to vent the cylinder for cleaning and maintenance
- Includes an inspection record tag for recording test and service history



Handheld Drench Hose and Eye/Face Wash

Description	Nominal Dimensions H x W x D	Inlet Size* NPT	Minimum Pressure PSI / bar g	Water Flow per Minute US Gallons / Liters	Model No	Nominal Product Wt lbs/kg
Wall mount, 1 nozzle, in-line	10.8 x 2.7 x 2.7 in 274 x 69 x 69 mm	1/2 in (F)	22/1.5	2.1/8	30014	2/1
Wall mount, 2 nozzles, angled	13.4 x 5.9 x 5.4 in 341 x 149 x 137 mm	1/2 in (F)	22/1.5	3/11.4	30016	2/1

* Connector hose



Portable, Self-Contained Wash Equipment†

Description	Capacity US Gallons/ Liters	Operating Duration (min)	Dimensions H x W x D	Water Flow per Minute US Gallons / Liters	Model No	Nominal Product Weight Full/Empty
Portable, self-contained wash	2.9/11	2	27.2 x 7.1 x 7.1 in 692 x 180 x 180 mm	1.59/6	30051	33/9 lbs 15/4 kgs
Portable, self-contained wash	4/15	3	32.3 x 8.1 x 11.5 in 820 x 205 x 293 mm	1.59/6	30052	44/11 lbs 20/5 kgs



†These portable washes offer an effective solution in locations that are unsuitable for fixed installations and should be used as a secondary measure to supplement plumbed in eye/face wash units.

Indoor Emergency Shower Overview

Suitable for use in all applications not subject to the possibility of freezing or overheating, these unheated safety showers range from simple wall or ceiling mounted units, to free-standing units, to combination showers used to treat eye/face accidents or full body exposure incidents.

Combination Safety Shower and Eye/Face Wash

- All-in-one emergency station for treatment of eye/face injuries or full-body chemical exposure
- Meets ANSI Z358.1 2014 and EN 15154 standards, supports OSHA requirements
- Use in factories, schools, laboratories or other indoor environments

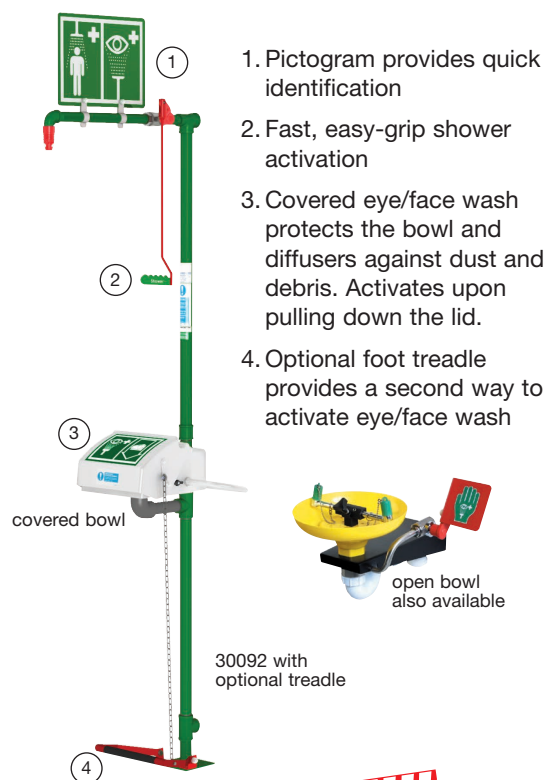
Be prepared to respond to accidents with this multifunctional safety unit that provides initial on-site treatment to eye/face or full body exposure to hazards. Available in galvanized or stainless steel, piping system features specially designed, high-performance quarter-turn ball valve made of 316L stainless steel endures the harshest environments and site conditions. Low operating torque to open valve offers reliable, easy on/off operation when emergencies occur. Valve includes an integral, heavy-duty stainless steel stop-plate to handle rough operation without failure. Simply pull shower handle to activate immediate water drenching.

Shower features a removable, self-draining overhead nozzle designed for high flow rates that meet or exceed ANSI standards. Made of durable nylon 6 material, the nozzle offers optimal spray distribution for user protection. Unlike shower rose designs, this compact nozzle reduces the potential for insect nesting and eliminates high replacement costs associated with cracked or dented plastic spray heads.

Eye/face wash with high, ANSI-compliant flow rate includes aerated diffusers which provide a soft, scrubbing action to the eyes and face. Made of durable, corrosion-resistant acrylic capped ABS, the eye/face wash fountain incorporates an integral lid connected to the water valve for automatic operation—activate by simply pulling down the lid. Also available in open bowl design in ABS or stainless steel—activate by simply pushing red hand sign. Add optional foot treadle for a secondary means of eyewash activation. All models include a universal eye wash and safety shower sign for enhanced visibility, as well as an inspection tag for recording service and test history.



High performance shower valve made of 316L stainless steel with heavy-duty stop plate ensures reliable, easy operation during an emergency.



†Combination Showers - Top Water Inlet

Description	Nominal Dimensions H x W x D*	Inlet Size NPT	Minimum Pressure PSI / bar g	Water Flow per Minute US Gallons / Liters	Approv/Lstg Regulation	Model No Galvanized Steel	Model No Stainless Steel	Nominal Product Wt lbs/kg
Open ABS bowl, eye/face wash, floor mount	103 x 12.4 x 29.5 in 2617 x 314 x 751 mm	1-1/4 in (F)	29/2	20/76 (shower) 3/11.4 (eye/face)	AN, ENS	30086	30087	35/16
Open stainless steel bowl, eye/face wash, floor mount	103 x 12.4 x 29.5 in 2617 x 314 x 751 mm	1-1/4 in (F)	29/2	20/76 (shower) 3/11.4 (eye/face)	AN, ENS	30088	30089	35/16
Closed ABS bowl, eye/face wash, floor mount	103 x 19.8 x 30.2 in 2617 x 504 x 768 mm	1-1/4 in (F)	29/2	20/76 (shower) 3/11.4 (eye/face)	AN, ENS	30092	30093	37/17
Closed ABS bowl eye/face wash, wall mount	66.7 x 19.8 x 29 in 1695 x 504 x 737 mm	1-1/4 in (F)	29/2	20/76 (shower) 3/11.4 (eye/face)	AN, ENS	30098	30099	40/18

*Dimensions include shower-mounted universal sign. Approximate height of sign is 12-in (305-mm).

†Some assembly may be required.



1 Year
Limited Warranty

Drench Showers

From simple wall- or ceiling-mounted units if space is at a premium, to a free-standing model, these general purpose indoor unheated emergency safety showers are suitable for use in all applications that don't require an eye wash. All models include a universal safety shower sign for enhanced visibility, and an inspection tag for recording service and test history. Meets ANSI and EN 15154 standards and supports OSHA requirements.



†Drench Showers

Description	Nominal Dimensions H x W x D*	Inlet Size NPT	Minimum Pressure PSI / bar g	Water Flow per Minute US Gallons / Liters	Approv/Lstg Regulation	Model No Galvanized Steel	Model No Stainless Steel	Nominal Product Wt lbs/kg
Floor mount	101.5 x 8.5 x 29.5 in 2579 x 215 x 751 mm	1-1/4 in (F)	22/1.5	20/76	AN, ENS	30082	30083	26/12
Ceiling mount	31.6 x 8.4 x 5.9 in 804 x 214 x 150 mm	1 in (F)	22/1.5	20/76	AN, ENS	30076	30077	8/4
Wall mount	35.8 x 8.5 x 28.7 in 909 x 215 x 730 mm	1 in (F)	22/1.5	20/76	AN, ENS	30078	30079	11/5
Ring main mount	35.8 x 6.5 x 25.6 in 909 x 165 x 651 mm	1 in (M)	22/1.5	20/76	AN, ENS	30080†	30081†	7/3

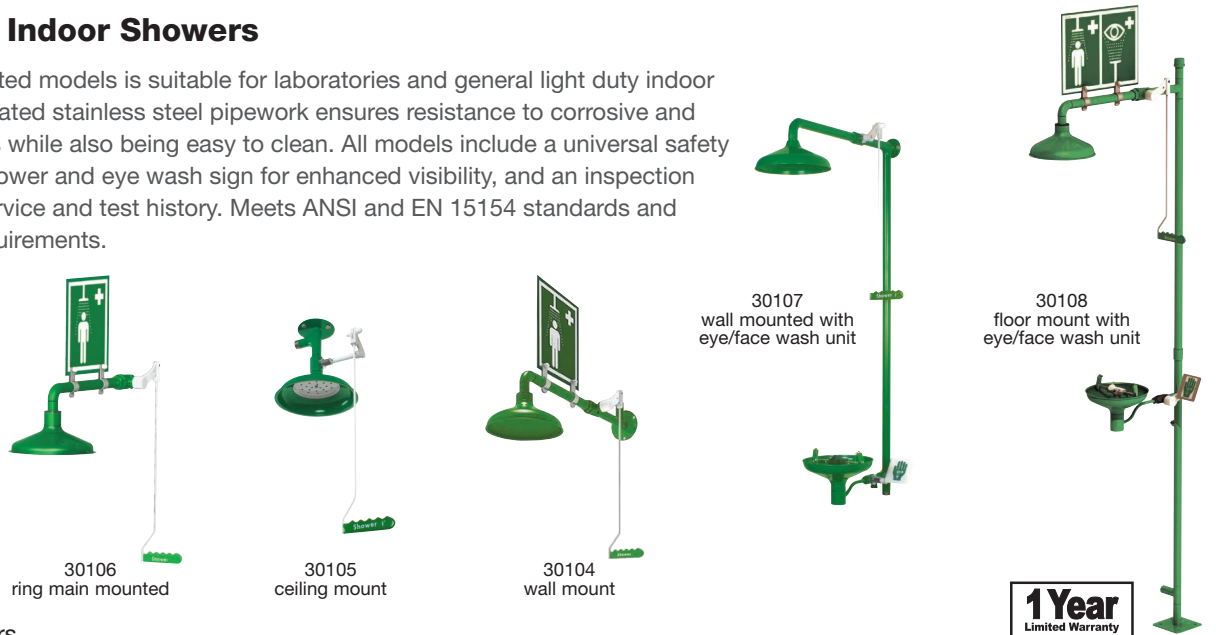
* Dimensions include 26-in (660-mm) pull handle, and the shower-mounted universal sign, where applicable. Approximate height of sign is 12-in (305-mm).

† Mounting plate not included.

‡ Some assembly may be required.

Lab Range of Indoor Showers

This range of unheated models is suitable for laboratories and general light duty indoor use. The powder coated stainless steel pipework ensures resistance to corrosive and flammable materials while also being easy to clean. All models include a universal safety shower or safety shower and eye wash sign for enhanced visibility, and an inspection tag for recording service and test history. Meets ANSI and EN 15154 standards and supports OSHA requirements.



†Indoor Lab Showers

Description	Nominal Dimensions H x W x D*	Inlet Size NPT	Minimum Pressure PSI / bar g	Water Flow per Minute US Gallons / Liters	Approv/Lstg Regulation	Model No	Nominal Product Wt lbs/kg
Shower, wall mount	35.9 x 12.6 x 31.4 in 913 x 319 x 799 mm	1 in (M)	22/1.5	20/76	AN, ENS	30104	11/5
Shower, ceiling mount	28.5 x 16.3 x 10.9 in 724 x 414 x 278 mm	1 in (M)	22/1.5	20/76	AN, ENS	30105	11/5
Shower, ring main mount	35.9 x 13.1 x 24.4 in 913 x 334 x 620 mm	1 in (F)	22/1.5	20/76	AN, ENS	30106†	11/5
Laboratory combination shower, open powder-coated stainless steel bowl, wall mount	66.2 x 12.6 x 31.4 in 1683 x 319 x 799 mm	1 in (M)	29/2	20/76 (shower) 3/11.4 (eye/face)	AN, ENS	30107	29/13
Laboratory combination shower, open powder-coated stainless steel bowl, floor mount	101 x 12.6 x 32.7 in 2566 x 319 x 830 mm	1 in (M)	29/2	20/76 (shower) 3/11.4 (eye/face)	AN, ENS	30108	33/15

* Dimensions include 26-in (660-mm) pull handle, and the shower-mounted universal sign, where applicable. Approximate height of sign is 12-in (305-mm).

† Mounting plate not included. ‡ Some assembly may be required.



Cubicle showers offer effective emergency treatment in laboratories or any area with limited space, or applications where a shower needs to be totally enclosed.

Emergency Cubicle Showers

Designed for locations where space is at a premium or the emergency safety shower needs to be enclosed, emergency cubicle showers include an integral drain sump and strip screens to reduce the risk of water outside the cubicle area. Cubicles feature an ANSI compliant, eye/face wash with integral, durable acrylic capped ABS lid to protect against dust and debris—activate by simply pulling down the cover. The cubicle shower has a stainless steel hollow section frame enclosed in GFRP wall sheeting with stainless steel pipes for corrosion resistance and extended life. The exterior sheeting includes universal pictogram signs and green and white safety stripes.

Model Nos. 30176 and 30177 - Multi-nozzle decontamination shower is activated by foot panel upon entry into the cubicle. Mounted on the exterior side of the cubicle for maximum shower effectiveness, the eye/face wash is hand activated. Upgrade to model no. 30177 to add a 120V sump pump, suitable for non-hazardous locations.

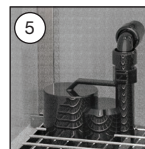
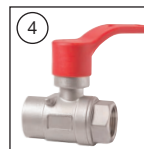
Model Nos. 30180 and 30181 - All-in-one ANSI-compliant combination safety shower and eye/face station, includes shower with ABS rose and in-line, covered eye/face wash. Upgrade to model no. 30181 to add a 120V sump pump, suitable for non-hazardous locations.



30181

1. Pictogram provides quick identification
2. Pull down handle for fast shower activation
3. Covered eye/face wash protects bowl and diffusers against dust and debris. Activates automatically upon pulling down the lid.
4. Shower incorporates 316L stainless steel ball valve with integral stop-plate for reliable operation without failure. Low operating torque offers ease of operation in emergency situations.
5. 120V sump pump prevents sump overflow
Note: Actual pump configuration may differ from image.

Comes with full-length clear plastic strip screens (not shown) to minimize water spray outside the cubicle



30180
shown without
strip screens



30177
shown without
strip screens

Cubicle Showers

1 Year
Limited Warranty

Description	Nominal Dimensions H x W x D*	Inlet Size NPT	Minimum Pressure PSI / bar g	Water Flow per Minute US Gallons / Liters	Approv/Lstg Regulation	Model No	Nominal Product Wt lbs/kg
Multi-nozzle body wash with strip screens, foot activated, externally mounted eye/face wash, hand activated	94.8 x 51.7 x 41.3 in 2408 x 1313 x 1049 mm	1 in (M)	50/3.5	30/115 (body) 3/11.4 (eye/face)	—	30176†	266/121
Multi-nozzle body wash with strip screens, foot activated, externally mounted eye/face wash, hand activated—sump pump, non-hazardous 120V, 60Hz	94.8 x 51.7 x 41.8 in 2408 x 1313 x 1061 mm	1 in (M)	50/3.5	30/115 (body) 3/11.4 (eye/face)	—	30177†	281/128
Shower and internally mounted eye/face wash with strip screens, hand activated	94.8 x 40.2 x 41.3 in 2408 x 1021 x 1049 mm	1 in (M)	29/2	20/76 (shower) 3/11.4 (eye/face)	AN, ENS	30180	255/116
Shower and internally mounted eye/face wash with strip screens, hand activated—sump pump, non-hazardous 120V, 60Hz	94.8 x 39.2 x 41.8 in 2408 x 995 x 1061 mm	1 in (M)	29/2	20/76 (shower) 3/11.4 (eye/face)	AN, ENS	30181	270/123

*Dimensions include mounting plates and water inlets.

† Eye/face washes are mounted on the exterior for maximum shower effectiveness.



Proper bonding and grounding techniques prevent static discharge and the potential for fire.

Safety Drum Funnels

Prevent spills when transferring flammable solvents, thinners, oils or paint wastes

- Wide-mouth opening with hinged, stay-open lid.
- Self-closing lid in case of fire.
- Galvanized steel with durable exterior epoxy powder-coat finish.

Safely transfer flammable liquids into a 30- or 55-gallon (110- or 200-L) drum using these 2.6-gallon (9.8-L) capacity safety funnels that fit into a 2-in (51-mm) bung. Wide 10-3/4-in (273-mm) mouth handles rapid pouring without spills. Durable steel funnels feature a self-closing cover with a fusible link that melts at 165°F (74°C) to automatically close in case of a fire. Model numbers 08207 and 08205 include a built-in brass flame arrester that absorbs and dissipates heat preventing any external ignition source from reaching the drum's content. Both models handle flammable waste safely—model number 08205 with a longer flame arrester provides greater liquid flow. For collection of viscous flammables or non-flammable liquids, use model number 08208 fitted with a long open-ended brass tube to direct liquid flow. Heavy-duty 18-gauge (1-mm thick) galvanized steel construction with electrostatically applied epoxy powder-coat offers excellent durability and chemical resistance. Lid in closed position reduces vapors and accepts a lock (not included) to prevent unauthorized access.

Safety Drum Funnel with Tip-Over Protection System

Use model number 08203 to prevent spillage from drum tip-over accidents or for earthquake-prone areas. It offers the same protection as drum funnel no. 08207 above, with the addition of an integral ball valve that self-closes to minimize vapor emissions—and seals the drum closed to prevent dangerous content spillage. System includes a brass vent to provide pressure and vacuum relief for protection against rupture or explosion. Easy to operate—install vent with bung adaptor in the 3/4-in (19-mm) bung and brass unit with handle into the 2-in (51-mm) bung. Fill funnel with liquid, close cover and latch, then depress handle to manually open ball valve and release liquid into drum. Releasing the handle automatically closes the valve to safely seal the drum.

FM-approved. EPA and OSHA compliant.



Use color coding to safely segregate incompatible waste.



Pushing down handle opens ball valve to release liquid into drum.



Need a funnel to fit small steel pails?

For safe liquid collection into 5-gallon (19-liter) pails, visit our website and search model nos. 08201 and 08202.



Description	Funnel Size Dia x H	Mouth Dia	NPT/NPS	Approv/Lstg Regulation†	Red Funnel Model No	Yellow Funnel Model No	Ship Wt lb/kg
Safety drum funnel with self-closing cover and 6 in (152 mm) flame arrester	10.75 x 10 in 273 x 254 mm	10.75 in 273 mm	2 in (DN50)	FM, TÜV	08207	08227	10/5
Safety drum funnel with self-closing cover and 32 in (813 mm) flame arrester					08205	08206	16/7
Safety drum funnel with self-closing cover and 33 in (838 mm) brass tube					08208	—	—
Safety drum funnel no. 08207 with tip-over protection system	—	—	2 in (DN50) and 0.75 in (DN20) vent	FM	08203	—	20/9
Tip-over protection kit only for use with nos. 08207 or 08205				FM	08214	—	10/5

†See inside front cover for Approval and Compliance Key.

EcoPolyBlend™ Accumulation Centers and Ramp

Combine units to create your own customized spill-control system

Low-profile centers only measure 5.5-inches (140-mm) high for easy handling of drums. Made with 100% recycled polyethylene, these accumulation centers are nearly impervious to chemicals, including acids and corrosives. Seamless construction eliminates leaks, making them ideal for drum filling and dispensing operations. Self-locating grates won't ride-up, and are removable for easy cleaning. Combine 2-, 4-, 6-, and 8-drum modular units to create your own customized system. Use the optional joining clips to firmly lock units together. Sumps remain separate and clips can be removed for easy repositioning. Also available in non-recycled yellow color.

EPA compliant, supports SPCC, and meets NFPA 1 2009 edition and IFC fire codes.

Use optional Sump-to-Sump™ drain kit (includes joining clips and transfer tube) for applications requiring a continuous sump. Kit allows you to join centers together, on-site, for full compliance with regulations when sump capacities reach 71-gallons (270-liters). Kit includes one pair stainless steel joining clips, one pair rubber grommets, one polytetrafluoroethylene (PTFE) transfer tube. (Patent No US 6,622,879,B1)

Companion Ramp

Load and unload heavy drum with ease. Anti-skid ribs provide maximum safety. Place the ramp anywhere on accumulation centers size 2-drum or larger.

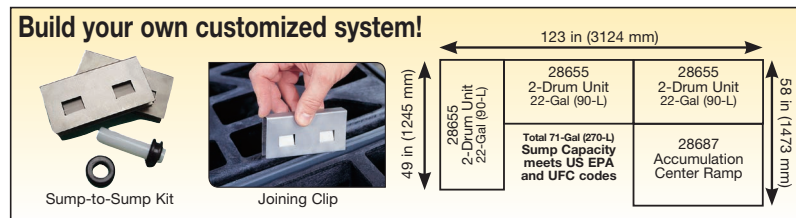


Modular design lets you join centers together to fit your space and application.



Black models -100% recycled content.
Independently green validated by UL Environment.

Yellow models have 30% recycled content



Description	Sump Capacity Gallons/Liters	Load-bearing* Capacity lb/kg	External Dim. W x D x H	Compliance†	Model No Black	Model No Yellow	Ship Wt lb/kg
1 drum center	12/45	1250/567	25 x 25 x 5.5 in 635 x 635 x 140 mm	—	28653	28652	17/8
2 drum center	24/90	2500/1134	49 x 25 x 5.5 in 1245 x 635 x 140 mm		28655	28654	32/15
4 drum center	49/185	5000/2268	49 x 49 x 5.5 in 1245 x 1245 x 140 mm		28657	28656	61/28
6 drum center	73/276	7500/3402	73 x 49 x 5.5 in 1854 x 1245 x 140 mm	E,S,O	28659	28658	91/41
8 drum center	98/371	10,000/4536	97 x 49 x 5.5 in 2464 x 1245 x 140 mm		28661	28660	122/55
Ramp for above	—	1000/455	48 x 33 x 6.25 in 1219 x 838 x 159 mm	—	28687	28650	41/19
Joining clips, one pair, stainless steel	—	—	4 x 2 in 102 x 51 mm	—	28926	—	1/0.5
Sump-to-Sump™ drain kit	—	—	—	—	28927	—	—

EcoPolyBlend™ Replacement Grates (100% recycled)

2 drum grate for all sizes except 1 drum	—	—	24 x 48 x 2.5 in 610 x 1219 x 63 mm	—	28259	—	16/7
1 drum grate for 1 drum unit and 3 drum in-line	—	—	24 x 24 x 2.5 in 610 x 610 x 63 mm	—	28260	—	8/4

*Service temperature range: -30°F to 120°F (-34°C to 49°C) †See inside front cover for Approval and Compliance Key.

EcoPolyBlend™ Spill Control Pallets

Keep workers safe from accidental slips indoors and avoid costly hazmat cleanup costs

- Protect against ground contamination.
- Comply with EPA and avoid potential fines.

Made of molded 100% recycled polyethylene, these pallets resist chemical attack from hazardous acids, caustics and solvents. The oversized sump holds the contents of up to a 55-gallon (200-liter) drum in the event of leak or rupture—meeting or exceeding the most stringent spill containment regulations. Seamless construction eliminates leaks. Self-locating grates lift off for quick cleanup. Black color hides grime and dirt to keep your workplace looking clean. Choose from square or in-line configurations. Also available in non-recycled yellow color.

EPA compliant, supports SPCC, and meets NFPA 1 2009 edition and IFC fire codes.



Use pallet as a workstation for waste collection.



28623



28627



28634



28631



28635 with 28688 ramp

Global Protection
Justrite products are available worldwide. For pricing and availability, simply contact the authorized distributor nearest you.



Black models -100% recycled content. Independently green validated by UL Environment.

Yellow models have 30% recycled content



Description	Sump Capacity Gallons/Liters	Load-bearing* Capacity lb/kg	External Dim. W x D x H	Compliance†	Model No Black	Model No Yellow	Ship Wt lb/kg	
2 drum in-line pallet	66/250	2500/1134	49 x 25 x 18 in	E,S,O	28623	28622	44/20	
2 drum in-line pallet w/drain			1245 x 635 x 457 mm		28625	28624		
3 drum in-line pallet	75/284	3750/1701	73 x 25 x 11.625 in		28627	28626	58/26	
3 drum in-line pallet w/drain			1854 x 635 x 295 mm		28629	28628		
4 drum in-line pallet	75/284	5000/2268	97 x 25 x 9 in		28631	28630	77/35	
4 drum in-line pallet w/drain			2464 x 635 x 229 mm		28633	28632		
4 drum square pallet	73/276	5000/2268	49 x 49 x 10.25 in		28635	28634	70/32	
4 drum square pallet w/drain			1245 x 1245 x 260 mm		28637	28636		
Ramp for 28635	—	1000/454	49 x 33 x 10.50 in		—	28688	28620	40/18

†See inside front cover for Approval and Compliance Key.

EcoPolyBlend™ Replacement Grates (100% recycled)

2 drum grate for all sizes above	24 x 48 x 2.5 in 610 x 1219 x 63 mm	—	28259	—	16/7
1 drum grate for 3 drum in-line	24 x 24 x 2.5 in 610 x 610 x 63 mm		28260		8/4

*Service temperature range: -30°F to 120°F (-34°C to 49°C)



Outdoor Safety Lockers—Non-Combustible NEW

Safe, secure storage for flammables and hazardous chemicals

- Leakproof, all welded sump with galvanized steel grate flooring.
- 42-in (1.07-m) wide steel door system with 3-point lock.
- Chemical and UV resistant coating, inside and out.

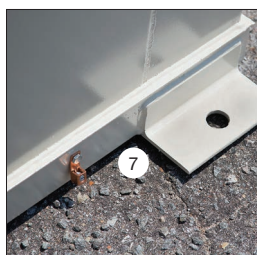
Protect people and the environment and meet insurance requirements by storing hazardous materials in rugged, FM-approved Outdoor Safety Lockers. Non-combustible construction with heavy gauge steel and built-in secondary containment, every locker is fully compliant to meet EPA 40 CFR, NFPA 30 and NFPA 1 regulations. Proper chemical storage reduces poison hazards and accidents, minimizes contamination of chemicals, and prevents unwanted, costly fines.

Each locker features natural draft ventilation, NFPA 704 diamond decal for content identification, anchoring plates for hold down protection, and multiple static grounding connections for maximum safety. Forklift channels permit easy relocation.

Choose explosion relief panels for the storage of highly volatile Class 1A or dispensing of Class 1 A and 1B flammables as defined by NFPA – always check with the local authority having jurisdiction to ensure safety by following all local regulations, including proper setback requirements.



Sixteen-drum locker with optional steel ramp simplifies drum loading.



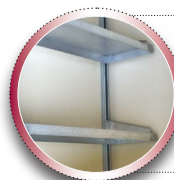
1. Air vents on both sides
2. Inside grounding lug
3. Leakproof sump with removable, galvanized steel grate floor
4. High visibility safety strip
5. Forklift channels
6. 3-point latching system
7. Outside grounding lug and anchor plate
8. Explosion relief design with blow-out panels



911020
2-drum

911090
9-drum

911120
12-drum



See our full selection of accessories for added convenience and safety . . . include a ramp, shelving, grounding kit, fire protection and more—go to justrite.com under Outdoor Safety Lockers in Products area.

NON-COMBUSTIBLE OUTDOOR SAFETY LOCKERS



55-Gal Drum Capacity	Sump Capacity Gallons/Liters	Dimensions W x D x H		Approval/Lstg Regulation†	Standard		Explosion Relief	
		Exterior*	Interior		Model No	Ship Wt lb/kg	Model No	Ship Wt lb/kg
2	120/454	67 in x 38 in x 75 in 1702 mm x 965 mm x 1905 mm	54 in x 30 in x 55.5 in 1372 mm x 762 mm x 1410 mm	FM,N,A,E	911020	982/445	911021	1069/485
4	100/379	67 in x 62 in x 75 in 1702 mm x 1575 mm x 1905 mm	54 in x 54 in x 62 in 1372 mm x 1372 mm x 1575 mm		911040	1341/608	911041	1428/648
6	140/530	91 in x 62 in x 97 in 2311 mm x 1575 mm x 2464 mm	78 in x 54 in x 84 in 1981 mm x 1372 mm x 2134 mm		911060	1658/752	911061	1745/792
9	198/750	91 in x 86 in x 97 in 2311 mm x 2184 mm x 2464 mm	78 in x 78 in x 84 in 1981 mm x 1981 mm x 2134 mm		911090	2101/953	911091	2203/999
12	253/958	84 in x 115 in x 97 in 2134 mm x 2921 mm x 2464 mm	78 in x 102 in x 84 in 1981 mm x 2591 mm x 2134 mm		911120	2442/1108	911121	2616/1187
16	326/1234	115 in x 110 in x 97 in 2921 mm x 2794 mm x 2464 mm	102 in x 102 in x 84 in 2591 mm x 2591 mm x 2134 mm		911160	2959/1342	911161	3126/1418

Note: Door height on 2- and 4-drum models is 51-in (1.30-m) high and 80-in (2.03-m) high on 6- through 16-drum models. *Dimensions include mounting plates and door hardware.

†See inside front cover for Approval and Compliance Key.

In most instances, locker sizes 2- through 6-drum are available to ship via a closed container truck, which can potentially reduce freight costs as compared to flat bed shipping alternatives.



Six-drum locker with optional ramp offers a convenient way to load or unload heavy drums using a drum dolly.



Independently tested and approved 90-minute fire-rated door



UL Listed air flow vent



Hydraulic door closer

Outdoor Safety Lockers—2-hour Fire-Rated NEW

Fire-rated construction for safe storage of drums of flammables and combustibles

- 90-minute fire-rated door—third party tested and labeled.
- Gravity air flow vents—UL Listed fire dampers with fusible links.

Manufactured with fire-rated and weatherproof construction, each 2-hour locker has an FM-approved fire-rated wall and roof design and meets EPA 40 CFR, NFPA 30 and NFPA 1 regulations. Multiple layers of fire-resistant gypsum wall board are encased between exterior heavy gauge steel and interior galvanized sheet steel for maximum durability. A leakproof, all welded sump provides compliant secondary containment of hazardous liquids. Galvanized steel grate flooring removes easily for cleaning.

Gravity air flow vents include UL Listed fire dampers and fusible links for maximum safety. Hydraulic door mechanism ensures door will automatically close. Forty-two inch (1.07-m) wide door comes with UL Listed keyed lockset for security. Additional safety features include static grounding connections, anchoring plates, and NFPA 704 diamond decal.

Designed to be placed near existing structures and/or property set-backs, 2-hour fire-rated lockers provide a safe yet convenient storage solution. This improved proximity advantage over non-combustible lockers allows for more efficient use, distribution and storage of your flammables and combustibles. NOTE: Please check with your local authority having jurisdiction for set-back requirements and the correct wall/roof rating needed for your application.

Lockers are also available with FM-approved explosion relief panels that release at 20 psf to reduce the damage associated with a potential explosion.



Customize your locker . . .

For specific applications with optional features and accessories, including loading ramp, shelving, grounding kit, fire protection, lighting, and heating/cooling packages—go to justrite.com under Outdoor Safety Lockers in Products area.

2 HOUR
FIRE-RATED
OUTDOOR SAFETY LOCKERS



55-Gal. Drum Capacity	Sump Capacity Gallons/Liters	Dimensions W x D x H		Approval/Lstg Regulation†	Standard		Explosion Relief	
		Exterior*	Interior		Model No	Ship Wt lb/kg	Model No	Ship Wt lb/kg
2	88/333	71 in x 42 in x 75 in 1803 mm x 1067 mm x 1905 mm	53.5 in x 29.5 in x 54 in 1359 mm x 749 mm x 1372 mm	FM,N,A,E	912020	1821/826	912021	1775/805
4	80/303	71 in x 66 in x 75 in 1803 mm x 1676 mm x 1905 mm	53.5 in x 53.5 in x 60.5 in 1359 mm x 1359 mm x 1537 mm		912040	2521/1144	912041	2475/1123
6	116/439	95 in x 66 in x 97 in 2413 mm x 1676 mm x 2464 mm	77.5 in x 53.5 in x 82.5 in 1969 mm x 1359 mm x 2096 mm		912060	3505/1590	912061	3459/1569
9	168/636	95 in x 90 in x 97 in 2413 mm x 2286 mm x 2464 mm	77.5 in x 77.5 in x 82.5 in 1969 mm x 1969 mm x 2096 mm		912090	4408/1999	912091	4344/1970
12	221/837	88 in x 119 in x 97 in 2235 mm x 3023 mm x 2464 mm	77.5 in x 101.5 in x 82.5 in 1969 mm x 2578 mm x 2096 mm		912120	5225/2370	912121	5133/2328
16	288/1090	119 in x 114 in x 97 in 3023 mm x 2896 mm x 2464 mm	101.5 in x 101.5 in x 82.5 in 2578 mm x 2578 mm x 2096 mm		912160	6193/2809	912161	6095/2765

Note: Door height on 2- and 4-drum models is 51-in (1.30-m) high and 80-in (2.03-m) high on 6- through 16-drum models. *Dimensions include mounting plates and door hardware. †See inside front cover for Approval and Compliance Key.

In most instances, locker sizes 2- through 6-drum are available to ship via a closed container truck, which can potentially reduce freight costs as compared to flat bed shipping alternatives.

Outdoor Safety Lockers—4-hour Fire-Rated NEW

Higher fire rating—provides proximity advantage over non-combustible and 2-hour locker models

- 3-hour fire-rated door—third party tested and labeled.
- Gravity air flow vents—UL Listed fire dampers with fusible links.
- Leakproof all welded sump.

Manufactured with fire-rated and weatherproof construction, each 4-hour locker has an FM-approved fire-rated wall and roof design and meets EPA 40 CFR, NFPA 30 and NFPA 1 regulations. Multiple layers of fire-resistant gypsum wall board are encased between exterior heavy gauge steel and interior galvanized sheet steel for maximum durability. A leakproof, all welded sump provides compliant secondary containment of hazardous liquids. Galvanized steel grate flooring removes easily for cleaning.

Gravity air flow vents include UL Listed fire dampers and fusible links for maximum safety. Hydraulic door mechanism ensures door will automatically close. Forty-two inch (1.07-m) wide door comes with UL Listed keyed lockset for security. Additional safety features include static grounding connections, anchoring plates, and NFPA 704 diamond decal.

Designed to be placed within close proximity of existing structures and/or property set-backs, 4-hour fire-rated lockers provide a safe yet convenient storage solution. This proximity advantage over non-combustible and 2-hour lockers allows for the most efficient use, distribution and storage of your hazardous chemicals and drums of flammable liquids. NOTE: Please check with your local authority having jurisdiction for setback requirements and the correct wall/roof rating needed for your application.

Lockers are also available with FM-approved explosion relief panels that release at 20 psf to reduce the damage associated with a potential explosion.



Designed for close placement to existing structures, 4-hour fire-rated lockers provide a safe and convenient storage solution.



913060
6-drum capacity



Get answers to frequently asked questions . . .

Visit our website to learn more about choosing the proper locker design for your application, chemical storage guidelines, and more.

Global Protection

Justrite products are available worldwide. For pricing and availability, simply contact the authorized distributor nearest you.



55-Gal. Drum Capacity	Sump Capacity Gallons/Liters	Dimensions W x D x H		Approv/Lstg Regulation†	Standard		Explosion Relief	
		Exterior*	Interior		Model No	Ship Wt lb/kg	Model No	Ship Wt lb/kg
2	75/284	71 in x 42 in x 75 in 1803 mm x 1067 mm x 1905 mm	50.5 in x 26.5 in x 52.5 in 1283 mm x 673 mm x 1334 mm	FM,N,A,E	913020	2200/998	913021	2065/937
4	71/269	71 in x 66 in x 75 in 1803 mm x 1676 mm x 1905 mm	50.5 in x 50.5 in x 59 in 1283 mm x 1283 mm x 1499 mm		913040	3036/1377	913041	2901/1316
6	105/397	95 in x 66 in x 97 in 2413 mm x 1676 mm x 2464 mm	74.5 in x 50.5 in x 81 in 1892 mm x 1283 mm x 2057 mm		913060	4330/1964	913061	4195/1903
9	155/587	95 in x 90 in x 97 in 2413 mm x 2286 mm x 2464 mm	74.5 in x 74.5 in x 81 in 1892 mm x 1892 mm x 2057 mm		913090	5467/2480	913091	5270/2390
12	205/776	88 in x 119 in x 97 in 2235 mm x 3023 mm x 2464 mm	74.5 in x 98.5 in x 81 in 1892 mm x 2502 mm x 2057 mm		913120	6468/2934	913121	6198/2811
16	272/1030	119 in x 114 in x 97 in 3023 mm x 2896 mm x 2464 mm	98.5 in x 98.5 in x 81 in 2502 mm x 2502 mm x 2057 mm		913160	7740/3511	913161	7475/3391

Note: Door height on 2- and 4-drum models is 51-in (1.30-m) high and 80-in (2.03-m) high on 6- through 16-drum models. *Dimensions include mounting plates and door hardware. †See inside front cover for Approval and Compliance Key.

In most instances, locker sizes 2- through 6-drum are available to ship via a closed container truck, which can potentially reduce freight costs as compared to flat bed shipping alternatives.

Safety & Storage
Cabinets
Pages 3-17

Safety Cans &
Containers
Pages 18-30

Safety Showers
& Eye/Face Wash
Equipment
Pages 31-37

Drum Funnels &
Equipment
Page 38

Spill Control &
Environmental
Pages 39-40

Outdoor Safety
Lockers
Pages 41-43



Products that Protect People, Property, and the Environment



Classic 45-gal Safety Cabinet (page 3)



Polyethylene Cabinet for Corrosives (page 16)



Thermoplastic Carboys (page 20-24)



Cubicle Showers (page 37)