

PRODUCT
CATALOG



THE MARK OF **THE PRO**™

A WORLD LEADER IN PROFESSIONAL

For more than 60 years, pros have trusted the Werner brand to deliver superior climbing equipment. We manufacture a full line of professional grade products built to last for generations while withstanding the most challenging jobs. Werner ladders are constructed and tested under strict ANSI and OSHA standards to maximize reliability and safety for end users.

As a world leader, our industry reputation is anchored by a complete line of products strengthened by category management. We provide our distribution channels with multiple brands, merchandising solutions, marketing services and world-class safety training. Every Werner product purchased is backed by a company-wide commitment to unequalled service and quality. Our goal is simple – to help our customers successfully grow their business and provide end users the best climbing equipment available.

Our strategic worldwide network of manufacturing, sales and warehouse facilities is frequently expanding and adjusting to meet market needs. Each facility is fully staffed and features state-of-the-art technologies and processes. As a result, Werner delivers millions of climbing products at a great value to customers around the globe.



CLIMBING EQUIPMENT

Werner continually rises above the competition in the development of product innovations. We combine end user research with industry-leading manufacturing technologies to build ladders with the highest level of safety and productivity. This approach has given the Werner name a rich history of innovative features like the ALFLO® Twist-Proof® rung joint and the multifunctional HolsterTop®.

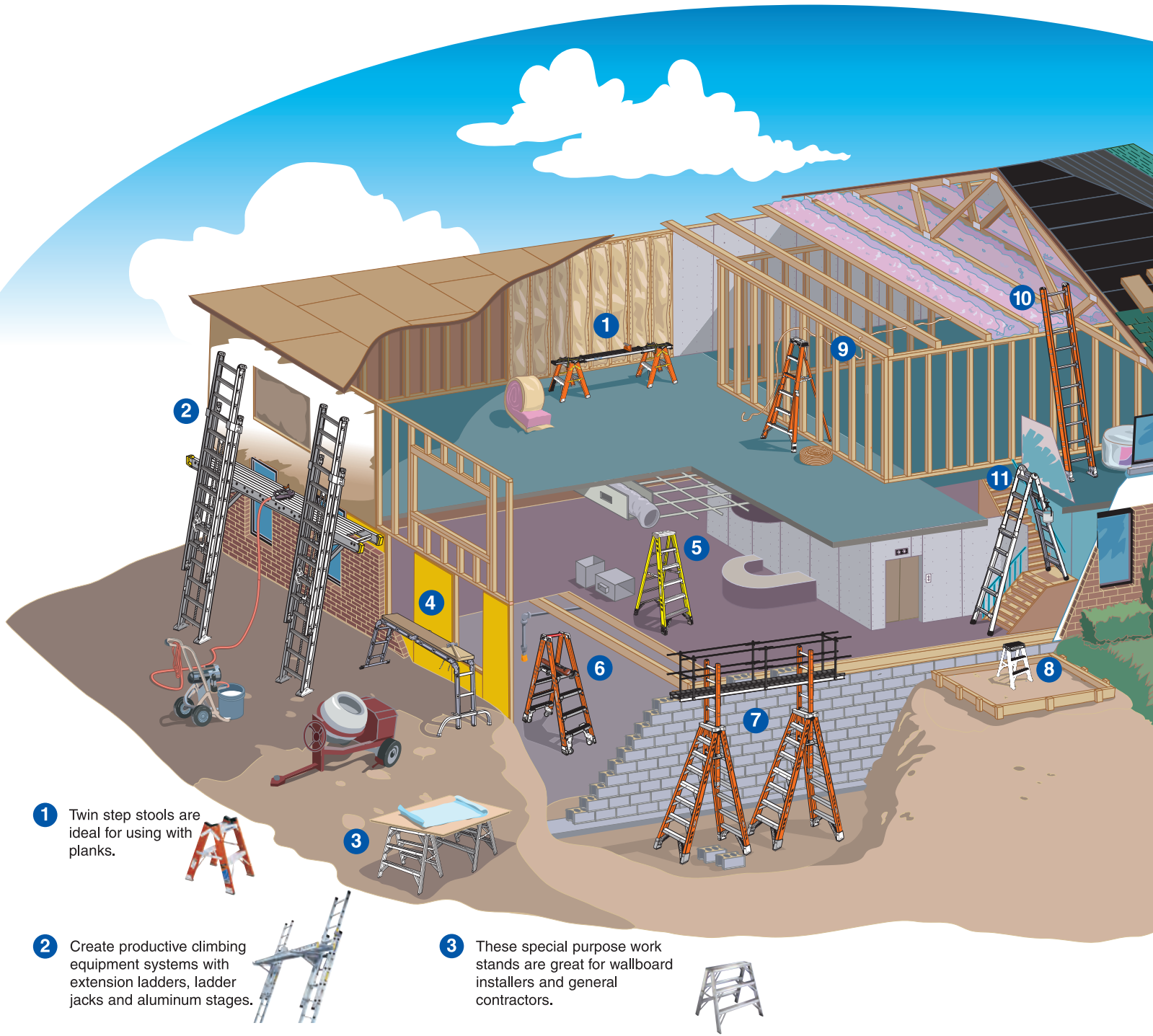
Werner is committed to continually reviewing and enhancing our product line. We know work can be tough, and we want to make it as easy as possible. That's why our ladders are designed and built for the pro. Werner ladders can be found on trucks traveling to and from work every day. The Werner oval might be under a layer of dirt and grime, but it's there and always on the job. From large-scale construction to professional painting, Werner ladders have been tested and proven to meet the demands of work sites everywhere.

On job sites across America, Werner is preferred more than any brand because innovation, safety and durability are built into every product.



THE MARK OF **THE PRO**™



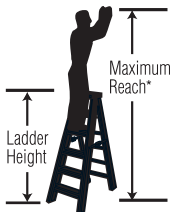


1 Twin step stools are ideal for using with planks.

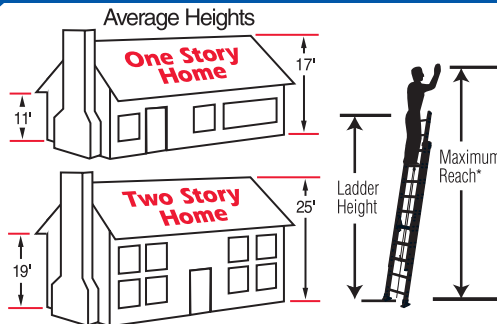
2 Create productive climbing equipment systems with extension ladders, ladder jacks and aluminum stages.

3 These special purpose work stands are great for wallboard installers and general contractors.

STEP 1 SELECT HEIGHT (SIZE)



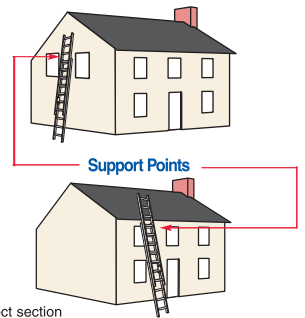
STEPLADDERS	
Ladder Height	Maximum Reach
4'	8'
6'	10'
7'	11'
8'	12'
10'	14'
12'	16'
14'	18'
16'	20'



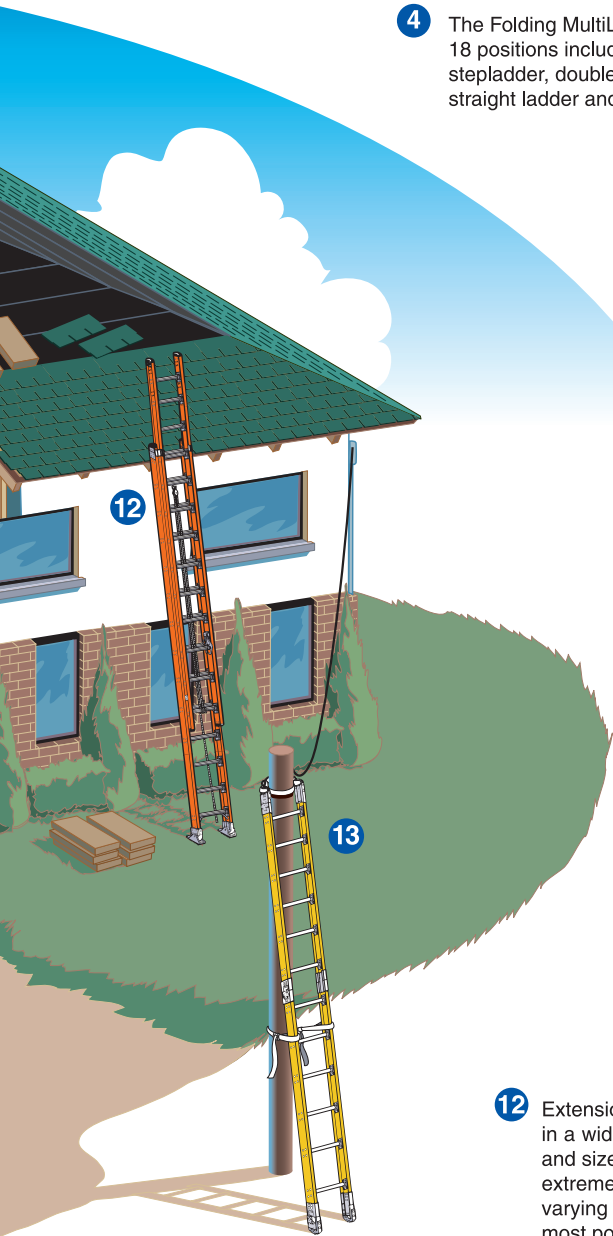
*Assumes a 5'6" person with a vertical 12" reach.

EXTENSION LADDERS		
Ladder Height	Maximum Reach	Height To Gutter or Top Support Point††
16'	15'	9' max.
20'	19'	9' to 13'
24'	23'	13' to 17'
28'	27'	17' to 21'
32'	31'	21' to 25'
36'	34'	25' to 28'
40'	37'	28' to 31'

†† Support points for extension ladders reflect section overlap, ladder angle, or 3' extension above roof line.



CHOOSING THE RIGHT LADDER FOR THE JOB



4 The Folding MultiLadder offers 18 positions including a stepladder, double stepladder, straight ladder and scaffold.



5 Stepladders are the most popular of all ladder styles. These ladders are often used for applications at low or medium heights. Ladder tops and pail shelves can hold tools, small parts and paint buckets.



6 Stockr's Ladder® combine a twin stepladder with a revolutionary warehouse type ladder with a large Pinch-Proof™ platform.



7 Adjustable center trestle system often used in pairs with either a 12" or 14" wide stage or plank to work inside industrial buildings, and by sign hangers to work for long time periods at fixed heights.



8 Lightweight, sturdy and compact, step stools are handy for many applications. Unlike regular stepladders, you can stand on the top.



9 Tripod ladders enhance stability on uneven surfaces such as construction sites. The back rail fits easily into tight corners and other confined spaces. Often used by electricians for installing wire between framing studs.



10 Single one-section non-extendible ladders provide easy access to mid-range heights.



11 The Telescoping MultiLadder can be used as a Twin Stepladder, Extension Ladder, Stairway Stepladder or 2-Scaffold bases.



12 Extension ladders are available in a wide assortment of types and sizes. They can handle an extremely wide range of tasks at varying elevations and are the most popular kind of long ladders.



13 Sectional ladders are designed for use mainly by electrical, telephone, and cable utilities. They provide versatility in applications where transit, storage or access requires short sections to be coupled together.



STEP 2 SELECT PERFORMANCE (DUTY RATING)

WERNER PERFORMANCE SYSTEM

Color Match for Ladder Performance.

★ 200 lbs. ★★ 225 lbs. ★★★ 250 lbs. ★★★★ 300 lbs. ★★★★★ 375 lbs.

Includes User and Materials

STEP 3 SELECT MATERIAL

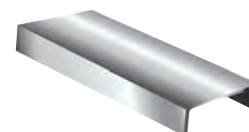
FIBERGLASS

For working around electricity
Non-conductive side rails



ALUMINUM

Not for use around electricity
Lightweight





THE MARK OF THE PRO™

PRODUCT CERTIFICATIONS

Werner ladders are manufactured and tested to the strictest quality standards. All Werner ladders meet or exceed American National Standards Institute (ANSI) and Occupational Safety and Health Administration (OSHA) requirements, where applicable.



200 lbs.*	Economical design for lightweight use	Type III
225 lbs.*	Basic design for simple projects	Type II
250 lbs.*	Designed to handle most projects and jobs	Type I
300 lbs.*	Rugged performance designed with the pro in mind	Type IA
375 lbs.*	Maximum performance and durability for the toughest jobs	Type IAA

*Includes User and Materials



OCCUPATIONAL SAFETY AND HEALTH ADMINISTRATION CODE

All Type II, I, IA and IAA fiberglass, aluminum and wood ladders, ladder jacks and extension planks meet or exceed code. OSHA CODE applies to ladders used in the workplace. Werner Co. recommends Type II or heavier duty rated ladders for these applications.



AMERICAN NATIONAL STANDARDS INSTITUTE PRODUCT LINES MEET OR EXCEED ANSI CODE

- Fiberglass Ladders A14.5 (2007)
- Aluminum Ladders A14.2 (2007)
- Ladder Jacks A10.8 (2001)
- Extension Planks A10.8 (2001)
- Scaffolding A10.8 (2001)
- Stages A10.8 (2001)
- Work Platforms A10.8 (2001)
- Attic Ladders..... A14.9 (2010)



All Werner fiberglass ladders have electrically non-conductive rails. This is a great benefit for those working near electricity. Durable seven-layer fiberglass-constructed rails also maintain a smooth surface even after weathering.



CLIMBING PROSM

SAFETY TRAINING

AVAILABLE ONLINE OR AS A PRINTED KIT

English and Spanish versions available!

This training program is designed to help you provide state-of-the-art training. Whether it is online or from a kit, Climbing Pro offers an interactive way to educate users how to safely climb.

- New and improved courses
- New online training
- Updated training kits
- Monitoring and measurement tools for reporting to key customers

www.wernerclimbingpro.com

Online Courses

- Knowledge check points throughout courses
- Stop and restart as you need, keeps track of where you left off
- Multimedia and interactive simulations
- Ongoing updates for additional courses





TABLE OF CONTENTS

SERIES/MODEL	PAGE
FIBERGLASS STEPLADDERS	1
7400 SERIES	1
T7400 SERIES	2
P7400 SERIES	2
PT7400/PT7400-4C SERIES	3
E7400 SERIES	3
7300 SERIES	4
OBEL00 SERIES	4
OBPT00 SERIES	5
OBCN00 SERIES	5
SSF00 SERIES	6
TW6200 SERIES	6
6202 MODEL	6
T6202 MODEL	6
6200 SERIES	7
T6200 SERIES	7
P6200 SERIES	8
6100 SERIES	8
FTP6200 SERIES	9
6002 MODEL	9
6000 & 6000S SERIES	10
T6000 SERIES	10
PT6000/PT6000-4C SERIES	11
5900 & 5900S SERIES	11
FIBERGLASS STEPLADDER COMPARISON CHART	12
FIBERGLASS EXTENSION LADDERS	13
D7100-2LV SERIES	13
D7100-2 SERIES	14
7100-2/7100-1 SERIES	14
D8200-2EQ SERIES	15
D6200-2/D6200-1 SERIES	15
D6000-2 SERIES	16
D5900-2 SERIES	16
FIBERGLASS EXT. LADDER COMPARISON CHART	17
FIBERGLASS SPECIALTY LADDERS	18
7800 SERIES	18
M7100-1 SERIES	18
S7900 SERIES	19
9500-2/9500-1 SERIES	19
SPF00-1/TPF00-1 SERIES	20
S7700 SERIES	20

SERIES/MODEL	PAGE
ALUMINUM STEPLADDERS	21
400 SERIES	21
T400 SERIES	21
P400 SERIES	22
370 SERIES	22
T370 SERIES	23
P370 SERIES	23
PT370 SERIES	24
SH378 MODEL	24
SSA00 SERIES	25
TW370-30 SERIES	25
150B MODEL	25
T372 MODEL	25
360 SERIES	26
350 SERIES	26
244 MODEL	27
260 SERIES	27
ALUMINUM STEPLADDER COMPARISON CHART	28
ALUMINUM EXTENSION LADDERS	29
500-1 SERIES	29
D500-2	29
D1500-2/D1500-1 SERIES	30
560-3 MODEL	30
D1800-2EQ SERIES	31
D1300-2 SERIES	31
D1700-2EQ SERIES	32
D1200-2 SERIES	32
D1100-2 SERIES	33
D716-2 MODEL	33
ALUMINUM EXT. LADDER COMPARISON CHART	34
MULTILADDERS	35
MT SERIES	35
M1 SERIES	35
WAREHOUSE LADDERS	36
STANDARD ANGLE STEEL WAREHOUSE LADDER	36
SAFETY ANGLE STEEL WAREHOUSE LADDER	36

TABLE OF CONTENTS

SERIES/MODEL	PAGE
ATTIC LADDERS	37
A SERIES	37
AL2210 MODEL	37
AA SERIES	38
WH SERIES	38
W SERIES	38
ATTIC LADDER COMPARISON CHART	39
FIRE ESCAPE LADDERS	40
ESC SERIES	40
PORTABLE SCAFFOLDING	40
AP-20-MP6 MODEL	40
PS-48 MODEL	41
SRS-72 MODEL	41
WORK PLATFORMS	42
PA200 SERIES	42
5600 SERIES	42
5500 SERIES	42
5300 SERIES	42
PUMP JACKS	43
ALUMINUM PUMP JACK SYSTEM	43
STEEL PUMP JACK SYSTEM	44
SCAFFOLDING & STAGES	45
ALUMINUM TASK-MASTER® STAGES	45
GUARD RAIL SYSTEMS	46
ALUMINUM SCAFFOLD TOWERS	48
SCAFFOLD SECTIONS	49
SCAFFOLD COMPONENTS	50
SCAFFOLD/OUTRIGGER COMPONENT COMPARISON CHART	51
RAMPS, RACKS & MERCHANDISING	52
R522 MODEL - FOLDING ARCHED RAMPS	52
R402 MODEL - ARCHED RAMPS	52
R301 MODEL - STRAIGHT RAMPS	53
R102 MODEL - STRAIGHT RAMP KIT	53
TR101-S MODEL - TRUCK RACK	54
TR501-S MODEL - TRUCK RACK	54
VR101-W MODEL - VAN RACK	55
MERCHANDISING MODULAR LADDER DISPLAYS & FIXTURES	55

SERIES/MODEL	PAGE
ACCESSORIES	56
HOW TO ORDER	56
FACTORY INSTALLED ACCESSORY KITS	56
LOCK-IN ACCESSORIES (AC27-P, AC27-L, AC50-JB-3)	57
LOCK-IN ACCESSORIES (AC52-UB, AC54-JC, AC56-UH, AC58-TL)	58
STEPLADDER ACCESSORIES (AC11, PK76, 76, 21, 22, AC24, 40)	59
EXTENSION LADDER ACCESSORIES (LADDER JACKS, AC18MT, AC19, AC22, ROOF BRACKETS, AC20, AC78)	60
EXTENSION LADDER ACCESSORIES (AC96, PK70-1/APK70, PK70-2, PK70-3, PK80/APK80, 71/A71)	61
EXTENSION LADDER ACCESSORIES (72/A72, 74/A74, 81/A81, 86/A86, A61, A78, A83)	62
EXTENSION LADDER ACCESSORIES (91, 92/A92, 94, 97P, 89)	63
INDEX	64-65



THE BEST TOPS IN THE INDUSTRY



Customize your ladder top with the Lock-In Accessory System



Sturdy paint can hanger decreases chances of spilling



Paint roller tray slots make painting large surfaces simple



Keeps tools within easy reach with the HolsterTop®



Convenient pail shelf provides additional work surface



7400SERIES

★★★★★ **375lbs.**

LOAD CAPACITY

TYPE IAA
DUTY RATING

STYLE: Stepladder



* Energy Diffusing Geometry

- Every rivet backed up by metal plate or washer to protect rails

SPECIFICATIONS

Model No.	Size	Approx. Width	Approx. Spread	Approx. Cu. Ft. Per Unit	Approx. Shipping Wt. Lbs.
7403	3'	19-3/4"	24-3/8"	2.5	13.5
7404	4'	21-1/2"	30-1/2"	3.5	16.5
7405	5'	23-1/4"	36-3/4"	4.6	20.0
7406	6'	25"	42-7/8"	5.8	23.5
7407	7'	26-3/4"	49"	7.1	28.0
7408	8'	28-1/2"	55-1/4"	8.5	32.0
7410	10'	32"	67-1/2"	11.4	40.5
7412	12'	35-1/2"	79-7/8"	14.8	49.5

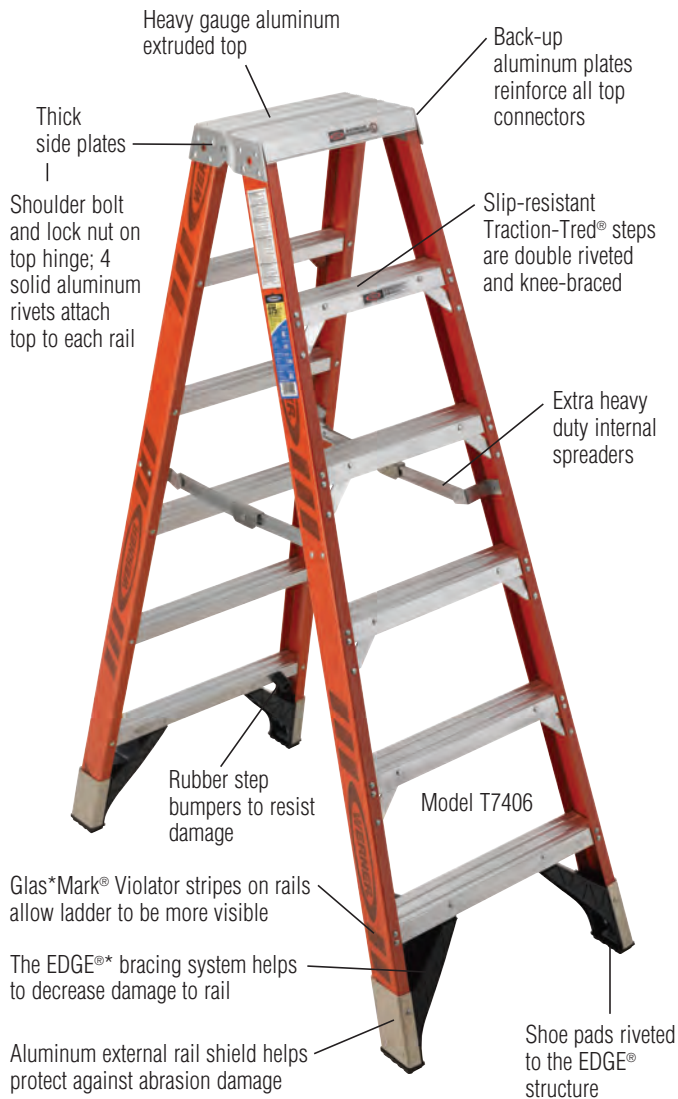
DIMENSIONS

Top:	7-1/4" x 14-7/8"	Steps:	3" wide
Front Rails:	3-1/8" wide	Rear Rails:	1-7/8" wide
Front Flange:	1-3/16" wide	Rear Flange:	1-3/16" wide

T7400SERIES

★★★★★ **375lbs.** LOAD CAPACITY **TYPE IAA**
PER SIDE DUTY RATING

STYLE: Multi-Use Twin Stepladder††



- * Energy Diffusing Geometry
- Every rivet backed up by metal plate or washer to protect rails

SPECIFICATIONS NOTE: Type IAA duty rating is for stepladders up to 12 ft.

Model No.	Size	Approx. Width	Approx. Spread	Approx. Cu. Ft. Per Unit	Approx. Shipping Wt. Lbs.
T7404	4'	21-1/2"	36-1/8"	4.5	21.5
T7405	5'	23-1/2"	43-1/8"	5.8	29.0
T7406	6'	25"	50-1/8"	7.3	30.0
T7408	8'	28-1/2"	64-1/8"	10.5	40.5
T7410	10'	32"	78-1/4"	14.2	51.5
T7412	12'	35-1/2"	92-1/4"	18.3	63.5

★★★★★ **300lbs.** LOAD CAPACITY **TYPE IA**
PER SIDE DUTY RATING

T7414	14'	39"	106-1/4"	22.8	86.0
T7416	16'	42-1/2"	120-1/4"	27.7	103.5
T7418	18'	46"	136-1/8"	33.1	126.0
T7420	20'	49-1/2"	150-1/8"	38.8	149.0

††Designed for one or two person jobs. Note: When used as a double stepladder, the maximum load per side, including person and materials, shall not exceed the duty rating of ladder.

DIMENSIONS

Top:	8-1/4" x 14-1/2"	Steps:	3" wide
Rails:	3-1/8" wide	Flange:	1-3/16" wide

P7400SERIES

★★★★★ **375lbs.** LOAD CAPACITY **TYPE IAA**
PER SIDE DUTY RATING

STYLE: Platform Ladder



- * Energy Diffusing Geometry
- Every rivet backed up by metal plate or washer to protect rails
- Internal aluminum spreaders on 8' and 10' models

SPECIFICATIONS NOTE: Type IAA duty rating is for platforms ranging in size from 3' to 8'

Model No.	Height (Size) to Platform	Rail Length	Approx. Width	Approx. Spread	Approx. Cu. Ft. Per Unit	Approx. Shipping Wt. Lbs.
P7403	3'	5'	25-1/4"	35-7/8"	5.1	22.0
P7404	4'	6'	27"	42"	6.4	26.0
P7406	6'	8'	30-1/2"	54-3/8"	9.1	34.0
P7408	8'	10'	34"	66-5/8"	12.2	44.5

★★★★★ **300lbs.** LOAD CAPACITY **TYPE IA**
PER SIDE DUTY RATING

P7410	10'	12'	37-1/2"	79"	15.6	54.5
P7412	12'	14'	42"	91-1/4"	19.3	68.5

††Designed for one or two person jobs. Note: When used as a double stepladder, the maximum load per side, including person and materials, shall not exceed the duty rating of ladder.

DIMENSIONS

Platform:	14-5/8" x 15"	Steps:	3" wide
Front Rails:	3-1/8" wide	Rear Rails:	1-7/8" wide
Front Flange:	1-3/16" wide	Rear Flange:	1-3/16" wide



PT7400/PT7400-4C SERIES

★★★★ **300 lbs.** LOAD CAPACITY **TYPE IA**
PER SIDE DUTY RATING

STYLE: Stockr's Ladder®††



- Easy to handle and folds to a 12" width for storage
- Unique combination of one person, two person†† and platform ladder use
- Internal Pinch-Proof™ aluminum spreaders on 8' and 10' models
- Requires less floor space than heavy steel rolling ladders

SPECIFICATIONS

Model No.	Height (Size) to Platform	Rail Length	Approx. Width	Approx. Spread	Approx. Cu. Ft. Per Unit	Approx. Shipping Wt. Lbs.	Model No. with Casters	Approx. Shipping Wt. Lbs.
PT7404	4'	6'	25-1/4"	50"	8.4	31.0	PT7404-4C	37.0
PT7406	6'	8'	28-3/4"	64"	12.7	41.5	PT7406-4C	53.0
PT7408	8'	10'	32-1/4"	78-1/4"	17.8	54.5	PT7408-4C	60.5
PT7410	10'	12'	35-3/4"	92-1/4"	23.7	66.0	PT7410-4C	72.5

††Designed for one or two person jobs. Note: When used as a double stepladder, the maximum load per side, including person and materials, shall not exceed the duty rating of ladder.

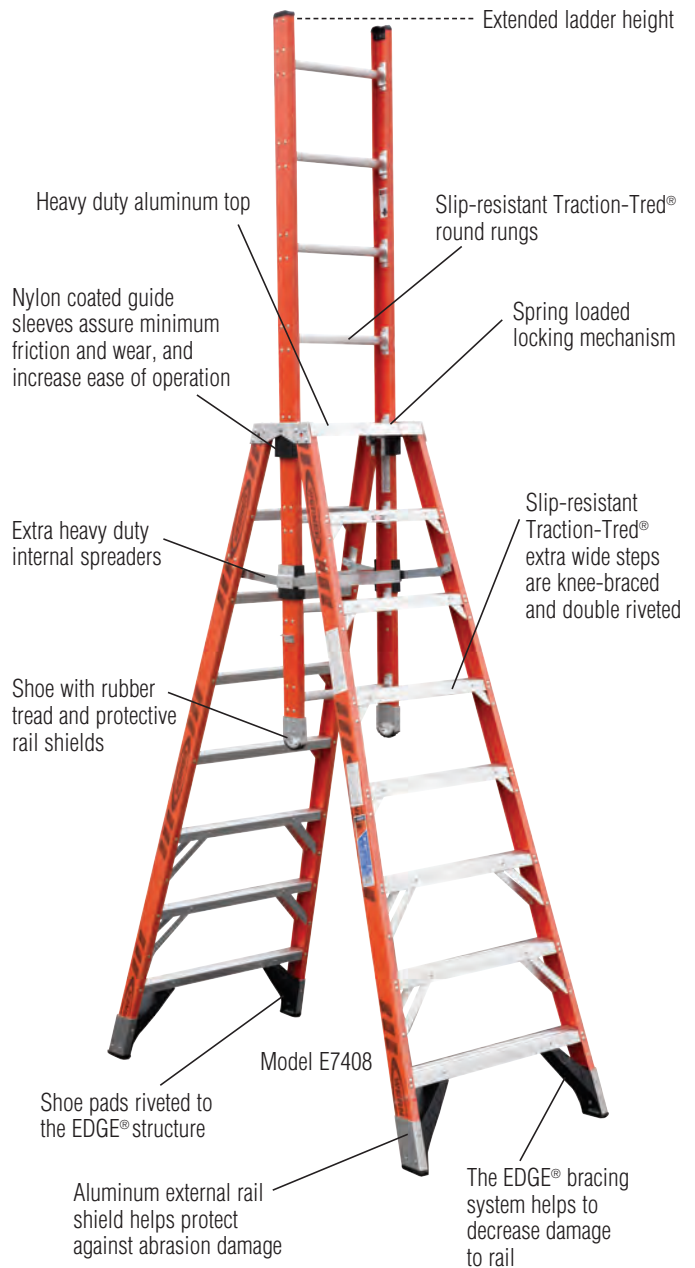
DIMENSIONS

Platform:	12-3/4" x 22"	Steps:	3" wide
Rails:	3-1/8" wide	Flange:	1-3/16" wide

E7400 SERIES

★★★★ **300 lbs.** LOAD CAPACITY **TYPE IA**
PER SIDE DUTY RATING

STYLE: Extension Trestle Ladder††



SPECIFICATIONS

Model No.	Stepladder Size	Base Section Bottom Width	Approx. Spread	Approx. Extended Ladder Height	Approx. Cu. Ft. Per Unit	Approx. Shipping Wt. Lbs.
E7408	8'	32-3/4"	67-3/4"	12'	16.6	74.0
E7410	10'	36-1/4"	81-7/8"	15'	22.2	95.5
E7412	12'	39-3/4"	95-7/8"	19'	28.3	113.5
E7414	14'	43-1/4"	109-3/4"	22'	35.1	135.5
E7416	16'	46-3/4"	123-3/4"	26'	42.4	158.0

††Designed for one or two person jobs. Note: When used as a double stepladder, the maximum load per side, including person and materials, shall not exceed the duty rating of ladder.

DIMENSIONS

Extended Ladder		Stepladder	
Rails:	3-3/8" wide	Rails:	3-3/16" wide (8'-12") 3-5/16" wide (14'-16")
Rungs:	1-1/4"	Steps:	3" wide
Flange:	1-3/16" wide	Flange:	1-3/16" wide

7300SERIES

★★★★★ **375lbs.** LOAD CAPACITY TYPE IAA DUTY RATING

STYLE: Stepladder



* Energy Diffusing Geometry

- Every rivet backed up by metal plate or washer to protect rails

SPECIFICATIONS

Model No.	Size	Approx. Width	Approx. Spread	Approx. Cu. Ft. Per Unit	Approx. Shipping Wt. Lbs.	Model No. with Pail Shelf	Approx. Shipping Wt. Lbs.
7303	3'	19-3/4"	23-1/2"	2.5	13.0	7303S	16.5
7304	4'	21-1/2"	29-3/4"	3.5	16.0	7304S	19.5
7305	5'	23-1/4"	35-7/8"	4.6	19.5	7305S	23.0
7306	6'	25"	42"	5.8	22.5	7306S	26.0
7308	8'	28-1/2"	54-3/4"	8.5	31.0	7308S	34.0
7310	10'	32"	66-5/8"	11.4	40.5	7310S	43.5
7312	12'	35-1/2"	79"	14.8	50.0	7312S	53.0

DIMENSIONS

Top:	7-1/4" x 14-7/8"	Steps:	3" wide
Front Rails:	3-1/8" wide	Rear Rails:	1-7/8" wide
Front Flange:	1-3/16" wide	Rear Flange:	1-3/16" wide

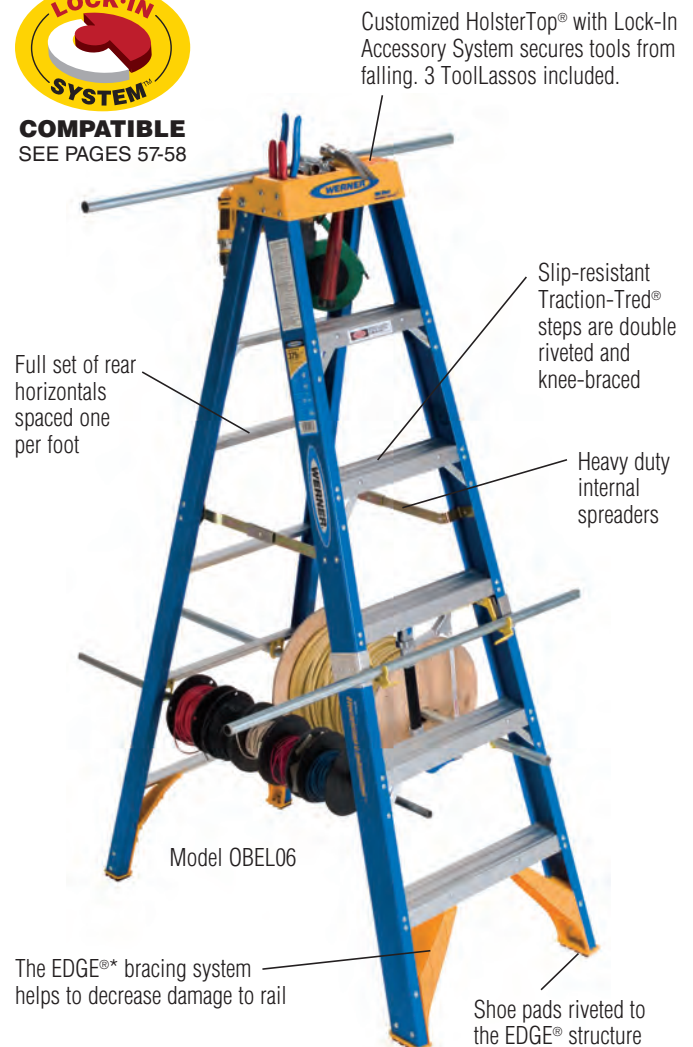
OBEL00SERIES

★★★★★ **375lbs.** LOAD CAPACITY TYPE IAA DUTY RATING

STYLE: Old Blue® Series Electrician's Jobstation™



COMPATIBLE
SEE PAGES 57-58



Convenient conduit cutting system



HolsterTop® customized for electricians



Built-in wire spool holders for both large and small spools

* Energy Diffusing Geometry

- Every rivet backed up by metal plate or washer to protect rails

© The blue and yellow ladder is an exclusive registered trademark of Werner Co.

SPECIFICATIONS

Model No.	Size	Approx. Width	Approx. Spread	Approx. Cu. Ft. Per Unit	Approx. Shipping Wt. Lbs.
OBEL04	4'	19-7/8"	29"	3.0	16.0
OBEL06	6'	23-3/8"	41-1/4"	5.3	24.0
OBEL08	8'	26-7/8"	53-5/8"	8.1	32.0
OBEL10	10'	30-3/8"	65-7/8"	12.5	41.0
OBEL12	12'	33-7/8"	78-1/4"	15.0	51.5

DIMENSIONS

Top:	5-3/4" x 13"	Steps:	3" wide
Front Rails:	3-1/8" wide	Rear Rails:	1-7/8" wide
Front Flange:	1-3/16" wide	Rear Flange:	1-3/16" wide



OBPT00SERIES

★★★★★ **375lbs.** LOAD CAPACITY **TYPE IAA** DUTY RATING

STYLE: Old Blue® Series Pipe Trade Jobstation™



COMPATIBLE
SEE PAGES 57-58

Customized HolsterTop® with Lock-In Accessory System secures tools from falling. 3 ToolLassos included.



Model OBPT06

The EDGE®* bracing system helps to decrease damage to rail

Shoe pads riveted to the EDGE® structure



Pipe cutting and assembly system fits 1/2" to 3" pipe



HolsterTop® customized for the pipe trade



Multi-use hook for saws, buckets, etc.

* Energy Diffusing Geometry

• Every rivet backed up by metal plate or washer to protect rails

© The blue and yellow ladder is an exclusive registered trademark of Werner Co.

SPECIFICATIONS

Model No.	Size	Approx. Width	Approx. Spread	Approx. Cu. Ft. Per Unit	Approx. Shipping Wt. Lbs.
OBPT06	6'	23-3/8"	41-1/4"	5.3	24.0
OBPT08	8'	26-7/8"	53-5/8"	8.1	32.0

DIMENSIONS

Top:	5-3/4" x 13"	Steps:	3" wide
Front Rails:	3-1/8" wide	Rear Rails:	1-7/8" wide
Front Flange:	1-3/16" wide	Rear Flange:	1-3/16" wide

OBCN00SERIES

★★★★★ **375lbs.** LOAD CAPACITY **TYPE IAA** DUTY RATING

STYLE: Old Blue® Series Contractor's Jobstation™



COMPATIBLE
SEE PAGES 57-58

Customized HolsterTop® with Lock-In Accessory System secures tools from falling. 3 ToolLassos included.



Model OBCN06

The EDGE®* bracing system helps to decrease damage to rail

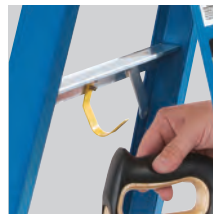
Shoe pads riveted to the EDGE® structure



MagnaGrip™ heavy duty magnet secures hardware



HolsterTop® customized for contractors



Multi-Use hook for hanging tools and buckets

* Energy Diffusing Geometry

• Every rivet backed up by metal part or washer to protect rails

© The blue and yellow ladder is an exclusive registered trademark of Werner Co.

SPECIFICATIONS

Model No.	Size	Approx. Width	Approx. Spread	Approx. Cu. Ft. Per Unit	Approx. Shipping Wt. Lbs.
OBCN06	6'	23-3/8"	41-1/4"	5.3	23.0
OBCN08	8'	26-7/8"	53-5/8"	8.1	31.0

DIMENSIONS

Top:	5-3/4" x 13"	Steps:	3" wide
Front Rails:	3-1/8" wide	Rear Rails:	1-7/8" wide
Front Flange:	1-3/16" wide	Rear Flange:	1-3/16" wide

SSF00SERIES

★★★★★ **375lbs.** LOAD CAPACITY **TYPE IAA** DUTY RATING

STYLE: Step Stand



SPECIFICATIONS

Model No.	Size	Maximum Standing Height	Approx. Width	Approx. Spread	Approx. Cu. Ft. Per Unit	Approx. Shipping Wt. Lbs.
SSF02	2'	20"	17"	21"	2.6	15.0
SSF03	3'	30"	18-3/4"	27-1/2"	4.0	19.5

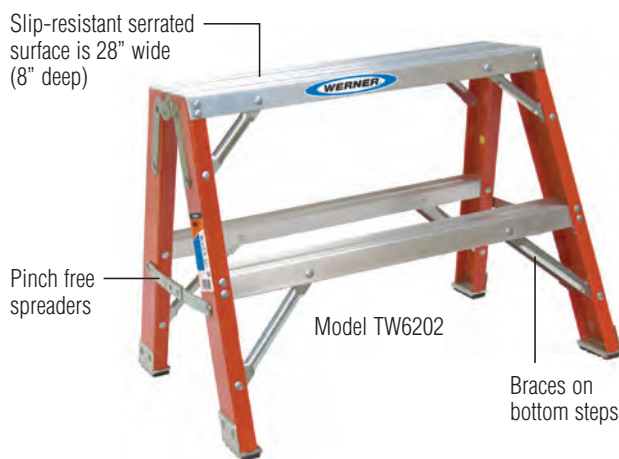
DIMENSIONS

Top:	9" x 14"	Steps:	6" wide
Front Rails:	6" wide	Rear Rails:	1-7/8" wide
Front Flange:	1-1/8" wide	Rear Flange:	1-3/16" wide

TW6200SERIES

★★★★★ **300lbs.** LOAD CAPACITY **PER SIDE** **TYPE IA** DUTY RATING

STYLE: Portable Work Stand^{††}



SPECIFICATIONS

Model No.	Size	Approx. Width	Approx. Spread	Approx. Cu. Ft. Per Unit	Approx. Shipping Wt. Lbs.
TW6202	2'	31-1/4"	22-1/4"	3.0	17.0
TW6203	3'	32-3/4"	29-3/4"	4.7	24.0

^{††} Designed for one or two person jobs. Note: When used as a double stepladder, the maximum load per side, including person and materials, shall not exceed the duty rating of ladder.

DIMENSIONS

Top:	8" x 28"	Steps:	3" wide
Rails:	3-1/4" wide	Flange:	1-3/16" wide

6202MODEL

★★★★★ **300lbs.** LOAD CAPACITY **TYPE IA** DUTY RATING

STYLE: Step Stool



SPECIFICATIONS

Model No.	Size	Approx. Width	Approx. Spread	Approx. Cu. Ft. Per Unit	Approx. Shipping Wt. Lbs.
6202	2'	17-1/4"	19-1/2"	1.4	9.0

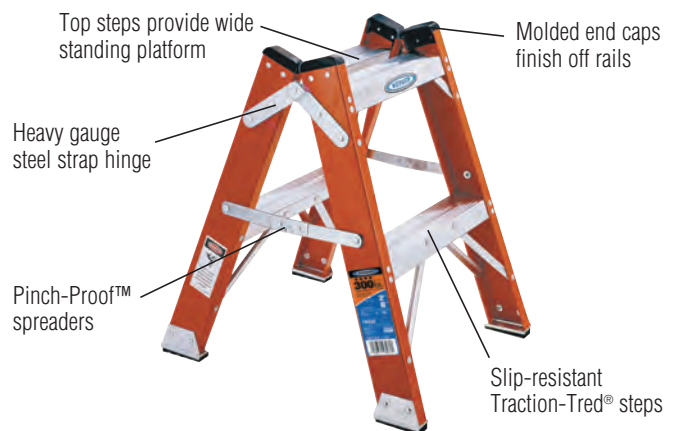
DIMENSIONS

Top:	5-5/8" x 12-3/8"	Steps:	3" wide
Front Rails:	3-1/8" wide	Rear Rails:	1-3/4" wide
Front Flange:	1-3/16" wide	Rear Flange:	1-3/16" wide, 5/8" wide front

T6202MODEL

★★★★★ **300lbs.** LOAD CAPACITY **PER SIDE** **TYPE IA** DUTY RATING

STYLE: Twin Step Stool^{††}



SPECIFICATIONS

Model No.	Size	Approx. Width	Approx. Spread	Approx. Cu. Ft. Per Unit	Approx. Shipping Wt. Lbs.
T6202	2'	21-1/8"	23"	2.1	11.5

^{††} Designed for one or two person jobs. Note: When used as a double stepladder, the maximum load per side, including person and materials, shall not exceed the duty rating of ladder.

DIMENSIONS

Steps:	3" wide
Rails:	3-1/8" wide
Flange:	1-3/16" wide

Note: Planks or platforms shall be secured to the step stools. The ends of each plank or platform shall extend beyond the outside edge of each step stool by a minimum of 4 inches and a maximum of 10 inches.



6200 SERIES

★★★★ **300 lbs.** LOAD CAPACITY **TYPE IA** DUTY RATING

STYLE: Stepladder



COMPATIBLE
SEE PAGES 57-58



Model 6206

* Energy Diffusing Geometry

- Every rivet backed up by metal plate or washer to protect rails
- Optional yellow molded pail shelf kit, model no. 76-2



The Lock-In Accessory System lets you customize your ladder top and safely secure your tools.

EDGE® bracing provides enhanced strength and increased protection against damage

SPECIFICATIONS

Model No.	Size	Approx. Width	Approx. Spread	Approx. Cu. Ft. Per Unit	Approx. Shipping Wt. Lbs.
6203	3'	18-1/8"	23-1/8"	2.0	13.0
6204	4'	19-7/8"	29"	3.0	16.0
6205	5'	21-5/8"	35-1/8"	4.1	19.0
6206	6'	23-3/8"	41-1/4"	5.3	22.0
6207	7'	25-1/8"	47-1/2"	6.6	26.0
6208	8'	26-7/8"	53-5/8"	8.1	30.0
6210	10'	30-3/8"	65-7/8"	12.5	39.0
6212	12'	33-7/8"	78-1/4"	15.0	48.0

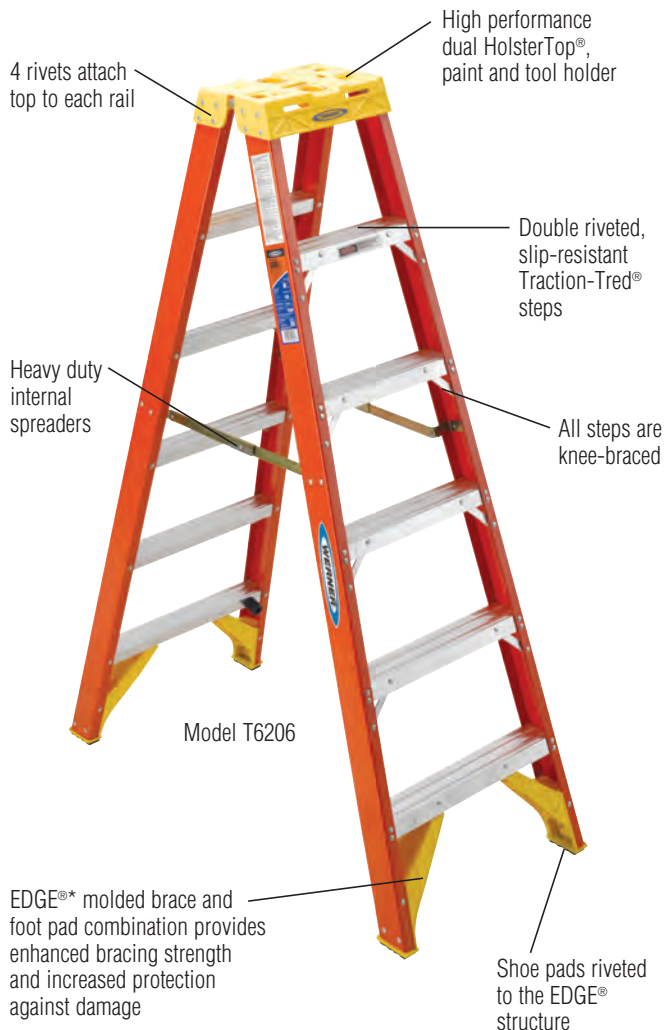
DIMENSIONS

Top:	5-3/4" x 13"	Steps:	3" wide
Front Rails:	3-1/8" wide	Rear Rails:	1-7/8" wide
Front Flange:	1-3/16" wide	Rear Flange:	1-3/16" wide

T6200 SERIES

★★★★ **300 lbs.** LOAD CAPACITY **TYPE IA** DUTY RATING **PER SIDE**

STYLE: Twin Stepladder††



Model T6206

* Energy Diffusing Geometry

- Every rivet backed up by metal plate or washer to protect rails

SPECIFICATIONS

Model No.	Size	Approx. Width	Approx. Spread	Approx. Cu. Ft. Per Unit	Approx. Shipping Wt. Lbs.
T6203	3'	18-1/8"	29"	3.1	16.0
T6204	4'	19-7/8"	36-1/8"	4.6	19.0
T6205	5'	21-5/8"	43-1/8"	6.2	23.0
T6206	6'	23-3/8"	50-1/8"	8.0	27.0
T6208	8'	26-7/8"	64-1/8"	12.3	37.0
T6210	10'	30-3/8"	78-1/8"	17.3	54.5
T6212	12'	33-7/8"	92-1/8"	23.2	68.5

†† Designed for one or two person jobs. Note: When used as a double stepladder, the maximum load per side, including person and materials, shall not exceed the duty rating of ladder.

DIMENSIONS

Top:	8-1/2" x 13"	Steps:	3" wide
Rails:	3-1/8" wide	Flange:	1-3/16" wide

P6200SERIES

★★★★ **300lbs.** LOAD CAPACITY **TYPE IA** DUTY RATING

STYLE: Platform Ladder



- * Energy Diffusing Geometry
- Every rivet backed up by metal plate or washer to protect rails
 - Internal aluminum spreaders on 8' and 10' models

SPECIFICATIONS

Model No.	Height (Size) to Platform	Rail Length	Approx. Width	Approx. Spread	Approx. Cu. Ft. Per Unit	Approx. Shipping Wt. Lbs.
P6202	2'	4'	23-3/8"	29-3/4"	4.2	17.0
P6204	4'	6'	26-7/8"	42"	7.2	24.0
P6206	6'	8'	30-3/8"	54-3/4"	10.9	32.0
P6208	8'	10'	33-7/8"	66-5/8"	15.2	44.5
P6210	10'	12'	37-3/8"	79"	20.1	55.0

DIMENSIONS

Platform:	14-5/8" x 15"	Steps:	3" wide
Front Rails:	3-1/8" wide	Rear Rails:	1-7/8" wide
Front Flange:	1-3/16" wide	Rear Flange:	1-3/16" wide

6100SERIES

★★★★ **300lbs.** LOAD CAPACITY **TYPE IA** DUTY RATING

STYLE: Stepladder



COMPATIBLE
SEE PAGES 57-58



SPECIFICATIONS

Model No.	Size	Approx. Width	Approx. Spread	Approx. Cu. Ft. Per Unit	Approx. Shipping Wt. Lbs.
6104	4'	19"	28-7/8"	2.6	15.0
6106	6'	22"	41-1/8"	4.5	21.0
6108	8'	25"	53-1/2"	6.8	30.0
6110	10'	28"	65-3/4"	13.0	35.5
6112	12'	31"	78-1/8"	17.3	44.0

DIMENSIONS

Top:	5-3/4" x 13"	Steps:	3" wide
Front Rails:	3-1/8" wide	Rear Rails:	1-7/8" wide
Flange:	1-3/16" wide		



FTP6200 SERIES

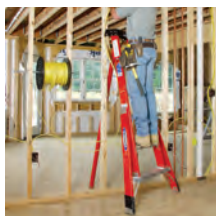
★★★★

300lbs.

LOAD CAPACITY

TYPE IA
DUTY RATING

STYLE: Tripod Stepladder



Single rear rail allows FTP Series to rest where other ladders can't



Convenient spreader handle design improves setup and transportability



Makes working in tight spaces easy

- Every rivet backed up by metal plate or washer to protect rails
- Internal aluminum spreaders on 8' and 10' models

SPECIFICATIONS

Model No.	Size	Approx. Width	Approx. Spread	Approx. Cu. Ft. Per Unit	Approx. Shipping Wt. Lbs.
FTP6204	4'	31"	30-1/2"	3.7	17.0
FTP6206	6'	36"	43-3/4"	6.8	23.0
FTP6208	8'	40"	57"	10.1	31.0
FTP6210	10'	51"	71"	17.6	42.0
FTP6212	12'	54"	77-3/4"	22.6	51.0

DIMENSIONS

Top:	5-3/4" x 13"	Steps:	3" wide
Front Rails:	3-1/8" wide	Rear Rail:	1-1/2" square (4' to 8'), 2" square (10' and 12')
Flange:	1-3/16" wide		

6002 MODEL

★★★

250lbs.

LOAD CAPACITY

TYPE I
DUTY RATING

STYLE: Step Stool



©The blue and yellow ladder is an exclusive registered trademark of Werner Co.

SPECIFICATIONS

Model No.	Size	Approx. Width	Approx. Spread	Approx. Cu. Ft. Per Unit	Approx. Shipping Wt. Lbs.
6002	2'	17-1/4"	19-1/2"	1.4	8.5

DIMENSIONS

Top:	5-5/8" x 12-3/8"	Steps:	3" wide
Front Rails:	3-1/8" wide	Rear Rails:	1-3/4" wide
Front Flange:	1-1/8" wide	Rear Flange:	1-3/16" wide back 5/8" wide front

6000 & 6000S SERIES

☆☆☆ **250lbs.** LOAD CAPACITY **TYPE I** DUTY RATING

STYLE: Stepladder



COMPATIBLE
SEE PAGES 57-58

HolsterTop® with Lock-In Accessory System secures tools from falling

Sturdy paint can hanger on back side of top

Braces on top step, second step and top horizontal

External Pinch-Proof™ spreaders

Slip-resistant Traction-Tred® steps

FEATURED PRODUCT

Model 6006

Foot pads riveted to the EDGE®* structure

*Energy Diffusing Geometry

©The blue and yellow ladder is an exclusive registered trademark of Werner Co.



The Lock-In Accessory System lets you customize your ladder top and safely secure your tools.

EDGE® bracing provides enhanced strength and increased protection against damage

SPECIFICATIONS

Model No.	Size	Approx. Width	Approx. Spread	Approx. Cu. Ft. Per Unit	Approx. Shipping Wt. Lbs.	Model No. with Pail Shelf	Approx. Shipping Wt. Lbs.
6004	4'	19"	28-7/8"	2.6	13.0	6004S	15.0
6005	5'	20-1/2"	35"	3.5	16.0	6005S	18.0
6006	6'	22"	41-1/8"	4.5	18.0	6006S	20.0
6008	8'	25"	53-1/2"	6.8	25.5	6008S	27.5

DIMENSIONS

Top:	5-3/4" x 13"	Steps:	3" wide
Front Rails:	3-1/8" wide	Rear Rails:	1-3/4" wide
Front Flange:	1-1/8" wide	Rear Flange:	1-3/16" wide back 5/8" wide front

T6000 SERIES

☆☆☆ **250lbs. PER SIDE** LOAD CAPACITY **TYPE I** DUTY RATING

STYLE: Multi-Use Twin Stepladder††

High performance dual HolsterTop®, paint and tool holder

Back-up aluminum plates reinforce all top connectors

Braces on top steps and bottom three steps

External Pinch-Proof™ spreaders

Slip-resistant Traction-Tred® steps on front and rear sections

Rubber step bumpers to resist damage

Model T6008

EDGE®* molded brace and foot pad combination provides enhanced bracing strength and increased protection against damage

* Energy Diffusing Geometry

- Every rivet backed up by metal plate or washer to protect rails
- ©The blue and yellow ladder is an exclusive registered trademark of Werner Co.

SPECIFICATIONS

Model No.	Size	Approx. Width	Approx. Spread	Approx. Cu. Ft. Per Unit	Approx. Shipping Wt. Lbs.
T6004	4'	19"	36-1/8"	4.5	17.5
T6006	6'	22"	50-1/8"	7.9	24.5
T6008	8'	25"	64-1/8"	11.9	35.0

††Designed for one or two person jobs. Note: When used as a double stepladder, the maximum load per side, including person and materials, shall not exceed the duty rating of ladder.

DIMENSIONS

Top:	8-1/2" x 13"	Steps:	3" wide
Rails:	3-1/8" wide	Flange:	1-1/8" wide



PT6000/PT6000-4C SERIES

★★★ **250lbs.** LOAD CAPACITY **TYPE I**
PER SIDE DUTY RATING

STYLE: Stockr's Ladder®††



- Easy to handle and folds to a 12" width for storage
- Unique combination of one person, platform ladder or two person use††
- External Pinch-Proof™ spreaders on 8' model
- Requires less floor space than heavy steel rolling ladders

SPECIFICATIONS

Model No.	Height (Size) to Platform	Rail Length	Approx. Width	Approx. Spread	Approx. Cu. Ft. Per Unit	Approx. Shipping Wt. Lbs.	Model No. with Casters	Approx. Shipping Wt. Lbs.
PT6002	2'	4'	20"	36-1/2"	6.4	21.0	PT6002-4C	27.0
PT6004	4'	6'	23"	51"	11.1	28.0	PT6004-4C	35.0
PT6006	6'	8'	26"	65-1/2"	16.7	39.0	PT6006-4C	47.0
PT6008	8'	10'	29"	80"	23.4	52.0	PT6008-4C	64.5

†† Designed for one or two person jobs. Note: When used as a double stepladder, the maximum load per side, including person and materials, shall not exceed the duty rating of ladder.

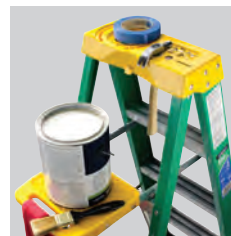
DIMENSIONS

Platform:	12-3/4" x 22"	Steps:	3" wide
Rails:	3-1/8" wide	Flange:	1-1/8" wide

5900 & 5900S SERIES

★★ **225lbs.** LOAD CAPACITY **TYPE II**
DUTY RATING

STYLE: Stepladder



Sturdy pail shelf with rag rack holds gallon paint can (5900S series only)

- * Energy Diffusing Geometry
- Optional yellow molded pail shelf kit, model no. 76-9 or PK76-9 available for 5900 series

SPECIFICATIONS

Model No.	Size	Approx. Width	Approx. Spread	Approx. Cu. Ft. Per Unit	Approx. Shipping Wt. Lbs.	Model No. with Pail Shelf	Approx. Shipping Wt. Lbs.
5904	4'	19"	28-7/8"	2.6	11.5	N/A	N/A
5906	6'	22"	41-1/8"	4.5	16.0	5906S	16.5
5908	8'	25"	53-1/2"	6.8	22.5	5908S	23.0

DIMENSIONS

Top:	5-3/8" x 13"	Steps:	3" wide
Front Rails:	3-1/8" wide	Rear Rails:	1-3/4" wide
Front Flange:	1-1/8" wide	Rear Flange:	1-3/16" wide

FIBERGLASS STEPLADDER COMPARISON CHART

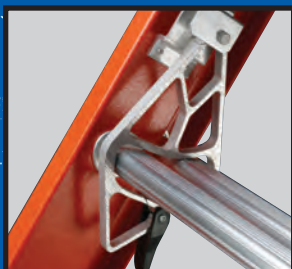


Features and Benefits	7400 SERIES	T7400 SERIES	P7400 SERIES	7300 SERIES	6200 SERIES	T6200 SERIES	P6200 SERIES	6100 SERIES	6000 SERIES	T6000 SERIES	5900 SERIES
	TYPE IAA	TYPE IAA/IA	TYPE IAA/IA	TYPE IAA	TYPE IA	TYPE IA	TYPE IA	TYPE IA	TYPE I	TYPE I	TYPE II
Slip-resistant Traction-Tred® steps	★	★	★	★	★	★	★	★	★	★	★
Slip-resistant foot pad	★	★	★	★	★	★	★	★	★	★	★
Aluminum drill HolsterTop®	★			★							
HolsterTop®						★				★	★
Aluminum top		★									
HolsterTop® featuring Lock-In Accessory System					★			★	★		
Designed for one or two person jobs		★				★				★	
Slip-resistant Traction-Tred® steps all knee braced	★	★	★	★	★	★	★				
Molded braces	★	★	★	★	★	★	★		★	★	★
Rail shields	★	★	★	★							
Internal spreaders	★	★		★	★	★		★			
External spreaders									★	★	★
Full set of rear horizontals	★		★	★	★		★	★			
Platform for comfortable work area			★				★				
Shoulder bolt and nut on top hinge	★	★	★	★	★	★	★			★	
Back-up plates to reinforce top connectors	★	★	★	★	★	★	★	★	★	★	★
Every rivet backed up by metal plate or washer to protect fiberglass	★	★	★	★	★	★	★	★	★	★	★
4 rivets attach top to each front rail	★	★	★	★	★	★	★	★			

WERNER QUALITY FROM TOP TO BOTTOM



Slip-resistant Traction-Tred® rungs provide comfortable working surface



Spring loaded locks operate smoothly and are hassle-free



Exclusive Alflo® rung joint means Twist-Proof® performance to keep you safe in the air



Rope and pulley system designed to easily extend ladder



Dual action foot for use on hard or penetrable surfaces



D7100-2LV SERIES

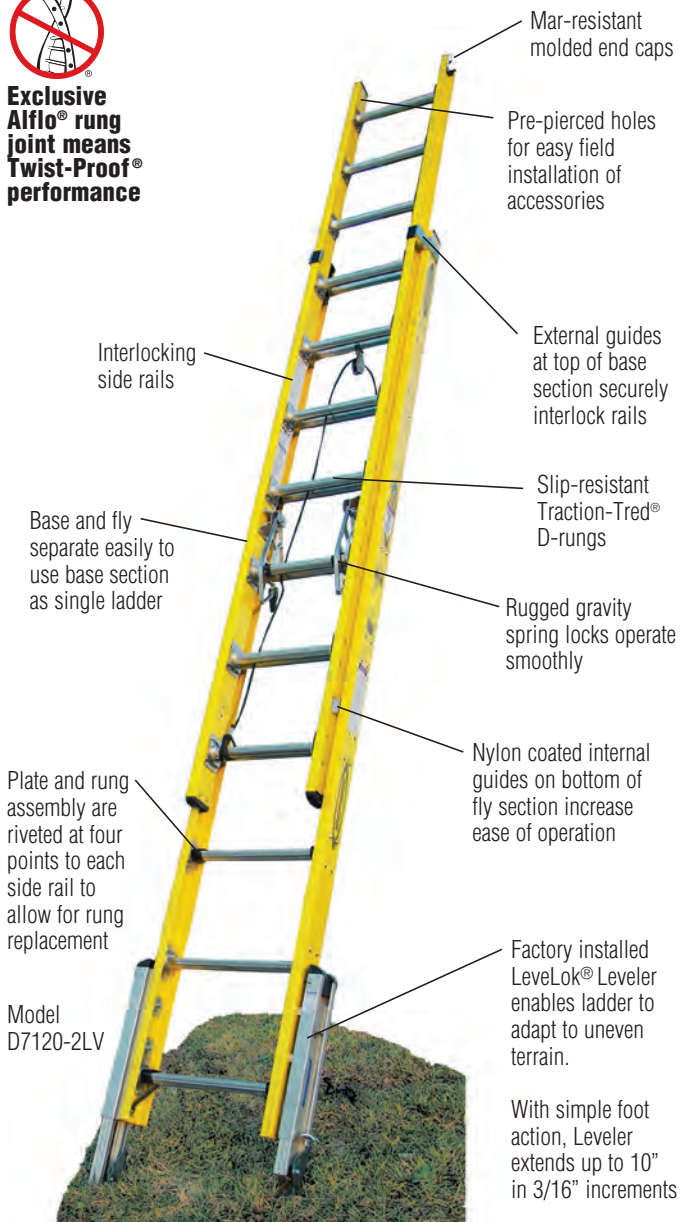
★★★★★ **375lbs.** LOAD CAPACITY

TYPE IAA DUTY RATING

STYLE: D-Rung Extension Ladder with Integrated Leveling



Exclusive Alflo® rung joint means Twist-Proof® performance



Mar-resistant molded end caps

Pre-pierced holes for easy field installation of accessories

External guides at top of base section securely interlock rails

Interlocking side rails

Slip-resistant Traction-Tred® D-rungs

Base and fly separate easily to use base section as single ladder

Rugged gravity spring locks operate smoothly

Nylon coated internal guides on bottom of fly section increase ease of operation

Plate and rung assembly are riveted at four points to each side rail to allow for rung replacement

Factory installed Levelok® Leveler enables ladder to adapt to uneven terrain.

Model D7120-2LV

With simple foot action, Leveler extends up to 10" in 3/16" increments

- Ideal for utility and telecommunication industries

Levelok® is a registered trademark of the Levelok Corporation.

SPECIFICATIONS NOTE: Type IAA duty rating is for extension ladders up to 32 feet

Model No.	Total Length of Sections	Max. Working Length	Approx. Cu. Ft. Per Unit	Approx. Shipping Wt. Lbs.
D7120-2LV	20'	17'	8.6	58.0
D7124-2LV	24'	21'	10.3	66.5
D7128-2LV	28'	25'	12.0	75.0
D7132-2LV	32'	29'	13.7	90.5

★★★★★ **300lbs.** LOAD CAPACITY

TYPE IA DUTY RATING

D7136-2LV	36'	32'	20.2	121.0
D7140-2LV	40'	35'	22.5	134.5

DIMENSIONS

	Rails:	Flange:	Rungs:	Fly Width:	Base Width:
20' to 32'	3-5/16"	1-3/16"	1-5/8"	16-1/8" outside rails	19" outside rails, 22-3/4" outside shoes
36' & 40'	4"	1-3/4"	1-3/4"	16-3/4" outside rails	22" outside rails, 25-3/4" outside shoes

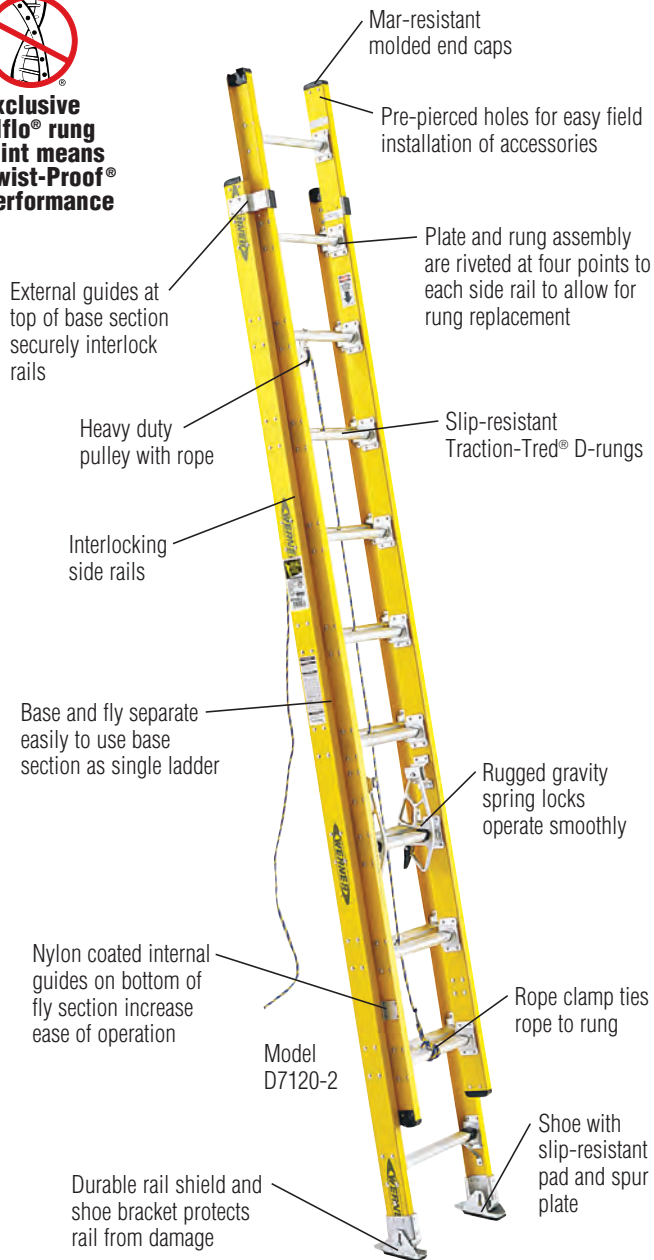
D7100-2SERIES

★★★★★ **375lbs.** LOAD CAPACITY TYPE IAA DUTY RATING

STYLE: D-Rung Extension Ladder



Exclusive Alflo® rung joint means Twist-Proof® performance



Model D7120-2

SPECIFICATIONS

NOTE: Type IAA duty rating is for extension ladders up to 32 feet

Model No.	Total Length of Sections	Max. Working Length	Approx. Cu. Ft. Per Unit	Approx. Shipping Wt. Lbs.
D7116-2‡	16'	13'	7.0	41.0
D7120-2	20'	17'	8.7	50.0
D7124-2	24'	21'	10.3	58.5
D7128-2	28'	25'	12.0	67.0
D7132-2	32'	29'	13.7	82.5

★★★★★ **300lbs.** LOAD CAPACITY TYPE IA DUTY RATING

D7136-2	36'	32'	23.8	113.0
D7140-2	40'	35'	26.7	126.5

‡ Note: D7116-2CA is not equipped with rope and pulley

DIMENSIONS

	Rails:	Flange:	Rungs:	Fly Width:	Base Width:
16' to 32'	3-5/16"	1-3/16"	1-5/8"	16-1/8" outside rails	19" outside shoes
36' and 40'	4"	1-3/4"	1-3/4"	16-3/4" outside rails	22" outside shoes

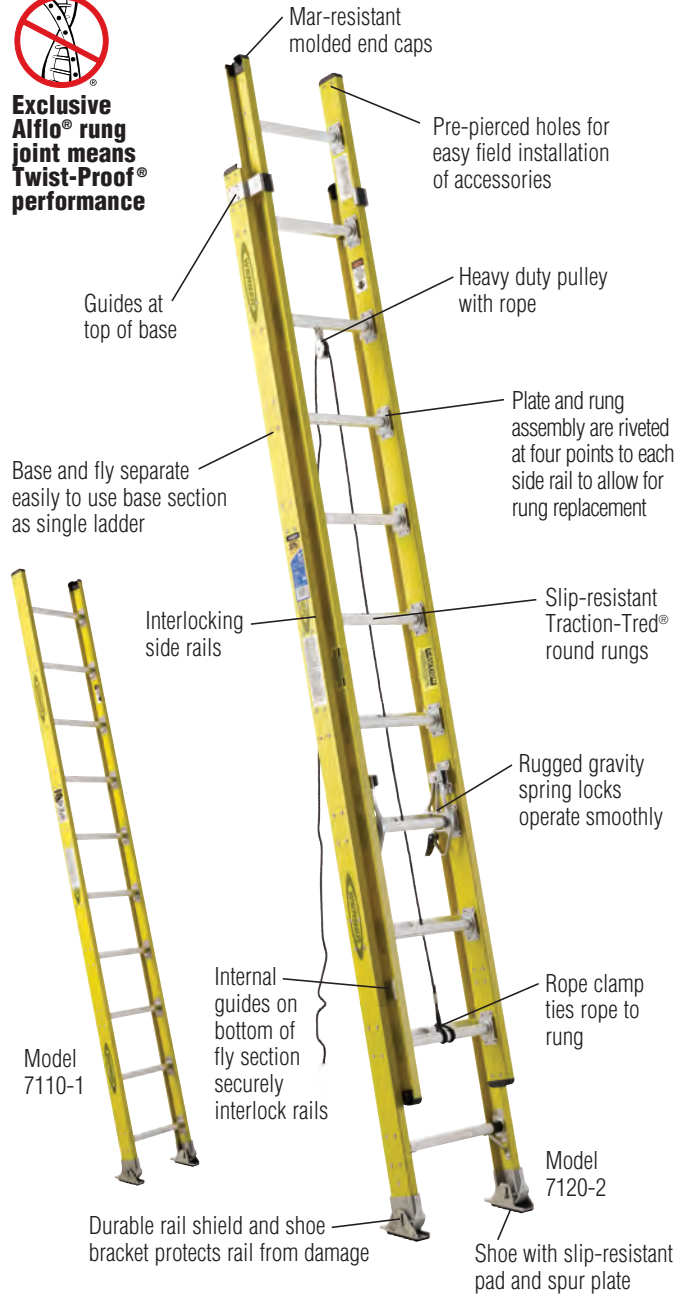
7100-2/7100-1SERIES

★★★★★ **375lbs.** LOAD CAPACITY TYPE IAA DUTY RATING

STYLE: Round Rung Extension/Straight Ladder



Exclusive Alflo® rung joint means Twist-Proof® performance



Model 7110-1

Model 7120-2

SPECIFICATIONS

Model No.	Total Length of Sections	Max. Working Length	Approx. Cu. Ft. Per Unit	Approx. Shipping Wt. Lbs.	Straight Ladder Model No.	Total Length	Approx. Cu. Ft. Per Unit	Approx. Shipping Wt. Lbs.
7116-2‡	16'	13'	7.0	38.5	7108-1	8'	4.5	20.0
7120-2	20'	17'	8.7	47.0	7110-1	10'	5.5	24.0
7124-2	24'	21'	10.3	55.0	7112-1	12'	6.5	28.0
7128-2	28'	25'	12.0	63.0	7114-1	14'	7.6	32.0
7132-2	32'	29'	13.7	78.0	7116-1	16'	8.6	40.0
--	--	--	--	--	7118-1	18'	12.5	52.0
--	--	--	--	--	7120-1	20'	13.9	58.0

‡ Note: 7116-2 is not equipped with rope and pulley

DIMENSIONS

	Rails:	Flange:	Rungs:	Width (outside rails):	Width (outside shoes):
7100-2: ALL	3-5/16"	1-3/16"	1-1/4"	17-3/4" outside rails	19" outside shoes
7100-1: 8' to 16'	4"	1-3/4"	1-1/4"	16-13/16" outside rails	18-1/16" outside shoes



D8200-2EQ SERIES

★★★★ **300lbs.** LOAD CAPACITY **TYPE IA** DUTY RATING

STYLE: Extension Ladder with Integrated Leveling



Exclusive Alflo® rung joint means Twist-Proof® performance

Mar-resistant molded end caps

THE Equalizer®
ELIMINATES UNEVEN GROUND

Heavy duty pulley with rope

Direct rung to rail connections

Slip-resistant Traction-Tred® D-rungs

Rugged gravity spring locks operate smoothly

FEATURED PRODUCT

Model D8224-2EQ



Factory installed adjustable EverLevel® leveling system exceeds OSHA and ANSI requirements



Precisely adjusts in 3/8" increments up to 8-1/4", making it easy to use



Dual action feet for use on hard or penetrable surfaces

D6200-2/D6200-1 SERIES

★★★★ **300lbs.** LOAD CAPACITY **TYPE IA** DUTY RATING

STYLE: D-Rung Extension/Straight Ladder



Exclusive Alflo® rung joint means Twist-Proof® performance

Mar-resistant molded end caps

External guides at top of base section securely interlock rails. Two sets on 36' and 40' models

Interlocking side rails

Base and fly separate easily to use base section as single ladder

Internal guides on bottom of fly section securely interlock rails

Durable rail shield bracket and shoe with Shu-Lok®, slip-resistant pad and spur plate

Pre-pierced holes for easy field installation of accessories

Direct rung to rail connections

Heavy duty pulley with rope

Slip-resistant Traction-Tred® D-rungs

Rugged gravity spring locks operate smoothly

Rope clamp ties rope to rung

Molded rung braces

Model D6220-2

©The blue and yellow ladder is an exclusive registered trademark of Werner Co.

SPECIFICATIONS

Model No.	Total Length of Sections	Max. Working Length	Approx. Cu. Ft. Per Unit	Approx. Shipping Wt. Lbs.
D8220-2EQ	20'	17'	10.0	54.0
D8224-2EQ	24'	21'	11.9	62.0
D8228-2EQ	28'	25'	13.8	70.0

DIMENSIONS

Rails:	3-5/16" wide	Fly Width:	16" outside rails
Flange:	1-3/16" wide	Base Width:	17-3/4" outside rails, 21-7/16" outside of feet
Rungs:	1-5/8"		

SPECIFICATIONS

Model No.	Total Length of Sections	Max. Working Length	Approx. Cu. Ft. Per Unit	Approx. Shipping Wt. Lbs.	Single Ladder Model No.	Total Length	Approx. Cu. Ft. Per Unit	Approx. Shipping Wt. Lbs.
D6216-2†	16'	13'	7.0	36.5	D6208-1	8'	4.7	19.5
D6220-2	20'	17'	8.7	44.5	D6210-1	10'	5.8	23.0
D6224-2	24'	21'	10.3	52.0	D6212-1	12'	6.9	27.0
D6228-2	28'	25'	12.0	59.5	D6214-1	14'	8.0	31.0
D6232-2	32'	29'	13.7	71.5	D6216-1	16'	9.1	37.0
D6236-2	36'	32'	15.3	80.5	--	--	--	--
D6240-2	40'	35'	17.0	88.5	D6220-1	20'	11.5	45.5

† Note: D6216-2 is not equipped with rope and pulley

DIMENSIONS

Rails:	3-5/16" wide	Fly Width:	16" outside rails
Flange:	1-3/16" wide	Base Width:	19" outside shoes
Rungs:	1-5/8"		