

Pipe Identification Guide

magtool.com

ASME (ANSI) Standard A13.1-2007

The ASME (ANSI) Standard for pipe identification is a widely used guideline in determining pipe identification requirements. The purpose of the standard is to:

- “assist in identification of hazardous materials conveyed in piping systems and their hazards when released into the environment.”
- “Pipes are defined as conduits for the transport of gases, liquids, semi-liquids or fine particulate dust.”



Text Standards:

ASME (ANSI) Size Recommendations

The legend (name of pipe content) and directional flow arrow is the primary means of identifying pipe content. A13.1-2007 standard makes recommendations as to the size of letter height and length of color field for various pipe diameters.

Outside Diameter of Pipe or Covering	Length of Color Field	Size of Letters
3/4" to 1-1/4"	5"	1/2"
1-1/2" to 2"	8"	3/4"
2-1/2" to 6"	12"	1-1/4"
8" to 10"	24"	2-1/2"
Over 10"	32"	3-1/2"

* For pipes less than 3/4" dia. use a permanently legible tag.

Color Standards:

ASME (ANSI) Color Recommendations

Unmarked pipes mean danger – to both life and property. Numerous injuries have occurred through ignorance of pipe contents, particularly when outside agencies are called in under emergency conditions.

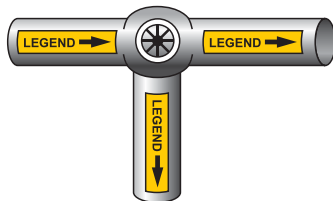
Pipe Classification	Color Scheme
Fire Quenching Fluids	White On Red
Toxic & Corrosive Fluids	Black On Orange
Flammable Fluids	Black On Yellow
Combustible Fluids	White On Brown
Potable, Cooling, Boiler Feed, and Other Water	White On Green
Compressed Air	White On Blue

*White on brown available upon request.

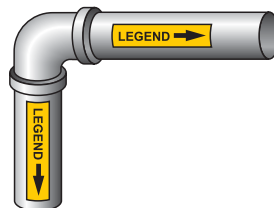
Marker Placement Standards:

ASME (ANSI) A13.1-2007 Standard

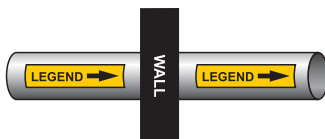
Visibility “Markers shall be located so that they are readily visible to plant personnel from the point of normal approach.” Brady Pipe Markers instantly tell you all you need to know about pipe contents, direction of flow and whether hazardous or safe.



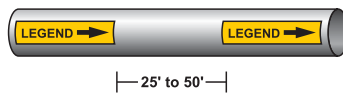
Adjacent to all valves and flanges.



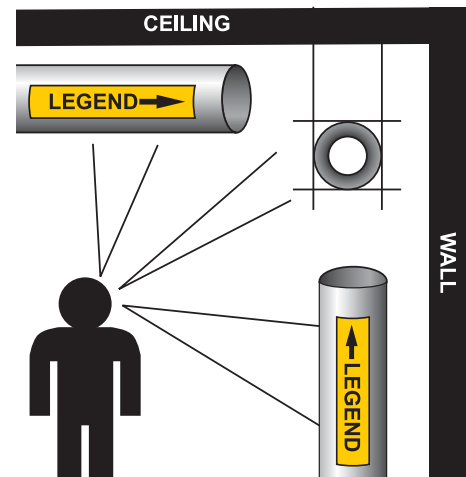
Adjacent to changes in direction.



At both sides of floor or wall penetrations.



Every 25' to 50' intervals on straight runs.



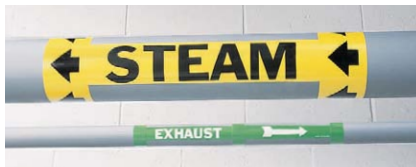
Placement of the marker may be above or below the centerline of the pipe depending on the normal approach of personnel.

Pipe Marker Material Descriptions

Characteristic	HARSH ENVIRONMENT Mechanically Applied		General Purpose		
	B-689 Wrap-Around Polyester	B-681/B-883 High Performance High Visibility	B-915 BradySnap-On™ and Strap-On Vinyl	B-946 Self-Sticking Vinyl	B-736 Self-Sticking Plastic Film
Plant Environment					
Indoor	Good	Good	Good	Good	Good
Avg. Outdoor Durability (yrs.)	5-8 years	5-8 years	5-8 years	3-5 years	2-3 years
Surface Abrasion Resistance	Good	Good	Not Recommended	Not Recommended	Not Recommended
Temperatures					
Min. Installation Temperature	40°F, 5°C	—	—	0°F, -18°C	50°F, 10°C
Upper Temperature Limit	248°F, 120°C	230°F, 110°C	180°F, 82°C	180°F, 82°C	212°F, 100°C
Lower Temperature Limit	-40°F, -40°C	-40°F, -40°C	-40°F, -40°C	-40°F, -40°C	-40°F, -40°C
Pipe Surface					
Dirty, Dusty	Good	Good	Good	Not Recommended	Not Recommended
Rough	Good	Good	Good	Good	Not Recommended
Insulated	Good	Good	Good	Good	Good
Wet	Good	Good	Good	Not Recommended	Not Recommended
Greasy, Oily	Good	Good	Good	Not Recommended	Not Recommended
Chemical Resistance					
Organic Solvents (MEK, Acetone, Toluene)	Not Recommended	Not Recommended	Not Recommended	Not Recommended	Not Recommended
Acids (Sulfuric, HCL, Acetic)	Good	Good	Not Recommended	Not Recommended	Good
Alkalis (Sodium Hydroxide)	Good	Good	Not Recommended	Not Recommended	Not Recommended
Alcohols (Methanol, Isopropanol)	Good	Good	Good	Good	Good
Grease/Oils (SAE 20, ASTM #3)	Good	Good	Good	Good	Good
Special Properties					
Low PVC - Pipe contact point	Yes	Yes	No	No	No
Low PVC - Whole marker	No	Yes	No	No	No
Low Halogen - Pipe contact point	Yes	Yes	No	No	No
Low Halogen - Whole marker	No	Yes	No	No	No
Meets ASME (ANSI) A13.1	Yes	Yes	Yes	Yes	Yes

Not Recommended = marker not recommended for environment listed Good = marker suitable for environment listed

Self-Sticking Pipe Markers



Self-Sticking Vinyl Pipe Markers

Factory applied industrial grade adhesives simplify marker installation. Simply peel the release coated paper backing from the marker and press the marker in place. Banding each end of the marker with Arrow Tape is recommended to indicate contents flow direction and to secure markers to the pipe.

- **B-946 Self-Sticking Vinyl**
A premium indoor/outdoor material
- **B-681 Food & Beverage**
Industrial grade self-adhesive protects against bacteria or moisture trapping behind the pipe marker.
- **B-736 Pipe Markers-To-Go**
Economical B-736 material with surface printed plastic for use on smooth, clean, dry pipe surfaces

Mechanically Applied Pipe Markers



BradySnap-On™ and Strap-On Vinyl

Unlike installing self-sticking markers, there's no need to clean pipe surfaces. Installation time is reduced. Markers are simply snapped, strapped or wrapped in place.

- **B-915 BradySnap-On™ and Strap-On Vinyl**
A mechanically applied, surface printed vinyl pipe marker. Snap-ons are used for pipes less than 6" outside diameter. Strap-ons are designed for pipes from 6" and greater



High Performance Pipe Markers

Brady High Performance Markers are designed for use in harsh environments where there's significant exposure to sunlight, heat, and/or chemicals.

- **B-689 High Performance Polyester**
PVF overlaminated polyester with sealed-in graphics. Markers are resistant to abrasion, chemicals, high humidity, and outdoor weathering. Supplied precociled for easy wrap-around installation on pipes up to 7-7/8" in diameter
- **B-681/B-883 High Performance High Visibility**
B-681 labels are factory applied to our B-883 FRP carrier. Directional arrows are applied by the installer. Markers are fastened to the pipe with Stainless Steel Strapping, sold separately



IIAR Pipe Markers

magtool.com



Did You Know? IIAR Pipe Markers - Ammonia Refrigeration Pipe Markers

The International Institute of Ammonia Refrigeration (IIAR) standardized ammonia pipe labeling when it published its bulletin #114, "Guidelines for Identification of Ammonia Refrigeration Piping and System Components."

Brady offers a variety of ammonia pipe markers that comply with the IIAR's established guidelines, including self-adhesive markers, snap-around marker styles, and pipe markers recommended for harsh environments (both indoors and outside).

IIAR Pipe Marker should have the following sections:



Directional Arrows
Use arrow tape to indicate flow direction

Ammonia Piping Abbreviation
*See below

Physical State
the physical state of the refrigerant located to the left of "Ammonia":

If Liquid – "LIQ"
black or white on orange background

If Vapor – "VAP"
black or white on sky blue background

If Both – "LIQ" "VAP"
both printed in colors above

Marker Body
"Ammonia" - black letters on yellow background

Pressure Level
the pressure level of the refrigerant located to the right of "Ammonia":

If High – "HIGH"
black or white on red background

If Low – "LOW"
black or white on green background

If Both – "LIQ" "VAP"
both printed in colors above

Directional Arrows
Use arrow tape to indicate flow direction

Ammonia Piping Abbreviations:

Abbr.	System
BD	Booster Discharge
CD	Condenser
DC	Defrost Condensate
EQ*	Equalizer
ES	Economizer Suction
HGD	Hot Gas Defrost
HPL	High Pressure Liquid
HSD	High Stage Discharge
HSS	High Stage Suction
HTS*	High Temperature Suction
HTRL	High Temperature Recirculated Liquid
HTRS	High Temperature Recirculated Suction
LTRL	Low Temperature Recirculated Liquid
LTS*	Low Temperature Suction
LTRS	Low Temperature Recirculated Suction
LIC	Liquid Injection Cooling
LSS	Low Stage Suction
PO*	Pump Out
PU*	Purge
RV	Relief Vent
TSR	Thermosyphon Return
TSS	Thermosyphon Supply

*Not currently covered in the IIAR standard





IIAR Pipe Markers

- Meets IIAR Standard and is recommended for use in labeling ammonia piping and its contents
- Choose the material that best meets your application requirements: High Performance Polyester or Indoor/Outdoor Self-Sticking Vinyl
- Create custom IIAR Pipe Markers on the spot utilizing the GlobalMark™ Industrial Labeling System (sold separately)



Example of B-689 High Performance Pipe Markers



Example of B-681/B883 HPHV Pipe Markers



Example of B-946 Self-Sticking Vinyl Pipe Markers

IIAR B-689 High Performance Wrap-Around Pipe Markers Style and Size Chart

Style Code	Outside Dia.	Letter Height	Max Char.
Style: I	1-1/2" to 2-3/8"	3/4"	13
Style: II	2-1/2" to 7-7/8"	1-1/4"	13

IIAR B-681/B883 HPHV Pipe Markers Style and Size Chart

Style Code	Outside Dia.	Letter Height	Max Char.
Style: HPHV	8" or larger	3-1/2"	16

B-946 Self-Sticking Vinyl Pipe Markers Style and Size Chart

Style Code	Outside Diameter	Letter Height	Style Description	Style Example
Style: 1	2-1/2" to 7-7/8"	2"	One 2-1/4" x 14" marker per card	
Style: 1HV	8" or greater	3-1/2"	One 4" x 24" marker per card	
Style: 3C	less than 34"	1/2"	Three 2-1/4" x 2-3/4" markers per card plus 8 strips of Arrow Tape	
Style: 4	34" to 2-38"	34"	Four 1-1/8" x 7" markers per card	

IIAR Pipe Markers

IIAR Abbr.	Physical State	Pressure Level	Legend	B-689 Wrap-Around		B-681/B-883	B-946 Self-Sticking Vinyl		
				Style I	Style II	Style HPHV	Style 1HV	Style 1	Style 4
BD	VAP	LOW	Ammonia	57960	57980	59919	90440	90400	90420
CD	LIQ	HIGH	Ammonia	57961	57981	59920	90441	90401	90421
DC	LIQ	HIGH	Ammonia	57962	57982	59921	90442	90402	90422
ES	VAP	LOW	Ammonia	57963	57983	59922	90443	90403	90423
EQ	LIQ/VAP	LOW	Ammonia	58014	58017	59982	90486	90484	90485
HG	VAP	HIGH	Ammonia	57964	57984	59923	90444	90404	90424
HGD	VAP	HIGH	Ammonia	57965	57985	59924	90445	90405	90425
HPL	LIQ	HIGH	Ammonia	57966	57986	59925	90446	90406	90426
HSD	VAP	HIGH	Ammonia	57967	57987	59926	90447	90407	90427
HSS	VAP	LOW	Ammonia	57968	57988	59927	90448	90408	90428
HTRL	LIQ	LOW	Ammonia	57969	57989	59928	90449	90409	90429
HTRS	LIQ/VAP	LOW	Ammonia	57970	57990	59929	90450	90410	90430
HTS	VAP	LOW	Ammonia	57971	57991	59930	90451	90411	90431
LIC	LIQ	HIGH	Ammonia	57972	57992	59931	90452	90412	90432
LSS	VAP	LOW	Ammonia	57973	57993	59932	90453	90413	90433
LTRL	LIQ	LOW	Ammonia	57974	57994	59933	90454	90414	90434
LTRS	LIQ/VAP	LOW	Ammonia	57975	57995	59934	90455	90415	90435
LTS	VAP	LOW	Ammonia	57976	57996	59935	90456	90416	90436
PO	LIQ	LOW	Ammonia	58012	58015	59980	90480	90478	90479
PU	LIQ	HIGH	Ammonia	58013	58016	59981	90483	90481	90482
RV	VAP	HIGH	Ammonia	57977	57997	59936	90457	90417	90437
TSR	LIQ/VAP	HIGH	Ammonia	57978	57998	59937	90458	90418	90438
TSS	LIQ	HIGH	Ammonia	57979	57999	59938	90459	90419	90439
BLANK	LIQ	HIGH	Ammonia	58000	58006	59939	90462	90460	90461
BLANK	VAP	HIGH	Ammonia	58001	58007	59940	90468	90466	90467
BLANK	LIQ/VAP	HIGH	Ammonia	58002	58008	59941	90474	90472	90473
BLANK	LIQ	LOW	Ammonia	58003	58009	59942	90465	90463	90464
BLANK	VAP	LOW	Ammonia	58004	58010	59943	90471	90469	90470
BLANK	LIQ/VAP	LOW	Ammonia	58005	58011	59944	90477	90475	90476



Self-Sticking Pipe Markers

magtool.com



Self-Sticking Vinyl Pipe Markers (B-946)

- Markers meet the requirements of the ASME (ANSI) A13.1 Standard for the identification of piping system contents when used with Directional Flow Arrow Tape
- Durable B-946 material ideal for indoor and outdoor environments
- Supplied on a coated backing material that makes handling and installation easy
- Recommended to use Directional Flow Arrow Tape to indicate flow direction

How to order:

1. Choose the desired pipe marker legend below.
2. Replace the asterisk (*) with the style code from the chart on the right (1, 1HV, 3C or 4) to indicate your desired pipe marker size and style. (Example: Air = 7005-3C)

Style and Size Chart

Style Code	Outside Diameter	Letter Height	Style Description	Style Example
Style: 1	2-1/2" to 7-7/8"	2"	One 2-1/4" x 14" marker per card	HEATING RETURN
Style: 1HV	8" or greater	3-1/2"	One 4" x 24" marker per card	HEATING RETURN
Style: 3C	less than 34"	1/2"	Three 2-1/4" x 2-3/4" markers per card plus 8 strips of Arrow Tape	
Style: 4	34" to 2-38"	3/4"	Four 1-1/8" x 7" markers per card	FIRE AUTO SPRINKLERS FIRE AUTO SPRINKLERS

Self-Sticking Pipe Marker Legends

Catalog Number	Legend	Bkgd Color
7021-*	(Blank)	Blue
7022-*	(Blank)	Green
7023-*	(Blank)	Orange
7024-*	(Blank)	Red
7025-*	(Blank)	Yellow
7026-*	(Blank)	White
7307-*	____ °C	Yellow
7308-*	____ °F	Yellow
7309-*	____ LB. STEAM	Yellow
7310-*	____ PSI	Yellow
7000-*	Acetone	Yellow
7001-*	Acetylene Gas	Yellow
7002-*	Acid	Yellow
7003-*	Acid Vent	Yellow
7004-*	Acid Waste	Yellow
7005-*	Air	Yellow
7006-*	Air	Blue
7007-*	Air	Green
7008-*	Air Return	Blue
7009-*	Air Return	White
7010-*	Air Supply	Blue
7011-*	Air Supply	White
7012-*	Alcohol	Yellow
7013-*	Alum	Yellow
7014-*	Ammonia	Yellow
7015-*	Argon	Green
7016-*	Argon	Blue
7017-*	Asbestos Free	Blue
7018-*	Asbestos Free Insulation	Blue
7019-*	Asbestos Insulation	Yellow
7020-*	Backwash	Green
8782-*	Black Liquor	Yellow
8783-*	Bleach Liquor	Yellow
7027-*	Blow Off Water	Yellow
7028-*	Blowdown	Yellow
7029-*	Blower Air	Green
7030-*	Boiler Blow Down	Yellow
7031-*	Boiler Feed	Yellow
7032-*	Boiler Feed	Green
7033-*	Boiler Feed Water	Yellow
7034-*	Boiler Water	Green
7035-*	Breathing Air	Green
7036-*	Brine	Green
7038-*	Carbon Dioxide	Yellow
7039-*	Carbon Dioxide	Red
7040-*	Caustic	Yellow
7041-*	Caustic Soda	Yellow
7042-*	Chemical	Yellow
7043-*	Chemical Feed	Yellow
7044-*	Chilled Hot Water	Green

Catalog Number	Legend	Bkgd Color
7045-*	Chilled Water	Green
7046-*	Chilled Water Return	Green
7047-*	Chilled Water Supply	Green
7048-*	Chlorine	Yellow
7049-*	Chlorine Gas	Yellow
7050-*	Chlorine Solution	Yellow
7051-*	Circulating Water	Green
7052-*	Circulating Water	Yellow
7053-*	City Gas	Yellow
7054-*	City Water	Green
7055-*	Cold Water	Green
7056-*	Cold Water Return	Green
7057-*	Cold Water Supply	Green
7058-*	Compressed Air	Yellow
7059-*	Compressed Air	Green
7060-*	Compressed Air	Blue
7061-*	Condensate	Yellow
7062-*	Condensate Drain	Yellow
7063-*	Condensate Drain	Green
7064-*	Condensate Pump Discharge	Yellow
7065-*	Condensate Return	Yellow
7066-*	Condensate Supply	Yellow
7067-*	Condenser Water	Green
7068-*	Condenser Water Return	Green
7069-*	Condenser Water Supply	Green
7070-*	Cooling Water	Green
7071-*	Cooling Water Return	Green
7072-*	Cooling Water Supply	Green
8784-*	Crude Oil	Yellow
7073-*	Deionized Water	Green
7074-*	Deionized Water Return	Green
7075-*	Deionized Water Supply	Green
7076-*	Digested Sludge	Yellow
7077-*	Digester Gas	Yellow
7078-*	Diesel Oil	Yellow
7079-*	Discharge	Yellow
7080-*	Discharge	Green
7081-*	Distilled Water	Green
7082-*	Domestic	Yellow
7083-*	Domestic	Green
7084-*	Domestic Cold Water	Green
7085-*	Domestic Cold Water Return	Green
7086-*	Domestic Cold Water Supply	Green
7087-*	Domestic Hot Water	Yellow
7088-*	Domestic Hot Water Return	Yellow
7089-*	Domestic Hot Water Supply	Yellow
7090-*	Drain	Green
7091-*	Drain	Yellow
7092-*	Drain Water	Green
7093-*	Drinking Water	Green
7094-*	Dual Temperature	Yellow

Catalog Number	Legend	Bkgd Color
8785-*	Dye	Yellow
7095-*	Effluent	Yellow
7096-*	Electric Traced	Yellow
7097-*	Electric Traced	Orange
8786-*	Engine Oil	Yellow
7098-*	Exhaust	Yellow
7099-*	Exhaust	Green
7100-*	Exhaust Air	Blue
7101-*	Exhaust Air	White
7102-*	Exhaust Intake	Blue
7103-*	Feed	Yellow
7104-*	Feed	Green
7105-*	Filtered Water	Green
7106-*	Filtrate	Yellow
7107-*	Fire Auto Sprinklers	Red
7108-*	Fire Dry Standpipe	Red
7109-*	Fire Main	Red
7110-*	Fire Protection Water	Red
7111-*	Floor Drain	Green
7112-*	Freon	Green
7113-*	Fresh Water	Green
7114-*	Fuel Gas	Yellow
7115-*	Fuel Oil	Yellow
7116-*	Fuel Oil Return	Yellow
7117-*	Fuel Oil Supply	Yellow
7118-*	Fuel Oil Vent	Yellow
7119-*	Gas	Yellow
7120-*	Gasoline	Yellow
7121-*	Glycol	Yellow
7122-*	Glycol Return	Yellow
7123-*	Glycol Supply	Yellow
8787-*	Green Liquor	Yellow
8788-*	Halon	Red
7124-*	Heating	Yellow
7125-*	Heating Return	Yellow
7126-*	Heating Steam	Yellow
7127-*	Heating Supply	Yellow
7128-*	Heating Water	Yellow
7129-*	Heating Water Return	Yellow
7130-*	Heating Water Supply	Yellow
7132-*	Helium	Green
7133-*	Helium	Blue
7134-*	High Pressure	Yellow
7135-*	High Pressure Air	Yellow
7136-*	High Pressure Air	Green
7137-*	High Pressure Condensate	Yellow
7138-*	High Pressure Gas	Yellow
7139-*	High Pressure Natural Gas	Yellow
7140-*	High Pressure Nitrogen	Yellow
7141-*	High Pressure Steam	Yellow
7142-*	High Pressure Water	Yellow

Self-Sticking Pipe Markers

magtool.com

Pipe Markers

Catalog Number	Legend	Bkgd Color
7143*	High Temperature Hot Water	Yellow
7144*	Hot	Yellow
7145*	Hot Gas	Yellow
7146*	Hot Water	Yellow
7147*	Hot Water Recirculation	Yellow
7148*	Hot Water Return	Yellow
7149*	Hot Water Supply	Yellow
7150*	House Vacuum	Green
7151*	Hvac Return	Yellow
7152*	Hvac Supply	Yellow
8789*	Hydraulic Fluid	Yellow
7153*	Hydraulic Line	Yellow
8790*	Hydraulic Oil	Yellow
7154*	Hydraulic Return	Yellow
7155*	Hydraulic Supply	Yellow
7156*	Hydrochloric Acid	Yellow
7157*	Hydrogen	Yellow
7158*	Hydrogen Peroxide	Yellow
7159*	Hydrogen Sulfide	Yellow
7160*	Industrial Cold Water Return	Green
7161*	Industrial Hot Water	Yellow
7162*	Industrial Waste	Yellow
7163*	Industrial Water	Green
7164*	Inert Gas	Green
8791*	Inert Gas	Yellow
7165*	Inlet	Yellow
7166*	Instrument Air	Yellow
7167*	Instrument Air	Green
7168*	Instrument Air	Blue
7169*	Kerosene	Yellow
7170*	Lab Compressed Air	Blue
7171*	Lab Vacuum	Yellow
8792*	Lab Vent	Yellow
8793*	Lab Waste	Yellow
7172*	Liquid Nitrogen	Yellow
7173*	Low Pressure	Green
7174*	Low Pressure Air	Green
7175*	Low Pressure Condensate	Yellow
7176*	Low Pressure Gas	Yellow
7177*	Low Pressure Natural Gas	Yellow
7178*	Low Pressure Nitrogen	Yellow
7179*	Low Pressure Steam	Yellow
7180*	Low Pressure Water	Green
7181*	Lube Oil	Yellow
7182*	Make-Up Water	Green
7184*	Medical Air	Yellow
7186*	Medical Vacuum	White
7187*	Medium Pressure Air	Blue
7188*	Medium Pressure Condensate	Yellow
7189*	Medium Pressure Gas	Yellow
7190*	Medium Pressure Natural Gas	Yellow
7191*	Medium Pressure Steam	Yellow
7192*	Mill Air	Blue
7193*	Mill Water	Green
7194*	Mixed Gas	Yellow
7195*	Muriatic Acid	Yellow
8795*	Naphtha	Yellow
7196*	Natural Gas	Yellow
7197*	Nitric Acid	Yellow
7198*	Nitrogen	Green
7200*	Nitrogen	Blue

Catalog Number	Legend	Bkgd Color
7202*	Nitrous Oxide	Yellow
7203*	Non-Potable Water	Yellow
7204*	Oil	Yellow
7205*	Outlet	Green
7206*	Outside Air	Blue
7207*	Outside Air	White
7208*	Overflow	Yellow
7210*	Oxygen	Green
7209*	Oxygen	Yellow
7211*	Oxygen	Blue
8796*	Peroxide	Yellow
7212*	Plant Air	Yellow
7213*	Plant Water	Green
7214*	Plumbing Vent	Green
7215*	Polymer	Yellow
7216*	Polymer	White
7217*	Potable	Green
7218*	Potable Water	Yellow
7219*	Potable Water	Green
7220*	Primary	Yellow
7221*	Primary	Green
7222*	Primary Sludge	Brown
7223*	Process	Yellow
7224*	Process Water	Green
7225*	Processed Water	Yellow
7226*	Processed Water	Green
7227*	Propane Gas	Yellow
8797*	Pulp	Yellow
7228*	Pump	Yellow
8799*	Pumped Condensate	Yellow
7229*	Rain Water	Green
7230*	Raw Water	Green
7231*	Raw Water	Yellow
7232*	Recirculated	Yellow
7233*	Recovery	Yellow
8801*	Red Liquor	Yellow
7234*	Refrigerant Discharge	Yellow
7235*	Refrigerant Liquid	Yellow
7236*	Refrigerant Suction	Yellow
7237*	Refrigerated Water	Green
7238*	Refrigeration	Green
8802*	Reheat Water Return	Yellow
8803*	Reheat Water Supply	Yellow
7239*	Relief	Yellow
7240*	Relief Air	Blue
7241*	Return	Blue
7242*	Return	Green
7243*	Return	Red
7244*	Return	Yellow
7245*	Ret. Activated Sludge	Yellow
7246*	River Water	Green
7247*	Roof Drain	Green
7248*	Salt Water	Green
7249*	Sanitary Drain	Green
7250*	Sanitary Sewer	Green
7251*	Sanitary Sewer	Yellow
7252*	Sanitary Vent	Yellow
7253*	Sanitary Waste	Yellow
7254*	Seal Water	Green
7255*	Secondary	Green
7256*	Service Air	Yellow

Catalog Number	Legend	Bkgd Color
7257*	Service Water	Green
7258*	Sewage	Yellow
7259*	Sewer	Green
7260*	Sludge	Yellow
7261*	Slurry	Yellow
8804*	Soap	Yellow
7262*	Sodium Chlorate	Yellow
7263*	Sodium Hydroxide	Yellow
7264*	Sodium Hypochlorite	Yellow
7265*	Soft Water	Green
7266*	Solvent	Yellow
8807*	Spent Acid	Yellow
7267*	Sprinkler	Red
7268*	Sprinkler Fire	Red
7269*	Sprinkler Water	Red
7270*	Steam	Yellow
7271*	Steam Return	Yellow
7272*	Steam Supply	Yellow
7273*	Storm Drain	Green
7274*	Storm Sewer	Green
7275*	Storm Water	Green
7276*	Suction	Yellow
8808*	Sulfur	Yellow
7277*	Sulfur Dioxide	Yellow
7278*	Sulfur Dioxide Liquid	Yellow
7279*	Sulfuric Acid	Yellow
7280*	Sump Pump Discharge	Yellow
7281*	Supply	Blue
7282*	Supply	Green
7311*	Supply	Yellow
8809*	Tank Drain	Yellow
7283*	Tempered Water	Yellow
7284*	Toluene	Yellow
7285*	Tower Water	Green
7286*	Tower Water Return	Green
7287*	Tower Water Supply	Green
7288*	Transfer	Yellow
7289*	Treated Water	Green
7290*	Unsafe Water	Yellow
7291*	Vacuum	Yellow
7292*	Vacuum	Green
7293*	Valve	Yellow
7294*	Vapor	Yellow
7295*	Vent	Yellow
7296*	Vent	Green
7297*	Vent	Blue
8920*	Warm Water	Green
7298*	Waste	Yellow
7299*	Waste	Green
7300*	Waste Activated Sludge	Yellow
7301*	Waste Water	Green
7302*	Waste Water	Yellow
7303*	Water	Yellow
7304*	Water	Green
8921*	Weak Black Liquor	Yellow
8922*	Weak White Liquor	Yellow
7305*	Well Water	Green
8923*	White Liquor	Yellow
7306*	White Water	Yellow

Spanish Legends

Legend	Bkgd Color	Style 1HV	Style 1	Style 4	Style 3C
AGUA	Green	83596	83540	83576	83615
AGUA DE REFRIGERACION	Green	83484	83424	83460	-
AGUA FRIA	Green	-	83418	83453	83498
AGUA POTABLE	Yellow	-	83522	83558	-
AGUA REFRIGERADA	Green	83477	83414	83449	-
AGUA PROTEC. PAPA INCENDIOS	Red	-	83430	83466	-
AIRE	Blue	-	83400	83436	-
AIRE COMPRIMIDO	Blue	-	83421	83456	83501
AIRE USO MEDICO	Yellow	-	83514	83550	83599
CAUSTICA	Yellow	-	83413	83448	83496

Legend	Bkgd Color	Style 1HV	Style 1	Style 4	Style 3C
DESAGUE SANITARIO	Green	83589	83527	83563	-
GAS	Yellow	83489	83432	83468	83505
GAS NATURAL	Yellow	83585	83517	83553	83601
HIDROGENO	Yellow	-	83510	83545	83598
OXIGENO	Green	-	83520	83556	83604
RESPIRADERO	Yellow	-	83537	83573	83612
RETORNO DE AGUA REFRIGERADA	Green	83478	83415	83450	-
SUMINISTRO AGUA REFRIGERADA	Green	83479	83416	83451	-
VACIO USO MEDICO	White	-	83515	83551	83600
VAPOR	Yellow	83590	83530	83566	83607



Self-Sticking Pipe Markers

magtool.com

Pipe Markers



Food & Beverage Self-Sticking Pipe Markers

- Laminated B-681 polyester seals in and protect graphics
- Industrial grade self-adhesive protects against bacteria or moisture trapping behind the pipe marker
- All stock markers meet ASME (ANSI) when used with arrow tape
- For clean room applications, the material liner should be removed prior to entering the clean room

Style and Size Chart

Style Code	Outside Diameter	Letter Height	Style Description	Style Example
Style: 1	2-1/2" to 7-7/8"	2"	One 2-1/4" x 14" marker per card	HEATING RETURN
Style: 1HV	8" or greater	3-1/2"	One 4" x 24" marker per card	HEATING RETURN
Style: 3C	less than 34"	1/2"	Three 2-1/4" x 2-3/4" markers per card plus 8 strips of Arrow Tape	
Style: 4	3/4" to 2-3/8"	3/4"	Four 1-1/8" x 7" markers per card	FIRE AUTO SPRINKLERS FIRE AUTO SPRINKLERS

Food & Beverage Industry Legends

Legend	Color	Style 1HV	Style 1	Style 4	Style 3C
Boiler Feedwater	Black on Yellow	105735	105736	105737	105738
Carbon Dioxide	Black on Yellow	105739	105740	105741	105742
Chlorine Water	Black on Yellow	105743	105744	105745	105746
Condensate Return	Black on Yellow	105747	105748	105749	105750
DC LIQ Ammonia HIGH	Black on Yellow	105751	105752	105753	105754
Diesel Fuel	Black on Yellow	105755	105756	105757	105758
Glycol Return	Black on Yellow	105759	105760	105761	-
Glycol Supply	Black on Yellow	105763	105764	105765	105766
HGD LIQ Ammonia HIGH	Black on Yellow	105767	105768	105769	105770
High Pressure Steam	Black on Yellow	105771	105772	105773	105774
Hot Water Return	Black on Yellow	105775	105776	105777	105778
Hot Water Supply	Black on Yellow	105779	105780	105781	105782
HTRL LIQ Ammonia LOW	Black on Yellow	105783	105784	105785	105786
HTRS LIQ VAP Ammonia LOW	Black on Yellow	105787	105788	105789	105790
LSS VAP Ammonia LOW	Black on Yellow	105791	105792	105793	105794
LTRL LIQ Ammonia LOW	Black on Yellow	105795	105796	105797	105798
LTRS LIQ VAP Ammonia LOW	Black on Yellow	105799	105800	105801	105802
Natural Gas	Black on Yellow	105803	105804	105805	105806
Compressed Air	White on Blue	105807	105808	105809	105810
Vacuum	White on Blue	105811	105812	105813	105814
Abandoned	White on Green	106063	106064	106065	106066
City Water	White on Green	106067	106068	106069	106070
Condensate Drain	White on Green	106071	106072	106073	106074
Condenser Water Return	White on Green	106075	106076	106077	106078

Legend	Color	Style 1HV	Style 1	Style 4	Style 3C
Condenser Water Supply	White on Green	106079	106080	106081	106082
Cooking Oil	White on Green	106083	106084	106085	106086
Cooling Water Return	White on Green	106087	106088	106089	106090
Cooling Water Supply	White on Green	106091	106092	106093	106094
Corn Oil	White on Green	106095	106096	106097	106098
Domestic Cold Water	White on Green	106099	106100	106101	106102
Domestic Hot water	White on Green	106103	106104	106105	106106
Drain	White on Green	106107	106108	106109	106110
Frying Oil - New	White on Green	106111	106112	106113	106114
High Pressure Water	White on Green	106115	106116	106117	106118
Non-Potable Chilled Water Return	White on Green	106119	106120	106121	106122
Non-Potable Chilled Water Supply	White on Green	106123	106124	106125	106126
Non-Potable Water	White on Green	106127	106128	106129	106130
Potable Chilled Water Return	White on Green	106131	106132	106133	106134
Potable Chilled Water Supply	White on Green	106135	106136	106137	106138
Potable Heat Reclaim	White on Green	106139	106140	106141	106142
Potable Water	White on Green	106143	106144	106145	106146
Potable Water - Cold	White on Green	106147	106148	106149	106150
Potable Water - Hot	White on Green	106151	106152	106153	106154
Salad Oil	White on Green	106155	106156	106157	106158
Virgin Oil	White on Green	106159	106160	106161	106162
Sprinkler Water	White on Red	106163	106164	106165	106166

Food and Beverage Directional Flow Arrow Tape

- B-302 self-sticking vinyl with protective overlaminat
- For clean room application the material liner should be removed prior to entering the clean room
- Meets ASME (ANSI) when used with the standard pipe marker



Color	1" x 30 yds	2" x 30 yds	4" x 30 yds
White on Red	-	106168	106169
White on Green	-	106171	106172
White on Blue	-	106174	106175
Black on Yellow	106176	106177	106178

Self-Sticking Pipe Markers

magtool.com



Roll Form Pipe Markers

- Eliminates need for precise measurement of pipe diameter -- simply cut to the size you need from 30' long roll
- B-946 material adheres to itself for easy wrap-around marker installation
- Legend repeats 65 times per roll
- Available in both 8" and 12" widths

Legend	Color	8" x 30'	12" x 30'
(Blank)	Clear	41594	15504
(Blank)	Yellow	41596	-
(Blank)	Green	41597	-
(Blank)	Blue	41598	15507
(Blank)	Red	41599	15508
(Blank)	Black/Yellow	41532	15509
Lb Steam	Black/Yellow	41483	15600
Acid	Black/Yellow	41538	15500
Alum	Black/Yellow	41539	15501
Asbestos Free	White/Blue	41593	15502
Black Liquor	Black/Yellow	41523	15503
Bleached Liquor	Black/Yellow	52641	52642
Bleach Stock	Black/Yellow	52643	52644
Boiler Feed Water	Black/Yellow	41537	15512
Caustic	Black/Yellow	41545	15515
Caustic Soda	Black/Yellow	41535	15516
Chilled Water	White/Green	41518	15517
Chlorine	Black/Yellow	41530	15518
Chlorine Gas	Black/Yellow	41549	15520
Circulating Water	White/Green	41551	15521
City Water	White/Green	41522	15522
Cold Water	White/Green	41512	15523
Compressed Air	Black/Yellow	41455	15535
Compressed Air	White/Blue	41456	15536
Condensate	Black/Yellow	41521	15524
Contains Asbestos	Black/Yellow	52665	81728
Cooling Water	White/Green	41457	15537
Danger Asbestos Insulation	Black/Yellow	41592	15526
Danger Contains Asbestos Fibers	Black/Yellow	41595	15527
Demin Water	White/Blue	52673	52674
Domestic Cold Water	White/Green	41458	15538
Domestic Hot Water	Black/Yellow	41459	15539
Drain	White/Green	41460	15540
Filtered Water	White/Green	41554	15530
Fire Auto Sprinklers	White/Red	41461	15541
Fire Protection Water	White/Red	41462	15542
Fresh Water	White/Green	41555	15532
Fuel Oil	Black/Yellow	41463	15543
Gas	Black/Yellow	41464	15544
Green Liquor	Black/Yellow	41527	15533
High Pressure Steam	Black/Yellow	41519	15534
Hot Water	Black/Yellow	41510	15545
Hot Water Return	Black/Yellow	41465	15582
Hot Water Supply	Black/Yellow	41466	15583
Hydrochloric Acid	Black/Yellow	41557	15546

Legend	Color	8" x 30'	12" x 30'
Hydrogen	Black/Yellow	41467	15584
Hydrogen Peroxide	Black/Yellow	41558	15547
Hydrogen Sulfide	Black/Yellow	41559	15548
Industrial Water	White/Green	41468	15585
Lime Mud	Black/Yellow	41560	15549
Low Pressure Steam	Black/Yellow	41520	15550
Make-Up Water	White/Green	41562	15552
Mill Air	White/Blue	41563	15553
Mill Water	White/Green	41564	15554
Natural Gas	Black/Yellow	41511	15556
Noncondensable Gas	Black/Yellow	41565	15555
Oxygen	Black/Yellow	41469	15586
Oxygen	White/Blue	41470	15587
Plant Air	Black/Yellow	41471	15588
Pond Water	White/Green	41567	15557
Potable Water	White/Green	41472	15589
Process Water	White/Green	41568	15558
Raw Water	White/Green	41570	15560
Return	Black/Yellow	41514	15561
Return	White/Green	41515	15562
Roof Drain	White/Green	41473	15590
Sanitary Sewer	Black/Yellow	41474	15591
Seal Water	White/Green	41572	15563
Sodium Hypochlorite	Black/Yellow	41575	15566
Sprinkler Fire	White/Red	41475	15592
Sprinkler Water	White/Red	41476	15593
Steam	Black/Yellow	41513	15567
Storm Drain	White/Green	41477	15594
Sulfur Dioxide	Black/Yellow	41579	15569
Sulfuric Acid	Black/Yellow	41536	15570
Supply	Black/Yellow	41516	15571
Supply	White/Green	41517	15572
Tower Water	White/Green	41478	15595
Treated Water	White/Green	41582	15573
Vacuum	Black/Yellow	41479	15596
Vent	Black/Yellow	41480	15597
Warm Mill Water	Black/Yellow	41584	15574
Waste Water	Black/Yellow	41586	15576
Water	Black/Yellow	41481	15598
Water	White/Green	41482	15599
Weak Wash	Black/Yellow	41589	15578
White Liquor	Black/Yellow	41524	15580
White Water	Black/Yellow	41525	15581



Need a custom legend?

Contact Brady to customize pipe markers to fit the unique needs of your facility.



Self-Sticking Pipe Markers

magtool.com



Pipe Markers

Pipe Markers-To-Go

- Made of economical B-736 surface printed plastic for use on smooth, clean, dry pipe surfaces
- Markers withstand temperatures from -40°F to 212°F
- Supplied in rolls of 25 identical markers and matching arrows
- Arrows may be applied to indicate flow in either direction
- Ideal for on-the-spot repair or replacement of damaged or missing markers

Legend	Color	8" x 30'	12" x 30'
(Blank)	Yellow	20483	73944
(Blank)	Green	20484	73945
(Blank)	Blue	20485	73946
(Blank)	Red	20486	73947
Arrow	Yellow	20487	73948
Arrow	Green	20488	73949
Arrow	Blue	20489	73950
Arrow	Red	20490	73951
Acid	Yellow	20400	73860
Air	Blue	20401	73861
Asbestos Free Insulation	Blue	20402	73862
Boiler Blowdown	Yellow	20403	73863
Boiler Feed Water	Yellow	20404	73864
Carbon Dioxide	Yellow	20405	73865
Caustic	Yellow	20406	73866
Chilled Water	Green	20407	73867
Chilled Water Return	Green	20408	73868
Chilled Water Supply	Green	20409	73869
Circulating Water	Green	20410	73870
City Water	Green	20411	73871
Cold Water	Green	20412	73872
Cold Water Return	Green	20413	73873
Cold Water Supply	Green	20414	73874
Compressed Air	Blue	20415	73875
Compressed Air	Yellow	20416	73877
Condensate	Yellow	20417	73878
Condensate Return	Yellow	20418	73879
Condensate Supply	Yellow	20419	73880
Condenser Water Return	Green	20421	73882
Condenser Water Supply	Green	20422	73883
Cooling Water	Green	20424	73885
Domestic Cold Water	Green	20425	73886
Domestic Hot Water	Yellow	20426	73887
Drain	Green	20427	73888
Exhaust	Yellow	20428	73889
Filtered Water	Green	20429	73890
Fire Protection Water	Red	20430	73891
Fuel Oil	Yellow	20431	73892
Gas	Yellow	20432	73893
Glycol	Yellow	20433	73894
Heating	Yellow	20434	73895
Heating Return	Yellow	20435	73896
Heating Supply	Yellow	20436	73897
High Pressure Air	Yellow	20437	73898
High Pressure Condensate	Yellow	20438	73899

Legend	Color	8" x 30'	12" x 30'
High Pressure Steam	Yellow	20439	73900
Hot Water	Yellow	20440	73901
Hot Water Return	Yellow	20441	73902
Hot Water Supply	Yellow	20442	73903
Low Pressure Air	Blue	20443	73904
Low Pressure Condensate	Yellow	20444	73905
Low Pressure Steam	Yellow	20445	73906
Make-Up Water	Green	20446	73907
Medium Pressure Air	Blue	20447	73908
Medium Pressure Steam	Yellow	20448	73909
Natural Gas	Yellow	20449	73910
Nitrogen	Green	20450	73911
Non-Potable Water	Yellow	20452	73913
Oil	Yellow	20453	73914
Oxygen	Yellow	20454	73915
Plant Air	Yellow	20455	73916
Potable Water	Green	20456	73917
Propane Gas	Yellow	20457	73918
Raw Water	Green	20458	73919
Refrigerated Liquid	Yellow	20459	73920
Refrigerated Suction	Yellow	20460	73921
Return	Green	20461	73922
Return	Yellow	20462	73923
Roof Drain	Green	20463	73924
Sanitary Drain	Green	20464	73925
Sanitary Sewer	Green	20465	73926
Sprinkler Fire	Red	20466	73927
Sprinkler Water	Red	20467	73928
Steam	Yellow	20468	73929
Steam Return	Yellow	20469	73930
Steam Supply	Yellow	20470	73931
Storm Drain	Blue	20471	73932
Supply	Green	20472	73933
Supply	Yellow	20473	73934
Tower Water	Green	20474	73935
Vacuum	Green	20475	73936
Vacuum	Yellow	20476	73937
Vent	Green	20477	73938
Vent	Yellow	20478	73939
Waste	Yellow	20479	73940
Waste Water	Green	20480	73941
Water	Green	20481	73942
Water	Yellow	20482	73943



Did You Know? Directional Flow

Banding each marker with directional flow arrows is recommended to indicate contents flow direction and to secure markers to the pipe.

View all direction flow tape on page 246.



Self-Sticking Pipe Markers

magtool.com



Semiconductor & Chemical Pipe Markers

- For use on small diameter piping or tubing 3/4" or less
- Meets ASME A13.1 color specifications
- Made from B-946 self-sticking vinyl with permanent adhesive
- Marker size: 1/2" x 2-1/4" and includes 28 markers per card
- Use with 1" arrow tape

Legend	Color	1/2" x 2-1/4"
(Arrow)	Yellow	91883
(Arrow)	Green	91884
(Arrow)	Red	91885
(Arrow)	Blue	91886
(Arrow)	Orange	91887
(Arrow)	White	91888
(Blank)	Yellow	91889
(Blank)	Green	91890
(Blank)	Red	91891
(Blank)	Blue	91892
(Blank)	Orange	91893
(Blank)	White	91894
Acetone	Yellow	91895
Acid	Yellow	91896
Acid Waste	Yellow	91897
Air	Green	91898
Ammonia	Yellow	91899
Argon	Yellow	91900
Argon	Green	91901
Carbon Dioxide	Yellow	91906
Carbon Dioxide	Green	91907
Caustic	Green	91909
Chilled Water	Green	91910

Legend	Color	1/2" x 2-1/4"
Chlorine	Yellow	91911
City Water	Green	91913
Clean Dry Air	Yellow	91914
Clean Dry Air	Green	91915
Cold Water	Green	91916
Compressed Air	Blue	91917
Cooling Water	Green	91918
D.I. Water	Green	91920
Deionized Water	Green	91921
Drain	Yellow	91925
Drain	Green	91926
Exhaust	Yellow	91930
Heating Water	Yellow	91933
Helium	Yellow	91934
Helium	Green	91935
Hot	Yellow	91936
Hot Water	Yellow	91937
Hydrochloric Acid	Yellow	91938
Hydrofluoric Acid	Yellow	91939
Hydrogen	Yellow	91940
Hydrogen Chloride	Yellow	91942
Industrial Water	Green	91943
Isopropyl Alcohol	Yellow	91944

Legend	Color	1/2" x 2-1/4"
Methyl Alcohol	Yellow	91948
Natural Gas	Yellow	91949
Nitrogen	Blue	91997
Nitrogen	Green	91998
Nitrogen Trifluoride	Yellow	91950
Nitrous Oxide	Yellow	91951
Non-Potable Water	Yellow	91953
Oxygen	Yellow	91955
Phosphine	Yellow	91956
Potable Water	Green	91958
Process Cooling Water	Green	91959
Process Vacuum	Green	91961
Return	Yellow	91964
Return	Green	91965
Silane	Yellow	91966
Solvent	Yellow	91967
Spare	Green	91968
Supply	Yellow	91972
Trichlorosilane	Yellow	91974
Vacuum	Green	91977
Vent	Yellow	91978
Vent	Green	91979
Water	Green	91981



Medical Gas Pipe Markers-On-A-Roll

- Designed to wrap completely around 3/4" piping.
- 3" x 3" markers come complete with direction flow arrows with 1/4" high characters.
- Comply with CGA & NFPA Standards.

Catalog #	Legend	Color	Length	Markers/Roll
98499	Cyclopropane	Black on Orange	15'	60
98621	Helium	White on Brown	15'	60
98838	Medical Vacuum	Black on White	15'	60
98844	Oxygen	White on Green	15'	60



Medical Gas Pipe Markers

- B-946 vinyl pipe markers
- Style 3C: for pipes with an 3/4" outside dia. or less consists of three 2-1/4" x 2-3/4" wrap around labels and four sets of arrow tape
- Style 4: for pipes with a 1" to 2-1/2" outside dia. consists of four 1-1/8" x 7" labels per card

Legend	Color	Style 3C	Style 4
Carbon Dioxide	White Gray	87740	90307
Helium	White Brown	87742	-
Medical Air	White Blue	7183-3C	7183-4
Medical Air	Black Yellow	7184-3C	7184-4
Medical Air 50-55 Psi	Black Yellow	86330	86331
Medical Vacuum	White Blue	7185-3C	7185-4
Medical Vacuum	Black White	7186-3C	7186-4
Nitrogen	White Black	87745	90331
Nitrogen 180-200 Psi	White Black	86334	-
Nitrous Oxide	White Blue	87746	90333
Nitrous Oxide 50-55 Psi	White Blue	86332	86333
Oxygen	White Green	7210-3C	7210-4
Oxygen 50-55 Psi	White Green	86328	86329



Medical Gas Marking NFPA Update 99-62:

Gas content and operating pressure of medical gas piping systems shall be readily identifiable by appropriate labeling with the name and pressure of the gas contained. Labels shall appear on the piping at intervals of not more than 20ft (6m). Supplementary color identification shall be in accordance with the Compressed Gas Association pamphlet c-9. For more visit NFPA.org.



BradySnap-On™ / Strap-On Pipe Markers

magtool.com

Pipe Markers



BradySnap-On™ Pipe Markers

- Designed for general purpose pipe identification on pipes that have an outside diameter between 3/4" and 6" (including insulation)
- May be applied to dirty, oily, greasy or rough surfaces
- Meet ASME (ANSI) Standard
- Lightweight coiled plastic can be removed and reapplied

Strap-On Pipe Markers

- Designed for general purpose pipe identification on pipes that have a 6" or larger diameter (including insulation)
- May be applied to dirty, oily, greasy or rough surfaces
- Can be removed and reapplied in other areas
- Strap-On Pipe Marker styles F - H include nylon straps

How to order:

1. Choose the desired pipe marker legend below.
2. Replace the asterisk (*) with the style code (A, B, C, D, F, G or H) from the size charts below to indicate your desired pipe marker size and style. (Example: Air = 4001-H)

BradySnap-On™ Pipe Marker Style and Size Chart

Style Code	Outside Diameter	Letter Height
Style: A	3/4" to 1-3/8"	1/2"
Style: B	1-1/2" to 2-3/8"	3/4"
Style: C	2-1/2" to 3-7/8"	1-1/4"
Style: D	4" to 6"	1-1/4"

Strap-On Pipe Marker Style and Size Chart

Style Code	Outside Diameter	Letter Height
Style: F	6" to 7-7/8"	1-1/4"
Style: G	8" to 9-7/8"	2-1/2"
Style: H	10" to 15"	3-1/2"

BradySnap-On™ and Strap-On Marker Legends

Catalog Number	Legend	Bkgd Color	Catalog Number	Legend	Bkgd Color	Catalog Number	Legend	Bkgd Color
4010-*	(Blank)	Yellow	4165-*	Blower Air	Green	4030-*	Cold Water Return	Green
4011-*	(Blank)	Green	4015-*	Boiler Blowdown	Yellow	4031-*	Cold Water Supply	Green
4012-*	(Blank)	Red	4016-*	Boiler Feed	Yellow	4032-*	Compressed Air	Yellow
4013-*	(Blank)	Blue	4017-*	Boiler Feed Water	Yellow	4033-*	Compressed Air	Green
4157-*	Acetone	Yellow	4167-*	Breathing Air	Green	4034-*	Compressed Air	Blue
4158-*	Acetylene Gas	Yellow	4018-*	Brine	Green	4035-*	Condensate	Yellow
4000-*	Acid	Yellow	4019-*	Carbon Dioxide	Yellow	4036-*	Condensate Drain	Yellow
4001-*	Air	Green	4020-*	Caustic	Yellow	4037-*	Condensate Return	Yellow
4002-*	Air	Blue	4021-*	Caustic Soda	Yellow	4038-*	Condensate Supply	Yellow
4003-*	Air	Yellow	4169-*	Chemical	Yellow	4039-*	Condenser Water	Green
4160-*	Air Supply	Blue	4022-*	Chilled Water	Green	4040-*	Condenser Water Return	Green
4004-*	Alum	Yellow	4023-*	Chilled Water Return	Green	4041-*	Condenser Water Supply	Green
4005-*	Ammonia	Yellow	4024-*	Chilled Water Supply	Green	4042-*	Cooling Water	Green
4162-*	Argon	Blue	4025-*	Chlorine	Yellow	4043-*	Cooling Water Return	Green
4006-*	Argon	Green	4026-*	Chlorine Gas	Yellow	4044-*	Cooling Water Supply	Green
4007-*	Asbestos Free	Blue	4170-*	Circulating Water	Green	4045-*	Danger Asbestos Insulation	Yellow
4008-*	Asbestos Free Insulation	Blue	4027-*	City Gas	Yellow	4046-*	Deionized Water	Green
4009-*	Asbestos Insulation	Yellow	4028-*	City Water	Green	4172-*	Deionized Water Return	Green
4014-*	Blowdown	Yellow	4029-*	Cold Water	Green	4173-*	Deionized Water Supply	Green

BradySnap-On™ / Strap-On Pipe Markers

magtool.com

BradySnap-On™ and Strap-On Marker Legends (continued)

Catalog Number	Legend	Bkgd Color	Catalog Number	Legend	Bkgd Color	Catalog Number	Legend	Bkgd Color
4174-*	Diesel Oil	Yellow	4083-*	Hydraulic Line	Yellow	4266-*	Reheat Water Return	Yellow
4175-*	Discharge	Green	4199-*	Hydraulic Oil	Yellow	4267-*	Reheat Water Supply	Yellow
4047-*	Distilled Water	Green	4084-*	Hydraulic Supply	Yellow	4119-*	Return	Yellow
4048-*	Domestic Cold Water	Green	4085-*	Hydrochloric Acid	Yellow	4120-*	Return	Green
4049-*	Domestic Cold Water Return	Green	4086-*	Hydrogen	Yellow	4121-*	Roof Drain	Green
4050-*	Domestic Cold Water Supply	Green	4087-*	Hydrogen Peroxide	Yellow	4122-*	Sanitary Drain	Green
4051-*	Domestic Hot Water	Yellow	4088-*	Industrial Water	Green	4123-*	Sanitary Sewer	Green
4052-*	Domestic Hot Water Return	Yellow	4222-*	Instrument Air	Yellow	4269-*	Service Air	Yellow
4053-*	Domestic Hot Water Supply	Yellow	4089-*	Instrument Air	Blue	4270-*	Service Water	Green
4054-*	Drain	Yellow	4225-*	Lab Vent	Yellow	4271-*	Sewage	Yellow
4055-*	Drain	Green	4226-*	Lab Waste	Yellow	4272-*	Sewer	Green
4176-*	Drain Water	Green	4227-*	Liquid Nitrogen	Yellow	4273-*	Sludge	Yellow
4056-*	Drinking Water	Green	4228-*	Low Pressure	Green	4274-*	Soap	Yellow
4177-*	Dye	Yellow	4090-*	Low Pressure Air	Yellow	4275-*	Sodium Hydroxide	Yellow
4178-*	Effluent	Yellow	4229-*	Low Pressure Air	Green	4124-*	Sodium Hypochlorite	Yellow
4179-*	Electric Traced	Yellow	4091-*	Low Pressure Condensate	Yellow	4125-*	Soft Water	Green
4180-*	Engine Oil	Yellow	4240-*	Low Pressure Gas	Yellow	4277-*	Sprinkler	Red
4057-*	Exhaust	Yellow	4241-*	Low Pressure Natural Gas	Yellow	4127-*	Sprinkler Fire	Red
4181-*	Exhaust Air	Blue	4092-*	Low Pressure Steam	Yellow	4128-*	Sprinkler Water	Red
4058-*	Filtered Water	Green	4243-*	Low Pressure Water	Green	4129-*	Steam	Yellow
4184-*	Filtrate	Yellow	4244-*	Lube Oil	Yellow	4130-*	Steam Return	Yellow
4059-*	Fire Auto Sprinklers	Red	4093-*	Make-Up Water	Green	4131-*	Steam Supply	Yellow
4185-*	Fire Main	Red	4094-*	Med. Pressure Condensate	Yellow	4132-*	Storm Drain	Green
4060-*	Fire Protection Water	Red	4095-*	Medium Pressure Steam	Yellow	4133-*	Storm Sewer	Green
4061-*	Freon	Green	4096-*	Medical Air	Blue	4134-*	Storm Water	Green
4186-*	Fresh Water	Green	4245-*	Mixed Gas	Yellow	4135-*	Sulfur Dioxide	Yellow
4062-*	Fuel Gas	Yellow	4097-*	Natural Gas	Yellow	4136-*	Sulfuric Acid	Yellow
4063-*	Fuel Oil	Yellow	4247-*	Nitric Acid	Yellow	4137-*	Sump Pump Discharge	Yellow
4064-*	Fuel Oil Return	Yellow	4098-*	Nitrogen	Yellow	4138-*	Supply	Yellow
4065-*	Fuel Oil Supply	Yellow	4099-*	Nitrogen	Green	4139-*	Supply	Green
4066-*	Fuel Oil Vent	Yellow	4100-*	Nitrogen	Blue	4279-*	Tank Drain	Yellow
4067-*	Gas	Yellow	4101-*	Nitrous Oxide	Yellow	4140-*	Tempered Water	Yellow
4187-*	Gas	Blue	4102-*	Non-Potable Water	Yellow	4141-*	Toluene	Yellow
4068-*	Glycol	Yellow	4103-*	Oil	Yellow	4142-*	Tower Water	Green
4189-*	Glycol Return	Yellow	4248-*	Outside Air	Blue	4143-*	Tower Water Return	Green
4190-*	Glycol Supply	Yellow	4104-*	Overflow	Yellow	4144-*	Tower Water Supply	Green
4070-*	Heating Return	Yellow	4105-*	Oxygen	Yellow	4145-*	Treated Water	Green
4071-*	Heating Supply	Yellow	4106-*	Oxygen	Green	4146-*	Vacuum	Yellow
4072-*	Heating Water Return	Yellow	4107-*	Oxygen	Blue	4147-*	Vacuum	Green
4073-*	Heating Water Supply	Yellow	4249-*	Peroxide	Yellow	4148-*	Vent	Yellow
4074-*	Helium	Green	4108-*	Plant Air	Yellow	4149-*	Vent	Blue
4075-*	High Pressure Air	Yellow	4109-*	Plant Water	Green	4150-*	Vent	Green
4076-*	High Pressure Condensate	Yellow	4110-*	Plumbing Vent	Green	4151-*	Waste	Yellow
4193-*	High Pressure Gas	Yellow	4260-*	Polymer	Yellow	4152-*	Waste Water	Yellow
4194-*	High Pressure Natural Gas	Yellow	4261-*	Potable	Green	4153-*	Waste Water	Green
4195-*	High Pressure Nitrogen	Yellow	4111-*	Potable Water	Green	4154-*	Water	Yellow
4077-*	High Pressure Steam	Yellow	4112-*	Process Water	Yellow	4155-*	Water	Green
4078-*	High Pressure Water	Yellow	4113-*	Process Water	Green	4281-*	Weak Black Liquor	Yellow
4197-*	Hot	Yellow	4114-*	Propane Gas	Yellow	4156-*	Well Water	Green
4079-*	Hot Water	Yellow	4264-*	Pumped Condensate	Yellow	4283-*	White Liquor	Yellow
4080-*	Hot Water Recirculation	Yellow	4115-*	Rain Water	Green			
4081-*	Hot Water Return	Yellow	4116-*	Raw Water	Green			
4082-*	Hot Water Supply	Yellow	4117-*	Refrigerant Liquid	Yellow			
4198-*	Hydraulic Fluid	Yellow	4118-*	Refrigerant Suction	Yellow			



Can't Find Your Legend? Consider A Custom Pipe Marker

Brady offers a wide variety of custom pipe marker solutions to fit your facility's needs. Customize the color and legend in any of the pipe marker styles seen in this catalog.

View BradyID.com or contact Brady Customer Service at 1-800-661-9983.



Pipe Markers

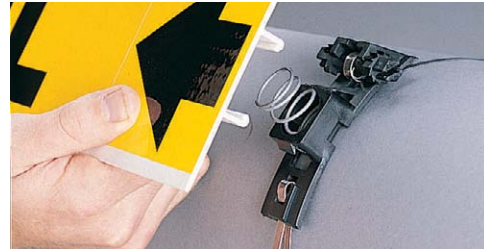
High Performance Pipe Markers

magtool.com



B-689 High Performance Pipe Markers

- PVF overlaminated polyester construction seals in and protects graphics
- Markers resist abrasion, chemicals, high humidity and outdoor weathering
- Pre-coiled for easy wrap-around installation on pipe up to 7-7/8" in diameter



B-681/B-883 High Performance, High Visibility (HPHV) Markers

- Ideal for pipes 8" and larger in diameter
- Overlaminated graphics are factory applied to a fiberglass plastic carrier
- Easy strap-on installation of fiberglass plastic carrier
- Includes two Heavy-Duty Mounting Clips that apply to pipe using Continuous Stainless Steel Strapping (sold separately)

How to order:

1. Choose the desired pipe marker legend below.
2. Replace the asterisk (*) with the style code (0, I, II, or HPHV) from the size charts below to indicate your desired pipe marker size and style. (Example: Air = 5625-II)

High Performance Pipe Markers Style and Size Chart

Style Code	Outside Dia.	Letter Height	Max Char.
Style: 0	1/2" to 1-3/8"	1/2"	22
Style: I	1-1/2" to 2-3/8"	3/4"	13
Style: II	2-1/2" to 7-7/8"	1-1/4"	13

HPHV Pipe Markers Style and Size Chart

Style Code	Outside Dia.	Letter Height	Max Char.
Style: HPHV	8" or larger	3-1/2"	16

High Performance Pipe Marker Legends

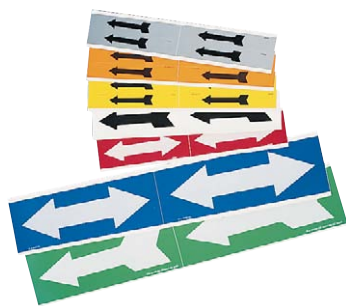
Catalog Number	Legend	Bkgd Color
5622-*	Abandoned	Yellow
5624-*	Acid	Yellow
5631-*	Anhydrous Ammonia	Yellow
5632-*	Asbestos Free Insulation	Blue
5634-*	Black Liquor	Yellow
5636-*	Boiler Blowdown	Yellow
5637-*	Boiler Feed Water	Yellow
5643-*	Caustic	Yellow
5645-*	Chemical Feed	Yellow
5647-*	Chilled Water Return	Green
5648-*	Chilled Water Supply	Green
5653-*	Chlorine Water	Yellow
5654-*	Circulating Water	Green
5655-*	City Water	Green
5658-*	Cold Water	Green
5660-*	Compressed Air	Blue
5662-*	Condensate	Yellow
5663-*	Condensate Drain	Green
5664-*	Condensate Return	Yellow
5665-*	Condenser Water Return	Green
5668-*	Cooling Water	Green
5671-*	Deionized Water	Green
5672-*	Demin. Water	Green
5673-*	Domestic Cold Water	Green
5675-*	Domestic Hot Water	Yellow
5676-*	Domestic Hot Water Return	Yellow
5677-*	Domestic Hot Water Supply	Yellow
5678-*	Drain	Green
5685-*	Filtrate	Yellow
5686-*	Fire Auto Sprinklers	Red
5688-*	Fire Protection	Red
5689-*	Fire Protection Water	Red
5691-*	Foul Condensate	Yellow

Catalog Number	Legend	Bkgd Color
5692-*	Fresh Water	Green
5693-*	2# Fuel Oil	Yellow
5694-*	6# Fuel Oil	Yellow
5695-*	Fuel Oil	Yellow
5696-*	Fuel Oil Return	Yellow
5697-*	Fuel Oil Supply	Yellow
5698-*	Gas	Yellow
5699-*	Green Liquor	Yellow
5700-*	Heating Return	Yellow
5701-*	Heating Supply	Yellow
5702-*	Heating Water Return	Yellow
5703-*	Heating Water Supply	Yellow
5706-*	High Pressure Steam	Yellow
5707-*	Hot Water	Yellow
5708-*	Hot Water Return	Yellow
5709-*	Hot Water Supply	Yellow
5710-*	Hydraulic Fluid	Yellow
5712-*	Hydrochloric Acid	Yellow
5715-*	Instrument Air	Yellow
5716-*	Instrument Air	Blue
5718-*	Lime Mud	Yellow
5719-*	Low Pressure Condensate	Yellow
5720-*	Low Pressure Steam	Yellow
5721-*	Lube Oil	Yellow
5722-*	Make-Up Water	Green
5723-*	Medium Pressure Steam	Yellow
5724-*	Mill Air	Blue
5727-*	Nitric Acid	Yellow
5728-*	Nitrogen	Green
5729-*	Nitrogen	Yellow
5730-*	Non-Potable Water	Yellow
5731-*	Noncondensable Gas	Yellow
5734-*	Oxygen	Blue

Catalog Number	Legend	Bkgd Color
5735-*	Oxygen	Green
5736-*	Oxygen	Yellow
5737-*	Peroxide	Yellow
5738-*	Plant Air	Yellow
5739-*	Plant Water	Green
5740-*	Polymer	Yellow
5746-*	Process Water	Yellow
5747-*	Process Water	Green
5748-*	Propane Gas	Yellow
5753-*	River Water	Green
5754-*	Roof Drain	Green
5755-*	Sanitary Sewer	Yellow
5757-*	Seal Water	Yellow
5758-*	Seal Water	Green
5761-*	Sodium Hypochlorite	Yellow
5765-*	Sprinkler Water	Red
5613-*	120# Steam	Yellow
5617-*	200# Steam	Yellow
5767-*	Steam	Yellow
5769-*	Storm Drain	Green
5774-*	Sulfuric Acid	Yellow
5775-*	Treated Water	Green
5776-*	Turpentine	Yellow
5777-*	Vacuum	Green
5778-*	Vacuum	Blue
5779-*	Vacuum	Yellow
5782-*	Warm Mill Water	Green
5783-*	Warm Water	Green
5784-*	Waste Water	Yellow
5787-*	Water	Yellow
5790-*	Well Water	Green
5791-*	White Liquor	Yellow
5793-*	White Water	Green

Pipe Marker Accessories

magtool.com



Self Sticking Vinyl Arrows

- Durable B-946 material withstands the elements indoors or out
- Mounted on easy-to-use cards

	1-1/8" x 7" (4/Card)	2-1/2" x 7" (2/Card)	4" x 12" (2/Card)
Single Direction Arrow			
Blk/Ylw	93242	76507	93390
Wht/Blu	93247	76502	93392
Wht/Rd	93252	76505	93394
Wht/Grn	93257	76503	93396
Blk/Org	93262	76504	-
Blk/Wht	93267	76506	-
Blk/Alum	93272	76501	-
Double Direction Arrow			
Blk/Ylw	93243	76514	93391
Wht/Blu	93248	76509	-
Wht/Rd	-	76512	93395
Wht/Grn	93258	76510	93397



Directional Flow Arrow Tape

- Durable B-946 material withstands the elements indoors or out
- Provides 360° visibility
- Supplied in liner-mounted rolled form - use two bands per marker

Color	1" x 30 yds (1440 Arrows)	2" x 30 yds (720 Arrows)	4" x 30 yds (270 Arrows)
Blk/Ylw	91424	91420	91287
Wht/Grn	91425	91421	91290
Blk/Grn	91412	91416	91408
Wht/Rd	91426	91422	91288
Wht/Blu	91427	91423	91289
Blk/Wht	91413	91417	91409
Blk/Org	91414	91418	91410
Blk/Gry	91415	91419	91411



Solid Color Banding Tape

- Durable B-946 material withstands the elements indoors or out
- Meets ASME color field size recommendation when used in combination with worded legends and directional flow arrows
- Supplied in liner-mounted rolled form
- Use two bands per marker

Color	1" x 30 yds	2" x 30 yds	4" x 30 yds
White	91429	91431	91433
Clear	36309	36314	36319
Yellow	36301	55260	36287
Green	36304	55263	36290
Red	36302	55261	36288
Orange	91428	91430	91432
Blue	36303	55262	36289
Brown	36305	36310	36315
Black	36306	36311	36316
Gray	36307	36312	36317
Purple	36308	36313	36318



Reflective Pipe Banding

- Increase night time visibility throughout your facility
- Made of 5 mil vinyl
- Withstands temperature of -40°F (-40°C) to 180°F (82°C) degrees.
- Exceeds Federal Spec. C-S-300, Class I and FP-79 type II

Color	1" x 30 yds	2" x 30 yds	4" x 30 yds
Yellow	105976	105982	105988
Green	105973	105979	105985
Red	105974	105980	105986
Blue	105972	105978	105984
Orange	105971	105977	105983
White	105975	105981	105987



ISO 14726 Pipe Banding Tape

- Help reduce accidents and damage to machinery
- Provides 360° visibility
- ISO14726 Marine Standard defines the principle colors for identifying pipes - each color indicates a certain gauge of substances

Color	1" x 30 yds	2" x 30 yds	4" x 30 yds
Green	-	105564	105574
Blue	-	105562	105572
Brown	-	105563	105573
Gray	-	105565	105575
Purple	-	-	105576
Maroon	105557	105567	105577



Stock IIAR Tape

- Ideal for use with IIAR Pipe Markers
- Made of B-946 Self-Sticking Vinyl
- Use Arrow Tapes to indicate flow direction

Legend	Color	2" x 30 yds	4" x 30 yds
VAP	Black on Blue	55364	55365
HIGH	Black on Red	-	55368
LOW	Black on Green	-	55371



Pipe Marker Accessories

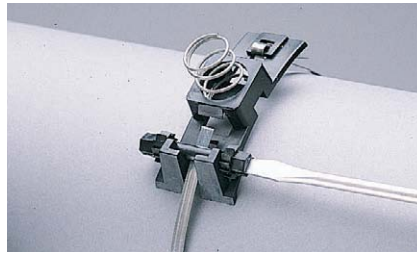
magtool.com



Blank HPHV Carrier

- Ideal for marking custom markers on the spot
- Fiberglass carrier is blank (no label) and comes with two clips for installation
- Sized to accommodate the largest ASME (ANSI) requirements, 4.25" x 32"

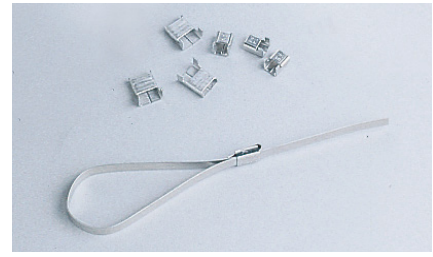
Catalog #	Description	Qty.
59918	Blank HPHV Carrier	1



Stainless Steel Strapping

- Type 316 Stainless Steel Strapping is highly corrosion and heat resistant
- Ideal for HPHV pipe markers, HEET Tags or for your own purpose
- Continuous form requires separate stainless steel heads for uses other than HPHV pipe marker installation (sold separately)

Catalog #	Description
42331	1/4" x 100' steel strapping
42332	1/4" x 250' steel strapping

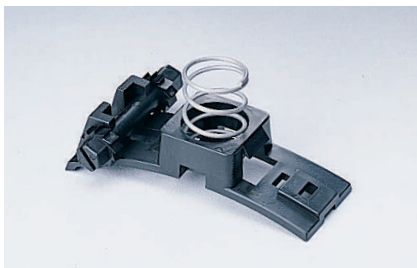


Stainless Steel Banding Heads

- Use with Continuous Strapping to create secure closures
- Stainless steel heads fit 1/4" strapping (sold separately)

Catalog #	Description	Qty.
90910	Type 316 Stainless Steel	100

Pipe Markers



Heavy-Duty Mounting Clips

- For use with HPHV pipe markers

Catalog #	Description	Qty.
42335	Heavy Duty Clip	1



Tape Strip Rolls

- Use to re-secure wrap-around pipe markers should they become damaged need to be moved

Catalog #	Description
59946	2" x 30 yards Tape Strip Roll



Stainless Steel Wire

- 32 mil stainless steel safety wire to be used with wire twister pliers.

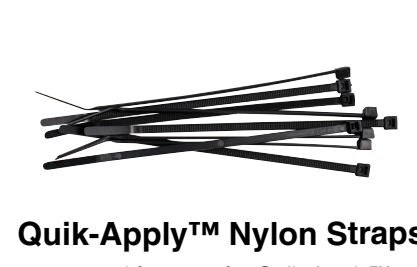
Catalog #	Description	Length
15424	Stainless Steel Safety Wire	1800 ft



Bradylock™ Fastener

- Self-locking heavy duty plastic fastener for Strap-On Markers
- Excellent chemical resistance

Catalog #	Description
41772	1/2" x 150' Bradylock Fastener



Quik-ApPLY™ Nylon Straps

- Standard fastener for Quik-ApPLY™ pipe marker sizes Q1-Q4
- Can be used with a variety of tags including valve and lockout/tagouts
- For larger outer diameters, use BradyLock™ Fasteners

Catalog #	Outside Dia.	Strap Length
91165	1"	6"
91166	2"	7"

? Custom Pipe Markers

Contact Brady to create a custom pipe marking solution for your facility.

Custom Pipe Marker Order Form

magtool.com

Custom Pipe Marker Order Form (Fax completed form to your local distributor)

Order Quote Artwork Attached Ship Via: _____ P.O. # or Request # : _____

Customer Information

Company Name: _____ Name: _____
 Address1: _____ Phone #: _____
 Address2: _____ Fax #: _____
 City: _____ State: _____ Zip: _____
 Email: _____

Distributor Information

Distributor: _____ Contact Name: _____
 Account #: _____ Fax #: _____ Phone #: _____

Pipe Marker Options

B-946 Self-Sticking	
Style Code	Pipe Outside Diameter
3c - (3mrks/card)	Less than 3/4" OD
4 - (4mrks/card)	3/4" to 2-3/8"
1	2-1/2 to 7-7/8" OD
1HV	8" or larger OD

Arrows sold separately.

Brady Snap-On	
Style Code	Pipe Outside Diameter
A	3/4" to 1-3/8" OD
B	1-1/2" to 2-3/8" OD
C	2-1/2" to 3-7/8" OD
D	4" to 6" OD
F	6 to 7-7/8" OD
G	8" to 9-7/8" OD
H	10" to 15" OD

B-689 High Performance	
Style Code	Pipe Outside Diameter
O	1/2" to 1-3/8" OD
I	1-1/2" to 2-3/8" OD
II	2-1/2" to 7-7/8" OD
III	8" to 10" OD
IV	10" or larger to 16" OD
V	16" or larger to 22" OD
VI	22" or larger to 26" OD

B-946 Semi Conductor & Chemical	
Style Code	Marker Size
28	1/2" x 2-1/4"

Cable Style	
Style Code	Pipe Outside Diameter
CABLE	3/4" to 5/8" OD

B-681 / B-883 High Performance (HPHV)	
Style Code	Pipe Outside Diameter
HPHV	8" or larger OD

Markers printed with arrows.

Custom Orders

Legend Line 1	Color* (Text / Bkgd)	Pipe Marker Style Code	Material	Quantity
1.				
2.				
3.				
4.				
5.				
6.				
7.				
8.				
9.				
10.				

* Brady standard pipe markers colors are: Yellow, Green, Red, Blue, White, Grey, Brown, Orange, Black, Purple and Clear. Custom colors are available.

