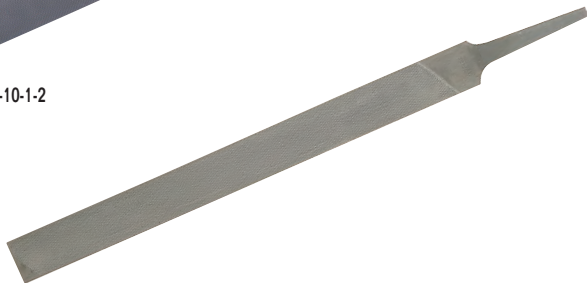




1-100-10-1-2



1-100-10-1-0



1-104-10-2-0



1-106-08-1-2



1-106-08-1-0



**MILL FILE (USA TYPE)-TWO FLAT EDGES**

**Hand File**

| Product Code                       | Length (Inch) | Width (Inch) | Height (Inch) | Teeth Per Inch (TPI) | Type of Cut |
|------------------------------------|---------------|--------------|---------------|----------------------|-------------|
| <b>With Bi-Molded ERGO® Handle</b> |               |              |               |                      |             |
| 1-100-06-1-2                       | 6             | 5/8          | 7/64          | 48                   | Bastard     |
| 1-100-06-2-2                       | 6             | 5/8          | 7/64          | 53                   | Second      |
| 1-100-08-1-2                       | 8             | 25/32        | 1/8           | 44                   | Bastard     |
| 1-100-10-1-2                       | 10            | 1            | 143/64        | 40                   | Bastard     |
| 1-100-10-2-2                       | 10            | 1            | 5/32          | 44                   | Second      |

**Without handle**

|              |    |         |       |    |         |
|--------------|----|---------|-------|----|---------|
| 1-100-04-1-0 | 4  | 7/16    | 5/64  | 53 | Bastard |
| 1-100-04-2-0 | 4  | 7/16    | 5/64  | 62 | Second  |
| 1-100-04-3-0 | 4  | 7/16    | 5/64  | 75 | Smooth  |
| 1-100-06-1-0 | 6  | 5/8     | 7/64  | 48 | Bastard |
| 1-100-06-2-0 | 6  | 5/8     | 7/64  | 53 | Second  |
| 1-100-06-3-0 | 6  | 5/8     | 7/64  | 62 | Smooth  |
| 1-100-08-1-0 | 8  | 25/32   | 1/8   | 44 | Bastard |
| 1-100-08-2-0 | 8  | 25/32   | 1/8   | 48 | Second  |
| 1-100-08-3-0 | 8  | 25/32   | 1/8   | 57 | Smooth  |
| 1-100-10-1-0 | 10 | 1       | 5/32  | 40 | Bastard |
| 1-100-10-2-0 | 10 | 1       | 5/32  | 44 | Second  |
| 1-100-10-3-0 | 10 | 1       | 5/32  | 53 | Smooth  |
| 1-100-12-1-0 | 12 | 1 13/16 | 3/16  | 37 | Bastard |
| 1-100-12-2-0 | 12 | 1 13/16 | 3/16  | 40 | Second  |
| 1-100-12-3-0 | 12 | 1 13/16 | 3/16  | 48 | Smooth  |
| 1-100-14-1-0 | 14 | 1 3/8   | 15/64 | 37 | Bastard |
| 1-100-14-2-0 | 14 | 1 3/8   | 15/64 | 40 | Second  |
| 1-100-14-3-0 | 14 | 1 3/8   | 15/64 | 48 | Smooth  |

**Features**

- For filing flat surfaces, sharp corners and shoulders as well as for deburring.
- High removal rate.



**LATHE FILE**

**Engineering File**

| Product Code | Length (Inch) | Width (Inch) | Height (Inch) | Teeth Per Inch (TPI) | Type of Cut |
|--------------|---------------|--------------|---------------|----------------------|-------------|
| 1-104-10-2-0 | 10            | 31/32        | 13/64         | 28                   | Second      |
| 1-104-10-3-0 | 10            | 31/32        | 13/64         | 39                   | Smooth      |
| 1-104-12-2-0 | 12            | 1 11/64      | 3/16          | 23                   | Second      |
| 1-104-12-3-0 | 12            | 1 11/64      | 3/16          | 33                   | Smooth      |
| 1-104-14-3-0 | 14            | 1 7/8        | 15/64         | 28                   | Smooth      |

**Features**

- For polishing and deburring work in lathes. Releases chips easily and produces 3 surfaces.



**HAND FILE**

**Engineering File**

| Product Code                       | Length (Inch) | Width (Inch) | Height (Inch) | Teeth Per Inch (TPI) | Type of Cut |
|------------------------------------|---------------|--------------|---------------|----------------------|-------------|
| <b>With Bi-Molded ERGO® Handle</b> |               |              |               |                      |             |
| 1-106-08-1-2                       | 8             | 25/32        | 3/16          | 25                   | Bastard     |
| 1-106-10-1-2                       | 10            | 31/32        | 13/64         | 23                   | Bastard     |

**Without handle**

|              |    |         |       |    |         |
|--------------|----|---------|-------|----|---------|
| 1-106-08-1-0 | 8  | 25/32   | 3/16  | 25 | Bastard |
| 1-106-10-1-0 | 10 | 31/32   | 13/64 | 23 | Bastard |
| 1-106-12-1-0 | 12 | 1 11/64 | 15/64 | 20 | Bastard |

**Features**

- Useful for all flat filing. Oberg cut gives a high removal rate and smooth surface finish on most materials.