

SecuraSpan™
POST HLL SYSTEMS

PORTABLE, VERSATILE, AND SAFE HORIZONTAL PROTECTION.

MULTIPLE
MOUNTING
OPTIONS FOR
CONCRETE
AND STEEL.



THE ULTIMATE IN FALL PROTECTION

PRODUCT SHEET



CONFIGURE IT YOUR WAY FOR JOB SITE FLEXIBILITY

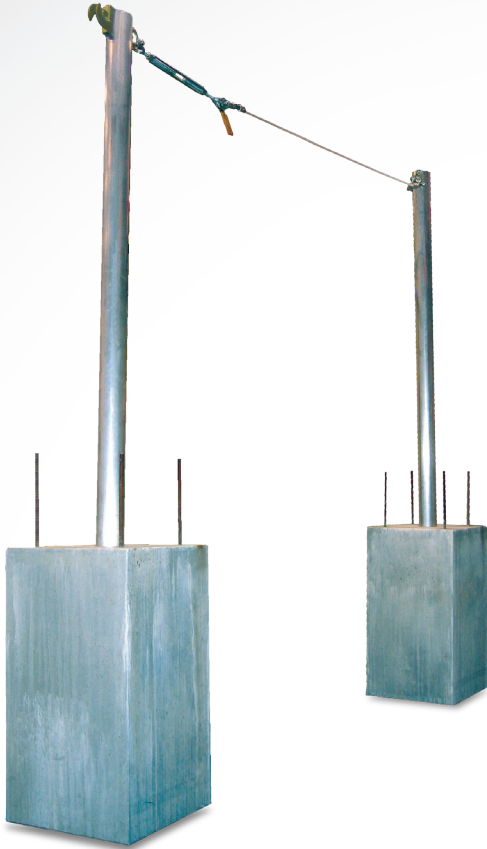
SecuraSpan™ is a fully engineered horizontal lifeline system designed to provide an overhead tie-off point, complete hands-free mobility and unrivaled ease-of-use. Whether your need is for a system that installs to concrete column tops, clamps to an i-beam on a pipe-rack or is welded to a transmission substation, this system can be configured with different bases to provide your fall protection solution.

SYSTEM FEATURES:

- Lightweight and portable
- High strength, no tie-back required
- Single and multi-span options
- Base options for concrete and steel
- Pass-thru design provides 100% continuous protection
- Capacity of up to six workers
- Extremely durable and corrosion resistant
- Meets applicable OSHA, ANSI and CSA standards

SecuraSpan™ POUR-IN-PLACE HORIZONTAL LIFELINE SYSTEM

The Pour-in-Place SecuraSpan™ system installs to column tops, providing an overhead tie-off point during the decking process. The post slides into the embedded pour-in-place sleeve and does not require “tie-back” for fast installation. Connect a shock absorbing lanyard or self retracting lifeline to the horizontal system for complete protection and hands-free mobility.



COMPLETE SYSTEMS

Single-span systems includes 2 posts (7400203), and cable lifeline assembly with tensioner and Zorbit™ energy absorber.

20' (6.1 m)	30' (9.1 m)	40' (12.2 m)	50' (15.2 m)	60' (18.3 m)
7400220	7400230	7400240	7400250	7400260

BUILD YOUR OWN SYSTEM

7400203	SecuraSpan™ Post, 7'-6" (2.3 m) tall
7400200	Intermediate bracket, Pour-In-Place post
7400201	Concrete sleeve for Pour-In-Place post
7403060	60' (18.3 m) Cable Lifeline Assembly with Tensioner and Zorbit™ Energy Absorber

Note: Other lifeline lengths available –or use with EZ-Line™ retractable horizontal lifeline.

CLEARANCE CHART

SPAN LENGTH	1-2 USERS SRL
20-30' (6.1-9.1 m)	9'-1" (2.8 m)
50-60' (15.4-18.3 m)	12'-5" (3.8 m)

Note: See product instruction manual for complete clearance information.

SecuraSpan™ FASTEN-IN-PLACE HORIZONTAL LIFELINE SYSTEM

The Fasten-in-Place SecuraSpan™ system has options for installation to steel or concrete surfaces, in vertical or horizontal configurations. The post slides into the base and does not require “tie-back” for fast installation. Connect a shock absorbing lanyard or self retracting lifeline to the horizontal system for complete protection and hands-free mobility.

CLAMP-ON VERTICAL BASES

These clamp-on bases provide an anchorage point for the SecuraSpan™ post on vertical structures including steel and concrete. Two models are available including fastening hardware to fit a range of beam sizes. Zinc plated steel construction for strength, durability and longevity.



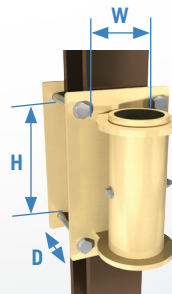
7400211 and
8530373
Clamp-On Vertical Bases

Note: Add your own 3/4" (19 mm) grade 8 hardware for added range (depth).

BUILD YOUR OWN SYSTEM

7400211	Clamp-On Vertical Base - Fits up to 6.72" W x 12.22" H x 6.50" through 7.50" D (171 mm x 316 mm x 165 mm through 191 mm) Structures
8530373	Clamp-On Vertical Base - Fits up to 8.13" W x 12.22" H x 11.94" through 12.94" D (207 mm x 310 mm x 303 mm through 329 mm) Structures
7400203	SecuraSpan™ Post, 7'-6" (2.3 m) tall
7400200	Intermediate Bracket (option for multi-span system)
7403060	60' (18.3 m) Cable Lifeline Assembly with Tensioner and Zorbit™ Energy Absorber

Note: Other lifeline lengths available –or use with EZ-Line™ retractable horizontal lifeline.



RELIABILITY.
TRUST.
CONFIDENCE.



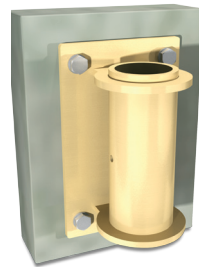
SecuraSpan™ FASTEN-IN-PLACE HORIZONTAL LIFELINE SYSTEM - continued

BOLT-ON VERTICAL BASE

This bolt-on base provides an anchorage point for the SecuraSpan™ post on vertical structures including steel and concrete. Attach with four fasteners (not provided) capable of withstanding system load requirements (minimum 3/4" {19 mm} grade 8 hardware recommended). Zinc plated steel construction for strength, durability and longevity.



7400218
Bolt-On Vertical Base



WELD-ON VERTICAL BASE

This weld-on base provides a permanent anchorage point for the SecuraSpan™ post on vertical steel structures. Simply weld the entire length of both c-channel edges to your structure. Steel c-channel construction for strength and ease of welding.



7400222
Weld-On Vertical Base

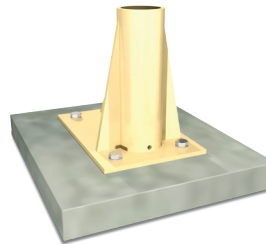


BOLT-ON HORIZONTAL BASE

This bolt-on base provides an anchorage point for the SecuraSpan™ post on horizontal structures including steel and concrete. Attach with four fasteners (not provided) capable of withstanding system load requirements (minimum 3/4" {19 mm} grade 8 hardware recommended). Zinc plated steel construction for strength, durability and longevity.



8530267
Bolt-On Horizontal Base



BUILD YOUR OWN SYSTEM

- 7400218 – Bolt-On Vertical Base (fasteners not provided)
- 7400203 – SecuraSpan™ Post, 7'-6" (2.3 m) tall
- 7400200 – Intermediate Bracket (option for multi-span system)
- 7403060 – 60' (18.3 m) Cable Lifeline Assembly with Tensioner and Zorbit™ Energy Absorber

Note: Other lifeline lengths available—or use with EZ-Line™ retractable horizontal lifeline.

BUILD YOUR OWN SYSTEM

- 7400222 – Weld-On Vertical Base
- 7400203 – SecuraSpan™ Post, 7'-6" (2.3 m) tall
- 7400200 – Intermediate Bracket (option for multi-span system)
- 7403060 – 60' (18.3 m) Cable Lifeline Assembly with Tensioner and Zorbit™ Energy Absorber

Note: Other lifeline lengths available—or use with EZ-Line™ retractable horizontal lifeline.

BUILD YOUR OWN SYSTEM

- 8530267 – Bolt-On Horizontal Base
- 7400203 – SecuraSpan™ Post, 7'-6" (2.3 m) tall
- 7400200 – Intermediate Bracket (option for multi-span system)
- 7403060 – 60' (18.3 m) Cable Lifeline Assembly with Tensioner and Zorbit™ Energy Absorber

Note: Other lifeline lengths available—or use with EZ-Line™ retractable horizontal lifeline.

Capital Safety - USA: 800 328 6146
 Canada: 800 387 7484 | Latin America: +1 651 385 4301
 Asia: +65 65587758 | Germany: +49 (0)30 92 03 83 87 00
 New Zealand: 0800 212 505 | Australia: 1800 245 002
 Europe, Middle East, Africa: +33 (0)4 97 10 00 10
 Northern Europe: +44 (0)1527 548000
www.capitalsafety.com info@capitalsafety.com

