

Flexible Containment

Rigid-Lock QuickBerm® Plus **NEW**

Heavy-duty construction provides long-term spill containment for vehicles, heavy equipment, tankers, and more

- Single-piece construction – patented Rigid-Lock wall-support system integral to berm provides unobstructed work space.
- Quick and easy setup – no assembly required.
- Durable EnGuard™ VI modified PVC coated fabric withstands long-term UV exposure – great for outdoor use.

The QuickBerm Plus® offers superior protection and chemical resistance against the harshest of liquids, including petroleum, oils, greases, and most acids. Exhibits three times greater resistance against punctures and abrasion, resulting in longer wear over other popular QuickBerm® products – excellent for heavy vehicle traffic.

Unlike floating-wall type berms that are susceptible to wall collapse and containment failure, the patented Rigid-Lock stainless steel brace supports walls at full 90° locked position for secure, leakproof containment. A simple push on the walls unlocks the support and lays the wall down for drive-through capability from any angle.

The built-in Rigid-Lock wall supports maximize usable space inside the berm and greatly reduce any tripping hazard on the berm perimeter. Reinforced CriticalCorner™ design with wraparound diagonal radio frequency (RF) welds offer exceptionally strong structural integrity to prevent seam leaks, provide fluid-tight reliability, and extend berm life expectancy. Finished hem edge on top of sidewall prevents fraying and adds strength. Each support includes an integrated hole for anchoring the berm under high wind conditions. Anchor stakes not included.

See page 28 for tarps, ground mats, track mats, or track runners to provide extra protection against rocky surfaces or heavy in-out traffic use.

Helps comply with EPA for containment and spill prevention (SPCC).



28504

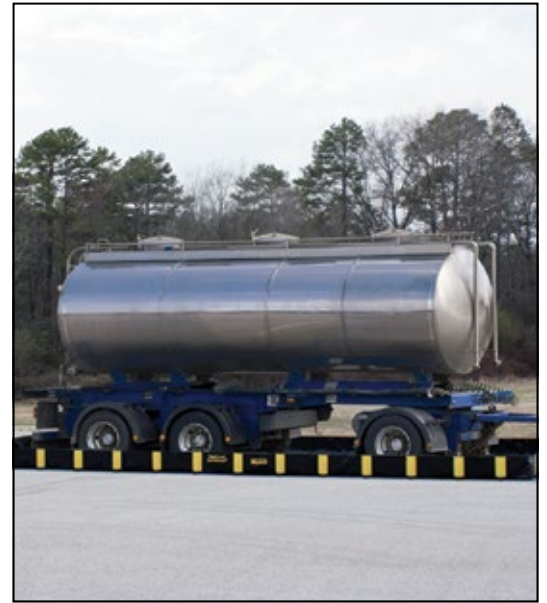


Capacity Gallons/Liters	Dimensions W x L x H		Model No	Ship Wt lb/kg
	Interior	Folded		
595/2252	8 ft x 10 ft x 12 in 2.4 m x 3.0 m x 305 mm	24 in x 24 in x 12 in 610 mm x 610 mm x 305 mm	28500	49/22
1120/4240	10 ft x 15 ft x 12 in 3.0 m x 4.6 m x 305 mm	24 in x 24 in x 16 in 610 mm x 610 mm x 406 mm	28502	75/34
2510/9501	12 ft x 28 ft x 12 in 3.7 m x 8.5 m x 305 mm	32 in x 32 in x 16 in 813 mm x 813 mm x 406 mm	28504	139/63
4485/16978	12 ft x 50 ft x 12 in 3.7 m x 15.2 m x 305 mm	36 in x 36 in x 20 in 914 mm x 914 mm x 508 mm	28506	269/122
4840/18321	12 ft x 54 ft x 12 in 3.7 m x 16.5 m x 305 mm	36 in x 36 in x 24 in 914 mm x 914 mm x 610 mm	28508	285/129
5860/22183	14 ft x 56 ft x 12 in 4.3 m x 17.1 m x 305 mm	40 in x 40 in x 24 in 1016 mm x 1016 mm x 610 mm	28510	321/146

Note (1): For exterior dimension, add 8-in (203-mm) to width and length to account for support and hub.

Note (2): When selecting a berm size, allow 12-in (305-mm) at entry or exit for lowering and raising the wall.

Ask about custom berm sizes



Rigid-Lock design provides large-scale spill protection with optimum floor space for unobstructed drive-through capability.

Unmatched structural integrity

Patented Rigid-Lock Mechanism

Critical-Corner™ Construction



Sets up to a 90° locked position. Integrated holes in hub permit easy anchoring.



Reinforced, wraparound design prevents seam leaks for fluid-tight reliability.



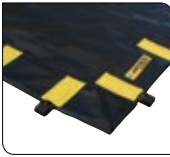
Supports fold down and lie flat to allow large vehicles to drive in from any angle. Highly chemical-resistant fabric offers exceptional abrasion and puncture resistance.

Flexible Containment



Portable, drive-in containment berms can be used anywhere, indoors or out, for storage of drums, tanks, or leaky equipment.

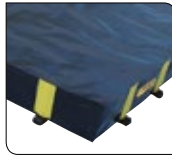
No assembly needed – saves time, ready in minutes!



Unfold berm, exposing supports in flat position.



A simple tug locks supports in upright position.



Fully deployed for quick spill readiness!

Unmatched structural integrity

Patented Rigid-Lock Mechanism



Sets up to a 90° locked position. Integrated holes in hub permit easy anchoring.



Stainless steel support is encased in protective hub to withstand vehicle traffic.

Critical-Corner™ Construction



Reinforced, wraparound design prevents seam leaks for fluid-tight reliability.

Rigid-Lock QuickBerm® **NEW**

Safe, drive-in spill containment for drums, IBC totes, and tanks

- *Single-piece construction – patented Rigid-Lock wall-support system integral to berm provides unobstructed work space.*
- *Quick and easy setup – no assembly required.*
- *Durable EnGuard™ V modified PVC coated fabric withstands long-term UV exposure—great for outdoor use.*

Ergonomic design provides 100% inside berm accessibility with an unobstructed side-to-side floor space for vehicle tires, foot traffic, and cleaning. The patented Rigid-Lock wall-support design protects personnel against trips and falls when walking along the outside perimeter. Built-in stainless steel wall supports lock the sidewalls in a 12-in (305-mm) high, 90° vertical position. The Rigid-Lock QuickBerm® offers immediate, secure deployment and no-worry, spill-readiness.

Like the QuickBerm® Plus the standard QuickBerm® withstands a broad range of chemicals including petroleum, oils, grease, and most acids—durable enough for extended wear. Exceptionally strong structural integrity includes a reinforced CriticalCorner™ design featuring wraparound diagonal radio frequency welds to prevent billowing, unwrapping, or sagging of the corners during full containment for fluid-tight reliability. Walls include a 1-in (25-mm) fray-resistant finished hem along the top rim for added wall strength and integrity. Each support includes an integrated hole for anchoring the berm under high wind conditions. Anchoring stakes not included. Sidewalls lower quickly for easy drive-in and out. Portable design folds down quickly for storage and transport.

Helps comply with EPA for containment and spill prevention (SPCC).

Note: the difference between the QuickBerm® Plus (page 19) and the standard Rigid-Lock QuickBerm® is the durability of the PVC-coated fabric. The Plus version with EnGuard™ VI material is thicker and more durable for more frequent drive-in or -out applications. The standard QuickBerm® constructed of EnGuard™ V material is better suited for infrequent drive-in or -out scenarios, pedestrian traffic, and for placing heavy materials within the working space.

See page 28 for tarps, ground mats, track mats, or track runners to provide extra protection against rocky surfaces or heavy in-out traffic use.



Capacity Gallons/Liters	Dimensions W x L x H		Model No	Ship Wt lb/kg
	Interior	Folded		
175/662	4 ft x 6 ft x 12 in 1.2 m x 1.8 m x 305 mm	24 in x 24 in x 5 in 610 mm x 610 mm x 127 mm	28512	24/11
235/890	4 ft x 8 ft x 12 in 1.2 m x 2.4 m x 305 mm	24 in x 24 in x 6 in 610 mm x 610 mm x 152 mm	28514	28/13
355/1344	6 ft x 8 ft x 12 in 1.8 m x 2.4 m x 305 mm	24 in x 24 in x 12 in 610 mm x 610 mm x 305 mm	28516	35/16
475/1798	8 ft x 8 ft x 12 in 2.4 m x 2.4 m x 305 mm	26 in x 26 in x 12 in 660 mm x 660 mm x 305 mm	28518	41/19
745/2820	10 ft x 10 ft x 12 in 3.0 m x 3.0 m x 305 mm	28 in x 28 in x 12 in 711 mm x 711 mm x 305 mm	28519	54/25
1075/4069	12 ft x 12 ft x 12 in 3.7 m x 3.7 m x 305 mm	28 in x 28 in x 12 in 711 mm x 711 mm x 305 mm	28522	69/31
1435/5432	12 ft x 16 ft x 12 in 3.7 m x 4.9 m x 305 mm	26 in x 26 in x 16 in 660 mm x 660 mm x 406 mm	28524	86/39
1795/6795	12 ft x 20 ft x 12 in 3.7 m x 6.1 m x 305 mm	30 in x 30 in x 12 in 762 mm x 762 mm x 406 mm	28526	102/46
1910/7230	16 ft x 16 ft x 12 in 4.9 m x 4.9 m x 305 mm	36 in x 36 in x 16 in 914 mm x 914 mm x 406 mm	28528	105/48
2390/9047	16 ft x 20 ft x 12 in 4.9 m x 6.1 m x 305 mm	36 in x 36 in x 20 in 914 mm x 914 mm x 508 mm	28530	124/56
2990/11318	20 ft x 20 ft x 12 in 6.1 m x 6.1 m x 305 mm	38 in x 38 in x 22 in 965 mm x 965 mm x 559 mm	28532	187/85

Note (1): For exterior dimension, add 8-in (203-mm) to width and length to account for support and hub.

Note (2): When selecting a berm size, allow 12-in (305-mm) at entry or exit for lowering and raising the wall.

Ask about custom berm sizes

Flexible Containment

Rigid-Lock QuickBerm® Lite **NEW**

Portable, versatile containment berm deploys quickly for emergency spill response

Leakproof, tough EnGuard™ I PVC coated fabric provides broad UV and chemical resistance that withstands repeated usage. The patented Rigid-Lock wall supports maximize usable space inside the berm and greatly reduce any tripping hazard around the perimeter. Stainless steel braces support wall at 90° locked position for secure, leakproof containment.

Lightweight berm folds down easily to a small size for storage in trucks, emergency vehicles, and spill kits. Add optional grates to help reduce contact with contaminated liquids by personnel or equipment.

Helps comply with EPA for containment and spill prevention (SPCC).

Applications:

- Saddle tank ruptures
- Personnel and small equipment decontamination
- Fuel tank overspill protection
- Hydraulic leaks and breaks
- Transformer storage
- Leaky containers, machinery, and piping
- Overfills from aircraft or locomotive refueling
- Truck, auto, and forklift battery storage
- Spill kit addition



28372



Quickly capture spills from damaged saddle tanks, minimizing ground contamination and associated clean-up costs.



Use as an emergency decontamination station with optional grating.



Capacity Gallons/Liters	Interior	Folded	Model No	Ship Wt lb/kg
79/299	4 ft x 4 ft x 8 in 1.2 m x 1.2 m x 203 mm	8 in x 11 in x 5 in 203 mm x 279 mm x 127 mm	28370	13/5
119/451	4 ft x 6 ft x 8 in 1.2 m x 1.8 m x 203 mm	8 in x 11 in x 6 in 203 mm x 279 mm x 152 mm	28372	16/6
159/602	4 ft x 8 ft x 8 in 1.2 m x 2.4 m x 203 mm	8 in x 13 in x 7 in 203 mm x 330 mm x 178 mm	28374	20/9
318/1204	8 ft x 8 ft x 8 in 2.4 m x 2.4 m x 203 mm	11 in x 14 in x 8 in 279 mm x 356 mm x 203 mm	28376	29/13
398/1507	8 ft x 10 ft x 8 in 2.4 m x 3.0 m x 203 mm	12 in x 16 in x 10 in 305 mm x 406 mm x 254 mm	28378	33/15

Note (1): For exterior dimension, add 8-in (203-mm) to width and length to account for support and hub.
 Note (2): When selecting a berm size, allow 8-in (203-mm) at entry or exit for lowering and raising the wall.



QuickBerm® Lite . . .

An economical way to equip truck fleets with emergency spill control from punctured fuel tanks—folds compactly and sets up quickly. Visit our website and search QuickBerm® Lite.

Flexible Containment



Quick-deployment Decon QuickBerm® used by first responders for emergency decontamination of personnel.



Individual, leakproof zones prevent contaminated fluid from traveling from one zone to another.

Decon QuickBerm® **NEW**

Portable multi-zone decon stations help prevent environmental contamination

- *Single-piece construction—patented inside wall-support system forms watertight wash down zones.*
- *Quick and easy setup—no assembly required.*

For emergency deployment, these multi-stage berms with patented interior walls create wash down zones that safely capture and contain contaminated solutions. Select from two-, three-, or four-zone models. Watertight, lightweight PVC coated fabric provides wide range of chemical resistance. The 8-inch (203-mm) walls allow for easy entry and exit of the compartments. One ¾-in GHT drain fitting per zone. Order optional grates to keep personnel above liquid.



28572

Capacity Gallons/Liters	Zones	Dimensions W x L x H		Model No	Ship Wt lb/kg
		Interior	Folded		
299/1132	2	6 ft x 10 ft x 8 in 1.8 m x 3.0 m x 203 mm	24 in x 24 in x 4 in 610 mm x 610 mm x 102 mm	28570	20/9
478/1810	3	6 ft x 16 ft x 8 in 1.8 m x 4.9 m x 203 mm	26 in x 26 in x 5 in 660 mm x 660 mm x 127 mm	28572	34/15
598/2264	4	6 ft x 20 ft x 8 in 1.8 m x 6.1 m x 203 mm	28 in x 28 in x 4 in 711 mm x 711 mm x 102 mm	28574	46/21

Grates **NEW**

Keep parts and equipment away from fluids and contaminants

Durable, anti-slip grates help keep drums and other objects above spills. Made of chemical resistant, easy-to-clean polyethylene.



28428

Description	Dimensions W x L x H	Model No	Ship Wt lb/kg
Polyethylene Grating	2 ft x 2 ft x 2 in 0.6 m x 0.6 m x 51 mm	28428	12/5
Polyethylene Grating	2 ft x 4 ft x 2 in 0.6 m x 1.2 m x 51 mm	28430	25/11



**Chemical compatibility—
make an informed decision . . .**

Knowing chemicals that are compatible with a product will help ensure its performance and longevity. For the compatibility charts associated with the Flexible Spill Containment products, visit justritemfg.com.

Flexible Containment

Maintenance Spill Berms **NEW**

Compact and flexible spill containment deploys instantly in the shop or field

- No assembly required—simply unfold and use.
- Encased urethane foam sidewalls offer easy roll-through access without the need for a ramp.
- Walls quickly spring back into place with no memory loss.

Quickly contain minor spills and leaks during temporary storage of drums, machine parts, batteries, and equipment. Lightweight PVC coated fabric provides broad UV and chemical resistance. Anchor berm in place using the brass grommets in each corner. Anchor stakes not included. Order optional grates to keep products and machinery above fluid. See page 22 for grates.

Helps comply with EPA for spill prevention (SPCC).



Portable, flexible spill berm provides leak and spill protection anywhere in your facility.

Capacity Gallons/Liters	Dimensions		Sidewall Height	Model No	Ship Wt lb/kg
	Interior W x L	Folded W x L x H			
5/19	2 ft x 2 ft 0.6 m x 0.6 m	30 in x 30 in x 2 in 762 mm x 762 mm x 51 mm	2 in 51 mm	28414	8/4
10/38		30 in x 30 in x 4 in 762 mm x 762 mm x 102 mm	4 in 102 mm	28400	10/5
10/38	2 ft x 4 ft 0.6 m x 1.2 m	30 in x 54 in x 2 in 762 mm x 1372 mm x 51 mm	2 in 51 mm	28416	10/5
20/76		16 in x 30 in x 16 in 406 mm x 762 mm x 406 mm	4 in 102 mm	28402	12/5
40/151	2 ft x 8 ft 0.6 m x 2.4 m	28 in x 28 in x 16 in 711 mm x 711 mm x 406 mm	4 in 102 mm	28404	18/8
20/76		30 in x 30 in x 6 in 762 mm x 762 mm x 152 mm	2 in 51 mm	28418	14/6
40/151	4 ft x 4 ft 1.2 m x 1.2 m	20 in x 24 in x 16 in 508 mm x 610 mm x 406 mm	4 in 102 mm	28406	19/9
60/227		24 in x 24 in x 16 in 610 mm x 610 mm x 406 mm	4 in 102 mm	28408	26/12
40/151	4 ft x 8 ft 1.2 m x 2.4 m	30 in x 30 in x 12 in 762 mm x 762 mm x 305 mm	2 in 51 mm	28421	28/13
80/303		36 in x 36 in x 16 in 914 mm x 914 mm x 406 mm	4 in 102 mm	28410	32/15
44/167	6 ft x 6 ft 1.8 m x 1.8 m	24 in x 24 in x 16 in 610 mm x 610 mm x 406 mm	2 in 51 mm	28422	31/14
90/341		38 in x 38 in x 16 in 965 mm x 965 mm x 406 mm	4 in 102 mm	28412	84/38
135/511	10 ft x 11 ft 3.0 m x 3.4 m	28 in x 28 in x 16 in 711 mm x 711 mm x 406 mm	2 in 51 mm	28424	50/23
220/833		30 in x 30 in x 16 in 762 mm x 762 mm x 406 mm		28426	65/30

Note: For exterior dimension on 4-in (102-mm) models, add 12-in (305-mm) to width and length.
For exterior dimension on 2-in (51-mm) models, add 6-in (152-mm) to width and length.



Roll-over sidewalls offer easy drum placement—foam walls quickly spring back for secure containment.



Folds up for easy storage.



28416 and 28430



28400 and 28428



Available in 2-in (51-mm) and 4-in (102mm) heights.

Flexible Containment



Position drip pad in tight spaces between machinery to capture oily leaks.

Drip Pads **NEW**

Capture small oil leaks and drips before they contaminate the ground or create unsafe work surfaces

- Lightweight, flexible, and portable – great for containing small oil drips from leaky vehicles, industrial machinery equipment, hydraulic lines, pipes, and drums.
- Made from UV- and chemical-resistant modified PVC.
- Patented design feature includes a coated mesh outer layer to trap coarse debris.

These drip pads feature replaceable, oil-only sorbent within a welded leakproof barrier. Rated for drive over applications, pads include brass grommets in opposing corners for anchoring. Anchoring stakes not included. Pads come in two sizes; extended model is weighted to keep it down in high winds. Outer shell is reusable with optional refill sorbent packs.

Helps comply with EPA for spill prevention (SPCC).



Description	Capacity Gallons/Liters	Dimensions		Model No	Ship Wt lb/kg
		Product W x L	Folded W x L x H		
Drip Pad with 5-Pack Sorbents	1.25/5	21 in x 23 in 533 mm x 584 mm	—	28458	4/2
Extended Drip Pad with 5-Pack Sorbents	1.75/7	24 in x 36 in 610 mm x 914 mm	24 in x 12 in x 6 in 610 mm x 305 mm x 152 mm	28459	8/4
Drip Pad 5-Pack Refill	1.25/5	15 in x 19 in 381 mm x 483 mm	—	28460	2/1
Extended Drip Pad 5-Pack Refill	1.75/7	30 in x 52 in 762 mm x 1321 mm	—	28461	4/2



Washdown QuickBerm® **NEW**

Portable drive-through station captures contaminated water from vehicle and construction equipment wash down

Durable vinyl coated material reinforced with radio frequency-welded, high visibility yellow runway strips that withstand drive-thru traffic, including backhoes and skid steers. Removable 4-in (102-mm) diameter foam inserts support sidewalls while 2-in H x 8-in W (51- x 203-mm) planks (not included) slide into pockets to keep end walls elevated preventing wastewater from escaping during drive-over. Simply remove foam inserts to fold material for quick and compact storage. Two 1-in NPT fittings on each side of the berm for drainage. Brass grommets around perimeter provide the ability to securely anchor berm during use. Anchor stakes not included.

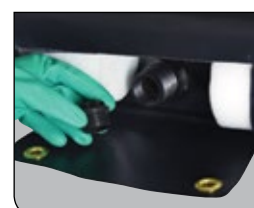
Helps comply with EPA for stormwater regulations.

Capacity Gallons/Liters	Dimensions W x L x H		Model No	Ship Wt lb/kg
	Interior	Folded		
250/947	10 ft x 11 ft x 4 in 3.0 m x 3.4 m x 102 mm	40 in x 40 in x 20 in 1016 mm x 1016 mm x 508 mm	28576	155/70
425/1609	10 ft x 18 ft x 4 in 3.0 m x 5.5 m x 102 mm	40 in x 40 in x 24 in 1016 mm x 1016 mm x 610 mm	28578	164/74
750/2840	12 ft x 26 ft x 4 in 3.7 m x 7.9 m x 102 mm	40 in x 40 in x 36 in 1016 mm x 1016 mm x 914 mm	28579	240/109
1800/6815	14 ft x 54 ft x 4 in 4.3 m x 16.5 m x 102 mm	40 in x 40 in x 48 in 1016 mm x 1016 mm x 1219 mm	28581	325/147

Note: For exterior dimension, add 8-in (203-mm) to width and 36-in (914-mm) length.



Wash down dirty equipment and recapture water for reclamation.



Drain fitting offers an easy way to redirect liquids.



Drive over endwalls without losing liquids.

Flexible Containment

Ceiling Leak Diverters **NEW**

Redirect roof or pipe leaks to prevent water damage

- Available with high strength magnets for steel rafter attachment, or grommets for bungee or zip tie attachment.
- Constructed with cinched corners for quick and easy installation.

Durable, puncture resistant, and watertight PVC-coated yellow fabric is designed to channel overhead pipe and ceiling leaks to containers or floor drains. Diverters help provide a fast and economical way to protect your personnel, equipment, and inventory. Simply connect to a standard garden hose to drain water safely away. Flow rate of 3.3 gal/min (12.5 L/min).



Suspended funneling design diverts damaging water from ceiling leaks to protect personnel, inventory, and equipment.

Product W x L	Dimensions		Model No Grommets	Model No Magnets	Ship Wt lb/kg
	Folded W x L x H				
5 ft x 5 ft 1.5 m x 1.5 m	18 in x 12 in x 2 in 457 mm x 305 mm x 51 mm		28300	28302	7/3
7 ft x 7 ft 2.1 m x 2.1 m	18 in x 16 in x 4 in 457 mm x 406 mm x 102 mm		28304	28306	10/5
10 ft x 10 ft 3.0 m x 3.0 m	18 in x 16 in x 6 in 457 mm x 406 mm x 152 mm		28308	28310	15/7
12 ft x 12 ft 3.7 m x 3.7 m			28312	28314	23/10
15 ft x 15 ft 4.6 m x 4.6 m	18 in x 16 in x 10 in 457 mm x 406 mm x 254 mm		28315	—	35/16
20 ft x 20 ft 6.1 m x 6.1 m	18 in x 16 in x 14 in 457 mm x 406 mm x 356 mm		28318	—	65/30

Mini-Berm Flex Tray **NEW**

Compact, portable spill control for harsh and hazardous chemicals

Safe and reliable for tabletop parts cleaning and fluid transfer operations involving petroleum products and acids, the Mini-Berm Flex Tray is made from a robust modified PVC-coated fabric. It features rigid corner supports and sturdy foam walls. Each berm comes with a 1-in NPT drain fitting. Simply attach hose and transfer fluids for disposal. Easy to fold and store; utility strap included.

Helps comply with EPA for containment and spill prevention (SPCC).



Capacity Gallons/Liters	Dimensions W x L x H		Model No	Ship Wt lb/kg
	Interior	Folded		
30/114	3 ft x 3 ft x 6 in 0.9 m x 0.9 m x 152 mm	5 in x 50 in x 7 in 127 mm x 1270 mm x 178 mm	28442	5/2
55/208	4 ft x 4 ft x 6 in 1.2 m x 1.2 m x 152 mm	5 in x 62 in x 7 in 127 mm x 1575 mm x 178 mm	28444	7/3
70/265	4 ft x 5 ft x 6 in 1.2 m x 1.5 m x 152 mm	8 in x 60 in x 8 in 203 mm x 1524 mm x 203 mm	28446	12/5
110/416	5 ft x 6 ft x 6 in 1.5 m x 1.8 m x 152 mm	8 in x 62 in x 8 in 203 mm x 1575 mm x 203 mm	28448	18/8



28442

Flexible Containment



Space-saving design for emergency spill control from ruptured saddle tanks.

Pop-Up Pools **NEW**

Economical emergency spill containment - simply unfold, shake from foam ring top, and place under leaking equipment

- Folds tightly and stows easily.
- Embedded foam ring top raises containment wall as fluid level increases.

Use these space-saving and lightweight pools to contain spills from punctured saddle tanks, or leaking drums, hydraulic lines, pipes, and machinery. The durable vinyl fabric is 20% heavier than other models on the market, providing increased abrasion resistance and more reliable seam adhesions. Yellow color provides visibility and easy identification.

Helps comply with EPA for containment and spill prevention (SPCC).



Use for temporary spill containment for leaky drums.



Folds to a compact size for storage in tight spaces.



28319



28321

SUPPORTS
SPCC

Capacity Gallons/Liters	Product Diameter x H	Dimensions		Model No	Ship Wt lb/kg
		Folded W x L x H			
20/76	28 in x 11 in 711 mm x 279 mm	18 in x 12 in x 3 in 457 mm x 305 mm x 76 mm		28319	2/1
66/250	51 in x 11 in 1295 mm x 279 mm	18 in x 16 in x 6 in 457 mm x 406 mm x 152 mm		28321	6/3
100/379	54 in x 11 in 1372 mm x 279 mm	24 in x 24 in x 3 in 610 mm x 610 mm x 76 mm		28323	11/5
150/568	65 in x 11 in 1651 mm x 279 mm	24 in x 24 in x 5 in 610 mm x 610 mm x 127 mm		28325	14/6



Free survey helps you address environmental concerns . . .

Not sure which spill control solution is right for you? Justrite's free STUD-E™ survey can ensure proper protection and compliance—visit justritemfg.com to learn more and sign-up.

Flexible Containment

Water-Filled Boom Diverters **NEW**

Temporarily divert and control fluid for easy cleanup or recovery

Use the water filled booms in storm water management, portable washdown/pressure washing diversion, spill diversion, and equipment and personnel decontamination. Flexible PVC film construction conforms to uneven surfaces such as asphalt or concrete to form a diversionary barrier away from storm drains or as a holding area for wet vacuum operations. Features easy-open push plug for filling with standard water hose.

Helps comply with EPA for stormwater regulations.



Product W x L	Dimensions		Model No	Ship Wt lb/kg
	Folded W x L x H			
9 in x 5 ft 229 mm x 1.5 m	6 in x 12 in x 3 in 152 mm x 305 mm x 76 mm		28450	2/1
9 in x 10 ft 229 mm x 3.0 m	6 in x 14 in x 4 in 152 mm x 356 mm x 102 mm		28452	3/1
9 in x 25 ft 229 mm x 7.6 m	10 in x 18 in x 6 in 254 mm x 457 mm x 152mm		28454	6/3
9 in x 50 ft 229 mm x 15.2 m	10 in x 18 in x 6 in 254 mm x 457 mm x 152mm		28456	12/5



Redirect liquids away from work areas and storm drains.

Water-Filled Drain Covers **NEW**

Ensure regulatory compliance and prevent run-off pollutants from entering stormwater drains

Deploy cover as a preventative measure to seal drains before washdowns, maintenance, or other cleanup tasks that may allow contaminants into nearby water systems. Features easy-open push plug for filling with standard water hose. Order a cover size that overlaps drain opening at least 6-in (152-mm) on each edge. To prevent edges from losing contact with ground surface, do not fill over 5-in (127-mm) in height. Long-lasting durable modified vinyl construction resists damage caused by UV rays.

Helps comply with EPA for stormwater regulations.

Product W x L	Dimensions		Model No	Ship Wt lb/kg
	Folded W x L x H			
30 in x 30 in 762 mm x 762 mm	15 in x 15 in x 3 in 381 mm x 381 mm x 76 mm		28468	5/2
42 in x 42 in 1067 mm x 1067 mm	16 in x 18 in x 4 in 406 mm x 457 mm x 102 mm		28470	10/5
42 in x 66 in 1067 mm x 1676 mm	16 in x 18 in x 6 in 406 mm x 457 mm x 152 mm		28472	13/6
58 in x 58 in 1473 mm x 1473 mm	29 in x 29 in x 5 in 737 mm x 737 mm x 127 mm		28474	16/7



28468

Waterproof Tarps **NEW**

Protect drums and equipment to avoid contamination or damage

- Brass grommets in corners offer a convenient way to secure the tarp in place.

Shield equipment from the harsh effects of direct sunlight, sand, dust, and rain with these protective covers. Waterproof, lightweight vinyl coated fabric reduces the effect of the environment. Use under berm products to provide additional puncture and wear-resistance.

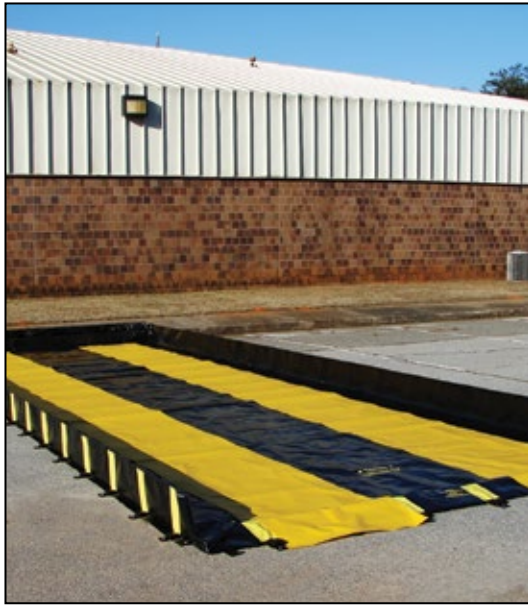
Product W x L	Dimensions		Model No	Ship Wt lb/kg
	Folded W x L x H			
5 ft x 5 ft 1.5 m x 1.5 m	18 in x 16 in x 6 in 457 mm x 406 mm x 152 mm		28432	6/3
5 ft x 10 ft 1.5 m x 3.0 m			28434	8/4
10 ft x 10 ft 3.0 m x 3.0 m			28436	15/7
10 ft x 12 ft 3.0 m x 3.7 m			28438	20/9
10 ft x 20 ft 3.0 m x 6.1 m		18 in x 16 in x 14 in 457 mm x 406 mm x 356 mm		28439



Keep drums clean from dirt and debris.

28432

Flexible Containment



Improve wear resistance and extend the life of your berm by adding track runners.

Ground Protection Accessories **NEW**

Improve berm longevity without sacrificing functionality

Ground Mats – Create a smooth, uniform deployment area with this heavy-duty woven fabric. Place under berm for improved wear resistance against rocks and construction debris.

Track Mats – Position inside the berm for extra protection along tire paths. Thick durable, black woven fabric protects the floor and walls from tire abrasion caused by skidding, turning, and braking.

Track Runners – Place this high visibility, yellow vinyl coated fabric inside the berm for moderate protection against tire abrasion.



28356 Ground Mat



28348 Track Mat



28340 Track Runner

Description	6-ft (1.8-m) Length		10-ft (3.0-m) Length		16-ft (4.9-m) Length		28-ft (8.5-m) Length		56-ft (17.1-m) Length	
	Model No	Ship Wt lb/kg	Model No	Ship Wt lb/kg	Model No	Ship Wt lb/kg	Model No	Ship Wt lb/kg	Model No	Ship Wt lb/kg
6-ft (1.8-m) Wide Ground Mat	28338	16/7	28344	76/35	28350	89/40	28356	113/51	28362	173/79
3-ft (0.9-m) Wide Track Mat	28336	10/5	28342	14/6	28348	72/33	28354	85/39	28360	114/52
3-ft (0.9-m) Wide Track Runner	28334	6/3	28340	8/4	28346	16/7	28352	16/7	28358	28/13

Note: Ground protection accessories are typically used to protect against tires and should be ordered in quantities of two.

Berm Repair Kits **NEW**

Repair lightly damaged berms

Use to repair berms having small holes, abrasion points, and small tears to maintain fluid-tight reliability and compliance.

- Heat Gun and Nozzle (some models)
- Pressure Application Roller
- Sand Paper
- Scissors and Utility Knife
- PVC Cement
- 10-square feet of coated fabric repair material

Note: Heat gun may not be compatible with local electrical connections.



Description	Use to repair these products	Model No with heat gun	Model No without heat gun	Ship Wt lb/kg
		Modified Vinyl Repair Kit	Rigid-Lock QuickBerm® Plus, Rigid-Lock QuickBerm®, and the Mini-Berm Flex Tray	
PVC Coated Fabric Repair Kit	Rigid-Lock QuickBerm® Lite, Decon QuickBerm®, Maintenance Spill Berm, and Pop-Up Pool	28330	28329	

Structured Containment

EcoPolyBlend™ Accumulation Centers and Ramp

Combine units to create your own customized spill-control system

Low-profile centers only measure 5.5-inches (140-mm) high for easy handling of drums. Made with 100% recycled polyethylene, these accumulation centers are nearly impervious to chemicals, including acids and corrosives. Seamless construction eliminates leaks, making them ideal for drum filling and dispensing operations. Self-locating grates won't ride-up, and are removable for easy cleaning. Combine 2-, 4-, 6-, and 8-drum modular units to create your own customized system. Use the optional joining clips to firmly lock units together. Sumps remain separate and clips can be removed for easy repositioning. Also available in non-recycled yellow color.

EPA compliant, supports SPCC, and meets NFPA 1 2009 edition and IFC fire codes.

Use optional Sump-to-Sump™ drain kit (includes joining clips and transfer tube) for applications requiring a continuous sump. Kit allows you to join centers together, on-site, for full compliance with regulations when sump capacities reach 71-gallons (270-liters). Kit includes one pair stainless steel joining clips, one pair rubber grommets, one polytetrafluoroethylene (PTFE) transfer tube. (Patent No US 6,622,879,B1)

Companion Ramp

Load and unload heavy drum with ease. Anti-skid ribs provide maximum safety. Place the ramp anywhere on accumulation centers size 2-drum or larger.



Modular design lets you join centers together to fit your space and application.

Build your own customized system!

123 in (3124 mm)

49 in (1245 mm)

58 in (1473 mm)

28655 2-Drum Unit 22-Gal (90-L)

28655 2-Drum Unit 22-Gal (90-L)

28655 2-Drum Unit 22-Gal (90-L)

Total 71-Gal (270-L) Sump Capacity meets US EPA and UFC codes

28687 Accumulation Center Ramp

Sump-to-Sump Kit

Joining Clip



Black models - 100% recycled content. Independently green validated by UL Environment.

Yellow models have 45% recycled content



Description	Sump Capacity Gallons/Liters	Load-bearing* Capacity lb/kg	External Dim. W x D x H	Compliance	Model No Black	Model No Yellow	Ship Wt lb/kg
1 drum center	12/45	1250/567	25 x 25 x 5.5 in 635 x 635 x 140 mm	—	28653	28652	17/8
2 drum center	24/90	2500/1134	49 x 25 x 5.5 in 1245 x 635 x 140 mm		28655	28654	32/15
4 drum center	49/185	5000/2268	49 x 49 x 5.5 in 1245 x 1245 x 140 mm		28657	28656	61/28
6 drum center	73/276	7500/3402	73 x 49 x 5.5 in 1854 x 1245 x 140 mm	E,S,O	28659	28658	91/41
8 drum center	98/371	10,000/4536	97 x 49 x 5.5 in 2464 x 1245 x 140 mm		28661	28660	122/55
Ramp for above		1000/455	48 x 33 x 6.25 in 1219 x 838 x 159 mm		28687	28650	41/19
Joining clips, one pair, stainless steel	—	—	4 x 2 in 102 x 51 mm	—	28926	—	1/0.5
Sump-to-Sump™ drain kit			—		28927		

EcoPolyBlend™ Replacement Grates (100% recycled)

2 drum grate for all sizes except 1 drum			24 x 48 x 2.5 in 610 x 1219 x 63 mm	—	28259	—	16/7
1 drum grate for 1 drum unit and 3 drum In-line			24 x 24 x 2.5 in 610 x 610 x 63 mm		28260		8/4

*Service temperature range: -30°F to 120°F (-34°C to 49°C)

Structured Containment



Use pallet as a workstation for waste collection.

EcoPolyBlend™ Spill Control Pallets

Keep workers safe from accidental slips indoors and avoid costly hazmat cleanup costs

- Protect against ground contamination.
- Comply with EPA and avoid potential fines.

Made of molded 100% recycled polyethylene, these pallets resist chemical attack from hazardous acids, caustics and solvents. The oversized sump holds the contents of up to a 55-gallon (200-liter) drum in the event of leak or rupture—meeting or exceeding the most stringent spill containment regulations. Seamless construction eliminates leaks. Self-locating grates lift off for quick cleanup. Black color hides grime and dirt to keep your workplace looking clean. Choose from square or in-line configurations. Also available in non-recycled yellow color.

EPA compliant, supports SPCC, and meets NFPA 1 2009 edition and IFC fire codes.



28634



28627



28623



Black models - 100% recycled content.
Independently green validated
by UL Environment.

Yellow models have 45% recycled content



28631



28635 with 28688 ramp



Description	Sump Capacity Gallons/Liters	Load-bearing* Capacity lb/kg	External Dim. W x D x H	Compliance	Model No Black	Model No Yellow	Ship Wt lb/kg
2 drum in-line pallet	66/250	2500/1134	49 x 25 x 18 in	E,S,O	28623	28622	44/20
2 drum in-line pallet w/drain			1245 x 635 x 457 mm		28625	28624	
3 drum in-line pallet	75/284	3750/1701	73 x 25 x 11.625 in		28627	28626	58/26
3 drum in-line pallet w/drain			1854 x 635 x 295 mm		28629	28628	
4 drum in-line pallet	75/284	5000/2268	97 x 25 x 9 in		28631	28630	77/35
4 drum in-line pallet w/drain			2464 x 635 x 229 mm		28633	28632	
4 drum square pallet	73/276	5000/2268	49 x 49 x 10.25 in		28635	28634	70/32
4 drum square pallet w/drain			1245 x 1245 x 260 mm		28637	28636	
Ramp for 28635	—	1000/454	49 x 33 x 10.50 in 1245 x 838 x 267 mm	—	28688	28620	40/18

EcoPolyBlend™ Replacement Grates (100% recycled)

2 drum grate for all sizes above	24 x 48 x 2.5 in 610 x 1219 x 63 mm	—	28259	—	16/7
1 drum grate for 3 drum In-line	24 x 24 x 2.5 in 610 x 610 x 63 mm		28260		8/4

*Service temperature range: -30°F to 120°F (-34°C to 49°C)

Structured Containment

EcoPolyBlend™ DrumSheds™

Safe, secure, and compliant outdoor storage for drums

Weather resistant DrumSheds™ are made of eco-friendly, 50% recycled polyethylene. Convenient roll top doors allow access from front or rear. A wide, 52-inch (1321-mm) door opening accepts palletized loads. Fully compliant, leakproof pallet sump has removable, durable deck grating for easy cleanup of spills. A spacious interior offers ample headroom for adding funnels or pumps. Safety features include grounding capability, integral anchor bolt locations for wind resistance, and molded lugs to accept padlocks for security. Forklift pockets at the front and back make it easy to relocate empty sheds. Ships fully assembled. Pallets (without shed) also available.

Low Line Pallets (without shed) also available. Two-drum and 4-drum sizes feature ergonomic, low 9-in (229-mm) working height.

EPA compliant, supports SPCC, and meets NFPA 1 2009 edition and IFC fire codes.



Easily roll drums into a DrumShed™ for storage.



Independently green validated by UL Environment.



28676 (closed)

28676

Description	Recycled Content	Sump Capacity Gallons/Liters	Load-bearing* Capacity lb/kg	External Dim. W x D x H	Compliance	Model No	Ship Wt lb/kg
2 drum DrumShed™	50%	67/254	2500/1134	60.75 x 58.50 x 75.25 in 1543 x 1486 x 1911 mm	E,S,0	28675	292/133
4 drum DrumShed™		79/301	5000/2268	60.75 x 68.50 x 75.25 in 1543 x 1740 x 1911 mm		28676	343/156
Ramp	100% - Black 0% - Yellow	—	1000/455	48 x 59.75 x 11.25 in 1219 x 1518 x 286 mm	—	28679 -Black 28678 -Yellow	65/30
Low Line Pallet - 2 drum	100%	67/254	2500/1134	55 x 45 x 9 in 1397 x 1143 x 229 mm	E,S,0	28672	68/31
Low Line Pallet - 4 drum		79/301	5000/2268	55 x 55 x 9 in 1397 x 1397 x 229 mm		28673	89/40

*Service temperature range: -30°F to 120°F (-34°C to 49°C)

Steel Spill Containment Pallets

Use rugged, high sump capacity pallets for industrial applications

Constructed of 11-gauge hot rolled steel and strengthened with formed edging, these rugged pallets feature generous sump capacities and are 100% leakproof. Galvanized steel bar grating removes for easy cleaning and keeps drums out of overflow. Large forklift pockets 8.375-in W x 3.875-in H (213-mm W x 98-mm H) make relocation easy. Available in corrosion resistant blue powder-coat or galvanized steel finishes.

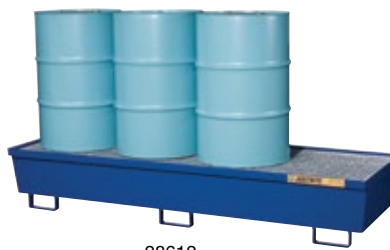
Description	Sump Capacity Gallons/Liters	Load-bearing Capacity lb/kg	External Dim. W x D x H	Compliance	Blue Model No	Galvanized Model No	Ship Wt lb/kg
2 drum pallet	72/273	1200/544	47.25 x 37.50 x 16.3125 in 1200 x 800 x 414 mm	E,S,0,I,A	28610	28611	165/75
4 drum in-line pallet	102/386	2400/1089	94.125 x 31.50 x 13.0625 in 2391 x 800 x 332 mm		28612	28613	305/138
4 drum square pallet	77/291	2400/1089	47.25 x 47.25 x 13.0625 in 1200 x 1200 x 332 mm		28614	28615	215/98



28611



28614



28612



Structured Containment



Outdoor design features lockable, dual-access roll-top doors and includes reach pole for easy closure.

EcoPolyBlend™ IBC Pallet and IBC Shed

Reliable spill protection and safe storage for IBCs

- Compliant storage for popular 275- or 330-gal (1000 or 1250-liter) IBCs.
- Compact footprint with ergonomic working height.

Constructed of durable 40% recycled polyethylene, these intermediate bulk container pallets offer excellent chemical resistance. Accepts IBCs up to 48-in W x 48-in D x 53-in H (1219-mm W x 1219-mm D x 1346-mm H). Large leakproof sump exceeds regulations and protects against high volume spills. Sturdy pillar supports accept up to 9,000-lb (4082-kg) uniformly distributed load. Removable pillars make for easy sump cleanup. Pallet features forklift pockets for relocation when empty. Ships fully assembled.

EPA compliant, supports SPCC, and meets NFPA 1 2009 edition and IFC fire codes.



Independently green validated
by UL Environment.



28674



28674



Description	Recycled Content	Sump Capacity Gallons/Liters	Load-bearing* Capacity lb/kg	External Dim. W x D x H	Compliance	Model No	Ship Wt lb/kg
IBC indoor pallet	40%	372/1408	9000/4082	55 x 55 x 37.50 in 1397 x 1397 x 952 mm	E,S,0	28674	357/162
IBC outdoor shed w/pallet				60.75 x 68.50 x 103.75 in 1543 x 1740 x 2635 mm		28677	621/282
Replacement Reach Pole				1.125 dia x 60 in L 28 dia x 1524 mm L	—	28690	3/2

*Service temperature range: -30°F to 120°F (-34°C to 49°C)

EcoPolyBlend™ Spill Trays

Lightweight and low-profile design for small-scale spill control

Made of 100% recycled polyethylene, these eco-friendly spill trays will not rust or corrode. Raised rib bottom adds rigidity and keeps contents out of spills—perfect for pouring and filling applications. Rated for service temperatures between -30° to 120°F (-34 to 49°C).

Sump Capacity Gallons/Liters	External Dim. W x D x H	Nominal Interior Dim W x D x H	Model No	Ship Wt lb/kg
12/45	46 x 16 x 5.50 in 1168 x 406 x 140 mm	40.375 x 10.375 x 4.875 in 1026 x 264 x 124 mm	28715	4/2
20/75	38 x 26 x 5.50 in 965 x 660 x 140 mm	32.375 x 20.375 x 4.875 in 822 x 518 x 124 mm	28716	5/2
	47.50 x 23 x 5.50 in 1207 x 584 x 140 mm	41.875 x 17.375 x 4.875 in 1064 x 441 x 124 mm	28717	6/3
23/87	37.75 x 34 x 5.50 in 959 x 864 x 140 mm	31.875 x 28.375 x 4.875 in 810 x 721 x 124 mm	28718	
29/109	47 x 33 x 5.50 in 1194 x 838 x 140 mm	41.375 x 27.375 x 4.875 in 1051 x 695 x 124 mm	28719	8/3



28718



28716



28719

Structured Containment

EcoPolyBlend™ Spill Containment Caddy

Get convenient handling, dispensing and built-in spill containment—all in one product!

- Rubber, 10-in (254-mm) wheels roll over bumpy terrain—use indoors or out.
- Single-piece, double-walled seamless design eliminates leaks.

This portable unit with wheels allows one person to easily transport a full 55-gallon (200-liter) drum. Ergonomic design with tilt/stop feature minimizes back strain. Two tension straps hold a drum securely in place. A 66-gallon (250-liter) spill sump contains chemical spills, eliminating hazards and hassles. Exclusive open-view sump design makes cleanup simple and quick. Durable 90% recycled polyethylene construction provides maximum corrosion resistance and leakproof protection. Also, available in non-recycled yellow color.

EPA compliant, supports SPCC, and meets NFPA 1 2009 edition and IFC fire codes.

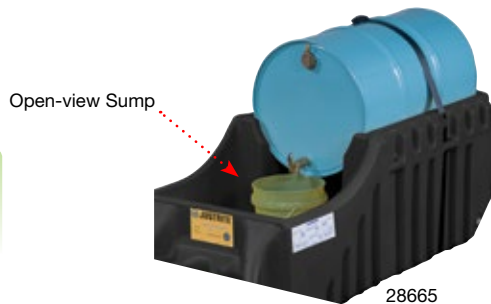


Two-wheeled design makes for easy transport.



Black models - 90% recycled content.
Independently green validated
by UL Environment.

Yellow models have no recycled content



28665



Description	Sump Capacity Gallon/Liters	Load-bearing* Capacity lb/kg	External Dim. W x D x H	Compliance	Model No Black	Model No Yellow	Ship Wt lb/kg
Indoor/outdoor caddy	66/250	1250/567	32 x 72 x 26 in 813 x 1829 x 660 mm	E,S,0	28665	28664	125/57

*Service temperature range: -30°F to 120°F (-34°C to 49°C)

EcoPolyBlend™ Spill Control Funnels

An eco-friendly, cost-effective way to collect liquids and keep drum tops clean

Use these funnels with any closed-head 30- and 55-gallon (110- and 200-liter) drums. Low-profile, wide diameter opening makes it for quick, easy pouring. Scalloped, sloped design minimizes splashes and prevents containers from resting in their own liquids. Large, flat well at the throat of funnel allows for passive draining of paint tins, filters, buckets and other containers.

Funnel for flammable liquids includes a drum fill vent with brass flame arrester, threaded bung cap with tight seal, and pressure relief valve for high temperatures. Molded-in hook stores optional funnel cover.



Wide diameter opening allows for quick and easy pouring.

Description	Sump Capacity Gallons/Liters	OD x H	Compliance	Model No	Ship Wt lb/kg
Funnel for nonflammables	2.50/9	21 x 3.25 in 533 x 83 mm	0	28680	5/2
Funnel for flammables		19 x 3.25 in 482 x 83 mm		28681	7/3
Cover for funnel 28680		—	28682	5/2	



100% recycled content.
Independently green validated
by UL Environment.

Structured Containment



EcoPolyBlend™ drum management system combines efficient drum storage and positive spill control.

EcoPolyBlend™ Drum Management System

Organize drums for maximum efficiency, productivity and cost-savings

Space-saving, stackable design stores up to four 30- and/or 55-gallon (110- and/or 200-liter) drums of Class 1B or 1C flammables and combustibles or nonhazardous liquids. 100% recycled molded polyethylene construction provides maximum chemical resistance—preventing corrosion, deterioration and leaks. Molded-in drum lock-channels hold drums in place. The system consists of three parts: a base module, stack module and dispensing shelf.

The Base Module holds two drums with a 3060-lb (1388-kg) total load capacity. Easily relocate the base module with a forklift when empty. The 66-gallon (250-liter) open-view containment sump makes it easy to spot any spills for a quick cleanup.

The Stack Module holds two additional drums to double the system capacity for a load of 1500-lb (680-kg). When storing both 30- and 55-gallon (110- and 200-liter) drums, the smaller drums should be placed on the top of the stack module.

The Dispensing Shelf has a load capacity of 60-lb (27-kg), and mounts securely to the stack module for convenient dispensing from the upper level.

EPA compliant, supports SPCC, and meets NFPA 1 2009 edition and IFC fire codes.



Black models - 100% recycled content.
Independently green validated
by UL Environment.

Yellow models have no recycled content



28667 Base



28667 Base • 28669 Stacker with strap • 28671 Shelf



Drum vents provide pressure relief . . .

Whether storing drums horizontally or vertically, Justrite has the solution for safely relieving dangerous drum pressure—visit justritemfg.com for details.



Description	Sump Capacity Gallons/Liters	Load-bearing* Capacity lb/kg	External Dim. W x D x H	Compliance	Model No Black	Model No Yellow	Ship Wt lb/kg
Base module	66/250	3060/1388	49 x 59 x 26 in 1245 x 1499 x 660 mm	E,S,0	28667	28666	138/63
Stack module	—	1500/680	49 x 46 x 12 in 1245 x 1168 x 305 mm	—	28669	28668	70/32
Dispensing shelf	—	60/27	19.50 x 18.75 x 16.50 in 495 x 476 x 419 mm	—	28671	—	12/5

*Service temperature range: -30°F to 120°F (-34°C to 49°C)

Structured Containment

Overpack/Salvage Drums

Approved for the transportation of hazardous materials

- Polyethylene drums are DOT/UN certified to the highest “X” rating for Packing Groups I, II, and III solids up to 750-lb (340-kg).

These dual-purpose drums are DOT/UN approved for use as a salvage drum for dry hazardous materials, or as secondary containment for solids or liquids with a 95-gallon (360-liter) sump capacity. Durable 100% polyethylene construction is chemical and weather resistant to withstand the rigors of land, air and sea transportation. Twist-on threaded lid makes closure safe and easy. Simply use a forklift to relocate the drums. Units nest when empty for compact storage. Select from yellow or black polyethylene.



28201



28203



Durable construction withstands the rigors of transportation.

Description	Recycled Content	Sump Capacity Gallons/Liters	Outside Dim. OD x H	UN Cert. No	Compliance	Model No	Ship Wt lb/kg
Overpack/salvage drum; yellow	None	95/360	31 x 43.25 in 787 x 1099 mm	1H2/X340/S	DOT/UN	28201	47/21
Overpack/salvage drum; black						28203	

EcoPolyBlend™ Single- and Double-Drum Collection Centers

All-weather construction stands up to the harshest environments

Chemical-resistant 100% recycled polyethylene offers effective and economical spill control for 55-gallon (200-liter) drums. Forklift channels allow for easy relocation (when empty). Lids include lock to prevent unauthorized access.

EPA compliant, supports SPCC, and meets NFPA 1 2009 edition and IFC fire codes.



28685 with funnel 28680 on 28270 steel dolly



28683, Dual covers open separately for convenient access to either drum.



Description	Sump Capacity Gallons/Liters	Outside Dim. W x D x H	Compliance	Model No	Ship Wt lb/kg
Double-drum collection center	180/681	60 x 39 x 47 in 1524 x 991 x 1194 mm	E,S,0	28683	108/49
Single-drum collection center	66/250	33 top dia x 31.75 in 838 top dia x 806 mm		28685	44/20
Steel drum dolly for single drum	—	fits 28685	—	28270	14/6

Recycling



Use Aerosolv® anywhere you find aerosol cleaners, adhesives, and lubricants.

Aerosolv® Aerosol Can Disposal System

Safely recycle aerosol cans while reducing disposal costs and minimizing waste

- Save thousands of dollars on hazardous waste disposal costs.
- Turn aerosol cans into recyclable steel—save on landfill space for a cleaner environment.

The Aerosolv® system safely converts spent aerosol cans from solid hazardous waste to a non-hazardous material. It accepts industry standard sized cans with a maximum height of 8½-in (215-mm) and threads directly into a standard 2-in (51-mm) bung on a 30- (110-liter) or 55-gallon (200-liter) drum. Body is made of low maintenance aluminum and all moving parts are 308 stainless steel. A non-sparking pin punctures the can, and the residual liquids flow into the collection drum. One 55-gallon (200-liter) drum holds approximately 4,200 spent aerosol cans. Punctured, discharged, cans do not meet the definition of hazardous waste per EPA 40 CFR 261.23(a)(6), and thus can be treated as recyclable scrap metal.

Attach the two-part combination filter to the 3/4-in (19-mm) bung to filter VOCs from any residual propellants. The bottom coalescing cartridge transforms residual liquids into droplets that collect in the reservoir of the cartridge and safely drain into the drum. The top activated carbon filter cartridge indicates saturation and serves as a replacement reminder. Economical, non color-changing filter is also available. System includes a combination filter, safety goggles, and an anti-static ground wire with alligator clip. EPA compliant.

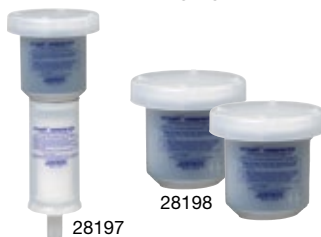
Color Changing Filter



28224

28223

Non-Color Changing Filter



28197

28198



Description	Shipping Dim. W x D x H	Compliance	Model No	Ship Wt lb/kg
Aerosolv®	18 x 18 x 7 in 457 x 457 x 178 mm	E	28202	12/5

Accessories	Model No
Counter Accessory for any Aerosolv® Unit	28225
Color Changing Combination Coalescing/Carbon Filter	28224
Color Changing Activated Carbon Cartridge (2pk)	28223
Combination Coalescing/Carbon Filter (non-color changing)	28197
Activated Carbon Cartridge (2pk) (non-color changing)	28198
Aerosolv® Maintenance Repair Kit (for use with any Aerosolv®) Includes: 1 non-sparking puncture pin with O-rings 1 Aeroprene (polychloroprene) gasket 1 Spring 3 bridge pins 1 tube of grease	28200
Replacement Aeroprene (polychloroprene) gasket	28111
Replacement poly sleeve	28181

†Coalescing filter can only be purchased in combination with a carbon filter.

Note: With the 28202 Aerosolv® unit you must leave the last aerosol can punctured and drained clamped in the unit to maintain a closed container as defined by OSHA.



28225

Retrofit your existing #28202 Aerosolv® with #28225 Counter for easy recordkeeping.



Collect empty aerosol cans in open-head drums . . .

Popular Cease-Fire® open-head drums are made of durable steel and come in sizes up to 55-gallon (200-liter)—a great way to collect cans for recycling! Visit justritemfg.com for details.

Aerosolv® Super System

Certified by the EPA's Environmental Technology Verification Program (ETV)

- Built-in counter tracks number of cans punctured.
- Protective coating for easy cleaning.

Aerosolv® Super System offers all the features of the original Aerosolv® system plus greater vapor reduction, easy tracking, and added security. Lockout and shut-off mechanism seals the system and drum when not in use to eliminate the escape of hazardous vapors to meet OSHA requirements. Easily comply with your ISO 14001 program using the built-in counter. Includes a combination coalescing/saturation indicating carbon filter, a padlock with key, anti-static ground wire with C-clamp, and safety goggles.

EPA compliant and ETV certified.



Description	Shipping Dim. W x D x H	Compliance	Model No	Ship Wt lb/kg
Aerosolv® Super System with Counter	18 x 18 x 7 in 457 x 457 x 178 mm	E,V	28230	12/5
Color Changing Combination Coalescing/Carbon Cartridge with auto shut-off valve	6 x 6 x 16 in 152 x 152 x 406 mm	—	28228	3/1
Replacement Color Changing Activated Carbon Cartridge (2 pack)			28229	5/2



Built-in counter is a great tool for easy adherence to your ISO 14001 program.

Aerosolv® Dual-Compliant System

Designed to comply with California's vapor emission regulation SB1158

Aerosolv® Dual-Compliant System includes all the great features of the Aerosolv® Super System plus a shut-off valve in the puncturing unit and a check valve in the carbon cartridge to prevent off-gassing. A poly lid cover and a poly containment sump help you stay compliant whether you are accumulating or transporting processed aerosol cans for scrap. Includes a combination coalescing/saturation indicating carbon filter, a padlock with key, antistatic ground wire with C-clamp, and safety goggles.

EPA compliant and ETV certified.



Description	Shipping Dim. W x D x H	Compliance	Model No	Ship Wt lb/kg
Aerosolv® Dual Compliant Can Disposal System with Counter	27 x 27 x 10 in 457 x 457 x 178 mm	E,V	28231	21/10

Note: See replacement filters above.



28231

Prosolv® System

Safely and economically convert gas cylinders into recyclable steel containers

The Prosoolv® System removes the sealing sleeve and internal valve stem from propane, MAPP, and 3/4-in (19-mm) male threaded calibration gas cylinders (do not use with oxygen bottles). It empties and filters propellants from cylinders converting them into non-hazardous recyclable material.

EPA compliant.



Description	Shipping Dim. W x D x H	Compliance	Model No	Ship Wt lb/kg
*Prosoolv® Includes: vent device, carbon filter, antistatic wire, safety goggles, sleeve removal tool, and 40 certification tags	15 x 11 x 7 in 381 x 279 x 178 mm	E	28190	8/4
Replacement filter with 40 tags	6 x 6 x 9 in 152 x 152 x 229 mm	—	28191	3/1
Replacement sleeve removal tool	5 x 6 x 4 in 127 x 152 x 102 mm	—	28192	1/0.5



28190

Sorbents



Easily wipe grimy, small parts with handy sorbent pads.

Universal Sorbents

Absorb spills of water- or petroleum-based fluids and keep your workplace clean and safe from slip accidents

For everyday cleanup of drips, leaks and spills around workbenches, pipes, and machinery. Polypropylene fibers absorb up to 25 times their weight. Use for liquids such as hydraulic oil, antifreeze, gasoline, acetone, or other water-based fluids. Use pre-cut pads for wiping operations or small spills. Convenient perforated rolls are suitable for larger areas including workstations and walkways.

Bonded sorbents with dimpled surface for increased tensile strength quickly soak up liquids.

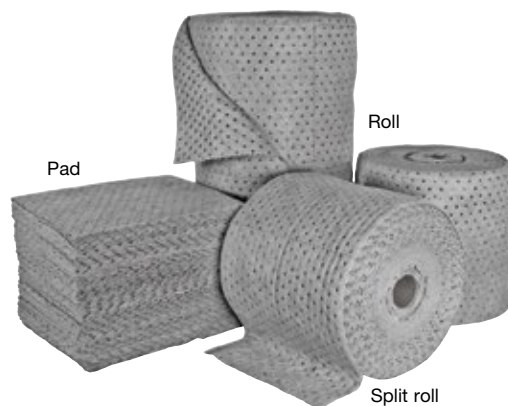
Fine Fiber low-lint sorbents provide gripping power for walkways and help control equipment leaks and oversprays. Suitable for wiping applications.

Laminated SMS sorbents provide virtually lint-free use with sensitive tools and in rugged wiping applications.

Drum Top Pad soaks up drips from collection or dispensing operations. Pre-cut bung holes fit 55-gallon (200-L) drums.



83056



Description	Weight Type	Nominal Dimensions W x D	Absorbency Capacity Gallons/Liters	No of Pieces and Pack	Ship Wt lb/kg	Model No
Bonded						
Bonded universal pads	Heavy	15 x 17 in (381 x 432 mm)	32/121	100 / bag	11/5	83002
	Light			200 / bag	13/6	83006
Bonded universal rolls	Heavy	30 in x 150 ft (762 mm x 46 m)	62/235	1 / bag	24/11	83008
Bonded universal split rolls	Medium	15 in x 150 ft (381 mm x 46 m)		2 / bag		19/9
Fine Fiber						
Fine fiber universal pads	Heavy	15 x 17 in (381 x 432 mm)	32/121	100 / bag	15/7	83016
	Light			200 / bag		83020
Fine fiber universal rolls	Heavy	30 in x 150 ft (762 mm x 46 m)	62/235	1 / bag	31/14	83022
Fine fiber universal split rolls	Medium	15 in x 150 ft (381 mm x 46 m)				51/193
	Heavy	15 in x 150 ft (381 mm x 46 m)	62/235	2 / bag	28/13	83026
Laminated SMS						
Laminated SMS universal pads	Heavy	15 x 17 in (381 x 432 mm)	32/121	100 / bag	11/5	83028
	Light			200 / bag		13/6
Laminated SMS universal rolls	Heavy	30 in x 150 ft (762 mm x 46 m)	62/235	1 / bag	24/11	83034
Laminated SMS universal split rolls		15 in x 150 ft (381 mm x 46 m)		2 / bag		83038
Drum Top Pad						
Universal drum top pad	Heavy	22 in dia (559 mm)	10/38	25 / bag	5/2	83056

Sorbents

Oil Only Sorbents

Fast, effective cleanup of oil spills on land or water

Hydrophobic polypropylene fibers absorb and retain petroleum-based liquids without absorbing water, making them ideal for liquids like motor oil, transmission fluids, transformer oil, and drilling and cutting fluids. Sorbents float indefinitely and remain intact when fully saturated. White color helps identify saturation. Available in handy pre-cut pads or perforated rolls.

Meltblown sorbents offer the most economical liquid control.

Bonded sorbents feature ultrasonically bonded points, fusing fibers together for increased tensile strength.

Fine Fiber sorbents offer high absorption strength and gripping power, with two layers of polypropylene bonded around a high-loft meltblown core.

Laminated SMS resists abrasions and are low-lint to prevent contamination to sensitive parts.



Use sorbent rolls to clean up workstation floors and reduce potential accidents.



Description	Weight Type	Nominal Dimensions W x D	Absorbency Capacity Gallons/Liters	No of Pieces and Pack	Ship Wt lb/kg	Model No
Meltblown						
Meltblown oil only pads	Heavy	15 x 17 in (381 x 432 mm)	32/121	100 / bag	11/5	83202
	Light		16/61		7/3	83206
Meltblown oil only rolls	Heavy	30 in x 150 ft (762 mm x 46 m)	62/235	1 / bag	24/11	83210
	Medium		51/193		19/9	83212
Meltblown oil only split rolls	Heavy	15 in x 150 ft (381 mm x 46 m)	62/235	2 / bag	24/11	83214
	Medium		51/193		19/9	83216
Bonded						
Bonded oil only pads	Heavy	15 x 17 in (381 x 432 mm)	32/121	100 / bag	11/5	83218
	Light		16/61		8/4	83222
Bonded oil only rolls	Heavy	30 in x 150 ft (762 mm x 46 m)	62/235	1 / bag	24/11	83226
	Medium		51/193		19/9	83228
Bonded oil only split rolls	Heavy	15 in x 150 ft (381 mm x 46 m)	62/235	2 / bag	24/11	83230
	Medium		51/193		19/9	83232
Fine Fiber						
Fine fiber oil only pads	Heavy	15 x 17 in (381 x 432 mm)	32/121	100 / bag	15/7	83234
	Light		16/61		9/4	83238
Fine fiber oil only rolls	Heavy	30 in x 150 ft (762 mm x 46 m)	62/235	1 / bag	31/14	83242
	Medium		51/193		21/10	83244
Fine fiber oil only split rolls	Heavy	15 in x 150 ft (381 mm x 46 m)	62/235	2 / bag	31/14	83246
	Medium		51/193		21/10	83248
Laminated SMS						
Laminated SMS oil only pads	Heavy	15 x 17 in (381 x 432 mm)	32/121	100 / bag	11/5	83250
	Light		16/61		7/3	83254
Laminated SMS oil only rolls	Heavy	30 in x 150 ft (762 mm x 46 m)	62/235	1 / bag	24/11	83258
	Medium		51/193		19/9	83260
Laminated SMS oil only split rolls	Heavy	15 in x 150 ft (381 mm x 46 m)	62/235	2 / bag	24/11	83262
	Medium		51/193		21/10	83274

Sorbents



Sorbent socks mold easily around the ledge of machinery, absorbing leaking oils and overspray.

Specialty Sorbents

Various styles and contents for indoor and outdoor applications

Universal Socks & Pillows contain a blend of polypropylene and cellulose recycled fibers to help fulfill environmental initiatives. Because they contain a blend of material, do not use with acids, bases or unknown liquids. Use socks around large spills to prevent spreading, or mold around machine bases. Pillows offer high volume spill cleanup in tight spaces.

Oil Only Socks, Pillows, and Booms are made of 100% polypropylene. They absorb oil but repel water; ideal for use on waterborne spills. Wrap socks around leaky outdoor equipment. Pillows soak up oil in ponds, basins, and tanks. Non-toxic, non-shedding floating booms include rope and snap links for linking together for quick deployment in waterways.

Hazmat Pads, Rolls, Socks, and Pillows soak up acids and bases. Made of surfactant-treated polypropylene, they are ideal for unknown liquids; they won't react with aggressive chemicals and solvents. High visibility colors quickly identify hazardous conditions.



Description	Nominal Dimensions W x D	Absorbency Capacity Gallons/Liters	No of Pieces and Pack	Ship Wt lb/kg	Model No
Universal					
Universal socks	3 in x 4 ft (76 mm x 1 m)	66/250	40 / box	28/13	83048
	3 in x 10 ft (76 mm x 3 m)	60/227	15 / box	25/11	83050
Universal pillows	11 x 13 in (279 x 330 mm)	23/87	16 / box	8/4	83052
	10 x 10 in (254 x 254 mm)	35/132	40 / box	6/3	83054
Oil Only					
Oil only socks	3 in x 4 ft (76 mm x 1 m)	22/83	12 / box	8/4	83268
	3 in x 10 ft (76 mm x 3 m)	20/76	4 / box	7/3	83270
Oil only pillows	10 x 10 in (254 x 254 mm)	42/160	24 / box	6/3	83272
Oil only booms	5 in x 10 ft (127 mm x 3 m)	33/125	4 / bag	14/6	83264
	8 in x 10 ft (203 mm x 3 m)	71/269		34/15	83266
Hazmat					
Hazmat pads - heavy weight	15 x 17 in (381 x 432 mm)	32/121	100 / bag	11/5	83402
Hazmat pads - light weight			200 / bag	13/6	83404
Hazmat rolls - heavy weight	30 in x 150 ft (762 mm x 46 m)	62/235	1 / bag	24/11	83406
Hazmat split rolls - heavy weight	15 in x 150 ft (381 mm x 46 m)		2 / bag		83408
Hazmat socks	3 in x 4 ft (76 mm x 1 m)	22/83	12 / box	6/3	83410
	3 in x 10 ft (76 mm x 3 m)	20/76	4 / box	8/4	83412
Hazmat pillows	18 x 24 in (457 x 610 mm)	40/151	10 / box	10/5	83414
	16 x 18 in (406 x 457 mm)	44/167	17 / box	17/8	83416

Sorbents

Spill Kits

UN certified containers filled with universal, oil only or hazmat sorbents provide quick response to any size spill

20-gallon (76-L) Spill Kits open with a twist of the lid for quick spill cleanup. Portable size allows for multiple placements at different workstations.

Contents:

- 25 – 15-in x 17-in (381- x 432-mm) pads
- 4 – 3-in x 4-ft (76-mm x 1-m) socks
- 2 – 10-in x 10-in (254- x 254-mm) pillows
- 1 pair of safety goggles, 1 pair of disposable gloves, 1 shovel,
- 1 Emergency Response book, 1 disposal bag.

50-gallon (189-L) Wheeled Spill Kits Kits provide portability for average sized spills. Chemical, weather resistant polyethylene construction with large 40-in (152-mm) wheels make them easy to move anywhere, indoors or out.

Contents:

- 50 – 12-in x 13-in (305- x 330-mm) wipes
- 50 – 15-in x 17-in (381- x 432-mm) pads
- 5 – 3-in x 4-ft (76-mm x 1-m) socks
- 5 – 3-in x 10-ft (76-mm x 3-m) socks
- 4 – 10-in x 10-in (254- x 254-mm) pillows
- 1 Emergency Response book, 5 drum liners.

95-gallon (360-L) Spill Kits contain enough supplies to respond to larger scale accidents. Durable, 100% polyethylene resists rust and corrosion, keeping contents dry and ready for use. High visibility color saves valuable response time for site cleanup.

Contents:

- 100 – 15-in x 17-in (381- x 432-mm) pads
- 10 – 10-in x 10-in (254- x 254-mm) pillows
- 4 – 5-in x 10-ft (127-mm x 3-m) booms
- 2 pairs of safety goggles, 2 pairs of disposable gloves,
- 1 shovel, 10 disposal bags.



Kits strategically positioned throughout a facility provide fast, emergency response to dangerous spills.



83676

83632

83632

Description	Sorbent Type	Nominal Dimensions Top Diameter x H	UN Certification No	Absorbency Gallons/Liters	No of Pieces and Pack	Ship Wt lb/kg	Model No
Spill kit 20 gallon (76 L)	Universal	22.25 x 19 in 565 x 483 mm	1H2/X75/S 1H2/Y100/S	19/72	1 kit	28/13	83632
	Oil only						83634
	Hazmat						83636
Spill kit 50 gallon (189 L)	Universal	23 x 45 in 584 x 1143 mm	1H2/X125/S	41/155	1 kit	45/20	83672
	Oil only						83674
	Hazmat						83676
Spill kit 95 gallon (360 L)	Universal	31 x 41.5 in 787 x 1054 mm	1H2/X295/S	86/326	1 kit	105/48	83652
	Oil only						83654
	Hazmat						83656