



# SERVICE PARTS LIST

BULLETIN NO.  
54-06-7000

SPECIFY CATALOG NO. AND SERIAL NO. WHEN ORDERING PARTS		REVISED BULLETIN	DATE
CORDLESS WORKLIGHT			April 2008
CATALOG NO. 49-24-0185	STARTING SERIAL NO.	WIRING INSTRUCTION	
	A61A	<b>SEE REVERSE SIDE</b>	

EXAMPLE:  
Component Parts (Small #) Are Included  
When Ordering The Assembly (Large #).

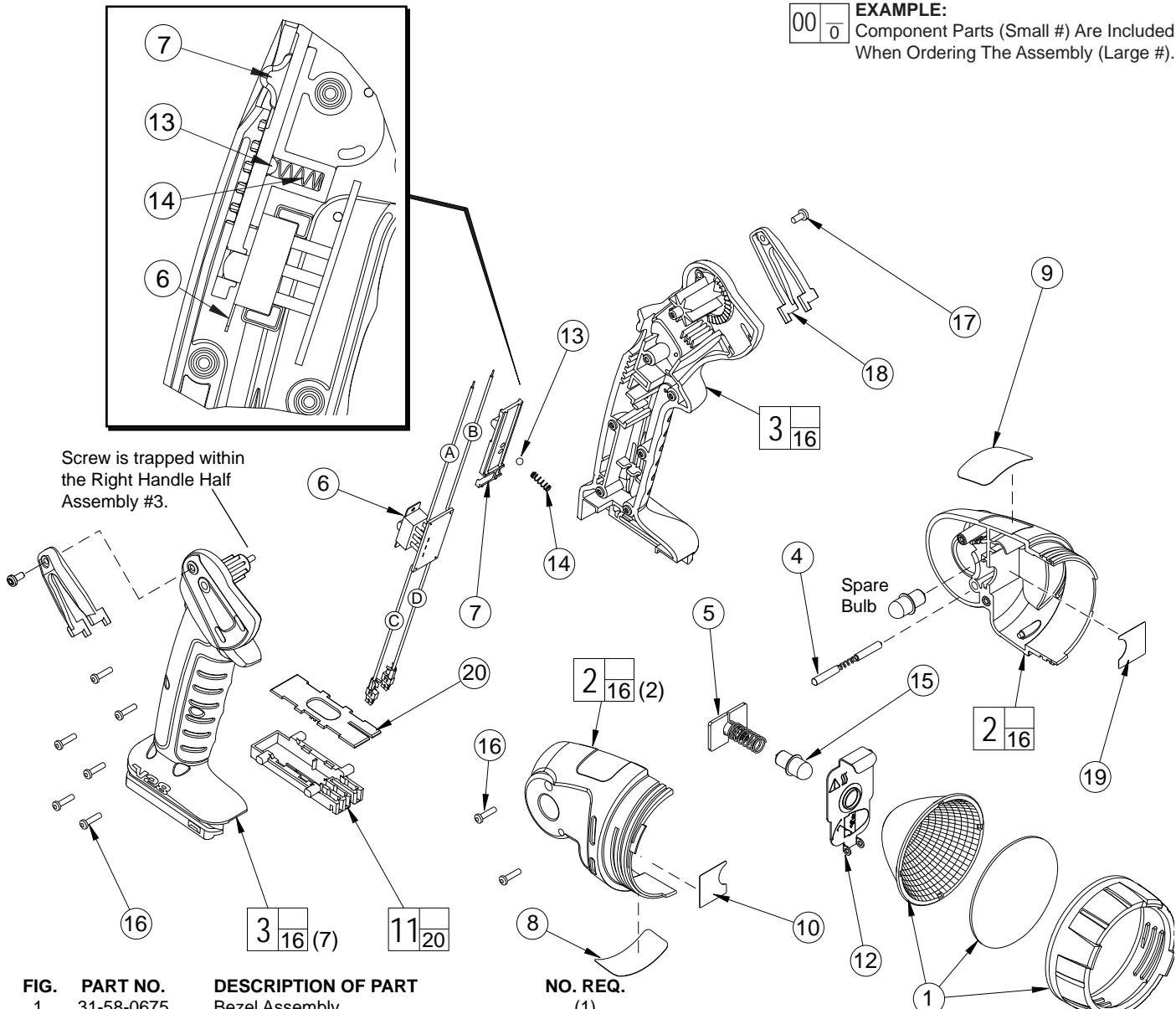
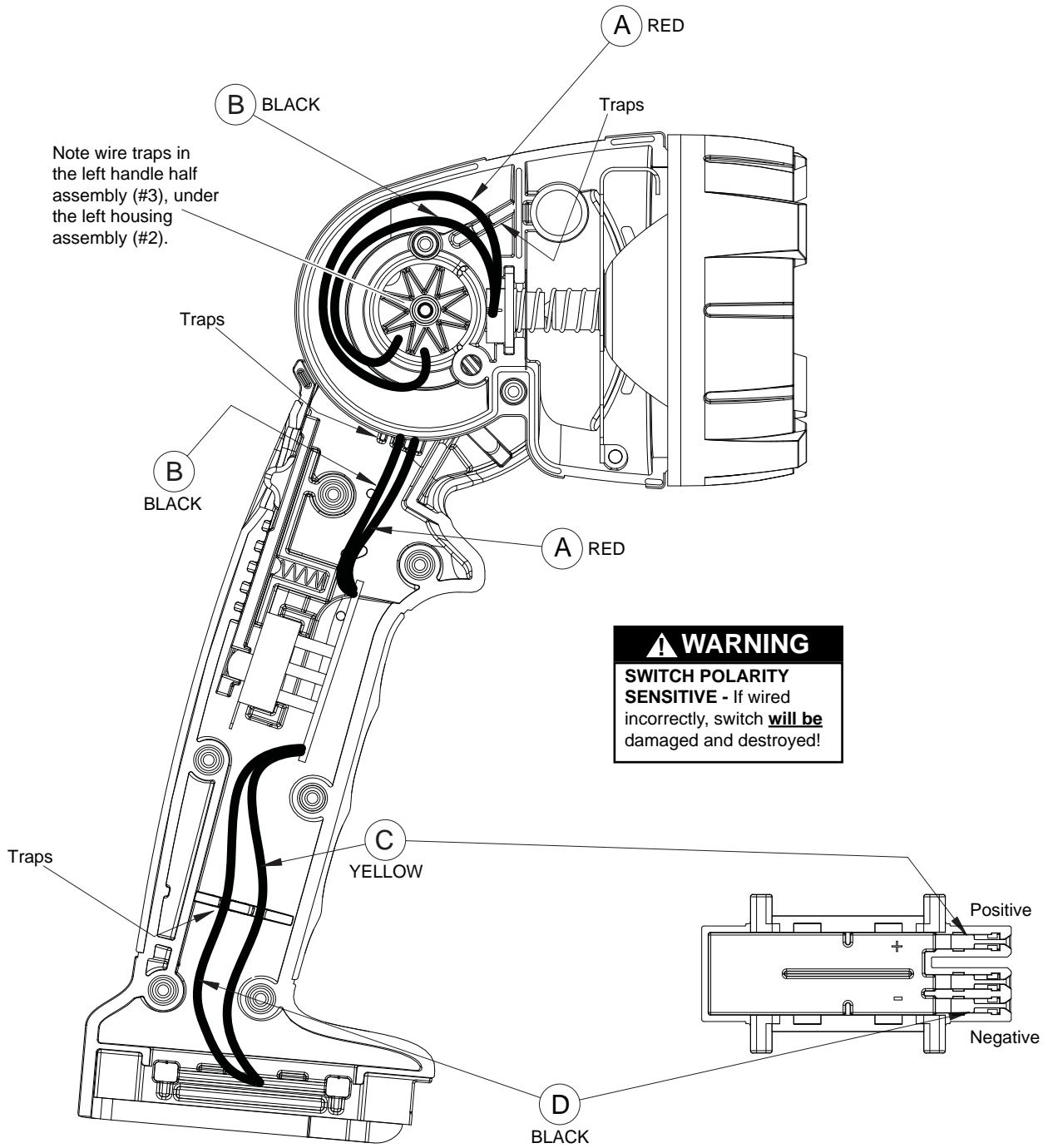


FIG.	PART NO.	DESCRIPTION OF PART	NO. REQ.
1	31-58-0675	Bezel Assembly	(1)
2	31-50-3290	Housing Assembly	(1)
3	31-44-0187	Handle Half Assembly	(1)
4	44-60-0885	Detent Assembly	(1)
5	22-58-0305	Contact Assembly	(1)
6	22-09-0285	Switch Assembly	(1)
7	45-24-0835	Slide Switch	(1)
8	12-20-1185	Service Nameplate	(1)
9	-----	Product Label	(1)
10	10-15-0485	Warning Label - Bulb	(1)
11	22-56-1185	Connector Block Assembly	(1)
12	23-02-0176	Heat Sink Assembly	(1)
13	02-02-1100	4mm Ball	(1)
14	40-50-0930	Compression Spring	(1)
15	49-81-0040	28 Volt Lightbulb (Pkg. of 2)	(1)
16	06-82-7225	#4-20 x .50 Plastite T-20 Screw	(8)
17	06-82-5275	6-32 x 5/16" Pan Hd. T-15 Screw	(2)
18	43-72-0300	Belt Clip Holder	(2)
19	-----	Warning Label	(1)
20	-----	Connector Block Cover	(1)

**⚠ WARNING**  
**SWITCH POLARITY SENSITIVE**  
If wired incorrectly, switch **will be**  
damaged and destroyed!  
**See reverse side of bulletin for**  
**switch wiring detail.**

**NOTE:** The use of a soft cloth is recommended when installing lightbulbs. Direct contact with oils or other contamination can shorten the life of lightbulbs.

**FIG. NOTES:**  
11,20 Concave side of connector block cover to face connector block.



WIRING SPECIFICATIONS				
Wire	Wire Color	Origin or Gauge	Length	Terminals, Connectors and 1 or 2 End Wire Preparation
A	Red	-----	-----	Component of the Switch Assembly. 22-09-0285.
B	Black	-----	-----	Component of the Switch Assembly. 22-09-0285.
C	Yellow	-----	-----	Component of the Switch Assembly. 22-09-0285.
D	Black	-----	-----	Component of the Switch Assembly. 22-09-0285.

**BULK LEAD WIRE - BULLETIN NO. 58-01-0003**

TERMINAL DESCRIPTION		
Code	Part No.	Qty.